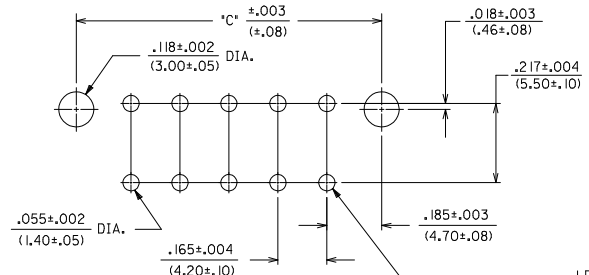
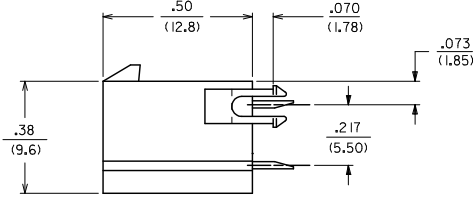
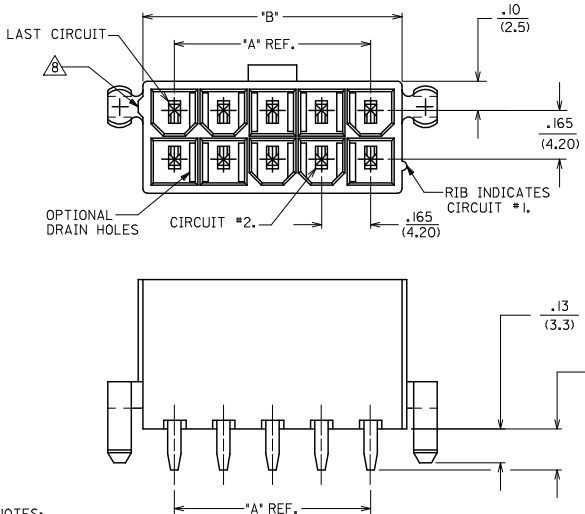


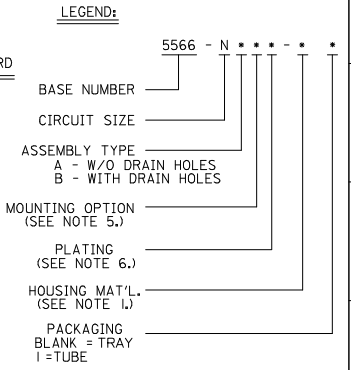
13 12 11 10 9 8 7 6 5 4 3 2 1



CIRCUIT SIZE	DIM. 'A'	DIM. 'B'	DIM. 'C'
2	—	.21 (5.4)	.370 (9.40)
4	.17 (4.2)	.38 (9.6)	.535 (13.6)
6	.33 (8.4)	.54 (13.8)	.701 (17.8)
8	.50 (12.6)	.71 (18.0)	.866 (22.0)
10	.66 (16.8)	.87 (22.2)	1.031 (26.2)
12	.83 (21.0)	1.04 (26.4)	1.197 (30.4)
14	.99 (25.2)	1.20 (30.6)	1.362 (34.6)
16	1.16 (29.4)	1.37 (34.8)	1.528 (38.8)
18	1.32 (33.6)	1.54 (39.0)	1.693 (43.0)
20	1.49 (37.8)	1.70 (43.2)	1.858 (47.2)
22	1.65 (42.0)	1.87 (47.4)	2.024 (51.4)
24	1.82 (46.2)	2.03 (51.6)	2.189 (55.6)

- NOTES:**
- HOUSING MATERIAL:
    - \*BLANK\* - NYLON 6/6, U.L. 94V-2, COLOR: NATURAL.
    - 210 - NYLON 6/6, U.L. 94V-0, COLOR: NATURAL.
    - BL - NYLON 6/6, U.L. 94V-2, COLOR: DYED BLACK.
  - TERMINAL MATERIAL: BRASS ALLOY 260
  - PART MATES WITH MINI-FIT JR. RECEPTACLE #5557.
  - PACKAGING: SEE CHARTS
  - MOUNTING OPTIONS:
    - \*BLANK\* - NO MOUNTING (SEE SD-5566-NA AND -NB SERIES DWGS.)
    - 2 - PEG MOUNT
  - TERMINAL PLATING:
    - \*BLANK\* - .00035/(.00090) MIN. TIN OVER .00020/(.00050) MIN. COPPER.
    - \*GS - .00030/(.00076) MIN. SELECT GOLD .000100/(.00254) MIN. SELECT MATTE TIN OVER .000050/(.00127) MIN. NICKEL OVERALL.
    - \*GS2 - .00015/(.00038) MIN. SELECT GOLD AND .000100/(.00254) MIN. SELECT MATTE TIN OVER .000050/(.00127) MIN. NICKEL OVERALL.
    - S - .000100/(.00254) MIN. TIN OVER .000050/(.00127) MIN. NICKEL.
  - \*THE PRIMARY SHIPPING CARTON WILL BE LABELED \*COMPLIANT TO RoHS DIRECTIVE 2002/95/EC AND ELV ANNEX II OF DIRECTIVE 2000/53/EC.\* \*CARTONS WITHOUT THIS LABEL MAY CONTAIN PRODUCT WITH TIN-LEAD PLATING.
  - PRODUCT SPECIFICATION AND PROCESSING PARAMETERS: SEE PS-5556-001
  - ANTI-SHINGLING RIB MAY OR MAY NOT APPEAR ON HOUSINGS.
  - CONNECTORS ARE NOT TO BE MATED OR UNMATED WHILE CIRCUITS ARE LIVE.
  - PARTS ARE NOT DESIGNED FOR CURRENT SHARING.

RECOMMENDED HOLE LAYOUT FOR .070/(1.78) MAX. THICK P. C. BOARD  
VIEWED FROM COMPONENT SIDE



4	R2
3	R2
2	R2
1	R2
SHT.	REV.

<b>REVISED NOTES 8</b> EC NO. UCP2008-1536 DRAWN: KLOSTERMEIER 2008/11/24 CHKD: BELL 2008/11/24 APPR: SMITH 2008/11/24	QUALITY SYMBOLS ▽=0 ▽=0	GENERAL TOLERANCES (UNLESS SPECIFIED): <table border="1"> <tr><th></th><th>mm</th><th>INCH</th></tr> <tr><td>4 PLACES</td><td>±.005</td><td>±.0005</td></tr> <tr><td>3 PLACES</td><td>±.005</td><td>±.001</td></tr> <tr><td>2 PLACES</td><td>±0.38</td><td>±.015</td></tr> <tr><td>1 PLACE</td><td>±0.38</td><td>±.015</td></tr> </table>			mm	INCH	4 PLACES	±.005	±.0005	3 PLACES	±.005	±.001	2 PLACES	±0.38	±.015	1 PLACE	±0.38	±.015	DIMENSION STYLE IN/MM	SCALE 1:1	DESIGN UNITS METRIC	THIRD ANGLE PROJECTION
			mm	INCH																		
		4 PLACES	±.005	±.0005																		
		3 PLACES	±.005	±.001																		
2 PLACES	±0.38	±.015																				
1 PLACE	±0.38	±.015																				
DRAWN BY: RJF CHECKED BY: GT APPROVED BY: RAS DATE: 8/19/87		TITLE <b>MINI-FIT JR. VERTICAL HEADER ASSEMBLIES WITH MOUNTING PEGS</b>		MATERIAL NO. <b>SEE SHTS 2-4</b>		SHEET NO. 1 OF 4																
DRAFT WHERE APPLICABLE MUST REMAIN WITHIN DIMENSIONS		ANGULAR ±1/2°		DOCUMENT NO. <b>SDA-5566-N*2*-*</b>		SHEET NO. 1 OF 4																
THIS DRAWING CONTAINS INFORMATION THAT IS PROPRIETARY TO MOLEX INCORPORATED AND SHOULD NOT BE USED WITHOUT WRITTEN PERMISSION																						

tb\_frame\_C.P.ME.T Rev. D. 2004/04/02 12 11 10 9 8 7 6 5 4 3 2 1

	13	12	11	10	9	8	7	6	5	4	3	2	1
J	PLATING:	35 M.I. TIN	PLATING:	35 M.I. TIN	PLATING:	30 M.I. GOLD	PLATING:	30 M.I. GOLD	PLATING:	30 M.I. GOLD	PLATING:	30 M.I. GOLD	
	DRAIN HOLES:	WITHOUT DRAIN HOLES	DRAIN HOLES:	WITHOUT DRAIN HOLES	DRAIN HOLES:	WITHOUT DRAIN HOLES	DRAIN HOLES:	WITHOUT DRAIN HOLES	DRAIN HOLES:	WITHOUT DRAIN HOLES	DRAIN HOLES:	WITHOUT DRAIN HOLES	
	MTG. OPTION:	WITH PEGS	MTG. OPTION:	WITH PEGS	MTG. OPTION:	WITH PEGS	MTG. OPTION:	WITH PEGS	MTG. OPTION:	WITH PEGS	MTG. OPTION:	WITH PEGS	
	HOUSING MAT'L:	NYLON 6/6 94V-2 NATURAL	HOUSING MAT'L:	NYLON 6/6 94V-0 NATURAL	HOUSING MAT'L:	NYLON 6/6 94V-2 NATURAL	HOUSING MAT'L:	NYLON 6/6 94V-2 NATURAL	HOUSING MAT'L:	NYLON 6/6 94V-0 NATURAL	HOUSING MAT'L:	NYLON 6/6 94V-0 NATURAL	
	PACKAGING:	TRAY	PACKAGING:	TRAY	PACKAGING:	TRAY	PACKAGING:	TRAY	PACKAGING:	TRAY	PACKAGING:	TRAY	
I	PART NO.	ENG NO.	CKTS	PART NO.	ENG NO.	CKTS	PART NO.	ENG NO.	CKTS	PART NO.	ENG NO.	CKTS	
	39-29-9023	5566 -02A2	2	39-29-9027	5566 -02A2-2IO	2	39-29-9025	5566 -02A2GS	2	39-29-9029	5566 -02A2GS-2IO	2	
	39-29-9043	5566 -04A2	4	39-29-9047	5566 -04A2-2IO	4	39-29-9045	5566 -04A2GS	4	39-29-9049	5566 -04A2GS-2IO	4	
	39-29-9063	5566 -06A2	6	39-29-9067	5566 -06A2-2IO	6	39-29-9065	5566 -06A2GS	6	39-29-9069	5566 -06A2GS-2IO	6	
	39-29-9083	5566 -08A2	8	39-29-9087	5566 -08A2-2IO	8	39-29-9085	5566 -08A2GS	8	39-29-9089	5566 -08A2GS-2IO	8	
	39-29-9103	5566 -10A2	10	39-29-9107	5566 -10A2-2IO	10	39-29-9105	5566 -10A2GS	10	39-29-9109	5566 -10A2GS-2IO	10	
	39-29-9123	5566 -12A2	12	39-29-9127	5566 -12A2-2IO	12	39-29-9125	5566 -12A2GS	12	39-29-9129	5566 -12A2GS-2IO	12	
	39-29-9143	5566 -14A2	14	39-29-9147	5566 -14A2-2IO	14	39-29-9145	5566 -14A2GS	14	39-29-9149	5566 -14A2GS-2IO	14	
	39-29-9163	5566 -16A2	16	39-29-9167	5566 -16A2-2IO	16	39-29-9165	5566 -16A2GS	16	39-29-9169	5566 -16A2GS-2IO	16	
H	39-29-9183	5566 -18A2	18	39-29-9187	5566 -18A2-2IO	18	39-29-9185	5566 -18A2GS	18	39-29-9189	5566 -18A2GS-2IO	18	
	39-29-9203	5566 -20A2	20	39-29-9207	5566 -20A2-2IO	20	39-29-9205	5566 -20A2GS	20	39-29-9209	5566 -20A2GS-2IO	20	
	39-29-9223	5566 -22A2	22	39-29-9227	5566 -22A2-2IO	22	39-29-9225	5566 -22A2GS	22	39-29-9229	5566 -22A2GS-2IO	22	
	39-29-9243	5566 -24A2	24	39-29-9247	5566 -24A2-2IO	24	39-29-9245	5566 -24A2GS	24	39-29-9249	5566 -24A2GS-2IO	24	
	-	-	-	-	-	-	-	-	-	-	-	-	
	-	-	-	-	-	-	-	-	-	-	-	-	

G	PLATING:	35 M.I. TIN	PLATING:	35 M.I. TIN	PLATING:	30 M.I. GOLD	PLATING:	30 M.I. GOLD	PLATING:	30 M.I. GOLD	PLATING:	30 M.I. GOLD	
	DRAIN HOLES:	WITH DRAIN HOLES	DRAIN HOLES:	WITH DRAIN HOLES	DRAIN HOLES:	WITH DRAIN HOLES	DRAIN HOLES:	WITH DRAIN HOLES	DRAIN HOLES:	WITH DRAIN HOLES	DRAIN HOLES:	WITH DRAIN HOLES	
	MTG. OPTION:	WITH PEGS	MTG. OPTION:	WITH PEGS	MTG. OPTION:	WITH PEGS	MTG. OPTION:	WITH PEGS	MTG. OPTION:	WITH PEGS	MTG. OPTION:	WITH PEGS	
	HOUSING MAT'L:	NYLON 6/6 94V-2 NATURAL	HOUSING MAT'L:	NYLON 6/6 94V-0 NATURAL	HOUSING MAT'L:	NYLON 6/6 94V-2 NATURAL	HOUSING MAT'L:	NYLON 6/6 94V-2 NATURAL	HOUSING MAT'L:	NYLON 6/6 94V-0 NATURAL	HOUSING MAT'L:	NYLON 6/6 94V-0 NATURAL	
	PACKAGING:	TRAY	PACKAGING:	TRAY	PACKAGING:	TRAY	PACKAGING:	TRAY	PACKAGING:	TRAY	PACKAGING:	TRAY	
F	PART NO.	ENG NO.	CKTS	PART NO.	ENG NO.	CKTS	PART NO.	ENG NO.	CKTS	PART NO.	ENG NO.	CKTS	
	39-29-9022	5566 -02B2	2	39-29-9026	5566 -02B2-2IO	2	39-29-9024	5566 -02B2GS	2	39-28-9028	5566 -02B2GS-2IO	2	
	39-29-9042	5566 -04B2	4	39-29-9046	5566 -04B2-2IO	4	39-29-9044	5566 -04B2GS	4	39-28-9048	5566 -04B2GS-2IO	4	
	39-29-9062	5566 -06B2	6	39-29-9066	5566 -06B2-2IO	6	39-29-9064	5566 -06B2GS	6	39-28-9068	5566 -06B2GS-2IO	6	
	39-29-9082	5566 -08B2	8	39-29-9086	5566 -08B2-2IO	8	39-29-9084	5566 -08B2GS	8	39-28-9088	5566 -08B2GS-2IO	8	
	39-29-9102	5566 -10B2	10	39-29-9106	5566 -10B2-2IO	10	39-29-9104	5566 -10B2GS	10	39-28-9108	5566 -10B2GS-2IO	10	
	39-29-9122	5566 -12B2	12	39-29-9126	5566 -12B2-2IO	12	39-29-9124	5566 -12B2GS	12	39-28-9128	5566 -12B2GS-2IO	12	
E	39-29-9142	5566 -14B2	14	39-29-9146	5566 -14B2-2IO	14	39-29-9144	5566 -14B2GS	14	39-28-9148	5566 -14B2GS-2IO	14	
	39-29-9162	5566 -16B2	16	39-29-9166	5566 -16B2-2IO	16	39-29-9164	5566 -16B2GS	16	39-28-9168	5566 -16B2GS-2IO	16	
	39-29-9182	5566 -18B2	18	39-29-9186	5566 -18B2-2IO	18	39-29-9184	5566 -18B2GS	18	39-28-9188	5566 -18B2GS-2IO	18	
	39-29-9202	5566 -20B2	20	39-29-9206	5566 -20B2-2IO	20	39-29-9204	5566 -20B2GS	20	39-28-9208	5566 -20B2GS-2IO	20	
	39-29-9222	5566 -22B2	22	39-29-9226	5566 -22B2-2IO	22	39-29-9224	5566 -22B2GS	22	39-28-9228	5566 -22B2GS-2IO	22	
	39-29-9242	5566 -24B2	24	39-29-9246	5566 -24B2-2IO	24	39-29-9244	5566 -24B2GS	24	39-28-9248	5566 -24B2GS-2IO	24	
	-	-	-	-	-	-	-	-	-	-	-	-	
	-	-	-	-	-	-	-	-	-	-	-	-	

D													
C													
B													
A													

<b>SEE SHEET 1</b> EC NO: UCP2009-1336 DRWN: JKLOSTERMEIER 2008/11/24 CHKD: J.BELL 2008/11/24 APPR: S.MITH 2008/11/24 REV	QUALITY SYMBOLS	GENERAL TOLERANCES (UNLESS SPECIFIED)	DIMENSION STYLE	SCALE	DESIGN UNITS	THIRD ANGLE PROJECTION
	▽=0 ▽=0	4 PLACES ±.--- ±.--- 3 PLACES ±.--- ±.015 2 PLACES ±.38 ±.015 1 PLACE ±.38 ±.--- ANGULAR ±1/2°	IN/MM DRAWN BY: R.J.F. DATE: 8/19/87 CHECKED BY: DATE: 8/19/87 APPROVED BY: R.A.S. DATE: 8/19/87	1:1	METRIC	MINI-FIT JR. VERT HEADER ASSEMBLIES WITH MOUNTING PEGS MOLEX INCORPORATED
		DRAFT WHERE APPLICABLE MUST REMAIN WITHIN DIMENSIONS	SEE CHART			MATERIAL NO. DOCUMENT NO. SDA-5566-N*2*-* SHEET NO. 2
						THIS DRAWING CONTAINS INFORMATION THAT IS PROPRIETARY TO MOLEX INCORPORATED AND SHOULD NOT BE USED WITHOUT WRITTEN PERMISSION

1b_frame_C.P.M.E.T Rev. D. 2004/04/02	12	11	10	9	8	7	6	5	4	3	2	1
--	----	----	----	---	---	---	---	---	---	---	---	---