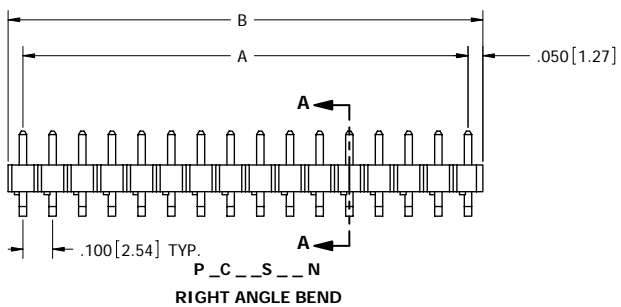
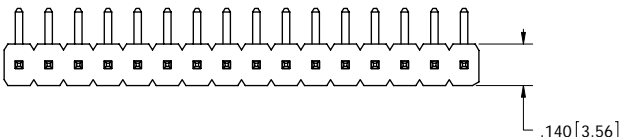


**P \_ C \_ S \_ N**  
**TERMINATION TYPE**  
**NUMBER OF POSITIONS PER ROW**  
 (01 THRU 36)  
**PLATING**  
 ALL PLATINGS HAVE .000050" NICKEL UNDERPLATE  
 CONTACT SURFACE TERMINATION  
 B = .000010" GOLD .000100" PURE TIN, MATTE  
 C = .000030" GOLD .000100" PURE TIN, MATTE  
 E = .000100" PURE TIN, MATTE OVERALL

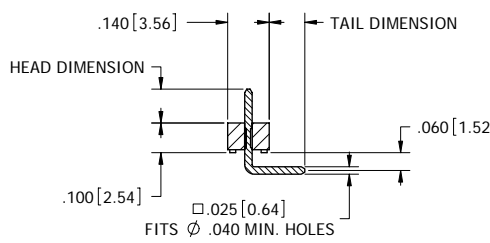
**LEAD FREE**



TERMINATION TYPE RIGHT ANGLE BEND		
TERMINATION CODE	HEAD DIMENSION ±.008[0.20]	TAIL DIMENSION ±.025[0.64]
BA	.230[5.84]	.100[2.54]
BB	.230[5.84]	.200[5.08]
BC	.230[5.84]	.300[7.62]
BD	.230[5.84]	.400[10.16]
BE	.230[5.84]	.500[12.17]
BF	.230[5.84]	.600[15.24]
BG	.230[5.84]	.700[17.78]
GA	.318[8.08]	.100[2.54]
GB	.318[8.08]	.200[5.08]
GC	.318[8.08]	.300[7.62]
GD	.318[8.08]	.400[10.16]
DA	.120[3.05]	.120[3.05]

REVISIONS				
REV.	ECO NO.	DESCRIPTION	DATE	BY
A	1143	INITIAL RELEASE	3/9/2007	SB

PART NUMBER	A		B	
	INCH	MM	INCH	MM
P_C01S_N	0.000	0.00	0.100	2.54
P_C02S_N	0.100	2.54	0.200	5.08
P_C03S_N	0.200	5.08	0.300	7.62
P_C04S_N	0.300	7.62	0.400	10.16
P_C05S_N	0.400	10.16	0.500	12.70
P_C06S_N	0.500	12.70	0.600	15.24
P_C07S_N	0.600	15.24	0.700	17.78
P_C08S_N	0.700	17.78	0.800	20.32
P_C09S_N	0.800	20.32	0.900	22.86
P_C10S_N	0.900	22.86	1.000	25.40
P_C11S_N	1.000	25.40	1.100	27.94
P_C12S_N	1.100	27.94	1.200	30.48
P_C13S_N	1.200	30.48	1.300	33.02
P_C14S_N	1.300	33.02	1.400	35.56
P_C15S_N	1.400	35.56	1.500	38.10
P_C16S_N	1.500	38.10	1.600	40.64
P_C17S_N	1.600	40.64	1.700	43.18
P_C18S_N	1.700	43.18	1.800	45.72
P_C19S_N	1.800	45.72	1.900	48.26
P_C20S_N	1.900	48.26	2.000	50.80
P_C21S_N	2.000	50.80	2.100	53.34
P_C22S_N	2.100	53.34	2.200	55.88
P_C23S_N	2.200	55.88	2.300	58.42
P_C24S_N	2.300	58.42	2.400	60.96
P_C25S_N	2.400	60.96	2.500	63.50
P_C26S_N	2.500	63.50	2.600	66.04
P_C27S_N	2.600	66.04	2.700	68.58
P_C28S_N	2.700	68.58	2.800	71.12
P_C29S_N	2.800	71.12	2.900	73.66
P_C30S_N	2.900	73.66	3.000	76.20
P_C31S_N	3.000	76.20	3.100	78.74
P_C32S_N	3.100	78.74	3.200	81.28
P_C33S_N	3.200	81.28	3.300	83.82
P_C34S_N	3.300	83.82	3.400	86.36
P_C35S_N	3.400	86.36	3.500	88.90
P_C36S_N	3.500	88.90	3.600	91.44



- NOTES:**
- INSULATOR MATERIAL: PBT
  - CONTACT MATERIAL: PHOSPHOR BRONZE
  - PLATING: SEE PART NUMBER CODING
  - TEMPERATURE: -65 °C TO +125 °C
  - PROCESSING TEMP: 260 °C FOR 10 SECONDS MAX
  - UL FLAMMABILITY RATING: 94V-0
  - VOLTAGE RATING: 600 VDC MINIMUM AT SEA LEVEL.
  - CURRENT RATING: 3 AMP PER CONTACT PAIR
  - VOLTAGE DROP: 30 MILLI VOLT AT RATED CURRENT
  - INSULATION RESISTANCE: 5000 MEGA OHM

**SECTION A-A  
SCALE 4 : 1**



**RoHS COMPLIANT**

**CUSTOMER COPY**

UNLESS OTHERWISE SPECIFIED: DIMENSIONS ARE IN INCHES(MM)		DATE	NAME
TOLERANCES: ANGULAR: ± 1° XX = ± .02 [508] XXX = ± .005 [127] XXXX = ± .0005 [12.7] PARENTHETICAL INFORMATION IS FOR REFERENCE ONLY		DRAWN	
INTERPRET DIMENSIONS AND GEOMETRIC TOLERANCING PER: ANSI Y14.5-1984		DESCRIPTION HEADER, .100 CC	
PART NUMBER P_C _ S _ N		REV A	
SIZE C	DWG. NO. C10907	SCALE: 1:1	
SHEET 1 OF 1		FILE NAME: O:\COMPONENTS\Part Assemblies\Customer Drawings\C10907_P_C_S_N.PRT: 7/25/2007	