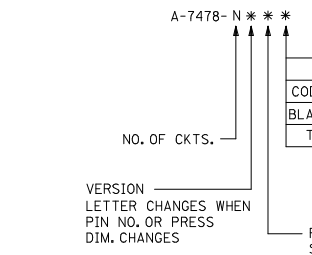
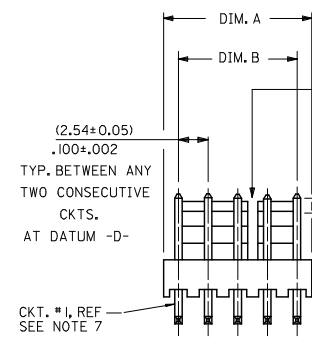
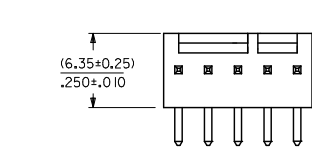
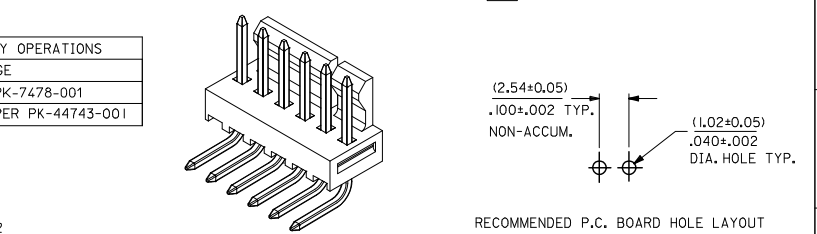
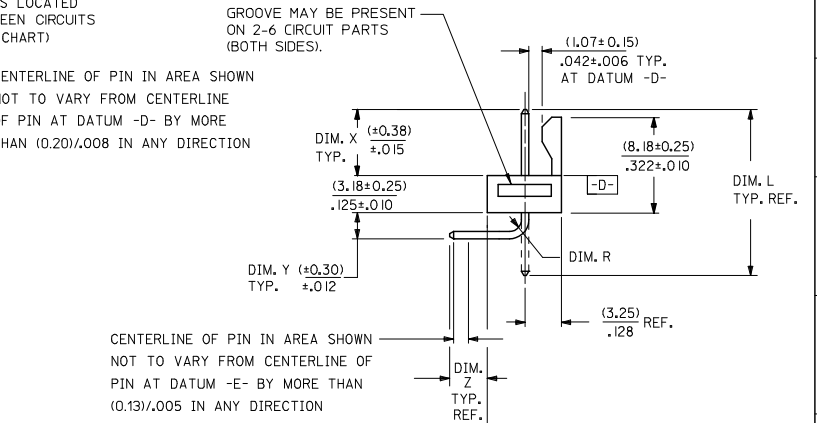


	13	12	11	10	9	8	7	6	5	4	3	2	1
J	28	(71.12 / 70.61) 2.800 / 2.780	(68.58 ± 0.25) 2.700 ± .010	4 , 5 24 , 25									
	27	(68.58 / 68.07) 2.700 / 2.680	(66.04 ± 0.25) 2.600 ± .010	4 , 5 24 , 25									
I	26	(66.04 / 65.53) 2.600 / 2.580	(63.50 ± 0.25) 2.500 ± .010	4 , 5 20 , 21									
	25	(63.50 / 62.99) 2.500 / 2.480	(60.96 ± 0.25) 2.400 ± .010	4 , 5 20 , 21									
H	24	(60.96 / 60.45) 2.400 / 2.380	(58.42 ± 0.25) 2.300 ± .010	4 , 5 20 , 21									
	23	(58.42 / 57.96) 2.300 / 2.282	(55.88 ± 0.23) 2.200 ± .009	4 , 5 20 , 21									
	22	(55.88 / 55.42) 2.200 / 2.182	(53.34 ± 0.23) 2.100 ± .009	4 , 5 16 , 17									
G	21	(53.34 / 52.88) 2.100 / 2.082	(50.80 ± 0.23) 2.000 ± .009	4 , 5 16 , 17									
	20	(50.80 / 50.34) 2.000 / 1.982	(48.26 ± 0.23) 1.900 ± .009	4 , 5 16 , 17									
F	19	(48.26 / 47.80) 1.900 / 1.882	(45.72 ± 0.23) 1.800 ± .009	4 , 5 16 , 17									
	18	(45.72 / 45.31) 1.800 / 1.784	(43.18 ± 0.20) 1.700 ± .008	4 , 5 12 , 13									
E	17	(43.18 / 42.77) 1.700 / 1.684	(40.64 ± 0.20) 1.600 ± .008	4 , 5 12 , 13									
	16	(40.64 / 40.23) 1.600 / 1.584	(38.10 ± 0.20) 1.500 ± .008	4 , 5 12 , 13									
D	15	(38.10 / 37.69) 1.500 / 1.484	(35.56 ± 0.20) 1.400 ± .008	4 , 5 12 , 13									
C	14	(35.56 / 35.20) 1.400 / 1.386	(33.02 ± 0.18) 1.300 ± .007	4 , 5 8 , 9									
	13	(33.02 / 32.66) 1.300 / 1.286	(30.48 ± 0.18) 1.200 ± .007	4 , 5 8 , 9									
B	12	(30.48 / 30.12) 1.200 / 1.186	(27.94 ± 0.18) 1.100 ± .007	4 , 5 8 , 9									
A	11	(27.94 / 27.58) 1.100 / 1.086	(25.40 ± 0.18) 1.000 ± .007	4 , 5 8 , 9									
	10	(25.40 / 25.04) 1.000 / .986	(22.86 ± 0.15) .900 ± .006	4 , 5									
	9	(22.86 / 22.50) .900 / .886	(20.32 ± 0.15) .800 ± .006	4 , 5									
	8	(20.32 / 19.96) .800 / .786	(17.78 ± 0.15) .700 ± .006	4 , 5									
	7	(17.78 / 17.42) .700 / .686	(15.24 ± 0.13) .600 ± .005	4 , 5									
	6	(15.24 / 14.88) .600 / .586	(12.70 ± 0.13) .500 ± .005	4 , 5									
	5	(12.70 / 12.40) .500 / .488	(10.16 ± 0.13) .400 ± .005	NONE									
	4	(10.16 / 9.86) .400 / .388	(7.62 ± 0.13) .300 ± .005	NONE									
	3	(7.62 / 7.32) .300 / .288	(5.08 ± 0.10) .200 ± .004	NONE									
	2	(5.08 / 4.78) .200 / .188	(2.54 ± 0.05) .100 ± .002	NONE									
	B	NO. OF CKTS.	DIM. A	DIM. B	SLOTS LOC.								



NOTES:

- MATERIAL: NYLON, UL94V-0, COLOR: WHITE
- FINISH:
 - (102) - OVERALL TIN: (0.00508)/.000200 MIN., OVERALL COPPER UNDERPLATE: (0.00254)/.000100 MIN.
 - (154) - OVERALL TIN: (0.00254)/.000100 MIN., OVERALL NICKEL UNDERPLATE: (0.00127)/.000050 MIN.
 - (501) - OVERALL GOLD: (0.00051)/.000020 MIN., OVERALL NICKEL UNDERPLATE: (0.00076)/.000030 MIN.
 - (503) - OVERALL GOLD: (0.00076)/.000030 MIN., OVERALL NICKEL UNDERPLATE: (0.00127)/.000050 MIN.
 - (531) - OVERALL GOLD: (0.00038)/.000015 MIN., OVERALL NICKEL UNDERPLATE: (0.00076)/.000030 MIN.
- PARTS CONFORM TO PRODUCT SPECIFICATION PS-10-07.
- PACKAGING INFORMATION: SEE LEGEND.
- PARTS ARE STACKABLE END TO END ON (2.54)/.100 CENTERS.
- PIN PUSH OUT FORCE: 2 LBS. MIN.
- CIRCUIT ONE DESIGNATION IS USED TO DEFINE VOID LOCATION. CIRCUIT ONE MAY OR MAY NOT LINE UP WITH CIRCUIT ONE ON THE MATING HOUSING.
- THIS PART CONFORMS TO CLASS B REQUIREMENTS OF COSMETIC SPECIFICATION PS-45499-002.



SECONDARY OPERATIONS	
CODE	PACKAGE
BLANK	BULK PK-7478-001
T	TUBE PER PK-44743-001

QUALITY SYMBOLS	DESCRIPTION
▽=0	
▽=0	

GENERAL TOLERANCES (UNLESS SPECIFIED)	
	mm
4 PLACES	±.005
3 PLACES	±.010
2 PLACES	±.015
1 PLACE	±.038
ANGULAR ±1/2°	

DIMENSION STYLE	
MM/IN	SCALE
4:1	DESIGN UNITS INCH
THIRD ANGLE PROJECTION	
DRAWN BY: GUZIC DATE: 1987/07/30	
CHECKED BY: PATEL DATE: 1987/07/30	
APPROVED BY: LENZ DATE: 1987/07/30	
MATERIAL NO. SDA-7478	
DOCUMENT NO. SDA-7478	
SHEET NO. 1 OF 7	

		13	12	11	10	9	8	7	6	5	4	3	2	1														
J	ENG. NO.	PIN NO.	DIM. L	DIM. X	DIM. Z	DIM. Y	DIM. W	DIM. R	ENG. NO.	PIN NO.	DIM. L	DIM. X	DIM. Z	DIM. Y	DIM. W	DIM. T												
	A-7478-NA I02	2766-4 (I02)	(18.69) .736	(6.60) .260	(3.58) .141	(3.05) .120	90°	(1.17) .046																				
	A-7478-NA50I	2766-4 (K50 I)	(18.69) .736	(6.60) .260	(3.58) .141	(3.05) .120	90°	(1.17) .046																				
I	A-7478-NA50IT	2766-4 (K50 I)	(18.69) .736	(6.60) .260	(3.58) .141	(3.05) .120	90°	(1.17) .046																				
	A-7478-NA I02T	2766-4 (I02)	(18.69) .736	(6.60) .260	(3.58) .141	(3.05) .120	90°	(1.17) .046																				
H																												
G																												
F																												
E																												
D																												
C																												
B	<table border="1"> <tr> <td rowspan="2"> ADD A-7478-NA I02T SEC NO: UCP2006-1815 DRW: WADERR CHK: KJELHAG APPR: SMITH Y9 </td> <td> QUALITY SYMBOLS ▽=0 ▽=0 </td> <td> GENERAL TOLERANCES (UNLESS SPECIFIED) 4 PLACES ±--- ±--- 3 PLACES ±--- ±--- 2 PLACES ±--- ±--- 1 PLACE ±--- ±--- ANGULAR ±---° </td> <td> DIMENSION STYLE IN/MM </td> <td> SCALE --- </td> <td> DESIGN UNITS INCH </td> <td> THIRD ANGLE PROJECTION </td> </tr> <tr> <td> DRAWN BY: SUZIK CHECKED BY: PATEL APPROVED BY: LENZ </td> <td> DATE: 1987/07/10 DATE: 1987/07/10 DATE: 1987/07/10 </td> <td> TITLE: FRICTION LOCK HEADER ASY .100 CL BENT SQ PINS 7478 SERIES DWG </td> <td> MATERIAL NO.: SEE CHART SIZE: C </td> <td> DOCUMENT NO.: SDA-7478 </td> <td> SHEET NO.: 2 OF 7 </td> </tr> </table>							ADD A-7478-NA I02T SEC NO: UCP2006-1815 DRW: WADERR CHK: KJELHAG APPR: SMITH Y9	QUALITY SYMBOLS ▽=0 ▽=0	GENERAL TOLERANCES (UNLESS SPECIFIED) 4 PLACES ±--- ±--- 3 PLACES ±--- ±--- 2 PLACES ±--- ±--- 1 PLACE ±--- ±--- ANGULAR ±---°	DIMENSION STYLE IN/MM	SCALE ---	DESIGN UNITS INCH	THIRD ANGLE PROJECTION	DRAWN BY: SUZIK CHECKED BY: PATEL APPROVED BY: LENZ	DATE: 1987/07/10 DATE: 1987/07/10 DATE: 1987/07/10	TITLE: FRICTION LOCK HEADER ASY .100 CL BENT SQ PINS 7478 SERIES DWG	MATERIAL NO.: SEE CHART SIZE: C	DOCUMENT NO.: SDA-7478	SHEET NO.: 2 OF 7								
ADD A-7478-NA I02T SEC NO: UCP2006-1815 DRW: WADERR CHK: KJELHAG APPR: SMITH Y9									QUALITY SYMBOLS ▽=0 ▽=0	GENERAL TOLERANCES (UNLESS SPECIFIED) 4 PLACES ±--- ±--- 3 PLACES ±--- ±--- 2 PLACES ±--- ±--- 1 PLACE ±--- ±--- ANGULAR ±---°	DIMENSION STYLE IN/MM	SCALE ---	DESIGN UNITS INCH	THIRD ANGLE PROJECTION														
	DRAWN BY: SUZIK CHECKED BY: PATEL APPROVED BY: LENZ	DATE: 1987/07/10 DATE: 1987/07/10 DATE: 1987/07/10	TITLE: FRICTION LOCK HEADER ASY .100 CL BENT SQ PINS 7478 SERIES DWG	MATERIAL NO.: SEE CHART SIZE: C	DOCUMENT NO.: SDA-7478	SHEET NO.: 2 OF 7																						
A																												

tb_frame_C_P_ME_T
Rev. D 2004/04/02

	13	12	11	10	9	8	7	6	5	4	3	2	1	
	A-7478-NA I02		A-7478-NA50 I		A-7478-NA50 IT		A-7478-NA I02 T							
J	PART NO.	ENG. NO.	PART NO.	ENG. NO.	PART NO.	ENG. NO.	PART NO.	ENG. NO.	PART NO.	ENG. NO.	PART NO.	ENG. NO.	PART NO.	ENG. NO.
	22-05-3021	A-7478-2A I02	22-12-2024	A-7478-2A50 I	50-29-1710	A-7478-2A50 IT	50-34-8500	A-7478-2A I02 T						
	22-05-3031	A-7478-3A I02	22-12-2034	A-7478-3A50 I	50-29-1711	A-7478-3A50 IT	50-34-8501	A-7478-3A I02 T						
	22-05-3041	A-7478-4A I02	22-12-2044	A-7478-4A50 I	50-29-1705	A-7478-4A50 IT	50-34-8502	A-7478-4A I02 T						
I	22-05-3051	A-7478-5A I02	22-12-2054	A-7478-5A50 I	50-29-1712	A-7478-5A50 IT								
	22-05-3061	A-7478-6A I02	22-12-2064	A-7478-6A50 I	50-29-1713	A-7478-6A50 IT								
	22-05-3071	A-7478-7A I02	22-12-2074	A-7478-7A50 I	50-29-1714	A-7478-7A50 IT								
	22-05-3081	A-7478-8A I02	22-12-2084	A-7478-8A50 I	50-29-1715	A-7478-8A50 IT								
	22-05-3091	A-7478-9A I02	22-12-2094	A-7478-9A50 I	50-29-1716	A-7478-9A50 IT								
H	22-05-3101	A-7478-10A I02	22-12-2104	A-7478-10A50 I	50-29-1717	A-7478-10A50 IT								
	22-05-3111	A-7478-11A I02	22-12-2114	A-7478-11A50 I	50-29-1718	A-7478-11A50 IT								
	22-05-3121	A-7478-12A I02	22-12-2124	A-7478-12A50 I	50-29-1719	A-7478-12A50 IT								
	22-05-3131	A-7478-13A I02	22-12-2134	A-7478-13A50 I	50-29-1720	A-7478-13A50 IT								
	22-05-3141	A-7478-14A I02	22-12-2144	A-7478-14A50 I	50-29-1721	A-7478-14A50 IT								
G	22-05-3151	A-7478-15A I02	22-12-2154	A-7478-15A50 I	50-29-1722	A-7478-15A50 IT								
	22-05-3161	A-7478-16A I02	22-12-2164	A-7478-16A50 I	50-29-1723	A-7478-16A50 IT								
	22-05-3171	A-7478-17A I02	22-12-2174	A-7478-17A50 I	50-29-1724	A-7478-17A50 IT								
	22-05-3181	A-7478-18A I02	22-12-2184	A-7478-18A50 I	50-29-1725	A-7478-18A50 IT								
	22-05-3191	A-7478-19A I02	22-12-2194	A-7478-19A50 I	50-29-1726	A-7478-19A50 IT								
F	22-05-3201	A-7478-20A I02	22-12-2204	A-7478-20A50 I	50-29-1727	A-7478-20A50 IT								
	22-05-3211	A-7478-21A I02	22-12-2214	A-7478-21A50 I	50-29-1728	A-7478-21A50 IT								
	22-05-3221	A-7478-22A I02	22-12-2224	A-7478-22A50 I	50-29-1729	A-7478-22A50 IT								
	22-05-3231	A-7478-23A I02	22-12-2234	A-7478-23A50 I	50-29-1730	A-7478-23A50 IT								
	22-05-3241	A-7478-24A I02	22-12-2244	A-7478-24A50 I	50-29-1731	A-7478-24A50 IT								
	22-05-3251	A-7478-25A I02	22-12-2254	A-7478-25A50 I	50-29-1732	A-7478-25A50 IT								
	22-05-3261	A-7478-26A I02	22-12-2264	A-7478-26A50 I	50-29-1733	A-7478-26A50 IT								
E	22-05-3271	A-7478-27A I02	22-12-2274	A-7478-27A50 I	50-29-1734	A-7478-27A50 IT								
	22-05-3281	A-7478-28A I02	22-12-2284	A-7478-28A50 I	50-29-1735	A-7478-28A50 IT								
D														
C														
B														
A														

ADD PINS EC NO. UCP2006-1815 2006/02/06 DRW:ADBR 2006/02/06 CHK:KJELHAG 2006/02/06 APP:RSMITH 2006/02/09 REV Y9	QUALITY SYMBOLS ▽=0 ▽=0	GENERAL TOLERANCES (UNLESS SPECIFIED) <table border="1"> <tr> <td></td> <td>mm</td> <td>INCH</td> </tr> <tr> <td>4 PLACES</td> <td>±.000</td> <td>±.000</td> </tr> <tr> <td>3 PLACES</td> <td>±.000</td> <td>±.000</td> </tr> <tr> <td>2 PLACES</td> <td>±.000</td> <td>±.000</td> </tr> <tr> <td>1 PLACE</td> <td>±.000</td> <td>±.000</td> </tr> <tr> <td colspan="3">ANGULAR ±.000°</td> </tr> </table>		mm	INCH	4 PLACES	±.000	±.000	3 PLACES	±.000	±.000	2 PLACES	±.000	±.000	1 PLACE	±.000	±.000	ANGULAR ±.000°			DIMENSION STYLE IN/MM	SCALE ---	DESIGN UNITS INCH	THIRD ANGLE PROJECTION
		mm	INCH																					
	4 PLACES	±.000	±.000																					
	3 PLACES	±.000	±.000																					
2 PLACES	±.000	±.000																						
1 PLACE	±.000	±.000																						
ANGULAR ±.000°																								
DRAWN BY SUZIK DATE 1987/07/10	CHECKED BY PATEL DATE 1987/07/10	APPROVED BY LENZ DATE 1987/07/10	MATERIAL NO. SEE CHART	DOCUMENT NO. SDA-7478	SHEET NO. 3 OF 7	TITLE FRICTION LOCK HEADER ASY .100 CL BENT SQ PINS 7478 SERIES DWG. MOLEX INCORPORATED																		
DRAFT WHERE APPLICABLE MUST REMAIN WITHIN DIMENSIONS																								
THIS DRAWING CONTAINS INFORMATION THAT IS PROPRIETARY TO MOLEX INCORPORATED AND SHOULD NOT BE USED WITHOUT WRITTEN PERMISSION																								

tb_frame_C_P_ME_T
Rev. D 2004/04/02