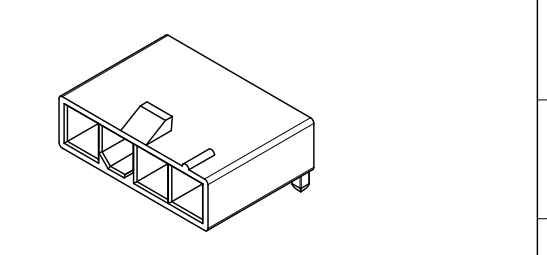
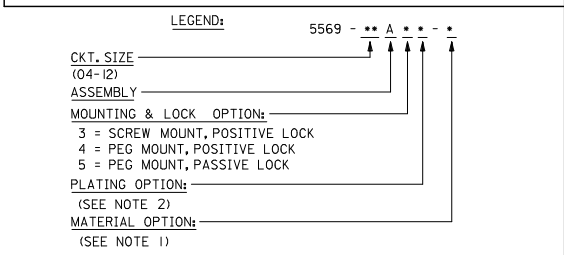
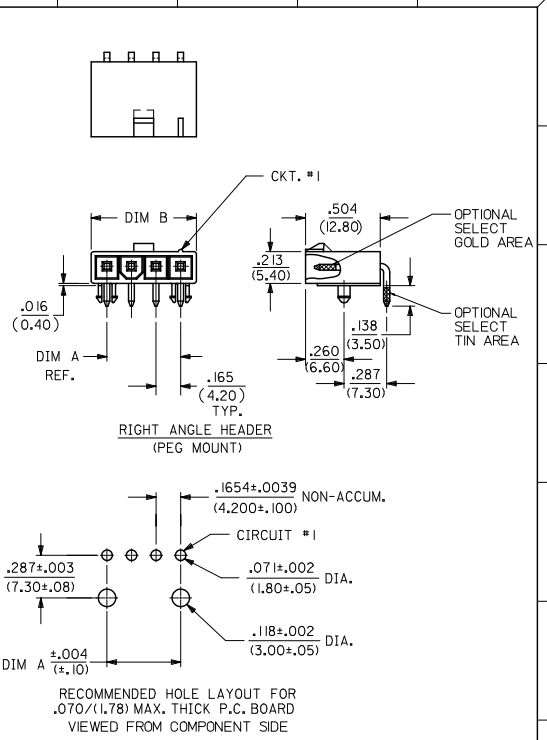
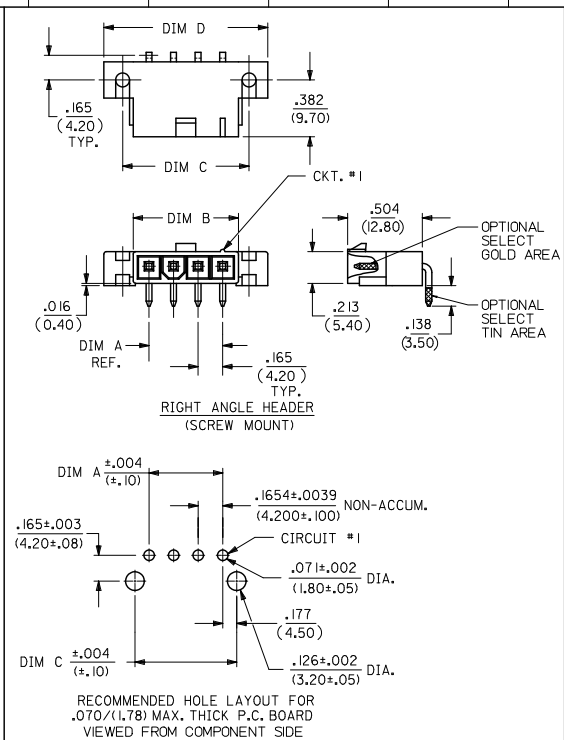


CKT SIZE	DIM A	DIM B	DIM C	DIM D
4	.496 (12.60)	.709 (18.00)	.850 (21.60)	1.102 (28.00)
5	.661 (16.80)	.874 (22.20)	1.016 (25.80)	1.268 (32.20)
6	.827 (21.00)	1.039 (26.40)	1.181 (30.00)	1.433 (36.40)
7	.992 (25.20)	1.205 (30.60)	1.346 (34.20)	1.598 (40.60)
8	1.157 (29.40)	1.370 (34.80)	1.512 (38.40)	1.764 (44.80)
9	1.323 (33.60)	1.535 (39.00)	1.677 (42.60)	1.929 (49.00)
10	1.488 (37.80)	1.701 (43.20)	1.843 (46.80)	2.094 (53.20)
11	1.654 (42.00)	1.866 (47.40)	2.008 (51.00)	2.260 (57.40)
12	1.819 (46.20)	2.031 (51.60)	2.173 (55.20)	2.425 (61.60)

- NOTES:
- HOUSING MATERIAL:
 BLANK = NYLON 6/6, U.L. 94V-2, COLOR: NATURAL.
 210 = NYLON 6/6, U.L. 94V-0, COLOR: NATURAL.
 BL = NYLON 6/6, U.L. 94V-2, COLOR: BLACK.
 400 = NYLON 6/6, U.L. 94V-0, COLOR: BLACK.
 TERMINAL MATERIAL: BRASS, ALLOY 260.
 - TERMINAL PLATING:
 BLANK - .000200/(.00508) MIN. TIN OVER
 .000100/(.00254) MIN. COPPER OVERALL.
 G - .000030/(.00076) MIN. GOLD OVER
 .000050/(.00127) MIN. NICKEL OVERALL.
 GS - .000030/(.00076) MIN. SELECT GOLD AND
 .000100/(.00127) MIN. SELECT MATTE TIN OVER
 .000050/(.00127) MIN. NICKEL OVERALL.
 G2 - .000015/(.00038) MIN. GOLD OVER
 .000030/(.00076) MIN. NICKEL OVERALL.
 GS2 - .00015/(.00038) MIN. SELECT GOLD AND
 .000100/(.00254) MIN. SELECT MATTE TIN OVER
 .000050/(.00127) MIN. NICKEL OVERALL.
 G3 - .000050/(.00127) MIN. GOLD OVER
 .000050/(.00127) MIN. NICKEL OVERALL.
 S - .000100/(.00254) MIN. BRIGHT TIN OVER
 .000050/(.00127) MIN. NICKEL OVERALL.
 GS - .000030/(.00076) MIN. SELECT GOLD,
 .000100/(.00254) MIN. SELECT MATTE TIN
 OVER .000050/(.00127) MIN. NICKEL OVERALL.
 RM - .000060/(.00152) MIN. REFLOWED MATTE TIN
 OVER .000050/(.00127) MIN. NICKEL OVERALL.
 MS - .000100/(.00254) MIN. MATTE TIN OVER
 .000050/(.00127) MIN. NICKEL OVERALL.
 - PRODUCT SPECIFICATION: PS-5556-001
 - PACKAGING SPECIFICATION: BULK PACK PER PK-5569-002
 - PART MATES WITH MOLEX RECEPTACLE #5557.
 - PART IS DESIGNED FOR USE WITH 4 - 40 OR M3 SCREWS.
 - DISCOLORATION IN THE BANDOLIER CARRIER AREA OF THE PIN IS INHERENT TO THE PLATING PROCESS AND IS DUE TO THE MASKING EFFECT OF THE CARRIER. THIS DISCOLORATION IS IN A NON-FUNCTIONAL AREA OF THE PIN AND WILL NOT AFFECT THE PERFORMANCE OF THE HEADER ASSEMBLY.
 - CONNECTORS ARE NOT TO BE MATED OR UNMATED WHILE CIRCUIT ARE LIVE.
 - PARTS NOT DESIGNED FOR CURRENT SHARING.
 - PART CONFORMS TO CLASS "B" REQUIREMENTS OF COSMETIC SPECIFICATION PS-45499-002.



ADDED MS OPTION EC NO. UCP2011-2342 DRWN: JAGUILAR 2011/02/04 CHKD: BELL 2011/02/11 APPR: SMITH 2011/02/11	QUALITY SYMBOLS ▽=0 ▽=0 ▽=0	GENERAL TOLERANCES (UNLESS SPECIFIED)	DIMENSION STYLE		SCALE 2:1	DESIGN UNITS METRIC	THIRD ANGLE PROJECTION
			mm	INCH			
P6	REVISION	4 PLACES ± .015	3 PLACES ± .015	2 PLACES ± .030	1 PLACE ± .030	DRAWN BY KSS DATE 2/14/89	
		ANGULAR ± 3°				CHECKED BY RJF DATE 2/14/89	
DRAFT WHERE APPLICABLE MUST REMAIN WITHIN DIMENSIONS		SEE CHARTS		APPROVED BY RAS DATE 2/14/89		TITLE RIGHT ANGLE HEADER ASSY (SINGLE ROW) (MINI-FIT JR. SERIES)	
				MATERIAL NO. SDA-5569-NL*		MOLEX INCORPORATED	
				DOCUMENT NO.		SHEET NO. 1 OF 4	

13		12		11		10		9		8		7		6		5		4		3		2		1	
E.D.P. NO.	ENG. NO.	CKT. SIZE	MOUNTING OPTION	LOCK OPTION	PLATING (SEE NOTE 2)	MAT'L. (SEE NOTE 1)							E.D.P. NO.	ENG. NO.	CKT. SIZE	MOUNTING OPTION	LOCK OPTION	PLATING (SEE NOTE 2)	MAT'L. (SEE NOTE 1)						
39-30-3041	5569-04A3	4	SCREWS	POSITIVE	TIN/COPPER	94V-2							39-30-3049	5569-04A4G2	4	PEGS	POSITIVE	15 GOLD	94V-2						
39-30-3051	5569-05A3	5	SCREWS	POSITIVE	TIN/COPPER	94V-2							39-30-3059	5569-05A4G2	5	PEGS	POSITIVE	15 GOLD	94V-2						
39-30-3061	5569-06A3	6	SCREWS	POSITIVE	TIN/COPPER	94V-2							39-30-3069	5569-06A4G2	6	PEGS	POSITIVE	15 GOLD	94V-2						
39-30-3071	5569-07A3	7	SCREWS	POSITIVE	TIN/COPPER	94V-2							39-30-3079	5569-07A4G2	7	PEGS	POSITIVE	15 GOLD	94V-2						
39-30-3081	5569-08A3	8	SCREWS	POSITIVE	TIN/COPPER	94V-2							39-30-3089	5569-08A4G2	8	PEGS	POSITIVE	15 GOLD	94V-2						
39-30-3091	5569-09A3	9	SCREWS	POSITIVE	TIN/COPPER	94V-2							39-30-3099	5569-09A4G2	9	PEGS	POSITIVE	15 GOLD	94V-2						
39-30-3101	5569-10A3	10	SCREWS	POSITIVE	TIN/COPPER	94V-2							39-30-3109	5569-10A4G2	10	PEGS	POSITIVE	15 GOLD	94V-2						
39-30-3111	5569-11A3	11	SCREWS	POSITIVE	TIN/COPPER	94V-2							39-30-3119	5569-11A4G2	11	PEGS	POSITIVE	15 GOLD	94V-2						
39-30-3121	5569-12A3	12	SCREWS	POSITIVE	TIN/COPPER	94V-2							39-30-3129	5569-12A4G2	12	PEGS	POSITIVE	15 GOLD	94V-2						
39-30-3042	5569-04A3-210	4	SCREWS	POSITIVE	TIN/COPPER	94V-0							39-30-4040	5569-04A4G2-210	4	PEGS	POSITIVE	15 GOLD	94V-0						
39-30-3052	5569-05A3-210	5	SCREWS	POSITIVE	TIN/COPPER	94V-0							39-30-4050	5569-05A4G2-210	5	PEGS	POSITIVE	15 GOLD	94V-0						
39-30-3062	5569-06A3-210	6	SCREWS	POSITIVE	TIN/COPPER	94V-0							39-30-4060	5569-06A4G2-210	6	PEGS	POSITIVE	15 GOLD	94V-0						
39-30-3072	5569-07A3-210	7	SCREWS	POSITIVE	TIN/COPPER	94V-0							39-30-4070	5569-07A4G2-210	7	PEGS	POSITIVE	15 GOLD	94V-0						
39-30-3082	5569-08A3-210	8	SCREWS	POSITIVE	TIN/COPPER	94V-0							39-30-4080	5569-08A4G2-210	8	PEGS	POSITIVE	15 GOLD	94V-0						
39-30-3092	5569-09A3-210	9	SCREWS	POSITIVE	TIN/COPPER	94V-0							39-30-4090	5569-09A4G2-210	9	PEGS	POSITIVE	15 GOLD	94V-0						
39-30-3102	5569-10A3-210	10	SCREWS	POSITIVE	TIN/COPPER	94V-0							39-30-4100	5569-10A4G2-210	10	PEGS	POSITIVE	15 GOLD	94V-0						
39-30-3112	5569-11A3-210	11	SCREWS	POSITIVE	TIN/COPPER	94V-0							39-30-4110	5569-11A4G2-210	11	PEGS	POSITIVE	15 GOLD	94V-0						
39-30-3122	5569-12A3-210	12	SCREWS	POSITIVE	TIN/COPPER	94V-0							39-30-4120	5569-12A4G2-210	12	PEGS	POSITIVE	15 GOLD	94V-0						
39-30-3045	5569-04A4	4	PEGS	POSITIVE	TIN/COPPER	94V-2							39-30-3043	5569-04A3G	4	SCREWS	POSITIVE	30 GOLD	94V-2						
39-30-3055	5569-05A4	5	PEGS	POSITIVE	TIN/COPPER	94V-2							39-30-3053	5569-05A3G	5	SCREWS	POSITIVE	30 GOLD	94V-2						
39-30-3065	5569-06A4	6	PEGS	POSITIVE	TIN/COPPER	94V-2							39-30-3063	5569-06A3G	6	SCREWS	POSITIVE	30 GOLD	94V-2						
39-30-3075	5569-07A4	7	PEGS	POSITIVE	TIN/COPPER	94V-2							39-30-3073	5569-07A3G	7	SCREWS	POSITIVE	30 GOLD	94V-2						
39-30-3085	5569-08A4	8	PEGS	POSITIVE	TIN/COPPER	94V-2							39-30-3083	5569-08A3G	8	SCREWS	POSITIVE	30 GOLD	94V-2						
39-30-3095	5569-09A4	9	PEGS	POSITIVE	TIN/COPPER	94V-2							39-30-3093	5569-09A3G	9	SCREWS	POSITIVE	30 GOLD	94V-2						
39-30-3105	5569-10A4	10	PEGS	POSITIVE	TIN/COPPER	94V-2							39-30-3103	5569-10A3G	10	SCREWS	POSITIVE	30 GOLD	94V-2						
39-30-3115	5569-11A4	11	PEGS	POSITIVE	TIN/COPPER	94V-2							39-30-3113	5569-11A3G	11	SCREWS	POSITIVE	30 GOLD	94V-2						
39-30-3125	5569-12A4	12	PEGS	POSITIVE	TIN/COPPER	94V-2							39-30-3123	5569-12A3G	12	SCREWS	POSITIVE	30 GOLD	94V-2						
39-30-3046	5569-04A4-210	4	PEGS	POSITIVE	TIN/COPPER	94V-0							39-30-7041	5569-04A4S	4	PEGS	POSITIVE	TIN/NICKEL	94V-2						
39-30-3056	5569-05A4-210	5	PEGS	POSITIVE	TIN/COPPER	94V-0							39-30-7051	5569-05A4S	5	PEGS	POSITIVE	TIN/NICKEL	94V-2						
39-30-3066	5569-06A4-210	6	PEGS	POSITIVE	TIN/COPPER	94V-0							39-30-7061	5569-06A4S	6	PEGS	POSITIVE	TIN/NICKEL	94V-2						
39-30-3076	5569-07A4-210	7	PEGS	POSITIVE	TIN/COPPER	94V-0							39-30-7071	5569-07A4S	7	PEGS	POSITIVE	TIN/NICKEL	94V-2						
39-30-3086	5569-08A4-210	8	PEGS	POSITIVE	TIN/COPPER	94V-0							39-30-7081	5569-08A4S	8	PEGS	POSITIVE	TIN/NICKEL	94V-2						
39-30-3096	5569-09A4-210	9	PEGS	POSITIVE	TIN/COPPER	94V-0							39-30-7091	5569-09A4S	9	PEGS	POSITIVE	TIN/NICKEL	94V-2						
39-30-3106	5569-10A4-210	10	PEGS	POSITIVE	TIN/COPPER	94V-0							39-30-7101	5569-10A4S	10	PEGS	POSITIVE	TIN/NICKEL	94V-2						
39-30-3116	5569-11A4-210	11	PEGS	POSITIVE	TIN/COPPER	94V-0							39-30-7111	5569-11A4S	11	PEGS	POSITIVE	TIN/NICKEL	94V-2						
39-30-3126	5569-12A4-210	12	PEGS	POSITIVE	TIN/COPPER	94V-0							39-30-7121	5569-12A4S	12	PEGS	POSITIVE	TIN/NICKEL	94V-2						
39-30-3047	5569-04A4G	4	PEGS	POSITIVE	30 GOLD	94V-2							39-30-7042	5569-04A4S-210	4	PEGS	POSITIVE	TIN/NICKEL	94V-0						
39-30-3057	5569-05A4G	5	PEGS	POSITIVE	30 GOLD	94V-2							39-30-7052	5569-05A4S-210	5	PEGS	POSITIVE	TIN/NICKEL	94V-0						
39-30-3067	5569-06A4G	6	PEGS	POSITIVE	30 GOLD	94V-2							39-30-7062	5569-06A4S-210	6	PEGS	POSITIVE	TIN/NICKEL	94V-0						
39-30-3077	5569-07A4G	7	PEGS	POSITIVE	30 GOLD	94V-2							39-30-7072	5569-07A4S-210	7	PEGS	POSITIVE	TIN/NICKEL	94V-0						
39-30-3087	5569-08A4G	8	PEGS	POSITIVE	30 GOLD	94V-2							39-30-7082	5569-08A4S-210	8	PEGS	POSITIVE	TIN/NICKEL	94V-0						
39-30-3097	5569-09A4G	9	PEGS	POSITIVE	30 GOLD	94V-2							39-30-7092	5569-09A4S-210	9	PEGS	POSITIVE	TIN/NICKEL	94V-0						
39-30-3107	5569-10A4G	10	PEGS	POSITIVE	30 GOLD	94V-2							39-30-7102	5569-10A4S-210	10	PEGS	POSITIVE	TIN/NICKEL	94V-0						
39-30-3117	5569-11A4G	11	PEGS	POSITIVE	30 GOLD	94V-2							39-30-7112	5569-11A4S-210	11	PEGS	POSITIVE	TIN/NICKEL	94V-0						
39-30-3127	5569-12A4G	12	PEGS	POSITIVE	30 GOLD	94V-2							39-30-7122	5569-12A4S-210	12	PEGS	POSITIVE	TIN/NICKEL	94V-0						
39-30-3048	5569-04A4G-210	4	PEGS	POSITIVE	30 GOLD	94V-0							50-34-8578	5569-04A4RM-210	4	PEGS	POSITIVE	REFLOW/NICKEL	94V-0						
39-30-3058	5569-05A4G-210	5	PEGS	POSITIVE	30 GOLD	94V-0							50-34-8579	5569-05A4RM-210	5	PEGS	POSITIVE	REFLOW/NICKEL	94V-0						
39-30-3068	5569-06A4G-210	6	PEGS	POSITIVE	30 GOLD	94V-0							46999-0097	5569-04A4RM	4	PEGS	POSITIVE	REFLOW/NICKEL	94V-2						
39-30-3078	5569-07A4G-210	7	PEGS	POSITIVE	30 GOLD	94V-0							46999-0098	5569-05A4RM	5	PEGS	POSITIVE	REFLOW/NICKEL	94V-2						
39-30-3088	5569-08A4G-210	8	PEGS	POSITIVE	30 GOLD	94V-0							46999-0099	5569-04A4MS	4	PEGS	POSITIVE	MATTE/NICKEL	94V-2						
39-30-3098	5569-09A4G-210	9	PEGS	POSITIVE	30 GOLD	94V-0							46999-0100	5569-05A4MS	5	PEGS	POSITIVE	MATTE/NICKEL	94V-2						
39-30-3108	5569-10A4G-210	10	PEGS	POSITIVE	30 GOLD	94V-0																			
39-30-3118	5569-11A4G-210	11	PEGS	POSITIVE	30 GOLD	94V-0																			
39-30-3128	5569-12A4G-210	12	PEGS	POSITIVE	30 GOLD	94V-0																			

SEE SHEET 1
 EC NO. UCF2011-2342
 DRAWN: JAGUIAR 2011/02/04
 CHECKED: BELL 2011/02/04
 APPR: SMITH 2011/02/11

QUALITY SYMBOLS ∇=0 ∇=0 ∇=0	GENERAL TOLERANCES (UNLESS SPECIFIED)		DIMENSION STYLE		SCALE	DESIGN UNITS	THIRD ANGLE PROJECTION
	4 PLACES ± .15	3 PLACES ± .10	2 PLACES ± .08	1 PLACE ± .05	IN/MM	METRIC	
	ANGULAR ± 3°		DRAWN BY DATE		TITLE		
	DRAFT WHERE APPLICABLE MUST REMAIN WITHIN DIMENSIONS		KSS 2/14/89		RIGHT ANGLE HEADER ASSY (SINGLE ROW) (MINI-FIT JR. SERIES)		
		CHECKED BY DATE		APPROVED BY DATE		MATERIAL NO. DOCUMENT NO.	
		R/JF 2/14/89		RAS 2/14/89		MOLEX MOLEX INCORPORATED	
		SEE TABLE		SDA-5569-NL*		SHEET NO. 2 OF 4	

THIS DRAWING CONTAINS INFORMATION THAT IS PROPRIETARY TO MOLEX INCORPORATED AND SHOULD NOT BE USED WITHOUT WRITTEN PERMISSION

	13	12	11	10	9	8	7	6	5	4	3	2	1		
	E.D.P. NO.	ENG. NO.	CKT. SIZE	MOUNTING OPTION	LOCK OPTION	PLATING (SEE NOTE 2)	MAT'L. (SEE NOTE 1)		E.D.P. NO.	ENG. NO.	CKT. SIZE	MOUNTING OPTION	LOCK OPTION	PLATING (SEE NOTE 2)	MAT'L. (SEE NOTE 1)
J	NO E.D.P.	5569-04A5	4	PEGS	PASSIVE	TIN/COPPER	94V-2		NO E.D.P.	5569-04A4GS-400	4	PEG	POSITIVE	30 GOLD	94V-0
	15-24-1501	5569-05A5	5	PEGS	PASSIVE	TIN/COPPER	94V-2		50-30-4436	5569-05A4GS-400	5	PEG	POSITIVE	30 GOLD	94V-0
	NO E.D.P.	5569-06A5	6	PEGS	PASSIVE	TIN/COPPER	94V-2		NO E.D.P.	5569-06A4GS-400	6	PEG	POSITIVE	30 GOLD	94V-0
	NO E.D.P.	5569-07A5	7	PEGS	PASSIVE	TIN/COPPER	94V-2		NO E.D.P.	5569-07A4GS-400	7	PEG	POSITIVE	30 GOLD	94V-0
	NO E.D.P.	5569-08A5	8	PEGS	PASSIVE	TIN/COPPER	94V-2		NO E.D.P.	5569-08A4GS-400	8	PEG	POSITIVE	30 GOLD	94V-0
	NO E.D.P.	5569-09A5	9	PEGS	PASSIVE	TIN/COPPER	94V-2		NO E.D.P.	5569-09A4GS-400	9	PEG	POSITIVE	30 GOLD	94V-0
	NO E.D.P.	5569-10A5	10	PEGS	PASSIVE	TIN/COPPER	94V-2		NO E.D.P.	5569-10A4GS-400	10	PEG	POSITIVE	30 GOLD	94V-0
I	NO E.D.P.	5569-11A5	11	PEGS	PASSIVE	TIN/COPPER	94V-2		NO E.D.P.	5569-11A4GS-400	11	PEG	POSITIVE	30 GOLD	94V-0
	NO E.D.P.	5569-12A5	12	PEGS	PASSIVE	TIN/COPPER	94V-2		NO E.D.P.	5569-12A4GS-400	12	PEG	POSITIVE	30 GOLD	94V-0
	NO E.D.P.	5569-04A5-210	4	PEGS	PASSIVE	TIN/COPPER	94V-0		50-30-4438	5569-04A4GS	4	PEG	POSITIVE	30 GOLD	94V-2
	15-24-1503	5569-05A5-210	5	PEGS	PASSIVE	TIN/COPPER	94V-0		50-30-4439	5569-05A4GS	5	PEG	POSITIVE	30 GOLD	94V-2
	NO E.D.P.	5569-06A5-210	6	PEGS	PASSIVE	TIN/COPPER	94V-0		NO E.D.P.	5569-06A4GS	6	PEG	POSITIVE	30 GOLD	94V-2
	NO E.D.P.	5569-07A5-210	7	PEGS	PASSIVE	TIN/COPPER	94V-0		NO E.D.P.	5569-07A4GS	7	PEG	POSITIVE	30 GOLD	94V-2
H	NO E.D.P.	5569-08A5-210	8	PEGS	PASSIVE	TIN/COPPER	94V-0		NO E.D.P.	5569-08A4GS	8	PEG	POSITIVE	30 GOLD	94V-2
	NO E.D.P.	5569-09A5-210	9	PEGS	PASSIVE	TIN/COPPER	94V-0		NO E.D.P.	5569-09A4GS	9	PEG	POSITIVE	30 GOLD	94V-2
	NO E.D.P.	5569-10A5-210	10	PEGS	PASSIVE	TIN/COPPER	94V-0		NO E.D.P.	5569-10A4GS	10	PEG	POSITIVE	30 GOLD	94V-2
	NO E.D.P.	5569-11A5-210	11	PEGS	PASSIVE	TIN/COPPER	94V-0		NO E.D.P.	5569-11A4GS	11	PEG	POSITIVE	30 GOLD	94V-2
	NO E.D.P.	5569-12A5-210	12	PEGS	PASSIVE	TIN/COPPER	94V-0		NO E.D.P.	5569-12A4GS	12	PEG	POSITIVE	30 GOLD	94V-2
G	15-27-1501	5569-05A5G2	5	PEGS	PASSIVE	I5 GOLD	94V-2		50-30-4441	5569-04A4GS-210	4	PEG	POSITIVE	30 GOLD	94V-0
	NO E.D.P.	5569-06A5G2	6	PEGS	PASSIVE	I5 GOLD	94V-2		50-30-4442	5569-05A4GS-210	5	PEG	POSITIVE	30 GOLD	94V-0
	NO E.D.P.	5569-07A5G2	7	PEGS	PASSIVE	I5 GOLD	94V-2		NO E.D.P.	5569-06A4GS-210	6	PEG	POSITIVE	30 GOLD	94V-0
	NO E.D.P.	5569-08A5G2	8	PEGS	PASSIVE	I5 GOLD	94V-2		NO E.D.P.	5569-07A4GS-210	7	PEG	POSITIVE	30 GOLD	94V-0
	NO E.D.P.	5569-09A5G2	9	PEGS	PASSIVE	I5 GOLD	94V-2		NO E.D.P.	5569-08A4GS-210	8	PEG	POSITIVE	30 GOLD	94V-0
	NO E.D.P.	5569-10A5G2	10	PEGS	PASSIVE	I5 GOLD	94V-2		NO E.D.P.	5569-09A4GS-210	9	PEG	POSITIVE	30 GOLD	94V-0
	NO E.D.P.	5569-11A5G2	11	PEGS	PASSIVE	I5 GOLD	94V-2		NO E.D.P.	5569-10A4GS-210	10	PEG	POSITIVE	30 GOLD	94V-0
	NO E.D.P.	5569-12A5G2	12	PEGS	PASSIVE	I5 GOLD	94V-2		NO E.D.P.	5569-11A4GS-210	11	PEG	POSITIVE	30 GOLD	94V-0
F	39-31-1042	5569-04A4-BL	4	PEGS	POSITIVE	TIN/COPPER	94V-2 BLACK		50-30-4443	5569-04A3GS	4	SCREW	POSITIVE	30 GOLD	94V-2
	39-31-1052	5569-05A4-BL	5	PEGS	POSITIVE	TIN/COPPER	94V-2 BLACK		NO E.D.P.	5569-05A3GS	5	SCREW	POSITIVE	30 GOLD	94V-2
	39-31-1062	5569-06A4-BL	6	PEGS	POSITIVE	TIN/COPPER	94V-2 BLACK		NO E.D.P.	5569-06A3GS	6	SCREW	POSITIVE	30 GOLD	94V-2
	39-31-1072	5569-07A4-BL	7	PEGS	POSITIVE	TIN/COPPER	94V-2 BLACK		NO E.D.P.	5569-07A3GS	7	SCREW	POSITIVE	30 GOLD	94V-2
	39-31-1082	5569-08A4-BL	8	PEGS	POSITIVE	TIN/COPPER	94V-2 BLACK		NO E.D.P.	5569-08A3GS	8	SCREW	POSITIVE	30 GOLD	94V-2
	39-31-1092	5569-09A4-BL	9	PEGS	POSITIVE	TIN/COPPER	94V-2 BLACK		NO E.D.P.	5569-09A3GS	9	SCREW	POSITIVE	30 GOLD	94V-2
E	39-31-1102	5569-10A4-BL	10	PEGS	POSITIVE	TIN/COPPER	94V-2 BLACK		NO E.D.P.	5569-10A3GS	10	SCREW	POSITIVE	30 GOLD	94V-2
	39-31-1112	5569-11A4-BL	11	PEGS	POSITIVE	TIN/COPPER	94V-2 BLACK		NO E.D.P.	5569-11A3GS	11	SCREW	POSITIVE	30 GOLD	94V-2
	39-31-1122	5569-12A4-BL	12	PEGS	POSITIVE	TIN/COPPER	94V-2 BLACK		NO E.D.P.	5569-12A3GS	12	SCREW	POSITIVE	30 GOLD	94V-2
	39-30-6049	5569-04A3S	4	SCREWS	POSITIVE	TIN/NICKEL	94V-2		NO E.D.P.	5569-04A4-400	4	PEG	POSITIVE	TIN/COPPER	94V-2 BLACK
	NO E.D.P.	5569-05A3S	5	SCREWS	POSITIVE	TIN/NICKEL	94V-2		NO E.D.P.	5569-05A4-400	5	PEG	POSITIVE	TIN/COPPER	94V-2 BLACK
D	NO E.D.P.	5569-06A3S	6	SCREWS	POSITIVE	TIN/NICKEL	94V-2		NO E.D.P.	5569-06A4-400	6	PEG	POSITIVE	TIN/COPPER	94V-2 BLACK
	NO E.D.P.	5569-07A3S	7	SCREWS	POSITIVE	TIN/NICKEL	94V-2		NO E.D.P.	5569-07A4-400	7	PEG	POSITIVE	TIN/COPPER	94V-2 BLACK
	NO E.D.P.	5569-08A3S	8	SCREWS	POSITIVE	TIN/NICKEL	94V-2		NO E.D.P.	5569-08A4-400	8	PEG	POSITIVE	TIN/COPPER	94V-2 BLACK
	NO E.D.P.	5569-09A3S	9	SCREWS	POSITIVE	TIN/NICKEL	94V-2		NO E.D.P.	5569-09A4-400	9	PEG	POSITIVE	TIN/COPPER	94V-2 BLACK
	NO E.D.P.	5569-10A3S	10	SCREWS	POSITIVE	TIN/NICKEL	94V-2		NO E.D.P.	5569-10A4-400	10	PEG	POSITIVE	TIN/COPPER	94V-2 BLACK
	NO E.D.P.	5569-11A3S	11	SCREWS	POSITIVE	TIN/NICKEL	94V-2		NO E.D.P.	5569-11A4-400	11	PEG	POSITIVE	TIN/COPPER	94V-2 BLACK
	NO E.D.P.	5569-12A3S	12	SCREWS	POSITIVE	TIN/NICKEL	94V-2		NO E.D.P.	5569-12A4-400	12	PEG	POSITIVE	TIN/COPPER	94V-2 BLACK

SEE SHEET 1
 EC NO. UEP2011-2342
 DRAWN: JAGUILAR 2011/02/04
 CHKD: BELL 2011/02/04
 APPR: SMITH 2011/02/11

QUALITY SYMBOLS
 ▽=0
 ▽=0
 ▽=0

GENERAL TOLERANCES (UNLESS SPECIFIED)
 4 PLACES ±.000 ±.000
 3 PLACES ±.005 ±.015
 2 PLACES ±.030 ±.040
 1 PLACE ±.060 ±.080
 ANGULAR ± 3°

DIMENSION STYLE IN/MM
 DRAWN BY DATE KSS 2/14/89
 CHECKED BY DATE R/JF 2/14/89
 APPROVED BY DATE RAS 2/14/89

SCALE DESIGN UNITS METRIC
 THIRD ANGLE PROJECTION

RIGHT ANGLE HEADER ASSY (SINGLE ROW) (MINI-FIT JR. SERIES)
MOLEX INCORPORATED

MATERIAL NO. SDA-5569-NL*
 DOCUMENT NO. SHEET NO. 3 OF 4

DRAFT WHERE APPLICABLE MUST REMAIN WITHIN DIMENSIONS
 SEE CHARTS
 THIS DRAWING CONTAINS INFORMATION THAT IS PROPRIETARY TO MOLEX INCORPORATED AND SHOULD NOT BE USED WITHOUT WRITTEN PERMISSION

	12	11	10	9	8	7	6	5	4	3	2	1
--	----	----	----	---	---	---	---	---	---	---	---	---

13		12		11		10		9		8		7		6		5		4		3		2		1		
E.D.P. NO.	ENG. NO.	CKT. SIZE	MOUNTING OPTION	LOCK OPTION	PLATING (SEE NOTE 2)	MATERIAL (SEE NOTE 1)																				
50-30-4469	5569-04A3S-210	4	SCREW	POSITIVE	TIN/NICKEL	94V-2																				
NO E.D.P.	5569-05A3S-210	5	SCREW	POSITIVE	TIN/NICKEL	94V-2																				
NO E.D.P.	5569-06A3S-210	6	SCREW	POSITIVE	TIN/NICKEL	94V-2																				
NO E.D.P.	5569-07A3S-210	7	SCREW	POSITIVE	TIN/NICKEL	94V-2																				
NO E.D.P.	5569-08A3S-210	8	SCREW	POSITIVE	TIN/NICKEL	94V-2																				
NO E.D.P.	5569-09A3S-210	9	SCREW	POSITIVE	TIN/NICKEL	94V-2																				
NO E.D.P.	5569-10A3S-210	10	SCREW	POSITIVE	TIN/NICKEL	94V-2																				
NO E.D.P.	5569-11A3S-210	11	SCREW	POSITIVE	TIN/NICKEL	94V-2																				
NO E.D.P.	5569-12A3S-210	12	SCREW	POSITIVE	TIN/NICKEL	94V-2																				
NO E.D.P.	5569-04A3GS-210	4	SCREW	POSITIVE	30 GOLD	94V-0																				
NO E.D.P.	5569-05A3GS-210	5	SCREW	POSITIVE	30 GOLD	94V-0																				
NO E.D.P.	5569-06A3GS-210	6	SCREW	POSITIVE	30 GOLD	94V-0																				
NO E.D.P.	5569-07A3GS-210	7	SCREW	POSITIVE	30 GOLD	94V-0																				
NO E.D.P.	5569-08A3GS-210	8	SCREW	POSITIVE	30 GOLD	94V-0																				
NO E.D.P.	5569-09A3GS-210	9	SCREW	POSITIVE	30 GOLD	94V-0																				
NO E.D.P.	5569-10A3GS-210	10	SCREW	POSITIVE	30 GOLD	94V-0																				
NO E.D.P.	5569-11A3GS-210	11	SCREW	POSITIVE	30 GOLD	94V-0																				
NO E.D.P.	5569-12A3GS-210	12	SCREW	POSITIVE	30 GOLD	94V-0																				
NO E.D.P.	5569-04A5GS2	4	PEG	PASSIVE	15 GOLD	94V-2																				
26-01-3095	5569-05A5GS2	5	PEG	PASSIVE	15 GOLD	94V-2																				
NO E.D.P.	5569-06A5GS2	6	PEG	PASSIVE	15 GOLD	94V-2																				
NO E.D.P.	5569-07A5GS2	7	PEG	PASSIVE	15 GOLD	94V-2																				
NO E.D.P.	5569-08A5GS2	8	PEG	PASSIVE	15 GOLD	94V-2																				
NO E.D.P.	5569-09A5GS2	9	PEG	PASSIVE	15 GOLD	94V-2																				
NO E.D.P.	5569-10A5GS2	10	PEG	PASSIVE	15 GOLD	94V-2																				
NO E.D.P.	5569-11A5GS2	11	PEG	PASSIVE	15 GOLD	94V-2																				
NO E.D.P.	5569-12A5GS2	12	PEG	PASSIVE	15 GOLD	94V-2																				

SEE SHEET 1 EC NO. IEP2011-2342 DRWNG: JAGUILAR 2011/02/04 CHKD: J.BELL 2011/02/04 APPR: F.SMITH 2011/02/11 P6	QUALITY SYMBOLS 	GENERAL TOLERANCES (UNLESS SPECIFIED) mm INCH 4 PLACES ±.005 ±.005 3 PLACES ±.005 ±.015 2 PLACES ±.005 ±.030 1 PLACE ±.005 ±.030 ANGULAR ± 3°		DIMENSION STYLE IN/MM DRAWN BY DATE KSS 2/14/89 CHECKED BY DATE RJF 2/14/89 APPROVED BY DATE RAS 2/14/89		SCALE METRIC	DESIGN UNITS METRIC	THIRD ANGLE PROJECTION	TITLE RIGHT ANGLE HEADER ASSY (SINGLE ROW) (MINI-FIT JR. SERIES)	MOLEX INCORPORATED	MATERIAL NO. SDA-5569-NL*	DOCUMENT NO.	SHEET NO. 4 OF 4
		DRAFT WHERE APPLICABLE MUST REMAIN WITHIN DIMENSIONS		SEE TABLES		THIS DRAWING CONTAINS INFORMATION THAT IS PROPRIETARY TO MOLEX INCORPORATED AND SHOULD NOT BE USED WITHOUT WRITTEN PERMISSION							