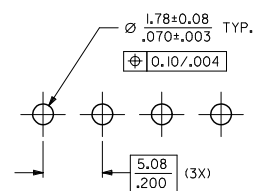
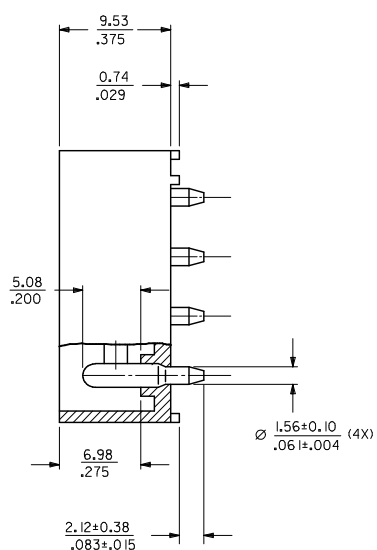
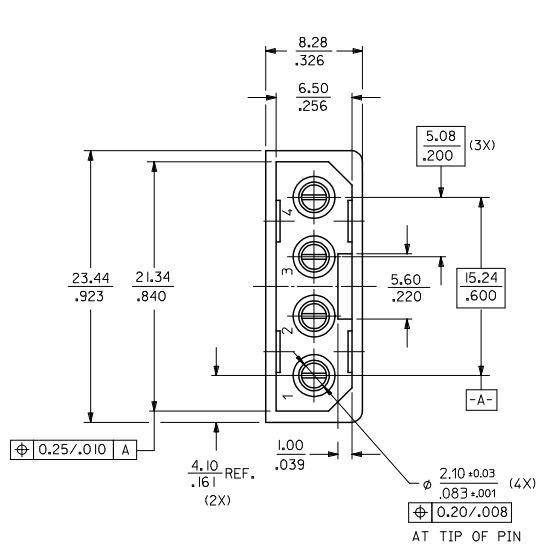


MAT'L NO.	ENG NO.
15-24-4557	A-8981-4V4-LF



RECOMMENDED PCB HOLE LAYOUT

NOTES :

1. PLATING
POSTPLATE 0.00254/.000100 MIN. TIN
OVER 0.00127/.000050 MIN. NICKEL OVERALL.
2. PART TO MATE WITH HOUSING 8981-4P2
AND TERMINAL 8980-3*.
3. PRODUCT SPEC PS-8981-4V4/4R1-P APPLIES.
4. MATERIAL:
HOUSING - PCT, GLASS FILLED, UL94V-0
COLOR BLACK
TERMINAL - PHOS BRONZE

ADD CKT INDICATION EIC NO: S2009-0836 DRAWNSKANG 2009/05/08 CHYKATSEE 2009/05/08 APPR:MLONG 2009/05/11 D1	QUALITY SYMBOLS 	GENERAL TOLERANCES (UNLESS SPECIFIED)		DIMENSION STYLE MM/IN	SCALE NTS	DESIGN UNITS METRIC	THIRD ANGLE PROJECTION
		4 PLACES ± --- ± --- 3 PLACES ± --- ± .008 2 PLACES ± 0.20 ± --- 1 PLACE ± --- ± ---	DRAWN BY SKTOH CHECKED BY GWANG APPROVED BY RWONG	DATE 1991/03/25 DATE 1991/03/28 DATE 1991/03/28	TITLE POWER CONNECTOR, 4 CKTS VERTICAL MOUNT		
		ANGULAR ± 3°	MATERIAL NO. SEE TABLE	DOCUMENT NO. SD-8981-4V4	MOLEX INCORPORATED		
		DRAFT WHERE APPLICABLE MUST REMAIN WITHIN DIMENSIONS	SIZE A 3	SHEET NO. 1 OF 1	THIS DRAWING CONTAINS INFORMATION THAT IS PROPRIETARY TO MOLEX INCORPORATED AND SHOULD NOT BE USED WITHOUT WRITTEN PERMISSION		