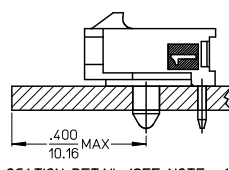
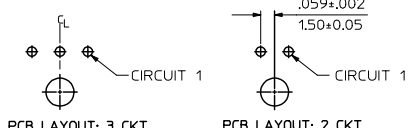
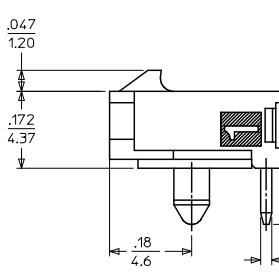
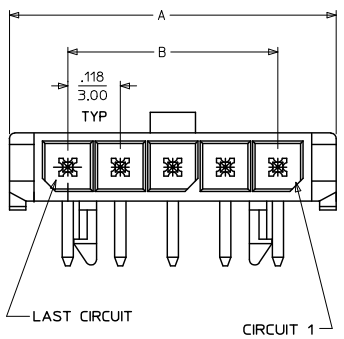
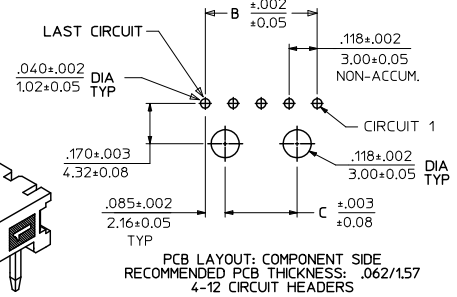
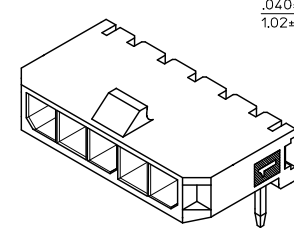
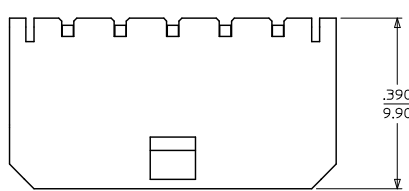
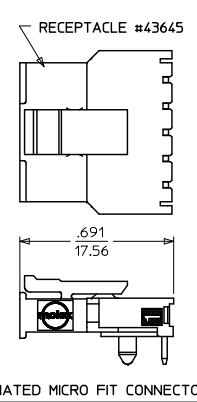


13 12 11 10 9 8 7 6 5 4 3 2 1



| CKTS | A              | B              | C              |
|------|----------------|----------------|----------------|
| 2    | .380<br>9.65   | .118<br>3.00   | NA             |
| 3    | .498<br>12.65  | .236<br>6.00   | NA             |
| 4    | .616<br>15.65  | .354<br>9.00   | .185<br>4.70   |
| 5    | .734<br>18.64  | .472<br>12.00  | .303<br>7.70   |
| 6    | .852<br>21.64  | .591<br>15.00  | .421<br>10.70  |
| 7    | .970<br>24.64  | .709<br>18.00  | .539<br>13.70  |
| 8    | 1.088<br>27.64 | .827<br>21.00  | .657<br>16.70  |
| 9    | 1.206<br>30.63 | .945<br>24.00  | .776<br>19.70  |
| 10   | 1.325<br>33.66 | 1.063<br>27.00 | .894<br>22.70  |
| 11   | 1.443<br>36.65 | 1.181<br>30.00 | 1.012<br>25.70 |
| 12   | 1.561<br>39.65 | 1.299<br>33.00 | 1.130<br>28.70 |



- NOTES:**
- HOUSING MATERIAL: LIQUID CRYSTAL POLYMER, GLASS FILLED, UL94V-0, COLOR - BLACK  
TERMINAL MATERIAL: BRASS ALLOY
  - FINISH:  
A = .000100/(0.00254) MIN, BRIGHT TIN OVER  
.000050/(0.00127) MIN, NICKEL  
B = .00015/(0.0038) MIN, SELECT GOLD IN CONTACT AREA  
.000100/(0.00254) MIN, SELECT MATTE TIN ON SOLDER TAILS  
BOTH OVER .000050/(0.00127) NICKEL OVERALL  
C = .000030/(0.00076) MIN, SELECT GOLD IN CONTACT AREA  
.000100/(0.00254) MIN, SELECT MATTE TIN ON SOLDER TAILS  
BOTH OVER .000050/(0.00127) NICKEL OVERALL  
D = .000100/(0.00254) MIN, MATTE TIN OVER  
.000050/(0.00127) MIN, NICKEL
  - PRODUCT SPECIFICATION: PS-43650
  - TRAY PACKAGED : SEE MOLEX DRAWING PK-70873-0321
  - MATES WITH MICRO FIT (3.0) RECEPTACLE SERIES 43645
  - TO AVOID INTERFERENCE BETWEEN RECEPTACLE AND PCB, HEADER MUST BE PLACED WITHIN .400(10.16) MAX. FROM EDGE OF PCB, AS SHOWN IN LOCATION DETAIL.
  - PARTS CONFORM TO CLASS 'B' REQUIREMENTS OF COSMETIC SPECIFICATION PS-45499-002.

|      | FINISH A     | FINISH B     | FINISH C     | FINISH D     |
|------|--------------|--------------|--------------|--------------|
| CKTS | MATERIAL NO: | MATERIAL NO: | MATERIAL NO: | MATERIAL NO: |
| 02   | 43650-0200   | 43650-0201   | 43650-0202   | 43650-0237   |
| 03   | 43650-0300   | 43650-0301   | 43650-0302   |              |
| 04   | 43650-0400   | 43650-0401   | 43650-0402   |              |
| 05   | 43650-0500   | 43650-0501   | 43650-0502   |              |
| 06   | 43650-0600   | 43650-0601   | 43650-0602   |              |
| 07   | 43650-0700   | 43650-0701   | 43650-0702   |              |
| 08   | 43650-0800   | 43650-0801   | 43650-0802   |              |
| 09   | 43650-0900   | 43650-0901   | 43650-0902   |              |
| 10   | 43650-1000   | 43650-1001   | 43650-1002   |              |
| 11   | 43650-1100   | 43650-1101   | 43650-1102   |              |
| 12   | 43650-1200   | 43650-1201   | 43650-1202   |              |

|  |                               |   |  |   |  |  |  |   |  |
|--|-------------------------------|---|--|---|--|--|--|---|--|
| ADD MATTE FINISH<br>EC NO: UCP2009-3156<br>2009/07/01<br>DRWNS:SSUSEK<br>2009/07/02<br>CHKCHK:PPER<br>2009/07/02<br>APPR:SMITH | QUALITY SYMBOLS<br>▽=0<br>▽=0 | GENERAL TOLERANCES (UNLESS SPECIFIED):<br>mm INCH<br>4 PLACES ±--- ±---<br>3 PLACES ±--- ±.010<br>2 PLACES ±0.25 ±.014<br>1 PLACE ±0.35 ±---<br>ANGULAR ±1/2° |  | DIMENSION STYLE IN/MM<br>DRAWN BY DATE<br>SAMIEC 2000/07/07<br>CHECKED BY DATE<br>MUELLER 2000/07/07<br>APPROVED BY DATE<br>EDGLEY 2000/07/07 |  | SCALE ---<br>DESIGN UNITS METRIC<br>THIRD ANGLE PROJECTION |  |   |  |
|  |                               | DRAFT WHERE APPLICABLE SEE CHART<br>MUST REMAIN WITHIN DIMENSIONS   |  |   |  |  |  | MATERIAL NO. SD-43650-001<br>DOCUMENT NO. |  |
|  |                               | TITLE MICRO-FIT (3.0)<br>SINGLE ROW / RIGHT ANGLE THRU HOLE / PEGS / TRAY<br>MOLEX INCORPORATED   |  |   |  |  |  | SHEET NO. 1 OF 1                          |  |
|  |                               | THIS DRAWING CONTAINS INFORMATION THAT IS PROPRIETARY TO MOLEX INCORPORATED AND SHOULD NOT BE USED WITHOUT WRITTEN PERMISSION                                 |  |   |  |  |  | SIZE C                                    |  |

12 11 10 9 8 7 6 5 4 3 2 1