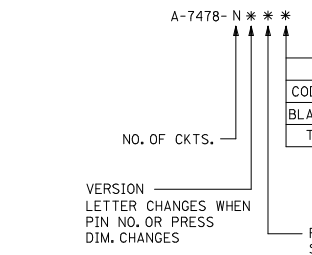
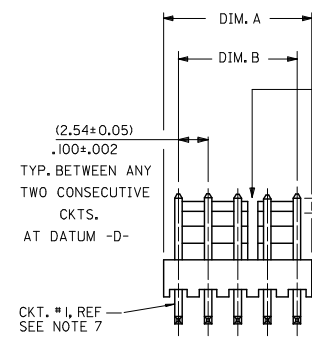
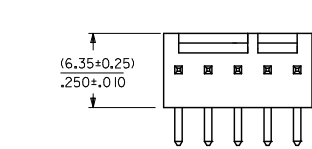
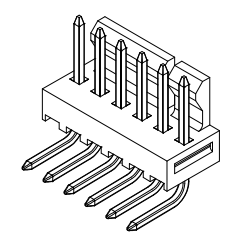
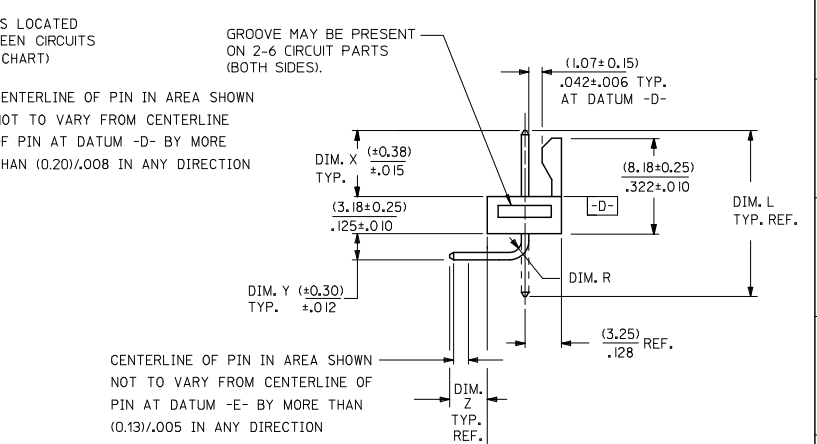


	13	12	11	10	9	8	7	6	5	4	3	2	1
J	28	( 71.12 / 70.61 ) 2.800 / 2.780	( 68.58 ± 0.25 ) 2.700 ± .010	4 , 5 24 , 25									
	27	( 68.58 / 68.07 ) 2.700 / 2.680	( 66.04 ± 0.25 ) 2.600 ± .010	4 , 5 24 , 25									
I	26	( 66.04 / 65.53 ) 2.600 / 2.580	( 63.50 ± 0.25 ) 2.500 ± .010	4 , 5 20 , 21									
	25	( 63.50 / 62.99 ) 2.500 / 2.480	( 60.96 ± 0.25 ) 2.400 ± .010	4 , 5 20 , 21									
H	24	( 60.96 / 60.45 ) 2.400 / 2.380	( 58.42 ± 0.25 ) 2.300 ± .010	4 , 5 20 , 21									
	23	( 58.42 / 57.96 ) 2.300 / 2.282	( 55.88 ± 0.23 ) 2.200 ± .009	4 , 5 20 , 21									
	22	( 55.88 / 55.42 ) 2.200 / 2.182	( 53.34 ± 0.23 ) 2.100 ± .009	4 , 5 16 , 17									
G	21	( 53.34 / 52.88 ) 2.100 / 2.082	( 50.80 ± 0.23 ) 2.000 ± .009	4 , 5 16 , 17									
	20	( 50.80 / 50.34 ) 2.000 / 1.982	( 48.26 ± 0.23 ) 1.900 ± .009	4 , 5 16 , 17									
F	19	( 48.26 / 47.80 ) 1.900 / 1.882	( 45.72 ± 0.23 ) 1.800 ± .009	4 , 5 16 , 17									
	18	( 45.72 / 45.31 ) 1.800 / 1.784	( 43.18 ± 0.20 ) 1.700 ± .008	4 , 5 12 , 13									
E	17	( 43.18 / 42.77 ) 1.700 / 1.684	( 40.64 ± 0.20 ) 1.600 ± .008	4 , 5 12 , 13									
	16	( 40.64 / 40.23 ) 1.600 / 1.584	( 38.10 ± 0.20 ) 1.500 ± .008	4 , 5 12 , 13									
D	15	( 38.10 / 37.69 ) 1.500 / 1.484	( 35.56 ± 0.20 ) 1.400 ± .008	4 , 5 12 , 13									
C	14	( 35.56 / 35.20 ) 1.400 / 1.386	( 33.02 ± 0.18 ) 1.300 ± .007	4 , 5 8 , 9									
	13	( 33.02 / 32.66 ) 1.300 / 1.286	( 30.48 ± 0.18 ) 1.200 ± .007	4 , 5 8 , 9									
B	12	( 30.48 / 30.12 ) 1.200 / 1.186	( 27.94 ± 0.18 ) 1.100 ± .007	4 , 5 8 , 9									
A	11	( 27.94 / 27.58 ) 1.100 / 1.086	( 25.40 ± 0.18 ) 1.000 ± .007	4 , 5 8 , 9									
	10	( 25.40 / 25.04 ) 1.000 / .986	( 22.86 ± 0.15 ) .900 ± .006	4 , 5									
	9	( 22.86 / 22.50 ) .900 / .886	( 20.32 ± 0.15 ) .800 ± .006	4 , 5									
	8	( 20.32 / 19.96 ) .800 / .786	( 17.78 ± 0.15 ) .700 ± .006	4 , 5									
	7	( 17.78 / 17.42 ) .700 / .686	( 15.24 ± 0.13 ) .600 ± .005	4 , 5									
	6	( 15.24 / 14.88 ) .600 / .586	( 12.70 ± 0.13 ) .500 ± .005	4 , 5									
	5	( 12.70 / 12.40 ) .500 / .488	( 10.16 ± 0.13 ) .400 ± .005	NONE									
	4	( 10.16 / 9.86 ) .400 / .388	( 7.62 ± 0.13 ) .300 ± .005	NONE									
	3	( 7.62 / 7.32 ) .300 / .288	( 5.08 ± 0.10 ) .200 ± .004	NONE									
	2	( 5.08 / 4.78 ) .200 / .188	( 2.54 ± 0.05 ) .100 ± .002	NONE									
		NO. OF CKTS.	DIM. A	DIM. B	SLOTS LOC.								



NOTES:

- MATERIAL: NYLON, UL94V-0, COLOR: WHITE
- FINISH:
  - (102) - OVERALL TIN: (0.00508)/.000200 MIN., OVERALL COPPER UNDERPLATE: (0.00254)/.000100 MIN.
  - (154) - OVERALL TIN: (0.00254)/.000100 MIN., OVERALL NICKEL UNDERPLATE: (0.00127)/.000050 MIN.
  - (501) - OVERALL GOLD: (0.00051)/.000020 MIN., OVERALL NICKEL UNDERPLATE: (0.00076)/.000030 MIN.
  - (503) - OVERALL GOLD: (0.00076)/.000030 MIN., OVERALL NICKEL UNDERPLATE: (0.00127)/.000050 MIN.
  - (531) - OVERALL GOLD: (0.00038)/.000015 MIN., OVERALL NICKEL UNDERPLATE: (0.00076)/.000030 MIN.
- PARTS CONFORM TO PRODUCT SPECIFICATION PS-10-07.
- PACKAGING INFORMATION: SEE LEGEND.
- PARTS ARE STACKABLE END TO END ON (2.54)/.100 CENTERS.
- PIN PUSH OUT FORCE: 2 LBS. MIN.
- CIRCUIT ONE DESIGNATION IS USED TO DEFINE VOID LOCATION. CIRCUIT ONE MAY OR MAY NOT LINE UP WITH CIRCUIT ONE ON THE MATING HOUSING.
- THIS PART CONFORMS TO CLASS B REQUIREMENTS OF COSMETIC SPECIFICATION PS-45499-002.



RECOMMENDED P.C. BOARD HOLE LAYOUT

SCALE	4:1
DESIGN UNITS	INCH
THIRD ANGLE PROJECTION	

ADD GROOVE	EC NO. UCP2009-0785	2008/12/29	2009/01/30	2009/01/30
DRAWN BY	DRWN:KIPPER	CHKD:SSUSEK	APPR:SMITH	
QUALITY SYMBOLS	▽=0	▽=0		
GENERAL TOLERANCES (UNLESS SPECIFIED)	mm	INCH		
4 PLACES	±.005	±.0005		
3 PLACES	±.010	±.0010		
2 PLACES	±.025	±.0025		
1 PLACE	±.038	±.0038		
ANGULAR	±1/2°			
DRAFT WHERE APPLICABLE MUST REMAIN WITHIN DIMENSIONS				
DIMENSION STYLE	MM/IN			
DRAWN BY	GUZIC	DATE	1987/07/30	TITLE
CHECKED BY	PATEL	DATE	1987/07/30	FRICITION LOCK HEADER ASY
APPROVED BY	LENZ	DATE	1987/07/30	.100 CL BENT SQ PINS
MATERIAL NO.		DOCUMENT NO.	SDA-7478	7478 SERIES DWG
MOLEX INCORPORATED				
SHEET NO.	1 OF 7			

		13	12	11	10	9	8	7	6	5	4	3	2	1																																																																																						
J	ENG. NO.	PIN NO.	DIM. L	DIM. X	DIM. Z	DIM. Y	DIM. W	DIM. R	ENG. NO.	PIN NO.	DIM. L	DIM. X	DIM. Z	DIM. Y	DIM. W	DIM. T																																																																																				
	A-7478-NA I02	2766-4 (I02)	(18.69) .736	(6.60) .260	(3.58) .141	(3.05) .120	90°	(1.17) .046																																																																																												
	A-7478-NA50I	2766-4 (K50 I)	(18.69) .736	(6.60) .260	(3.58) .141	(3.05) .120	90°	(1.17) .046																																																																																												
I	A-7478-NA50IT	2766-4 (K50 I)	(18.69) .736	(6.60) .260	(3.58) .141	(3.05) .120	90°	(1.17) .046																																																																																												
	A-7478-NA I02T	2766-4 (I02)	(18.69) .736	(6.60) .260	(3.58) .141	(3.05) .120	90°	(1.17) .046																																																																																												
H																																																																																																				
G																																																																																																				
F																																																																																																				
E																																																																																																				
D																																																																																																				
C																																																																																																				
B	<table border="1"> <tr> <td rowspan="2">           ADD A-7478-NA I02T            SEC NO: UCP2006-1815            2006/02/06            DRW: WADERR            UFK: BELHAG            APPR: SMITH            2006/02/09         </td> <td>QUALITY SYMBOLS</td> <td colspan="2">GENERAL TOLERANCES (UNLESS SPECIFIED)</td> <td colspan="2">DIMENSION STYLE</td> <td>SCALE</td> <td>DESIGN UNITS</td> <td>THIRD ANGLE PROJECTION</td> </tr> <tr> <td>           ▽=0            ▽=0         </td> <td>mm</td> <td>INCH</td> <td colspan="2">IN/MM</td> <td>---</td> <td>INCH</td> <td>☉</td> </tr> <tr> <td rowspan="4">           REV            Y9         </td> <td>4 PLACES</td> <td>±---</td> <td>±---</td> <td>DRAWN BY</td> <td>DATE</td> <td colspan="3">TITLE</td> </tr> <tr> <td>3 PLACES</td> <td>±---</td> <td>±---</td> <td>CHECKED BY</td> <td>DATE</td> <td colspan="3">FRICITION LOCK HEADER ASY</td> </tr> <tr> <td>2 PLACES</td> <td>±---</td> <td>±---</td> <td>PATEL</td> <td>1987/07/10</td> <td colspan="3">.100 CL BENT SQ PINS</td> </tr> <tr> <td>1 PLACE</td> <td>±---</td> <td>±---</td> <td>APPROVED BY</td> <td>DATE</td> <td colspan="3">7478 SERIES DWG</td> </tr> <tr> <td></td> <td>ANGULAR</td> <td>±---</td> <td>±---</td> <td>LENZ</td> <td>1987/07/10</td> <td colspan="3">MOLEX INCORPORATED</td> </tr> <tr> <td></td> <td colspan="2">DRAFT WHERE APPLICABLE MUST REMAIN WITHIN DIMENSIONS</td> <td colspan="2">MATERIAL NO.</td> <td>SEE CHART</td> <td>DOCUMENT NO.</td> <td colspan="2">SHEET NO.</td> </tr> <tr> <td></td> <td colspan="2"></td> <td colspan="2"></td> <td>C</td> <td>SDA-7478</td> <td colspan="2">2 OF 7</td> </tr> <tr> <td></td> <td colspan="8">THIS DRAWING CONTAINS INFORMATION THAT IS PROPRIETARY TO MOLEX INCORPORATED AND SHOULD NOT BE USED WITHOUT WRITTEN PERMISSION</td> </tr> </table>							ADD A-7478-NA I02T SEC NO: UCP2006-1815 2006/02/06 DRW: WADERR UFK: BELHAG APPR: SMITH 2006/02/09	QUALITY SYMBOLS	GENERAL TOLERANCES (UNLESS SPECIFIED)		DIMENSION STYLE		SCALE	DESIGN UNITS	THIRD ANGLE PROJECTION	▽=0 ▽=0	mm	INCH	IN/MM		---	INCH	☉	REV Y9	4 PLACES	±---	±---	DRAWN BY	DATE	TITLE			3 PLACES	±---	±---	CHECKED BY	DATE	FRICITION LOCK HEADER ASY			2 PLACES	±---	±---	PATEL	1987/07/10	.100 CL BENT SQ PINS			1 PLACE	±---	±---	APPROVED BY	DATE	7478 SERIES DWG				ANGULAR	±---	±---	LENZ	1987/07/10	MOLEX INCORPORATED				DRAFT WHERE APPLICABLE MUST REMAIN WITHIN DIMENSIONS		MATERIAL NO.		SEE CHART	DOCUMENT NO.	SHEET NO.							C	SDA-7478	2 OF 7			THIS DRAWING CONTAINS INFORMATION THAT IS PROPRIETARY TO MOLEX INCORPORATED AND SHOULD NOT BE USED WITHOUT WRITTEN PERMISSION														
ADD A-7478-NA I02T SEC NO: UCP2006-1815 2006/02/06 DRW: WADERR UFK: BELHAG APPR: SMITH 2006/02/09	QUALITY SYMBOLS	GENERAL TOLERANCES (UNLESS SPECIFIED)		DIMENSION STYLE		SCALE	DESIGN UNITS		THIRD ANGLE PROJECTION																																																																																											
	▽=0 ▽=0	mm	INCH	IN/MM		---	INCH	☉																																																																																												
REV Y9	4 PLACES	±---	±---	DRAWN BY	DATE	TITLE																																																																																														
	3 PLACES	±---	±---	CHECKED BY	DATE	FRICITION LOCK HEADER ASY																																																																																														
	2 PLACES	±---	±---	PATEL	1987/07/10	.100 CL BENT SQ PINS																																																																																														
	1 PLACE	±---	±---	APPROVED BY	DATE	7478 SERIES DWG																																																																																														
	ANGULAR	±---	±---	LENZ	1987/07/10	MOLEX INCORPORATED																																																																																														
	DRAFT WHERE APPLICABLE MUST REMAIN WITHIN DIMENSIONS		MATERIAL NO.		SEE CHART	DOCUMENT NO.	SHEET NO.																																																																																													
					C	SDA-7478	2 OF 7																																																																																													
	THIS DRAWING CONTAINS INFORMATION THAT IS PROPRIETARY TO MOLEX INCORPORATED AND SHOULD NOT BE USED WITHOUT WRITTEN PERMISSION																																																																																																			
A																																																																																																				

tb\_frame\_C\_P\_ME\_T  
Rev. D 2004/04/02

	13	12	11	10	9	8	7	6	5	4	3	2	1		
	A-7478-NA I02		A-7478-NA50 I		A-7478-NA50 IT		A-7478-NA I02 T								
J	PART NO.	ENG. NO.	PART NO.	ENG. NO.	PART NO.	ENG. NO.	PART NO.	ENG. NO.	PART NO.	ENG. NO.	PART NO.	ENG. NO.	PART NO.	ENG. NO.	J
	22-05-3021	A-7478-2A I02	22-12-2024	A-7478-2A50 I	50-29-1710	A-7478-2A50 IT	50-34-8500	A-7478-2A I02 T							
	22-05-3031	A-7478-3A I02	22-12-2034	A-7478-3A50 I	50-29-1711	A-7478-3A50 IT	50-34-8501	A-7478-3A I02 T							
	22-05-3041	A-7478-4A I02	22-12-2044	A-7478-4A50 I	50-29-1705	A-7478-4A50 IT	50-34-8502	A-7478-4A I02 T							
I	22-05-3051	A-7478-5A I02	22-12-2054	A-7478-5A50 I	50-29-1712	A-7478-5A50 IT									
	22-05-3061	A-7478-6A I02	22-12-2064	A-7478-6A50 I	50-29-1713	A-7478-6A50 IT									
	22-05-3071	A-7478-7A I02	22-12-2074	A-7478-7A50 I	50-29-1714	A-7478-7A50 IT									
	22-05-3081	A-7478-8A I02	22-12-2084	A-7478-8A50 I	50-29-1715	A-7478-8A50 IT									
	22-05-3091	A-7478-9A I02	22-12-2094	A-7478-9A50 I	50-29-1716	A-7478-9A50 IT									
H	22-05-3101	A-7478-10A I02	22-12-2104	A-7478-10A50 I	50-29-1717	A-7478-10A50 IT									
	22-05-3111	A-7478-11A I02	22-12-2114	A-7478-11A50 I	50-29-1718	A-7478-11A50 IT									
	22-05-3121	A-7478-12A I02	22-12-2124	A-7478-12A50 I	50-29-1719	A-7478-12A50 IT									
	22-05-3131	A-7478-13A I02	22-12-2134	A-7478-13A50 I	50-29-1720	A-7478-13A50 IT									
	22-05-3141	A-7478-14A I02	22-12-2144	A-7478-14A50 I	50-29-1721	A-7478-14A50 IT									
G	22-05-3151	A-7478-15A I02	22-12-2154	A-7478-15A50 I	50-29-1722	A-7478-15A50 IT									
	22-05-3161	A-7478-16A I02	22-12-2164	A-7478-16A50 I	50-29-1723	A-7478-16A50 IT									
	22-05-3171	A-7478-17A I02	22-12-2174	A-7478-17A50 I	50-29-1724	A-7478-17A50 IT									
	22-05-3181	A-7478-18A I02	22-12-2184	A-7478-18A50 I	50-29-1725	A-7478-18A50 IT									
	22-05-3191	A-7478-19A I02	22-12-2194	A-7478-19A50 I	50-29-1726	A-7478-19A50 IT									
F	22-05-3201	A-7478-20A I02	22-12-2204	A-7478-20A50 I	50-29-1727	A-7478-20A50 IT									
	22-05-3211	A-7478-21A I02	22-12-2214	A-7478-21A50 I	50-29-1728	A-7478-21A50 IT									
	22-05-3221	A-7478-22A I02	22-12-2224	A-7478-22A50 I	50-29-1729	A-7478-22A50 IT									
	22-05-3231	A-7478-23A I02	22-12-2234	A-7478-23A50 I	50-29-1730	A-7478-23A50 IT									
	22-05-3241	A-7478-24A I02	22-12-2244	A-7478-24A50 I	50-29-1731	A-7478-24A50 IT									
	22-05-3251	A-7478-25A I02	22-12-2254	A-7478-25A50 I	50-29-1732	A-7478-25A50 IT									
	22-05-3261	A-7478-26A I02	22-12-2264	A-7478-26A50 I	50-29-1733	A-7478-26A50 IT									
E	22-05-3271	A-7478-27A I02	22-12-2274	A-7478-27A50 I	50-29-1734	A-7478-27A50 IT									
	22-05-3281	A-7478-28A I02	22-12-2284	A-7478-28A50 I	50-29-1735	A-7478-28A50 IT									
D															
C															
B															
A															

ADD PINS EC NO. UCP2006-1815 2006/02/06 DRW:ADBR 2006/02/06 CHK:BELHAG 2006/02/06 APP:FSMTH 2006/02/09 REV DESCRIPTION	QUALITY SYMBOLS	GENERAL TOLERANCES (UNLESS SPECIFIED)	DIMENSION STYLE	SCALE	DESIGN UNITS	THIRD ANGLE PROJECTION																		
	$\nabla=0$ $\nabla=0$	<table border="1"> <tr> <th></th> <th>mm</th> <th>INCH</th> </tr> <tr> <td>4 PLACES</td> <td>±---</td> <td>±---</td> </tr> <tr> <td>3 PLACES</td> <td>±---</td> <td>±---</td> </tr> <tr> <td>2 PLACES</td> <td>±---</td> <td>±---</td> </tr> <tr> <td>1 PLACE</td> <td>±---</td> <td>±---</td> </tr> <tr> <td>ANGULAR</td> <td>±---°</td> <td></td> </tr> </table>		mm	INCH	4 PLACES	±---	±---	3 PLACES	±---	±---	2 PLACES	±---	±---	1 PLACE	±---	±---	ANGULAR	±---°		IN/MM DRAWN BY SUZIK DATE 1987/07/10 CHECKED BY DATE PATEL 1987/07/10 APPROVED BY LENZ DATE 1987/07/10	---	INCH	
		mm	INCH																					
	4 PLACES	±---	±---																					
3 PLACES	±---	±---																						
2 PLACES	±---	±---																						
1 PLACE	±---	±---																						
ANGULAR	±---°																							
DRAFT WHERE APPLICABLE MUST REMAIN WITHIN DIMENSIONS	SEE CHART SIZE C	TITLE FRICTION LOCK HEADER ASY .100 CL BENT SQ PINS 7478 SERIES DWG. MOLEX INCORPORATED	MATERIAL NO. DOCUMENT NO. SDA-7478	SHEET NO. 3 OF 7	THIS DRAWING CONTAINS INFORMATION THAT IS PROPRIETARY TO MOLEX INCORPORATED AND SHOULD NOT BE USED WITHOUT WRITTEN PERMISSION																			