

REV. NO.		ECO. NO.		DESCRIPTION		DATE		BY	
A	1682			INITIAL RELEASE			5/8/2008		VJ
B	1852			UPDATE DIM 'C', TABLE, NOTE 3 & TOLERANCE BLOCK			11/12/08		JH

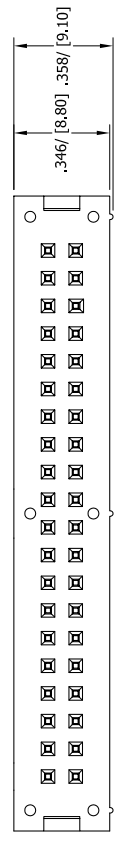
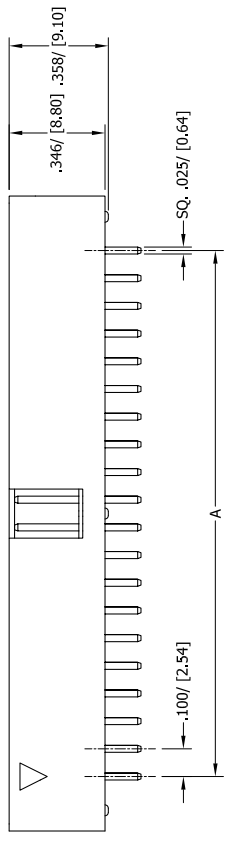
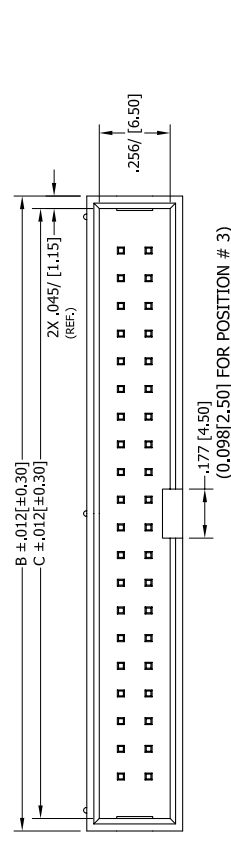
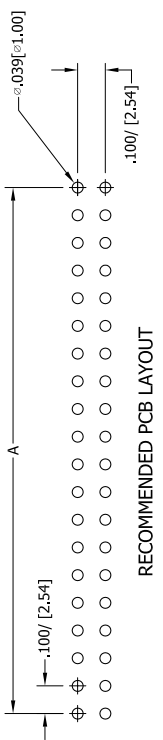
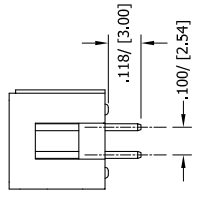
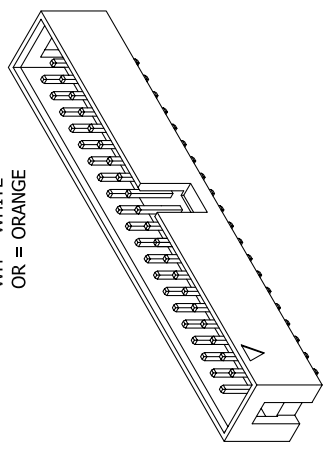
PART NUMBER CODING

SBH11 - PBPC - D - - ST - -

NUMBER OF POSITIONS
(CONTACTS PER ROW)

TERMINATION
STRAIGHT

COLOR
BK = BLACK
YE = YELLOW
RE = RED
BL = BLUE
GR = GREEN
GY = GREY
WH = WHITE
OR = ORANGE



PART NUMBER	POSITIONS/ CONTACTS		A		B		C	
	INCH	MM	INCH	MM	INCH	MM	INCH	MM
SBH11-PBPC-D03-ST	0.306	7.82	0.508	12.90	0.595	15.12	0.505	12.82
SBH11-PBPC-D04-ST	0.408	10.41	0.695	17.66	0.605	15.36	0.505	12.82
SBH11-PBPC-D05-ST	0.510	12.95	0.882	22.45	0.705	17.90	0.505	12.82
SBH11-PBPC-D06-ST	0.612	15.50	1.069	27.17	0.885	22.52	0.505	12.82
SBH11-PBPC-D07-ST	0.714	18.05	1.256	31.89	0.995	25.28	0.505	12.82
SBH11-PBPC-D08-ST	0.816	20.60	1.443	36.61	1.095	27.82	1.005	25.52
SBH11-PBPC-D10-ST	1.020	25.91	1.830	46.34	1.295	32.90	1.205	30.60
SBH11-PBPC-D12-ST	1.224	31.22	2.217	56.07	1.495	37.98	1.405	35.68
SBH11-PBPC-D13-ST	1.326	33.77	2.404	61.00	1.595	40.52	1.505	38.22
SBH11-PBPC-D15-ST	1.530	38.89	2.791	70.73	1.795	45.60	1.705	43.30
SBH11-PBPC-D17-ST	1.734	43.99	3.178	80.46	1.995	50.68	1.905	48.38
SBH11-PBPC-D20-ST	2.040	51.81	3.565	90.19	2.295	58.30	2.205	56.00
SBH11-PBPC-D22-ST	2.244	57.12	3.952	100.00	2.495	63.38	2.405	61.08
SBH11-PBPC-D25-ST	2.550	64.57	4.339	110.00	2.795	71.00	2.705	68.70
SBH11-PBPC-D30-ST	3.060	77.70	5.334	135.50	3.295	83.70	3.205	81.40
SBH11-PBPC-D32-ST	3.264	83.40	5.721	145.23	3.495	88.78	3.405	86.48

UNLESS OTHERWISE SPECIFIED:
DIMENSIONS ARE IN INCHES (MM)

TOLERANCES:
XXX = ±.005 (0.127)
XX = ±.002 (0.051)
X = ±.001 (0.025)
XXX = ±.004 (0.102)
XX = ±.001 (0.025)
X = ±.0005 (0.013)

INTERPRET DIMENSIONS AND GEOMETRIC TOLERANCES PER: ANSI Y14.5-1984

RoHS COMPLIANT

DATE: 5/8/2008
DRAWN: V. JARA

THE INFORMATION HEREON CONTAINS TRADE SECRETS AND PROPRIETARY INFORMATION OF SULLINS ELECTRONICS AND IS NOT TO BE DISCLOSED TO OTHERS FOR ANY PURPOSE EXCEPT AS SPECIFICALLY AUTHORIZED BY SULLINS ELECTRONICS, OFFICE OF SULLINS ELECTRONICS.

DESCRIPTION: BOX HEADER, 100(2.54) CCRS

PART NUMBER: SBH11-PBPC-D- -ST- -

SIZE (DWG. NO.): C 11091

SCALE: NONE

SULLINS CONNECTOR SOLUTIONS

- NOTES:
- INSULATOR MATERIAL: PBT.
 - CONTACT MATERIAL: BRASS.
 - PLATING: GOLD FLASH OVERALL.
 - OPERATING TEMPERATURE: -40°C ~ 85°C.
 - PROCESSING TEMP: 230°C FOR 60 SECONDS MAX. (260°C, 10 SEC.)
 - UL FLAMMABILITY RATING: 94V-0.
 - VOLTAGE RATING: 20m OHMS MAX.
 - CURRENT RATING: 3 AMP PER CONTACT.
 - VOLTAGE DROP: AC 500 V.
 - INSULATION RESISTANCE: 1000 MEGA OHMS.