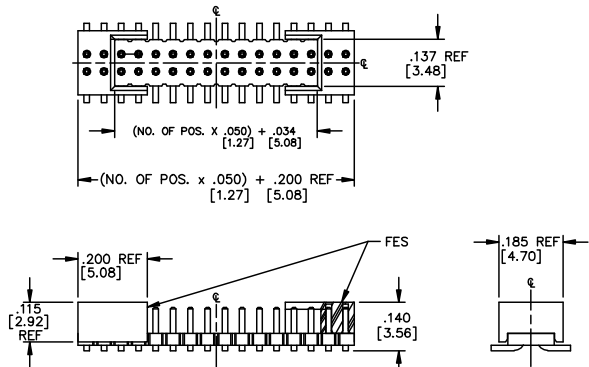


REV. BH

FIG. 3

(DIFFERENT AS SHOWN, OTHERWISE SAME AS FIG. 1)  
(SEE NOTES 6 & 7)

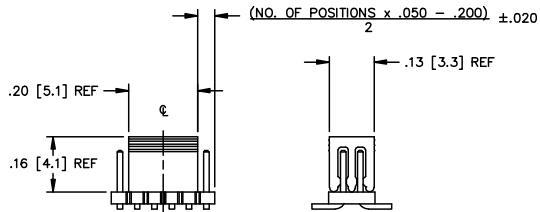


-DV-S OPTION

\* NOTE: 4 POSITIONS MUST BE ADDED TO PART CALLOUT TO ACHIEVE DIM'S.  
(NOT AVAILABLE WITH -A OPTION; ORDER -SA FOR ALIGNMENT PIN AND SHROUD)

FIG. 5

(DIFFERENT AS SHOWN, OTHERWISE SAME AS FIG. 1)



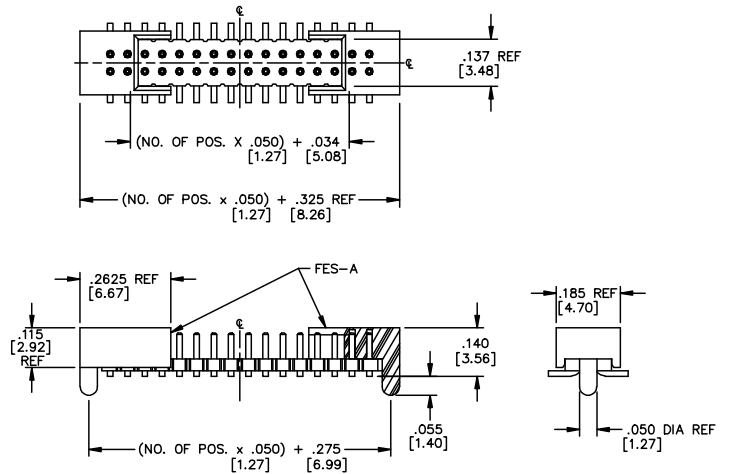
-DV-P OPTION

**PROPRIETARY NOTE**  
THIS DRAWING CONTAINS PROPRIETARY INFORMATION AND IS THE PROPERTY OF SAMTEC INC. IT IS TO BE USED ONLY FOR THE PURPOSES SPECIFIED IN THE ORDER. IT IS NOT TO BE REPRODUCED, COPIED, OR TRANSMITTED IN ANY FORM OR BY ANY MEANS, ELECTRONIC OR MECHANICAL, INCLUDING PHOTOCOPYING, RECORDING, OR BY ANY INFORMATION STORAGE AND RETRIEVAL SYSTEM, WITHOUT THE WRITTEN CONSENT OF SAMTEC INC.

DIMENSIONS ARE IN INCHES		UNLESS OTHERWISE NOTED		TOLERANCES ARE:		TITLE:	DWG NO:
ONE PLACE DECIMALS ±.1[2.5]	THREE PLACE DECIMALS ±.005[.13]	ANGLES	± 2°			.050 x .050 C.L. LOW PROFILE TERMINAL STRIP ASSEMBLY	FTS-1XX-XX-XX-XX-XX
TWO PLACE DECIMALS ±.01[.25]	FOUR PLACE DECIMALS ±.0020[.051]						SHEET 2 OF 4

FIG. 4

(DIFFERENT AS SHOWN, OTHERWISE SAME AS FIG. 1)  
(SEE NOTES 6 & 7)



-DV-SA OPTION

\* NOTE: 4 POSITIONS MUST BE ADDED TO PART CALLOUT TO ACHIEVE DIM'S.

DO NOT SCALE FROM THIS PRINT

PLOT SCALE: 1 = .2

**samtec**

520 PARK EAST BLVD. NEW ALBANY, INDIANA 47150  
PHONE (812) 944-8733 P.O. BOX 1147  
CODE 55322

MADE BY: BRATCHER 05-03-95

FTS-1XX-XX-XX-XX-XX  
SHEET 2 OF 4