

PRODUCT NUMBER
10075025-X01-XXXLF

PLATING

S = 0.38µm GOLD/GXT ON CONTACT AREA
2µm MIN MATTE TIN ON TAIL
OVER 1.27µm MIN NICKEL

G = 0.76µm GOLD/GXT ON CONTACT AREA
2µm MIN MATTE TIN ON TAIL
OVER 1.27µm MIN NICKEL

F = GOLD FLASH ON CONTACT AREA
2µm MIN MATTE TIN ON TAIL
OVER 1.27µm MIN NICKEL

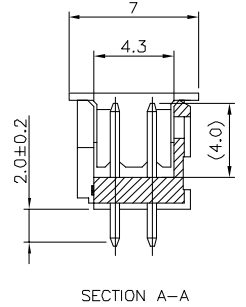
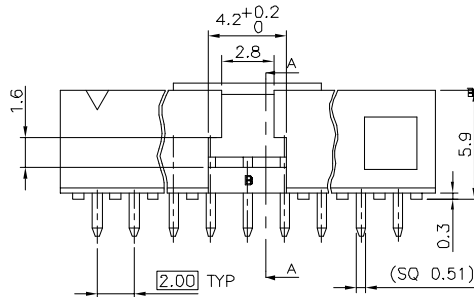
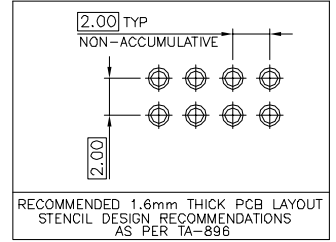
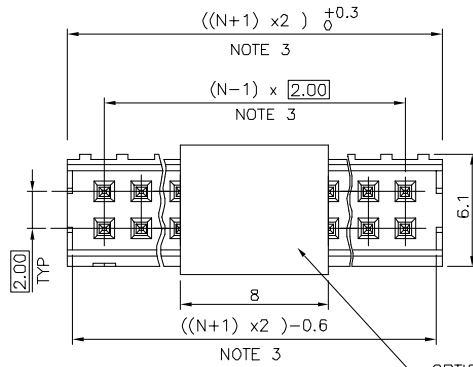
LEAD FREE
RoHS COMPATIBLE
NOTE 6

PACKAGING
NOTE 5

TOTAL NUMBER OF
POSITIONS, 04 TO 50

NOTES:

- MATERIAL HOUSING: HIGH TEMP. THERMOPLASTIC
UL 94V-0, COLOR BLACK
- MATERIAL TERMINAL: COPPER ALLOY
- TO DETERMINE DIMENSIONS:
N = NUMBER OF POSITIONS PER ROW
- 7N MIN. PIN RETENTION IN EITHER DIRECTION.
- PACKAGING:
= PLASTIC BOX
U = TUBE AVAILABLE FROM 03 TO 25 PDS PER ROW
A = TAPE & REEL WITH PICK UP CAP INSTALLED
SEE TA-884 FOR PRODUCT AVAILABILITY
- RoHS COMPATIBLE PRODUCT SPECIFICATIONS
 - PLATING:
 - "LF" MEANS THE PRODUCT IS LEAD-FREE,
2µm MINIMUM MATTE TIN OVER 1.27µm
MINIMUM NICKEL UNDERPLATE.
 - MANUFACTURING PROCESS COMPATIBILITY
 - THE HOUSING WILL WITHSTAND EXPOSURE TO
260°C PEAK TEMPERATURE FOR 30 SECONDS MAX
IN A CONVECTION, INFRA-RED, OR VAPOR PHASE
OR REFLOW OVEN
 - LABELLING:
 - MEETS PACKAGING SPECS AS PER GS-14-920
 - LEGAL STATEMENT: SEE GS-22-008



mat'l. code		surface		tolerance		projection		product family	
ISO 1592		ISO 406		ISO 101		mm		MINITEK	
tolerances unless otherwise specified		.X ±0.3		linear .XX ±0.13		scale 1:1		title	
angles .XXX ±0.05		F06-0326 LMU 07.01.04		F07-0129 LMU 07.02.13		F08-0113 LMU 08.01.17		2.00 mm VERTICAL PIP	
D F08-0143 ELA 15.04.08 dr L.MULIN 07.01.04		E F08-0222 LMU 08.09.15 eng J.COMPAGNON 07.01.04		chr appd J.M.C 07.01.04		FCI		dwg no sheet 1 of 2 size	
sheet index		revision sheet		E 1		A 2		10075025 A3	
								type CUSTOMER Drawing	

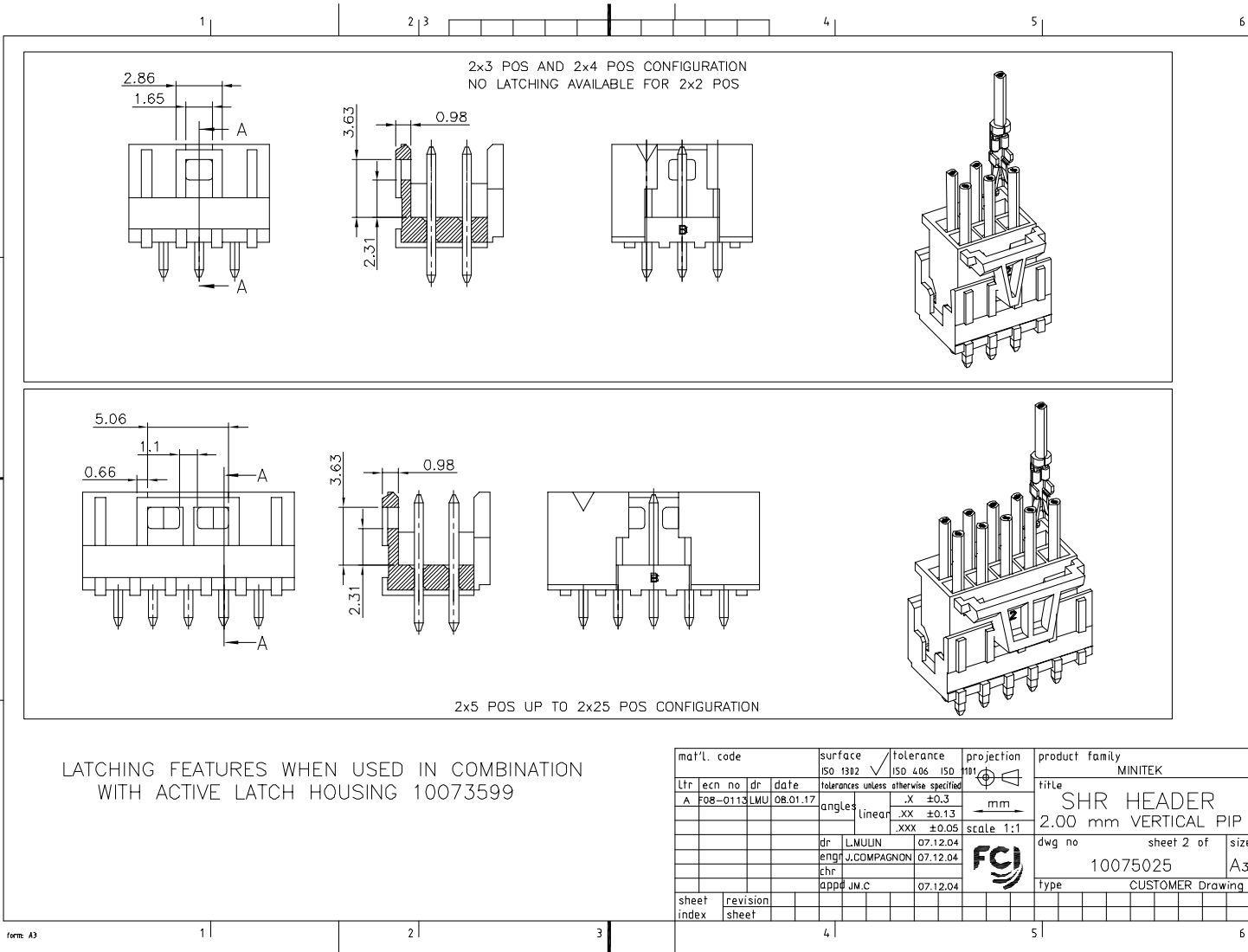
This document is the property of FCI. It is intended for use in the design and production of components. It is not to be used in any way or disclosed to others without the written consent of FCI. Copyright © FCI

FCI CONFIDENTIAL

This document is the property of FCI and contains confidential and proprietary information. It is to be used only for the purposes intended and its use for any other purpose is prohibited. It is to be returned to FCI without delay upon completion of its use. Copyright © FCI.



FCIconnect.com



mat'l. code		surface		tolerance		projection		product family	
ISO 1982		ISO 406		ISO 101		mm		MINITEK	
A F08-0113LMU		08.01.17		tolerances unless otherwise specified		mm		title	
				.X ±0.3		scale 1:1		SHR HEADER	
				.XX ±0.13				2.00 mm VERTICAL PIP	
				.XXX ±0.05				dwg no	
				dr L.MULIN 07.12.04		FCI		sheet 2 of	
				eng J.COMPAGNON 07.12.04				size	
				chr				10075025	
				app J.M.C 07.12.04				A3	
								type	
								CUSTOMER Drawing	
sheet index	revision sheet								