

PRODUCT NUMBER  
71918-YXXLF

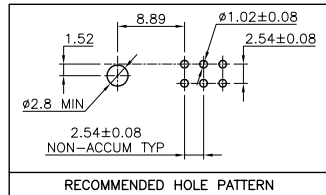
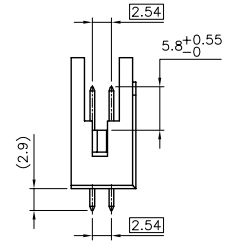
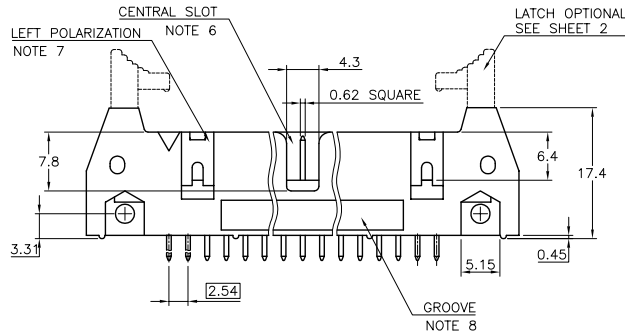
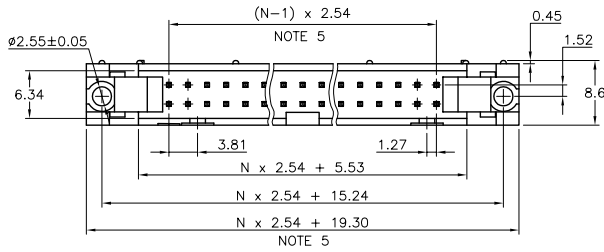
WHEN REQUIRED, ADD SUFFIX LETTER "LF"  
INDICATES THE PRODUCT IS RoHS  
COMPATIBLE, SEE NOTE 10

TOTAL NB OF POSITIONS, SEE SHEET 2

LATCHING  
0= WITHOUT LATCH  
1= STANDARD LATCH  
2= LOW PROFILE LATCH

NOTES:

- 1 - HOUSING MAT'L : GLASS FILLED THERMOPLASTIC. UL94V-0 COLOR: GREY
- 2 - PIN MATERIAL : PHOSPHOR BRONZE
- 3 - PRODUCT PACKAGED IN TUBES
- 4 - 40N MIN LATCH RETENTION FORCE AT FIRST EXTRACTION
- 5 - TO DETERMINE DIMENSIONS :  
N = NUMBER OF POSITIONS PER ROW  
EXAMPLE : 8 POS N x 2.54 = 20.32mm
- 6 - NO CENTRAL SLOT ON POSITIONS 6 & 8
- 7 - NO LEFT POLARIZATION ON POSITIONS 06, 08, 10, 14.
- 8 - NO GROOVE ON POSITIONS 06, 08, 10, 14, 30, 34
- 9 - 4.5mm SOLDER TAIL  
ORDER 71918-4XX (WITH STANDARD LATCH ONLY)
- 10 - RoHS COMPATIBLE PRODUCT SPECIFICATIONS
  - a - PLATING:  
- "LF" MEANS THE PRODUCT IS LEAD-FREE,  
2µm MINIMUM MATTE TIN OVER 1.27µm  
MINIMUM NICKEL UNDERPLATE.
  - b - MANUFACTURING PROCESS COMPATIBILITY  
- THE HOUSING WILL WITHSTAND EXPOSURE TO  
260°C ±5°C SOLDER BATH TEMPERATURE FOR  
5 SECONDS IN A WAVE SOLDER APPLICATION  
WITH A 1.6mm MIN THICK CIRCUIT BOARD.
  - c - LABELING:  
- MEETS PACKAGING SPECS AS PER GS-14-920
  - d - LEGAL STATEMENT: SEE GS-22-008.



mat'l. code		surface		tolerance		projection		product family	
SEE NOTES		ISO 1302		ISO 406 ISO 1101		mm		QUICKIE	
ltr	ecm no	dr	date	tolerances unless otherwise specified		mm		title	
R	F04-0198	LMU	04.05.28	angles	linear	.X ±0.3	SHR.EL.HEADER		
S	F04-0389	LMU	04.12.20			.XX ±0.13	STR DR TMT		
T	F06-0229	LMU	06.07.17			.XXX ±0.05	scale 2:1		
U	F07-0195	LMU	07.05.25	dr	D.I.E	01.01.24	dwg no		
V	F08-0146	YOV	08.04.11	engr	J.M.C	01.01.24	sheet 1 of 2		
W	F09-0232	LMU	09.12.15	chr	J.F.N	01.01.24	size		
				app	J.M.C	01.01.24	A3		
sheet index		revision sheet	W	S			type		
		1	2			CUSTOMER Drawing			

CORE RANGE		CATALOGUE RANGE	
LATCHING	NUMBER OF POSITIONS	LATCHING	NUMBER OF POSITIONS
1	06	0/2	06
1	08	0/2	08
1	10	0/2	10
1	14	0/2	14
1	16	0/2	16
1	18	0/2	18
1	20	0/2	20
1	26	0/2	26
1	30	0/2	30
1	34	0/2	34
1	40	0/2	40
1	44	0/2	44
1	50	0/2	50
1	60	0/2	60
1	64	0/2	64

<b>PLATING :</b> - 0.76µm GOLD/GXT (PdNi WITH GOLD FLASH) ON CONTACT AREA 3.81µm TIN-LEAD ON TAIL UNDERPLATE : 1.27µm Ni MIN  - WHEN SUFFIX LETTER "LF" IS REQUIRED, 2µm MIN MATTE TIN OVER 1.27µm MIN NICKEL IS PROVIDED INSTEAD OF TIN-LEAD	<b>PLATING :</b> - 0.76µm GOLD/GXT (PdNi WITH GOLD FLASH) ON CONTACT AREA 3.81µm TIN-LEAD ON TAIL UNDERPLATE : 1.27µm Ni MIN  - WHEN SUFFIX LETTER "LF" IS REQUIRED, 2µm MIN MATTE TIN OVER 1.27µm MIN NICKEL IS PROVIDED INSTEAD OF TIN-LEAD
---	---

**LATCHING FEATURES :**

1= STANDARD LATCH

2= LOW PROFILE LATCH

mat'l. code		surface	tolerance	projection	product family
Ltr		ISO 1302	ISO 406 ISO 1101	ISO 1101	QUICKIE
R	F07-0195	LMU	07.05.25	tolerances unless otherwise specified	title
S	F08-0146	YQV	08.04.11	angles linear .X ±0.3 .XX ±0.15 .XXX ±0.05	SHR.EL.HEADER
				scale 2:1	STR DR TMT
L	F10309	DLE	01.05.10	dr	DLE
M	F04-0176	LMU	04.04.22	engr	J.M.C
N	F04-0389	LMU	04.12.22	chr	J.F.N
P	F06-0229	LMU	06.07.17	appd	J.M.C
sheet index	revision sheet				type
					CUSTOMER Drawing

Copyright FCJ  
 FCJconnect.com