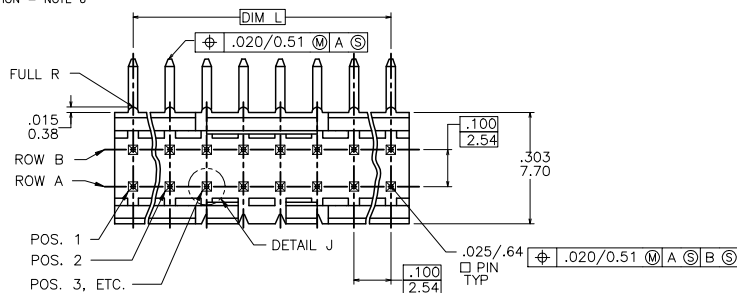
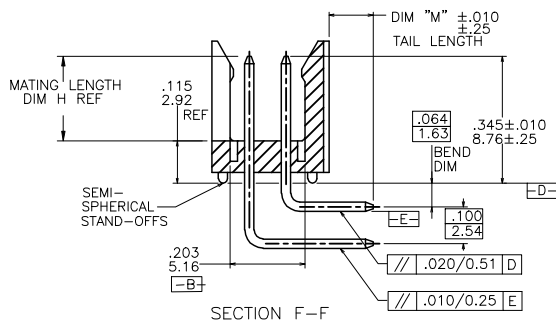
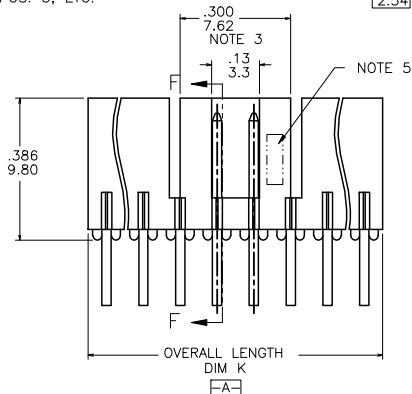


PRODUCT NO.  
78207-XYTZHLF

LEAD FREE OPTION - NOTE 8, 9, 10  
CUSTOMER SPECIALS - NOTE 7  
TUBE PACKAGING OPTION - NOTE 6  
NO. OF POSITIONS  
SEE TABLE  
PIN PLATING  
BASE P/N



NOTE 4  
DETAIL J  
SCALE 4/1



mal't. code				surface	tolerance	projection	product family
ltr	ecr no	dr	date	ISO 1902	ISO 406	ISO 1001	HEADER
l				tolerances unless otherwise specified			
V12717	GIP	11/16/01		linear	XX±.01/XX±.03	INCH/MM	FRICITION LATCH HEADER
V03-0352	GJP	03/25/03		linear	XXX±.005/XXX±.013	scale 3:1	DOUBLE ROW, R/A
N	M05-0134	ERE	06/15/05	0'±2'	XXXX±.0020/XXXX±.005		
P	M06-0256	ERE	09/07/06	dr	S.ROYER	01/21/94	
R	M08-0023	MHT	1/28/08	engr	L.FYE	01/21/94	
S	M08-0291	MHT	10/08/08	chr	L.FYE	01/21/94	
T	M09-0008	MHT	1/19/09	appd	L.FYE	01/21/94	
sheet	revision	T	T				
index	sheet	1	2				

FRICITION LATCH HEADER  
DOUBLE ROW, R/A  
78207  
A3  
type Product Customer Drawing

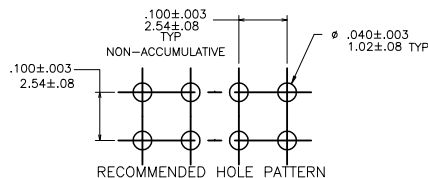
PDM: Rev:T STATUS Released Printed: Oct 20, 2010

PRODUCT NUMBER	NO OF POS	MATING LENGTH DIM H	OVERALL LENGTH DIM K	DIM L	TAIL LENGTH DIM "M"
78207-X06	2 X 3	.230/5.84	.300/7.62	.200/5.08	.120/3.05
-X08	2 X 4	.230/5.84	.400/10.16	.300/7.62	
-X10	2 X 5	.230/5.84	.500/12.70	.400/10.16	
-X12	2 X 6	.230/5.84	.600/15.24	.500/12.70	
-X14	2 X 7	.230/5.84	.700/17.78	.600/15.24	
-X16	2 X 8	.230/5.84	.800/20.32	.700/17.78	
-X18	2 X 9	.230/5.84	.900/22.86	.800/20.32	
-X18A	2 X 9	.210/5.33	.900/22.86	.800/20.32	
-X20	2 X 10	.230/5.84	1.000/25.40	.900/22.86	
-X22	2 X 11	.230/5.84	1.100/27.94	1.000/25.40	
-X24	2 X 12	.230/5.84	1.200/30.48	1.100/27.94	
-X26	2 X 13	.230/5.84	1.300/33.02	1.200/30.48	
-X28	2 X 14	.230/5.84	1.400/35.56	1.300/33.02	
78207-X30	2 X 15	.230/5.84	1.500/38.10	1.400/35.56	.120/3.05
78207-X32	UNAVAILABLE				
THRU					
78207-X72					
78207-X80	2 X 4	.230/5.84	.400/10.16	.300/7.62	.100/2.54

NOTE 7

#### NOTES:

- MOLDING MAT'L: GLASS REINFORCED PCT OR MINERAL FILLED LCP, COLOR: BLACK  
FLAME RETARDANT PER UL 94 V-0  
MAXIMUM OPERATING TEMPERATURE: 130° C.
- PIN MATERIAL: 3/4 HD PHOS. BRZ.
- NO SLOTS ON 2 X 5 POSITION OR SMALLER PRODUCT. THE CENTER KEY SLOT WILL BE ON ALL HEADERS REGARDLESS OF SIZE.
- TWO NON-CRITICAL SIDES OF PIN TIP NOT PLATED, BOTH ENDS.
- COMPANY LOGO MAY APPEAR IN THIS AREA.
- "T" ATTACHED TO THE P/N INDICATES PARTS ARE TO BE PACKAGED IN TUBES.
- CUSTOMER SPECIAL -- "A" SUFFIX INDICATES 0.210/5.33 MATING LENGTH.
- ADD "HLF" SUFFIX AT THE END OF PART NUMBER FOR LEAD FREE OPTION, NOT AVAILABLE FOR -5YY, -5YH, -6YY & -6YH.
- PART NUMBERS WITH "H" SUFFIX WILL WITHSTAND EXPOSURE TO 260°C PEAK TEMPERATURE FOR 20 SECONDS IN WAVE SOLDER, INFRA-RED OR VAPOR PHASE SOLDER PROCESS.
- PART NUMBERS WITHOUT "H" SUFFIX WILL WITHSTAND EXPOSURE TO 260°C PEAK TEMPERATURE FOR WAVE SOLDER PROCESS.
- THIS PRODUCT MEETS EUROPEAN UNION DIRECTIVES AND OTHER COUNTRY REGULATION AS DESCRIBED IN GS-22-008.
- PLATING OPTIONS:  
MAY BE EITHER GOLD OR GXT PLATED AT MANUFACTURER'S OPTION.
- "THIS PRODUCT HAS 100% TIN PLATING IN THE INTERFACE AND HAS NOT BEEN TESTED FOR WHISKER GROWTH IN ALL INTERCONNECT ENVIRONMENTS."



mal'l code		surface ISO 1902		tolerance ISO 406 ISO 1001		projection INCH/MM		product family HEADER	
lfr	ecn no	dr	date	tolerances unless otherwise specified		title		FRICION LATCH HEADER	
T				angles	linear	INCH/MM		DOUBLE ROW, R/A	
				0°±2°	linear	scale 3:1		dwg no	
				dr	S.ROYER	01/21/94	F01		sheet 2 of 2 size
				engr	L.FYE	01/21/94	78207		A3
				chr	L.FYE	01/21/94	type		Product Customer Drawing
				appd	L.FYE	01/21/94			
sheet index	revision	sheet							