

PRODUCT NUMBER

57202-XXX-XXXXXL

PLATING
S = 0.38µm GOLD/GXT ON CONTACT AREA
3.81µm TIN LEAD ON TAIL
G = 0.76µm GOLD/GXT ON CONTACT AREA
3.81µm TIN LEAD ON TAIL
F = GOLD FLASH ON CONTACT AREA
3.81µm TIN LEAD ON TAIL
WHEN "LF" IS REQUIRED, 2µm MIN MATTE TIN OVER 1.27µm MIN NICKEL INSTEAD OF TIN-LEAD

STYLE	POST LENGTH ±0.2
51	2.00
52	4.00
53	3.50

WHEN REQUIRED, ADD SUFFIX LETTER "LF" INDICATES THE PRODUCT IS ROHS COMPATIBLE SEE NOTE 7
POLARIZATION, SEE NOTE 6
PACKAGING, SEE NOTE 5
NB OF POS PER ROW : 02 TO 25

NOTES:

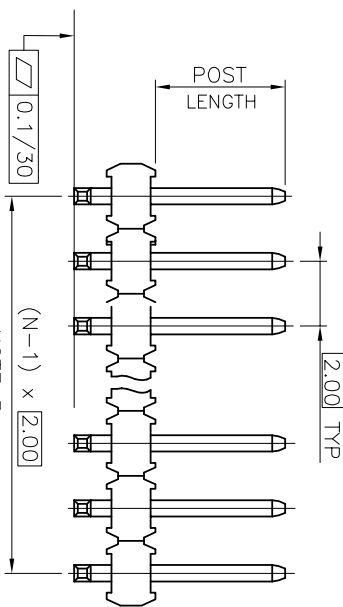
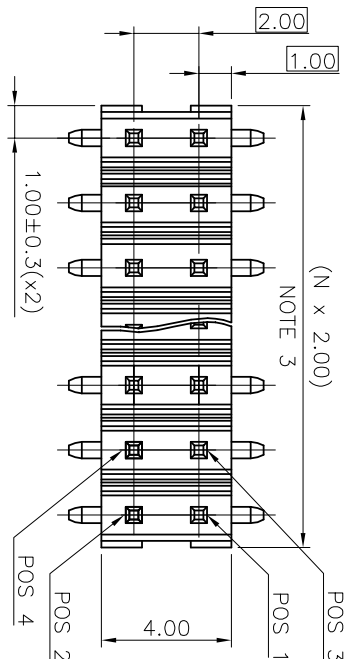
- MATERIAL HOUSING: HIGH TEMP. THERMOPLASTIC UL 94V-0, COLOR BLACK
- MATERIAL TERMINAL: COPPER ALLOY
- TO DETERMINE DIMENSIONS:
N = NUMBER OF POSITIONS PER ROW.
7N MIN. PIN RETENTION IN EITHER DIRECTION.
- PACKAGING:
= PLASTIC BOX.
- PLASTIC BOX WHEN POLARISATION FEATURE APPLICABLE.
U = TUBE AVAILABLE FROM 04 TO 25 POS PER ROW.
A = TAPE AND REEL WITH PICK UP CAP INSTALLED IN THE CENTER OF THE PRODUCT FOR PICK AND PLACE SEE TA 884 FOR PRODUCT AVAILABILITY.
K = TAPE AND REEL WITHOUT CAP, SEE TA884 FOR AVAILABILITY.

- FOR POLARIZATION, SPECIFY POSITION NUMBER TO OMIT PIN.
EXAMPLE : 03 = OMIT PIN POSITION 3, SEE TOP VIEW.
OMIT FROM PRODUCT NUMBER IF THIS FEATURE IS NOT APPLICABLE.

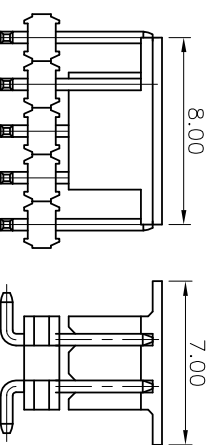
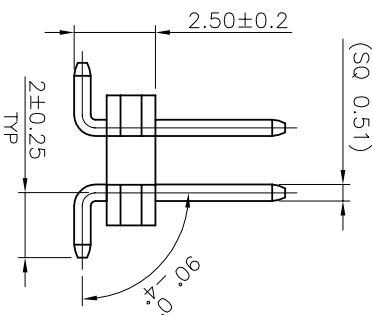
7. ROHS COMPATIBLE PRODUCT SPECIFICATIONS

- PLATING:
- "LF" MEANS THE PRODUCT IS LEAD-FREE, 2µm MINIMUM MATTE TIN OVER 1.27µm MINIMUM NICKEL UNDERPLATE.
- MANUFACTURING PROCESS COMPATIBILITY
- THE HOUSING WILL WITHSTAND EXPOSURE TO 260°C PEAK TEMPERATURE FOR 30 SECONDS IN A CONVECTION, INFRA-RED OR VAPOR PHASE REFLOW OVEN.
- LABELLING:
- MEETS PACKAGING SPECS AS PER GS-14-920
d - LEGAL STATEMENT : SEE GS-22-008

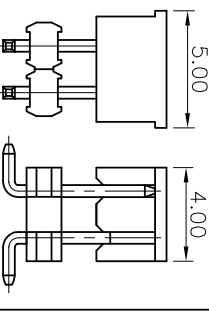
TOP VIEW



NOTE 3



CAP DIMS FOR 2x3 POS UP TO 2x25 POS



CAP DIMS FOR 2x2 POS

mat'l. code	surface	tolerance	projection	product family
LFr ecn no dr date	ISO 1902	ISO 406	ISO 101	MINITEK
L F09-0087 JCO 09.09.04	tolerances unless otherwise specified	.XX ±0.3	mm	
F F04-0378 LMU 04.11.26	linear	.XXX ±0.05	scale 1:1	
G F05-0124 LMU 05.02.07 dr	LMULIN	04.05.06		
H F06-0210 LMU 06.07.04	Engt JCOMPAGNON	0.4.11.25		
J F06-0327 LMU 07.01.03 chr	JM.C	04.11.25		
K F08-0143 ELA 17.04.08	pppd			
sheet	revision			
index	sheet			



UNSH HEADER
2.00 mm VERTICAL SMT

57202
CUSTOMER Drawing

AS