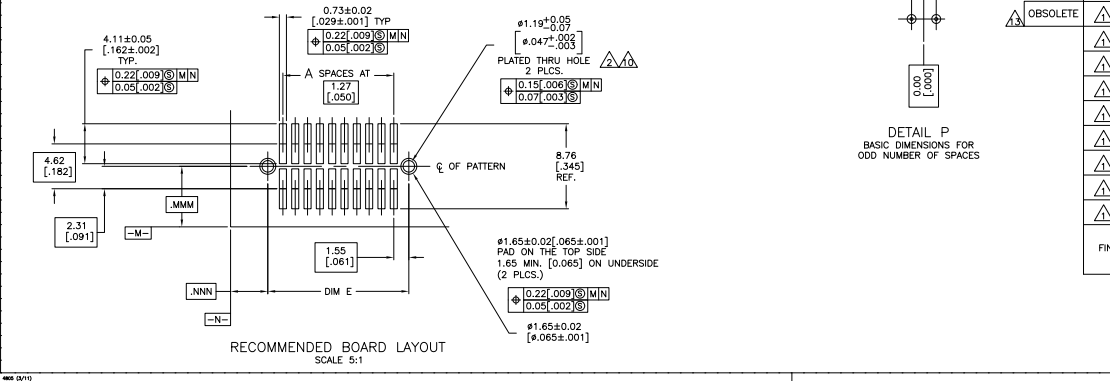
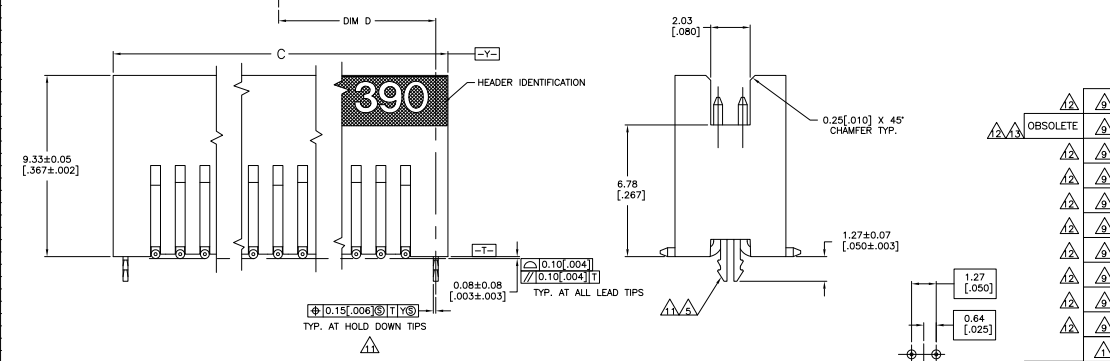
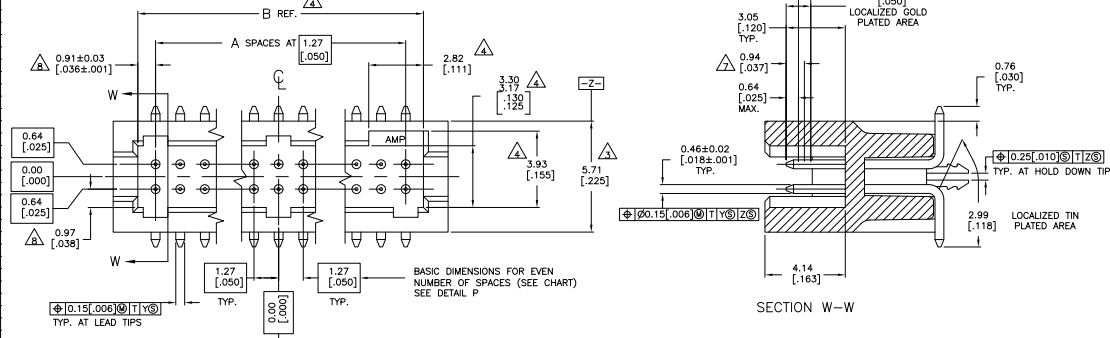


THIS DRAWING IS UNPUBLISHED
 ALL RIGHTS RESERVED

REV	DATE	DESCRIPTION	BY	CHK
AD	00	REVISED PER EDD-11-04587	11MMR11	RK HMR



- △ 0.00076 [0.00030] GOLD AT POINT OF MEASUREMENT, 0.00051 [0.00020] MIN AT THE END POINTS OF AREA G, (LOCALIZED GOLD PLATE AREA), 0.0038 [0.00150] TIN-LEAD ON LOCALIZED TIN PLATED AREA, ALL OVER 0.0013 [0.00050] NICKEL
- △ USE 1.32±0.02 [0.0520±.0010] DRILLED HOLE (#55 DRILL), FINISH TO BE TIN-LEAD OVER 0.02 [0.001] MIN COPPER.
- △ DIMENSION APPLIES AT BASE OF SHROUD.
- △ THE NOTED DIMENSIONS APPLY AT THE MATING FACE OF THE HOUSING.
- △ 0.0038 [0.00150] TIN-LEAD ON HOLD DOWN, ALL OVER 0.0013 [0.00050] NICKEL.
- 6. IF PLANNING TO USE MORE THAN ONE MATING PAIR OF CONNECTORS TO INTERCONNECT 2 BOARDS, PLEASE REFER TO SPACING PARAGRAPH IN APPLICATION SPEC, #114-7010
- △ POINT OF MEASUREMENT
- △ DIMENSIONS NOTED APPLY FROM THE BASIC DIMENSION LINE (NOT THE CIRCUIT CAVITY CENTER LINE) TO THE SURFACE INDICATED.
- △ 0.00076 [0.00030] GOLD AT POINT OF MEASUREMENT, 0.00051 [0.00020] MIN AT THE END POINTS OF AREA G, (LOCALIZED GOLD PLATE AREA), 0.0038 [0.00150] TIN ON LOCALIZED TIN PLATED AREA, ALL OVER 0.0013 [0.00050] NICKEL.
- △ USE 1.32±0.02 [0.0520±.0010] DRILLED HOLE (#55 DRILL) FINISH TO BE TIN OVER 0.02 [0.001] MIN COPPER.
- △ 0.0038 [0.00150] TIN ON HOLDDOWN, ALL OVER 0.0013 [0.00050] NICKEL
- △ ROHS 2002/95/EC COMPLIANT.
- △ OBSOLETE PARTS: OBSOLETE CIS STREAMLINING PER D.RENAUD/D.SINISI

FINISH	E	D	C	B	A	NUMBER OF POSITIONS	PART NUMBER
△	65.33	32.66	66.59	64.05	49	100	6-104693-0
△	58.98	29.48	60.24	57.70	44	90	5-104693-9
△	52.63	26.31	53.89	51.35	39	80	5-104693-8
△	46.28	23.13	47.54	45.00	34	70	5-104693-7
△	39.93	19.96	41.19	38.65	29	60	5-104693-6
△	33.58	16.78	34.84	32.30	24	50	5-104693-5
△	27.23	13.61	28.49	25.95	19	40	5-104693-4
△	20.88	10.43	22.14	19.60	14	30	5-104693-3
△	14.53	7.26	15.79	13.25	9	20	5-104693-2
△	8.18	4.08	9.44	6.90	4	10	5-104693-1
△	65.33	32.66	66.59	64.05	49	100	1-104693-0
△	58.98	29.48	60.24	57.70	44	90	404693-9
△	52.63	26.31	53.89	51.35	39	80	104693-8
△	46.28	23.13	47.54	45.00	34	70	104693-7
△	39.93	19.96	41.19	38.65	29	60	104693-6
△	33.58	16.78	34.84	32.30	24	50	104693-5
△	27.23	13.61	28.49	25.95	19	40	104693-4
△	20.88	10.43	22.14	19.60	14	30	104693-3
△	14.53	7.26	15.79	13.25	9	20	104693-2
△	8.18	4.08	9.44	6.90	4	10	104693-1

THIS DRAWING IS A CONTROLLED DOCUMENT. THE SHELL SHOULD BE KEPT IN THE ORIGINAL FILE.

DATE: 114-7010

REV: A1

CUSTOMER DRAWING

TE Connectivity
 HEADERS ASSEMBLY, SURFACE MOUNT,
 AMPHINOX 50/50 GRID
 (0.90 [0.350] MATED HEIGHT)

REVISED PER EDD-11-04587