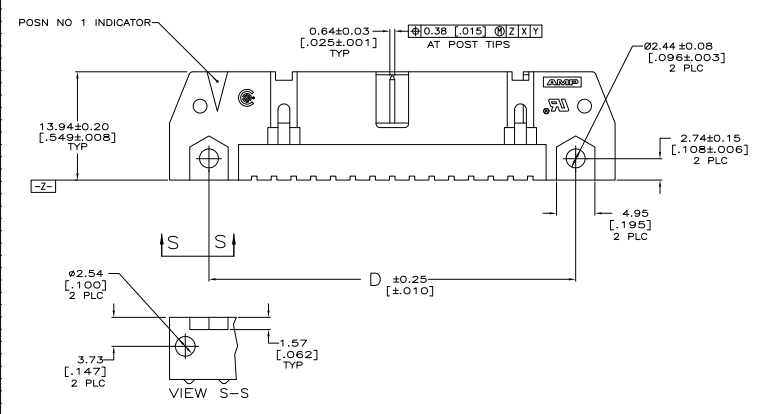
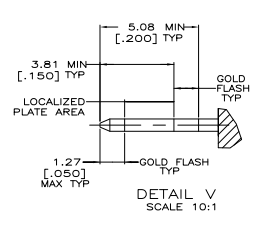
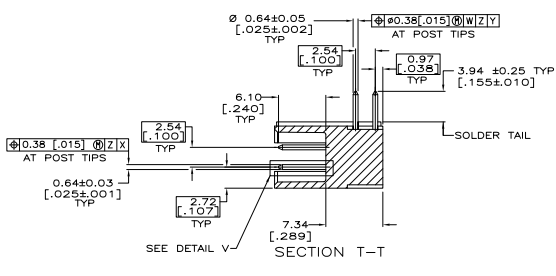
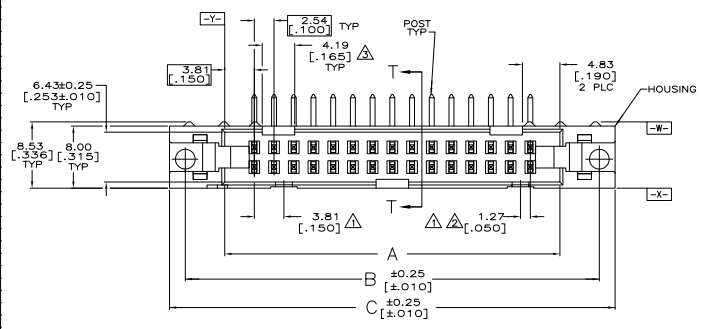
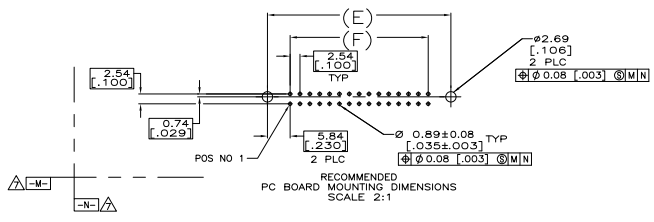


THIS DRAWING IS UNPUBLISHED
 ALL RIGHTS RESERVED

REV	DATE	DESCRIPTION	BY	APP
00				
F1		REVISED PER EDD-11-004835	11MMR11	RK HMR



SEE SHEET 2 FOR TABLE & NOTES

THIS DRAWING IS A CONTROLLED DOCUMENT.		REV. 01-20-01 DATE 01-20-01 BY M. WILKINSLEY DATE 01-20-01 PART NO. 108-40018 REV. 01-20-01 PART NO. 108-40018	TE Connectivity TE Connectivity HEADERS ASSY, UNIVERSAL AMP-LATCH
DIMENSIONS IN INCHES DECIMALS FRACTIONS ANGLES RADIUS DIAMETER HOLE POSITION HOLE SIZE HOLE LOCATION HOLE DEPTH HOLE TOLERANCE HOLE FINISH HOLE TYP	DIMENSIONAL TOLERANCES DIMENSIONS DECIMALS FRACTIONS ANGLES RADIUS DIAMETER HOLE POSITION HOLE SIZE HOLE LOCATION HOLE DEPTH HOLE TOLERANCE HOLE FINISH HOLE TYP	SIZE DATE SIZE DRAWING NO. PART NO. REV. NO. REV. DATE A1 00779 05102162 CUSTOMER DRAWING	REVISIONS DATE BY APP 11MMR11 RK HMR

488 12/11

THIS DRAWING IS UNPUBLISHED	NECESSARY FOR FABRICATION
ALL RIGHTS RESERVED	

REV	DATE	DESCRIPTION	BY	APP
00		SEE SHEET 1		

- △ COORDINATE DIMENSION APPLIES FROM BASIC LOCATION.
- △ 8, 10 AND 14 POSITION SIZES CONTAIN ONLY ONE SLOT FOR SNAP-IN POLARIZER (MILITARY POLARIZATION) LOCATED AS SHOWN.
- △ 8 AND 10 POSITION SIZES CONTAIN ONLY ONE SLOT FOR DUAL POLARIZATION, LOCATED AS SHOWN.
- 4. RECOMMENDED PRINTED CIRCUIT BOARD THICKNESS IS 3.18 [-.125].
- △ MATERIAL:
HOUSING: GLASS FILLED NYLON OR POLYESTER, UL94V-0 RATED, SEE TABLE FOR COLOR.
POSTS: BRASS
- △ FINISH:
POSTS: GOLD FLASH OVER PALLADIUM-NICKEL PLATE, 0.76µm[.000030] MIN TOTAL ON THE LOCALIZED PLATE AREA, 2.54µm[.000100] MIN TIN PLATE ON THE SOLDER-TAIL, 1.27µm[.000050] MIN NICKEL UNDERPLATE ON THE ENTIRE POST.
-OR-
0.76µm[.000030] MIN GOLD PLATE ON THE LOCALIZED PLATE AREA, 2.54µm[.000100] MIN TIN PLATE ON THE SOLDER-TAIL, 1.27µm[.000050] MIN NICKEL UNDERPLATE ON THE ENTIRE POST.
- △ DATUMS -M- & -N- TO BE ESTABLISHED BY CUSTOMER.

BLUE	73.66	85.34	85.34	95.50	91.44	81.28	60	3-5102162-1
	[2.900]	[3.360]	[3.360]	[3.760]	[3.600]	[3.200]		
BLUE	60.96	72.64	72.64	82.80	78.74	68.58	50	3-5102162-0
	[2.400]	[2.860]	[2.860]	[3.260]	[3.100]	[2.700]		
BLUE	30.48	42.16	42.16	52.32	48.26	38.10	26	2-5102162-6
	[1.200]	[1.660]	[1.660]	[2.060]	[1.900]	[1.500]		
BLUE	15.24	26.92	26.92	37.08	33.02	22.86	14	2-5102162-2
	[.600]	[1.060]	[1.060]	[1.460]	[1.300]	[.900]		
BLUE	10.16	21.84	21.84	32.00	27.94	17.78	10	2-5102162-1
	[.400]	[.860]	[.860]	[1.260]	[1.100]	[.700]		
BLACK	78.74	90.42	90.42	100.58	96.52	86.36	64	1-5102162-2
	[3.100]	[3.560]	[3.560]	[3.960]	[3.800]	[3.400]		
BLACK	73.66	85.34	85.34	95.50	91.44	81.28	60	1-5102162-1
	[2.900]	[3.360]	[3.360]	[3.760]	[3.600]	[3.200]		
BLACK	60.96	72.64	72.64	82.80	78.74	68.58	50	1-5102162-0
	[2.400]	[2.860]	[2.860]	[3.260]	[3.100]	[2.700]		
OBSOLETE	48.26	59.94	59.94	70.10	66.04	55.88	40	5102162-9
	[1.900]	[2.360]	[2.360]	[2.760]	[2.600]	[2.200]		
BLACK	40.64	52.32	52.32	62.48	58.42	48.26	34	5102162-8
	[1.600]	[2.060]	[2.060]	[2.460]	[2.300]	[1.900]		
BLACK	35.56	47.24	47.24	57.40	53.34	43.18	30	5102162-7
	[1.400]	[1.860]	[1.860]	[2.260]	[2.100]	[1.700]		
OBSOLETE	30.48	42.16	42.16	52.32	48.26	38.10	26	5102162-6
	[1.200]	[1.660]	[1.660]	[2.060]	[1.900]	[1.500]		
BLACK	27.94	39.62	39.62	49.78	45.72	35.56	24	5102162-5
	[1.100]	[1.560]	[1.560]	[1.960]	[1.800]	[1.400]		
OBSOLETE	22.86	34.54	34.54	44.70	40.64	30.48	20	5102162-4
	[.900]	[1.360]	[1.360]	[1.760]	[1.600]	[1.200]		
BLACK	17.78	29.46	29.46	39.62	35.56	25.40	16	5102162-3
	[.700]	[1.160]	[1.160]	[1.560]	[1.400]	[1.000]		
BLACK	15.24	26.92	26.92	37.08	33.02	22.86	14	5102162-2
	[.600]	[1.060]	[1.060]	[1.460]	[1.300]	[.900]		
BLACK	10.16	21.84	21.84	32.00	27.94	17.78	10	5102162-1
	[.400]	[.860]	[.860]	[1.260]	[1.100]	[.700]		

HOUSING COLOR	F	E	D	C	B	A	NO OF POSN	PART NUMBER
---------------	---	---	---	---	---	---	------------	-------------

THIS DRAWING IS A CONTROLLED DOCUMENT. SEE ATTACHED DOCUMENT FOR THE LATEST REVISIONS.

TE Connectivity

TE Connectivity
TE CONNECTIVITY CORPORATION
10000 NE PHOENIX AVENUE
PORTLAND, OR 97208-3450
TEL: 503.253.4000 FAX: 503.253.4001
WWW.TECONNECTIVITY.COM

108-40018

HEADER ASSY, UNIVERSAL AMP-LATCH

DATE: 00779

CUSTOMER DRAWING

REV: 1.1

DATE: 00779

REV: 1.1

DATE: 00779

REV: 1.1