

4

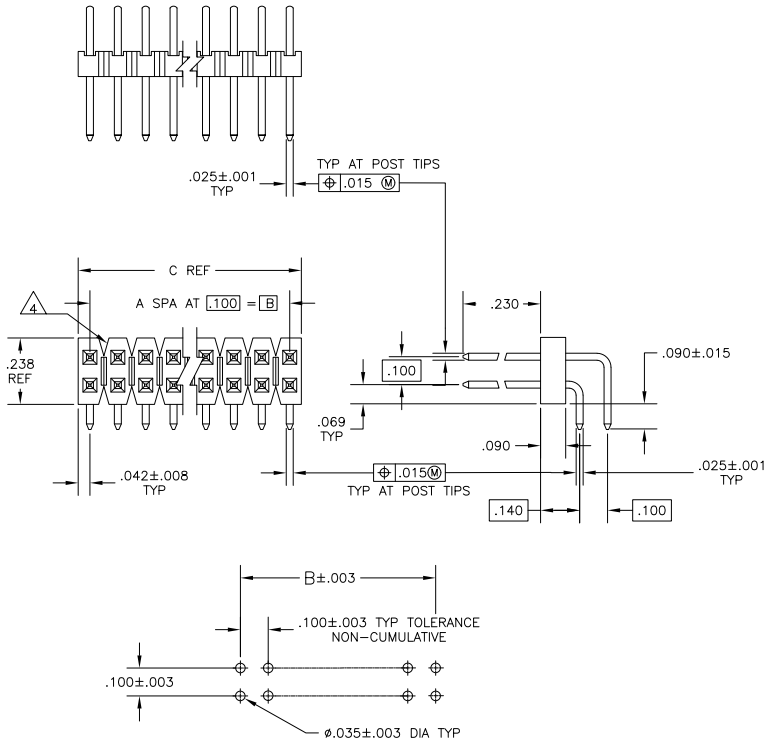
3

2

1

THIS DRAWING IS UNPUBLISHED. RELEASED FOR PUBLICATION. ALL RIGHTS RESERVED.

LOC	DIST	REVISIONS			
P	LTR	DESCRIPTION	DATE	BY	APPD
AD	00				
	L2	REVISED PER ECO-11-004820	11MAR11	RK	HMR



RECOMMENDED HOLE LAYOUT

- 1 ASSEMBLIES MAY BE BROKEN TO THE DESIRED NUMBER OF POSITIONS
- 2 TRUE POSITION TOLERANCE OF THE POST TIPS APPLIES WHEN THE HEADERS ARE HELD FLAT AGAINST THE PRINTED CIRCUIT BOARD
- $\triangle 3$.000100-.000200 MATTE TIN-LEAD OVER .000050 NICKEL ENTIRE POST
- $\triangle 4$ BREAKAWAY NOTCH ANGLE CAN BE ORIENTED TO THE RIGHT (AS SHOWN) OR TO THE LEFT
- $\triangle 5$.000100-.000200 BRIGHT TIN OVER .000050 NICKEL ENTIRE POST
- $\triangle 6$ PRELIMINARY PART-NOT RELEASED FOR PRODUCTION.
- $\triangle 7$.000100-.000200 MATTE TIN OVER .000050 NICKEL ENTIRE POST
- $\triangle 8$ HIGH TEMP CONFIGURATION
- $\triangle 9$ OBSOLETE PARTS: OBSOLETE CIS STREAMLINING PER D.RENAUD/D.SINISI

THIS DRAWING IS A CONTROLLED DOCUMENT.		BY: D. RINGLEY 30JUL85	TE Connectivity	
DIMENSIONS: INCHES		CHK: J. GEFSEFORD 27AJ003	ASSEMBLY, MOD II, HEADER, BREAKAWAY, DOUBLE ROW, RIGHT ANGLE, .100X.100 C/L, WITH .025 SQ. POSTS	
TOLERANCES UNLESS OTHERWISE SPECIFIED:		APP: J. GEFSEFORD 27AJ003	SIZE: A2 00779 C=103795	
0 PLC ± .005		PRODUCT SPEC: -	RESTRICTED TO: -	
1 PLC ± .005		APPLICATION SPEC: -	CUSTOMER DRAWING	
2 PLC ± .005		WEIGHT: -	SCALE: 4:1 SHEET: 1 of 2 REV: L2	
3 PLC ± .005		FINISH: -		
4. ANGLES ± .005		SEE TABLE		

4

3

2

1

THIS DRAWING IS UNPUBLISHED. RELEASED FOR PUBLICATION. ALL RIGHTS RESERVED.

LOC	DIST	P	LTR	DESCRIPTION	DATE	BY	APPD
AD	00			SEE SHEET 1			

REMARKS	PLATING	C	B	A	NO OF POS	ASSEMBLY PART NUMBER
		3.984	3.900	39	80	9-103795-0
		3.884	3.800	38	78	8-103795-9
		3.784	3.700	37	76	8-103795-8
		3.684	3.600	36	74	8-103795-7
		3.584	3.500	35	72	8-103795-6
		3.484	3.400	34	70	8-103795-5
		3.284	3.300	33	68	8-103795-4
		3.284	3.200	32	66	8-103795-3
		3.184	3.100	31	64	8-103795-2
		3.084	3.000	30	62	8-103795-1
		2.984	2.900	29	60	8-103795-0
		2.884	2.800	28	58	7-103795-9
		2.784	2.700	27	56	7-103795-8
		2.684	2.600	26	54	7-103795-7
		2.584	2.500	25	52	7-103795-6
		2.484	2.400	24	50	7-103795-5
		2.384	2.300	23	48	7-103795-4
		2.284	2.200	22	46	7-103795-3
		2.184	2.100	21	44	7-103795-2
		2.084	2.000	20	42	7-103795-1
		1.984	1.900	19	40	7-103795-0
		1.884	1.800	18	38	6-103795-9
		1.784	1.700	17	36	6-103795-8
		1.684	1.600	16	34	6-103795-7
		1.584	1.500	15	32	6-103795-6
		1.484	1.400	14	30	6-103795-5
		1.384	1.300	13	28	6-103795-4
		1.284	1.200	12	26	6-103795-3
		1.184	1.100	11	24	6-103795-2
		1.084	1.000	10	22	6-103795-1
		.984	.900	9	20	6-103795-0
		.884	.800	8	18	5-103795-9
		.784	.700	7	16	5-103795-8
		.684	.600	6	14	5-103795-7
		.584	.500	5	12	5-103795-6
		.484	.400	4	10	5-103795-5
		.384	.300	3	8	5-103795-4
		.284	.200	2	6	5-103795-3
		.184	.100	1	4	5-103795-2
		.084			2	5-103795-1

REMARKS	PLATING	C	B	A	NO OF POS	ASSEMBLY PART NUMBER
		.384	.300	3	8	4-103795-1
		3.984	3.900	39	80	4-103795-0
		3.884	3.800	38	78	3-103795-9
		3.784	3.700	37	76	3-103795-8
		3.684	3.600	36	74	3-103795-7
		3.584	3.500	35	72	3-103795-6
		3.484	3.400	34	70	3-103795-5
		3.284	3.300	33	68	3-103795-4
		3.284	3.200	32	66	3-103795-3
		3.184	3.100	31	64	3-103795-2
		3.084	3.000	30	62	3-103795-1
		2.984	2.900	29	60	3-103795-0
		2.884	2.800	28	58	2-103795-9
		2.784	2.700	27	56	2-103795-8
		2.684	2.600	26	54	2-103795-7
		2.584	2.500	25	52	2-103795-6
		2.484	2.400	24	50	2-103795-5
		2.384	2.300	23	48	2-103795-4
		2.284	2.200	22	46	2-103795-3
		2.184	2.100	21	44	2-103795-2
		2.084	2.000	20	42	2-103795-1
		1.984	1.900	19	40	2-103795-0
		1.884	1.800	18	38	1-103795-9
		1.784	1.700	17	36	1-103795-8
		1.684	1.600	16	34	1-103795-7
		1.584	1.500	15	32	1-103795-6
		1.484	1.400	14	30	1-103795-5
		1.384	1.300	13	28	1-103795-4
		1.284	1.200	12	26	1-103795-3
		1.184	1.100	11	24	1-103795-2
		1.084	1.000	10	22	1-103795-1
		.984	.900	9	20	1-103795-0
		.884	.800	8	18	103795-9
		.784	.700	7	16	103795-8
		.684	.600	6	14	103795-7
		.584	.500	5	12	103795-6
		.484	.400	4	10	103795-5
		.384	.300	3	8	103795-4
		.284	.200	2	6	103795-3
		.184	.100	1	4	103795-2
		.084			2	103795-1

THIS DRAWING IS A CONTROLLED DOCUMENT.

DESIGNED BY: L. D. RINGLEY 30/JUL/85	DATE: 27/JUN/03	 TE Connectivity
CHKD BY: J. GEFORD	DATE: 27/JUN/03	
APPD BY: J. GEFORD	DATE: 27/JUN/03	ASSEMBLY, MOD II, HEADER, BREAKAWAY, DOUBLE ROW, RIGHT ANGLE, .100X.100 C/L, WITH .025 SQ. POSTS
PRODUCT SPEC: -	DATE: 27/JUN/03	
MATERIAL: -	FINISH: -	RESTRICTED TO: -
SEE TABLE	CUSTOMER DRAWING	SCALE: 1:1 SHEET 2 of 2 REV L2