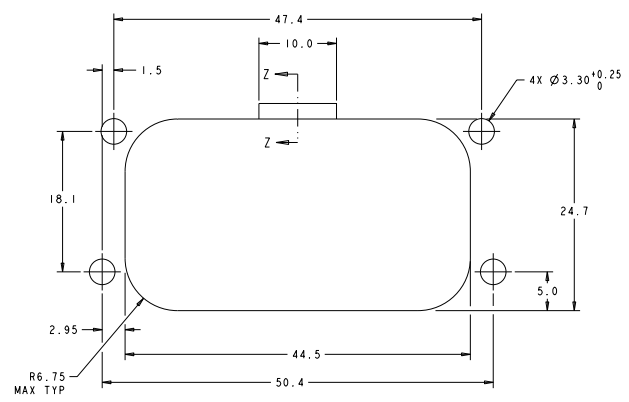
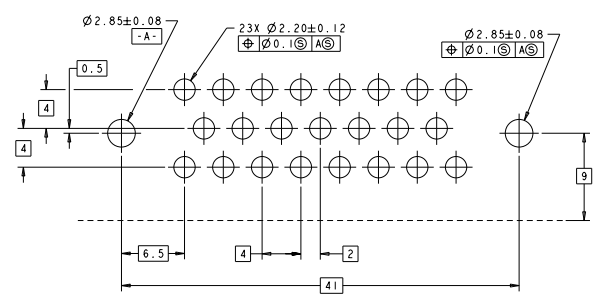


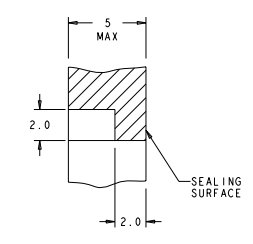
REV. NO.		REVISIONS	
DATE	BY	DESCRIPTION	APP'D.
00	GE	SEE SHEET 1	



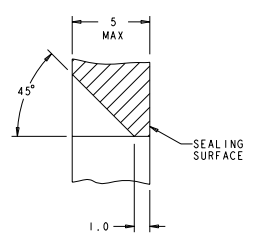
RECOMMENDED MOUNTING HOLE LAYOUT FOR 5.0 MAX THICK PANEL



RECOMMENDED P.C. BOARD LAYOUT FOR 1.57 THICK P.C. BOARD



SECTION Z-Z
OPTIONAL CONSTRUCTION IF THICKNESS IS GREATER THAN 2.0
SCALE 8:1



SECTION Z-Z
OPTIONAL CONSTRUCTION IF THICKNESS IS GREATER THAN 2.0
SCALE 8:1

DATE: 31DEC2002	BY: JESJAL	31DEC2002	31DEC2002	31DEC2002
REVISIONS:	NO. 00	DESCRIPTION	DATE	BY
SEE TABLE				
CUSTOMER DRAWING		STATE: CA	CITY: SAN JOSE	ZIP: 95128
		PHONE: 408-778-0078	FAX: 408-778-0069	WWW: WWW.TYPI.COM
		TYPI ELECTRONICS MILLSBORO, PA 17545-3400		
HEADER ASSEMBLY, 23 POSITION, SNAP-IN, AMPSEAL				
		SCALE: 2:1	SHEET: 2	TOTAL: 3