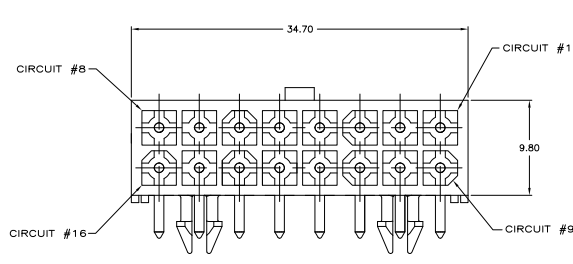
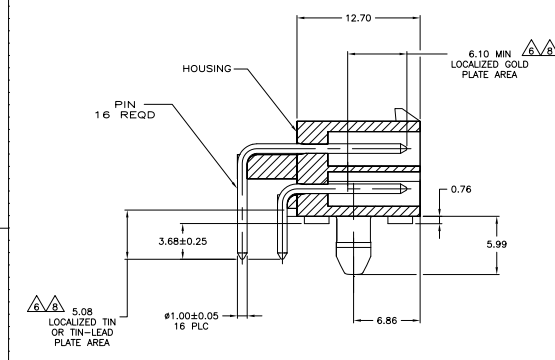
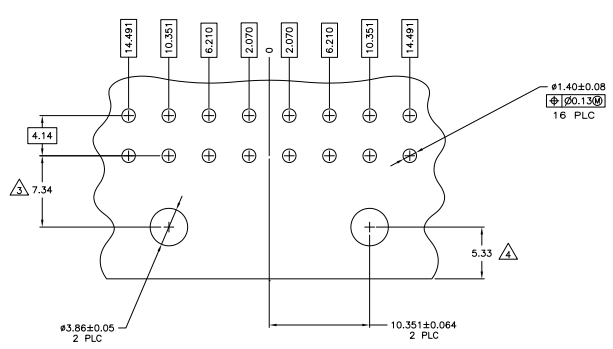


THIS DRAWING IS UNPUBLISHED
 ALL RIGHTS RESERVED

REV. NO.		DATE	BY	APP'D
00	CM			
REVISED PER EDD-11-004917		11MAR11	RK	HMR



- PINS TO COMPLY WITH AMP SOLDERABILITY SPEC 109-11-3.
 - MATES WITH PLUG P/N 770583-1.
- △ COORDINATE DIMENSION APPLIES FROM CENTER OF ACTUAL FEATURE.
 △ RECOMMENDED FOR EDGE MOUNTING.
- △ 0.00381 MIN MATTE TIN LEAD OVER 0.00127 MIN NICKEL ENTIRE LENGTH OF PIN.
- △ 0.00076 MIN GOLD PLATE IN THE LOCALIZED PLATE AREA, 0.00381 MIN MATTE TIN LEAD IN THE LOCALIZED PLATE AREA, BOTH OVER 0.00127 MIN NICKEL.
- △ 0.00381 MIN MATTE TIN OVER 0.00127 MIN NICKEL.
- △ 0.00076 MIN GOLD PLATE IN THE LOCALIZED GOLD PLATE AREA, 0.00381 MIN MATTE TIN IN THE LOCALIZED TIN PLATE AREA, BOTH OVER 0.00127 MIN NICKEL.



RECOMMENDED MOUNTING HOLE PATTERN FOR 1.57 THICK P.C. BOARD

3.68	1.45	34.70	1.366
2.070	.0815	14.491	.5705
1.57	.062	12.70	.500
1.40	.055	10.351	.4075
1.00	.039	9.80	.386
0.76	.030	7.34	.299
0.25	.010	6.86	.270
0.13	.005	6.210	.2445
0.08	.003	6.10	.240
0.064	.0025	5.99	.236
0.05	.002	5.33	.210
0.00381	0.00150	5.08	.200
0.00127	0.00050	4.14	.163
0.00076	0.00030	3.66	.152
MM	IN	MM	IN

CONVERSION TABLE

MATERIAL	FINISH	MATERIAL	COLOR	PART NO.
BRASS	△	NYLON, UL94V-0	WHITE	1-770974-1
BRASS	△	NYLON, UL94V-0	WHITE	1-770974-0
BRASS	△	NYLON, UL94V-0	WHITE	770974-2
BRASS	△	NYLON, UL94V-0	WHITE	770974-1

TE Connectivity

THIS DRAWING IS A CONTROLLED DOCUMENT.

UNLESS OTHERWISE SPECIFIED:

UNIT: MILLIMETERS

TOLERANCES:

DECIMALS: ±0.25

FRACTIONS: ±0.10

ANGLES: ±0.5

POSITION: ±0.15

FORMING: ±0.15

SEE TABLE

DATE: 11/07/11

DRAWING NO: A100779

CUSTOMER DRAWING

TE Connectivity
 HEADER ASSEMBLY, RIGHT ANGLE,
 WITH SHORT PEG, 16 CIRCUIT,
 MINI UNIVERSAL MATE-N-LOK(TM)

REWORKED TO: 770974-1

SIZE: S-1 SHEET: 1 OF 1

