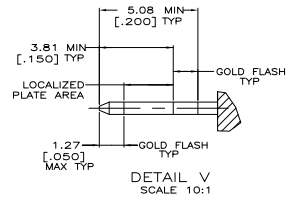
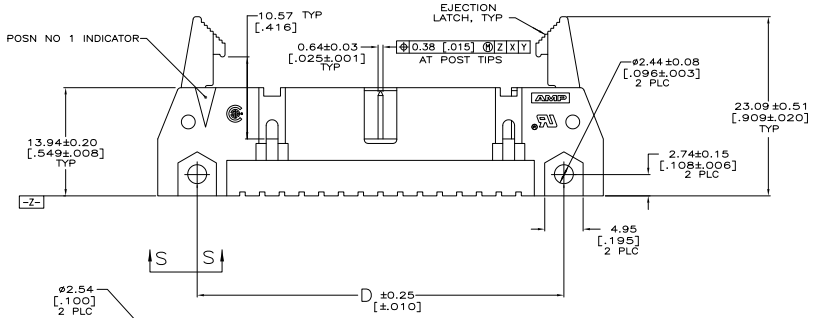
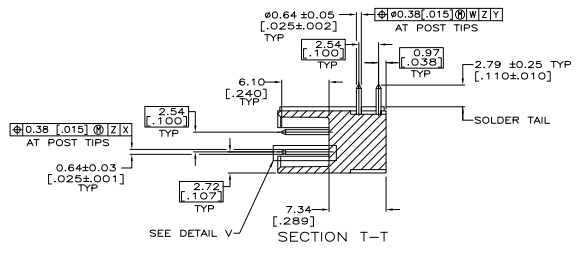
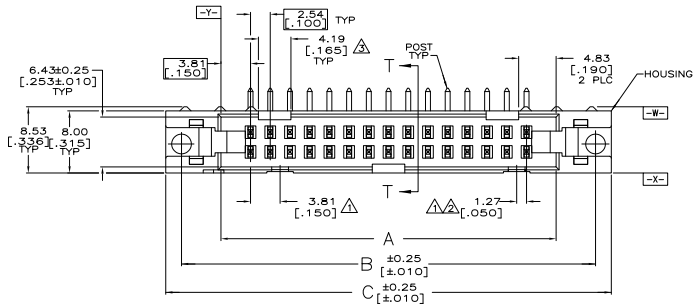
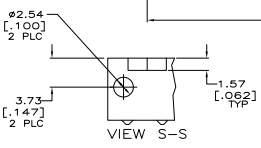


EJECTION LATCHES OMITTED IN THIS VIEW FOR CLARITY



SEE SHEET 2 FOR TABLE & NOTES



| | | | | | |
|---|--|---------|---------------|-----------------|--|
| THIS DRAWING IS A CONTROLLED DOCUMENT. | | REV. 00 | DATE 01-27-01 | TE Connectivity | |
| DRAWN BY: J. WILMSLEY | | REV. 01 | DATE 01-27-01 | TE Connectivity | |
| CHECKED BY: J. WILMSLEY | | REV. 02 | DATE 01-27-01 | TE Connectivity | |
| APPROVED BY: J. WILMSLEY | | REV. 03 | DATE 01-27-01 | TE Connectivity | |
| PART NO. 108-40018 | | REV. 04 | DATE 01-27-01 | TE Connectivity | |
| DESCRIPTION: HEADER ASSY, UNIVERSAL AMP-LATCH | | REV. 05 | DATE 01-27-01 | TE Connectivity | |
| CUSTOMER DRAWING | | REV. 06 | DATE 01-27-01 | TE Connectivity | |
| SIZE: A1 | | REV. 07 | DATE 01-27-01 | TE Connectivity | |
| DRAWING NO. 100779 | | REV. 08 | DATE 01-27-01 | TE Connectivity | |
| PART NO. 108-40018 | | REV. 09 | DATE 01-27-01 | TE Connectivity | |
| DESCRIPTION: HEADER ASSY, UNIVERSAL AMP-LATCH | | REV. 10 | DATE 01-27-01 | TE Connectivity | |
| CUSTOMER DRAWING | | REV. 11 | DATE 01-27-01 | TE Connectivity | |

- △ COORDINATE DIMENSION APPLIES FROM BASIC LOCATION.
- △ 10 AND 14 POSITION SIZES CONTAIN ONLY ONE SLOT FOR SNAP-IN POLARIZER (MILITARY POLARIZATION) LOCATED AS SHOWN.
- △ 10 POSITION SIZES CONTAIN ONLY ONE SLOT FOR DUAL POLARIZATION, LOCATED AS SHOWN.
- 4. RECOMMENDED PRINTED CIRCUIT BOARD THICKNESS IS 1.57 [.062].
- △ DISTANCE REQUIRED BY EJECTION LATCHES IN THE OPEN POSITION.
- △ HOUSING & LATCHES: GLASS FILLED NYLON OR POLYESTER, UL94V-0 RATED, SEE TABLE FOR COLOR. POSTS: BRASS.
- △ POSTS: GOLD FLASH OVER PALLADIUM-NICKEL PLATE, 0.76μm[.000030] MIN TOTAL ON THE LOCALIZED PLATE AREA, 2.54μm[.00100] MIN TIN PLATE ON THE SOLDER-TAIL, 1.27μm[.000050] MIN NICKEL UNDERPLATE ON THE ENTIRE POST.
-OR-
0.76μm[.000030] MIN GOLD PLATE ON THE LOCALIZED PLATE AREA, 2.54μm[.00100] MIN TIN PLATE ON THE SOLDER-TAIL, 1.27μm[.000050] MIN NICKEL UNDERPLATE ON THE ENTIRE POST.
- △ DATUMS -M- & -N- TO BE ESTABLISHED BY CUSTOMER.

| REV | DATE | DESCRIPTION | BY | CHKD | APPD | | | | |
|----------|---------|-------------|---------|---------|---------|---------|-------|----|-------------|
| OBSOLETE | 53.34 | 65.02 | 65.02 | 75.18 | 71.12 | 60.96 | BLUE | 44 | 3-5499345-3 |
| | [2.100] | [2.560] | [2.560] | [2.960] | [2.800] | [2.400] | | | |
| | 78.74 | 90.42 | 90.42 | 100.58 | 96.52 | 86.36 | BLUE | 64 | 3-5499345-2 |
| | [3.100] | [3.560] | [3.560] | [3.960] | [3.800] | [3.400] | | | |
| | 73.66 | 85.34 | 85.34 | 95.50 | 91.44 | 81.28 | BLUE | 60 | 3-5499345-1 |
| | [2.900] | [3.360] | [3.360] | [3.760] | [3.600] | [3.200] | | | |
| | 60.96 | 72.64 | 72.64 | 82.80 | 78.74 | 68.58 | BLUE | 50 | 3-5499345-0 |
| | [2.400] | [2.860] | [2.860] | [3.260] | [3.100] | [2.700] | | | |
| OBSOLETE | 48.26 | 59.94 | 59.94 | 70.10 | 66.04 | 55.88 | BLUE | 40 | 2-5499345-9 |
| | [1.900] | [2.360] | [2.360] | [2.760] | [2.600] | [2.200] | | | |
| | 40.64 | 52.32 | 52.32 | 62.48 | 58.42 | 48.26 | BLUE | 34 | 2-5499345-8 |
| | [1.600] | [2.060] | [2.060] | [2.460] | [2.300] | [1.900] | | | |
| OBSOLETE | 30.48 | 42.16 | 42.16 | 52.32 | 48.26 | 38.10 | BLUE | 26 | 2-5499345-6 |
| | [1.200] | [1.660] | [1.660] | [2.060] | [1.900] | [1.500] | | | |
| | 22.86 | 34.54 | 34.54 | 44.70 | 40.64 | 30.48 | BLUE | 20 | 2-5499345-4 |
| | [.900] | [1.360] | [1.360] | [1.760] | [1.600] | [1.200] | | | |
| | 17.78 | 29.46 | 29.46 | 39.62 | 35.56 | 25.40 | BLUE | 16 | 2-5499345-3 |
| | [.700] | [1.160] | [1.160] | [1.560] | [1.400] | [1.000] | | | |
| OBSOLETE | 15.24 | 26.92 | 26.92 | 37.08 | 33.02 | 22.86 | BLUE | 14 | 2-5499345-2 |
| | [.600] | [1.060] | [1.060] | [1.460] | [1.300] | [.900] | | | |
| OBSOLETE | 10.16 | 21.84 | 21.84 | 32.00 | 27.94 | 17.78 | BLUE | 10 | 2-5499345-1 |
| | [.400] | [.860] | [.860] | [1.260] | [1.100] | [.700] | | | |
| OBSOLETE | 78.74 | 90.42 | 90.42 | 100.58 | 96.52 | 86.36 | BLACK | 64 | 1-5499345-2 |
| | [3.100] | [3.560] | [3.560] | [3.960] | [3.800] | [3.400] | | | |
| OBSOLETE | 73.66 | 85.34 | 85.34 | 95.50 | 91.44 | 81.28 | BLACK | 60 | 1-5499345-1 |
| | [2.900] | [3.360] | [3.360] | [3.760] | [3.600] | [3.200] | | | |
| | 60.96 | 72.64 | 72.64 | 82.80 | 78.74 | 68.58 | BLACK | 50 | 1-5499345-0 |
| | [2.400] | [2.860] | [2.860] | [3.260] | [3.100] | [2.700] | | | |
| | 48.26 | 59.94 | 59.94 | 70.10 | 66.04 | 55.88 | BLACK | 40 | 5499345-9 |
| | [1.900] | [2.360] | [2.360] | [2.760] | [2.600] | [2.200] | | | |
| OBSOLETE | 40.64 | 52.32 | 52.32 | 62.48 | 58.42 | 48.26 | BLACK | 34 | 5499345-8 |
| | [1.600] | [2.060] | [2.060] | [2.460] | [2.300] | [1.900] | | | |
| OBSOLETE | 30.48 | 42.16 | 42.16 | 52.32 | 48.26 | 38.10 | BLACK | 26 | 5499345-6 |
| | [1.200] | [1.660] | [1.660] | [2.060] | [1.900] | [1.500] | | | |
| | 27.94 | 39.62 | 39.62 | 49.78 | 45.72 | 35.56 | BLACK | 24 | 5499345-5 |
| | [1.100] | [1.560] | [1.560] | [1.960] | [1.800] | [1.400] | | | |
| OBSOLETE | 22.86 | 34.54 | 34.54 | 44.70 | 40.64 | 30.48 | BLACK | 20 | 5499345-4 |
| | [.900] | [1.360] | [1.360] | [1.760] | [1.600] | [1.200] | | | |
| OBSOLETE | 17.78 | 29.46 | 29.46 | 39.62 | 35.56 | 25.40 | BLACK | 16 | 5499345-3 |
| | [.700] | [1.160] | [1.160] | [1.560] | [1.400] | [1.000] | | | |
| | 15.24 | 26.92 | 26.92 | 37.08 | 33.02 | 22.86 | BLACK | 14 | 5499345-2 |
| | [.600] | [1.060] | [1.060] | [1.460] | [1.300] | [.900] | | | |
| | 10.16 | 21.84 | 21.84 | 32.00 | 27.94 | 17.78 | BLACK | 10 | 5499345-1 |
| | [.400] | [.860] | [.860] | [1.260] | [1.100] | [.700] | | | |

| | | | | | | | | |
|---|---|---|---|---|---|-----------------------|------------|-------------|
| F | E | D | C | B | A | HOUSING & LATCH COLOR | NO OF POSN | PART NUMBER |
| | | | | | | | | |

THIS DRAWING IS A CONTROLLED DOCUMENT.

DATE: 10/03/04
REV: 01/02/02

BY: M. WILMSELEY
DATE: 01/02/02

108-40018

TE Connectivity
HEADER ASSY, UNIVERSAL AMP-LATCH

SIZE: 2
DATE: 10/03/04
DRAWING NO: 100779
CUSTOMER: G=5499345