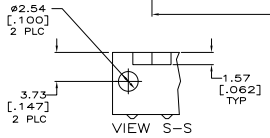
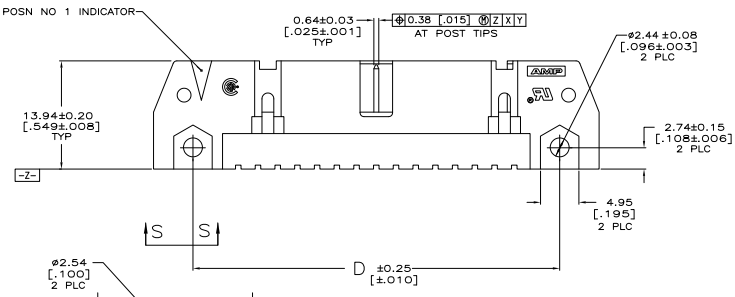
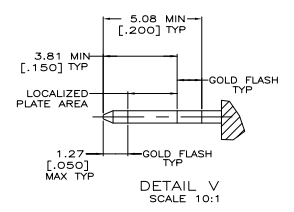
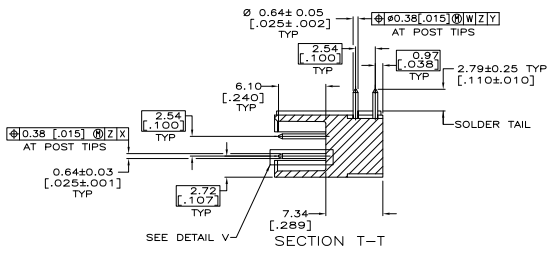
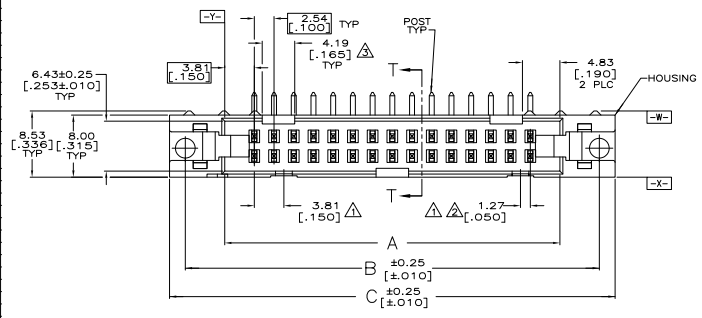
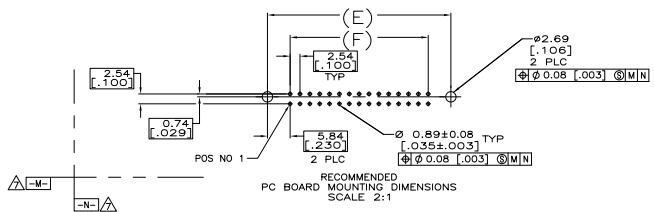


THIS DRAWING IS UNPUBLISHED
 ALL RIGHTS RESERVED

REV	DATE	DESCRIPTION	BY	CHK	APP
00					
F1		REVISED PER EDD-11-004835			



SEE SHEET 2 FOR TABLE & NOTES

THIS DRAWING IS A CONTROLLED DOCUMENT.		ATTACHMENT: 01-28-10	DATE: 01-28-10	BY: WJL/MSL	DATE: 01-28-10	REVISION: 1	REWORKED TO: ---
DESIGNER: ---	APPROVED: ---	DATE: 01-28-10	BY: WJL/MSL	DATE: 01-28-10	REVISION: 1	REWORKED TO: ---	DATE: 01-28-10
DATE: 01-28-10	BY: WJL/MSL	DATE: 01-28-10	REVISION: 1	REWORKED TO: ---	DATE: 01-28-10	REVISION: 1	REWORKED TO: ---
DATE: 01-28-10	BY: WJL/MSL	DATE: 01-28-10	REVISION: 1	REWORKED TO: ---	DATE: 01-28-10	REVISION: 1	REWORKED TO: ---
DATE: 01-28-10	BY: WJL/MSL	DATE: 01-28-10	REVISION: 1	REWORKED TO: ---	DATE: 01-28-10	REVISION: 1	REWORKED TO: ---
DATE: 01-28-10	BY: WJL/MSL	DATE: 01-28-10	REVISION: 1	REWORKED TO: ---	DATE: 01-28-10	REVISION: 1	REWORKED TO: ---
DATE: 01-28-10	BY: WJL/MSL	DATE: 01-28-10	REVISION: 1	REWORKED TO: ---	DATE: 01-28-10	REVISION: 1	REWORKED TO: ---
DATE: 01-28-10	BY: WJL/MSL	DATE: 01-28-10	REVISION: 1	REWORKED TO: ---	DATE: 01-28-10	REVISION: 1	REWORKED TO: ---
DATE: 01-28-10	BY: WJL/MSL	DATE: 01-28-10	REVISION: 1	REWORKED TO: ---	DATE: 01-28-10	REVISION: 1	REWORKED TO: ---
DATE: 01-28-10	BY: WJL/MSL	DATE: 01-28-10	REVISION: 1	REWORKED TO: ---	DATE: 01-28-10	REVISION: 1	REWORKED TO: ---

THIS DRAWING IS UNPUBLISHED
 ALL RIGHTS RESERVED

REV	DATE	DESCRIPTION	BY	CHK	APP
00		SEE SHEET 1			

- △ COORDINATE DIMENSION APPLIES FROM BASIC LOCATION.
- △ 10 AND 14 POSITION SIZES CONTAIN ONLY ONE SLOT FOR SNAP-IN POLARIZER (MILITARY POLARIZATION) LOCATED AS SHOWN.
- △ 10 POSITION SIZE CONTAINS ONLY ONE SLOT FOR DUAL POLARIZATION, LOCATED AS SHOWN.
- 4. RECOMMENDED PRINTED CIRCUIT BOARD THICKNESS IS 1.57 [.062].
- △ MATERIAL:
HOUSING: GLASS FILLED NYLON OR POLYESTER, UL94V-0 RATED, SEE TABLE FOR COLOR.
POSTS: BRASS
- △ FINISH:
POSTS: GOLD FLASH OVER PALLADIUM-NICKEL PLATE, 0.76μm[.000030] MIN TOTAL ON THE LOCALIZED PLATE AREA, 2.54μm[.000100] MIN TIN PLATE ON THE SOLDER-TAIL, 1.27μm[.000050] MIN NICKEL UNDERPLATE ON THE ENTIRE POST.
-OR-
0.76μm[.000030] MIN GOLD PLATE ON THE LOCALIZED PLATE AREA, 2.54μm[.000100] MIN TIN PLATE ON THE SOLDER-TAIL, 1.27μm[.000050] MIN NICKEL UNDERPLATE ON THE ENTIRE POST.
- △ DATUMS -M- & -N- TO BE ESTABLISHED BY CUSTOMER.

HOUSING AND LATCHES COLOR	F	E	D	C	B	A	NO OF POSN	PART NUMBER
BLUE	78.74 [3.100]	90.42 [3.560]	90.42 [3.560]	100.58 [3.960]	96.52 [3.800]	86.36 [3.400]	64	3-5102160-2
BLUE	73.66 [2.900]	85.34 [3.360]	85.34 [3.360]	95.50 [3.760]	91.44 [3.600]	81.28 [3.200]	60	3-5102160-1
OBSOLETE	60.96 [2.400]	72.64 [2.860]	72.64 [2.860]	82.80 [3.260]	78.74 [3.100]	68.58 [2.700]	50	3-5102160-0
OBSOLETE	48.26 [1.900]	59.94 [2.360]	59.94 [2.360]	70.10 [2.760]	66.04 [2.600]	55.88 [2.200]	40	2-5102160-9
OBSOLETE	40.64 [1.600]	52.32 [2.060]	52.32 [2.060]	62.48 [2.460]	58.42 [2.300]	48.26 [1.900]	34	2-5102160-8
BLUE	30.48 [1.200]	42.16 [1.660]	42.16 [1.660]	52.32 [2.060]	48.26 [1.900]	38.10 [1.500]	26	2-5102160-6
BLUE	22.86 [.900]	34.54 [1.360]	34.54 [1.360]	44.70 [1.760]	40.64 [1.600]	30.48 [1.200]	20	2-5102160-4
OBSOLETE	17.78 [.700]	29.46 [1.160]	29.46 [1.160]	39.62 [1.560]	35.56 [1.400]	25.40 [1.000]	16	2-5102160-3
BLUE	15.24 [.600]	26.92 [1.060]	26.92 [1.060]	37.08 [1.460]	33.02 [1.300]	22.86 [.900]	14	2-5102160-2
BLUE	10.16 [.400]	21.84 [.860]	21.84 [.860]	32.00 [1.260]	27.94 [1.100]	17.78 [.700]	10	2-5102160-1
BLACK	78.74 [3.100]	90.42 [3.560]	90.42 [3.560]	100.58 [3.960]	96.52 [3.800]	86.36 [3.400]	64	1-5102160-2
BLACK	73.66 [2.900]	85.34 [3.360]	85.34 [3.360]	95.50 [3.760]	91.44 [3.600]	81.28 [3.200]	60	1-5102160-1
BLACK	60.96 [2.400]	72.64 [2.860]	72.64 [2.860]	82.80 [3.260]	78.74 [3.100]	68.58 [2.700]	50	1-5102160-0
BLACK	48.26 [1.900]	59.94 [2.360]	59.94 [2.360]	70.10 [2.760]	66.04 [2.600]	55.88 [2.200]	40	5102160-9
BLACK	40.64 [1.600]	52.32 [2.060]	52.32 [2.060]	62.48 [2.460]	58.42 [2.300]	48.26 [1.900]	34	5102160-8
OBSOLETE	30.48 [1.400]	42.16 [1.860]	42.16 [1.860]	52.32 [2.260]	48.26 [2.100]	38.10 [1.700]	30	5102160-7
BLACK	30.48 [1.200]	42.16 [1.660]	42.16 [1.660]	52.32 [2.060]	48.26 [1.900]	38.10 [1.500]	26	5102160-6
BLACK	27.94 [1.100]	39.62 [1.560]	39.62 [1.560]	49.78 [1.960]	45.72 [1.800]	35.56 [1.400]	24	5102160-5
BLACK	22.86 [.900]	34.54 [1.360]	34.54 [1.360]	44.70 [1.760]	40.64 [1.600]	30.48 [1.200]	20	5102160-4
BLACK	17.78 [.700]	29.46 [1.160]	29.46 [1.160]	39.62 [1.560]	35.56 [1.400]	25.40 [1.000]	16	5102160-3
OBSOLETE	15.24 [.600]	26.92 [1.060]	26.92 [1.060]	37.08 [1.460]	33.02 [1.300]	22.86 [.900]	14	5102160-2
BLACK	10.16 [.400]	21.84 [.860]	21.84 [.860]	32.00 [1.260]	27.94 [1.100]	17.78 [.700]	10	5102160-1

THIS DRAWING IS A CONTROLLED DOCUMENT. SEE ATTACHMENT FOR CONTROL DOCUMENT.

TE Connectivity

TE Connectivity
 M. WILMSLEY
 108-40018
 HEADERS ASSY, UNIVERSAL
 AMP-LATCH

DATE: 00779
 DRAWING NO: 5102160
 CUSTOMER DRAWING

REV: 4.1
 SHEET: 2
 OF: 2