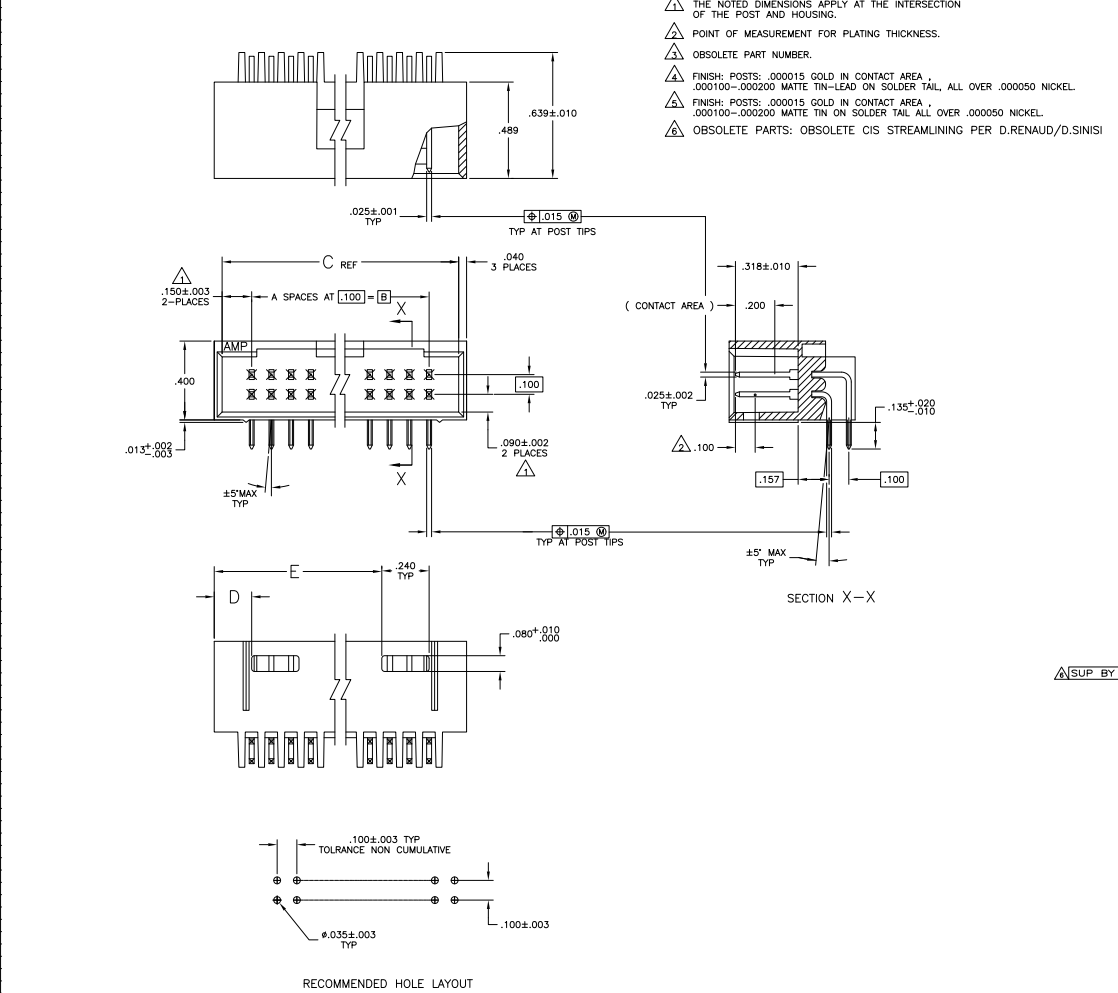


THIS DRAWING IS UNPUBLISHED
 ALL RIGHTS RESERVED



- △ THE NOTED DIMENSIONS APPLY AT THE INTERSECTION OF THE POST AND HOUSING.
- △ POINT OF MEASUREMENT FOR PLATING THICKNESS.
- △ OBSOLETE PART NUMBER.
- △ FINISH: POSTS: .00015 GOLD IN CONTACT AREA , .000100-.000200 MATTE TIN-LEAD ON SOLDER TAIL, ALL OVER .000050 NICKEL.
- △ FINISH: POSTS: .00015 GOLD IN CONTACT AREA , .000100-.000200 MATTE TIN ON SOLDER TAIL ALL OVER .000050 NICKEL.
- △ OBSOLETE PARTS: OBSOLETE CIS STREAMLINING PER D.RENAUD/D.SINISI

REV	DATE	DESCRIPTION	BY	CHK	APP
AD	00				
H2		REVISED PER EDD-11-004820			

REV	DATE	DESCRIPTION	BY	CHK	APP		
△	3.490	.190	3.800	3.500	35	72	-8-102570-3
△	3.390	.190	3.700	3.400	34	70	-8-102570-2
△	3.290	.190	3.600	3.300	33	68	-8-102570-1
△	3.190	.190	3.500	3.200	32	66	-8-102570-0
△	3.090	.190	3.400	3.100	31	64	-7-102570-9
△	2.990	.190	3.300	3.000	30	62	-7-102570-8
△	2.890	.190	3.200	2.900	29	60	-7-102570-7
△	2.790	.190	3.100	2.800	28	58	-7-102570-6
△	2.690	.190	3.000	2.700	27	56	-7-102570-5
△	2.590	.190	2.900	2.600	26	54	-7-102570-4
△	2.490	.190	2.800	2.500	25	52	-7-102570-3
△	2.390	.190	2.700	2.400	24	50	-7-102570-2
△	2.290	.190	2.600	2.300	23	48	-7-102570-1
△	2.190	.190	2.500	2.200	22	46	-7-102570-0
△	2.090	.190	2.400	2.100	21	44	-6-102570-9
△	1.990	.190	2.300	2.000	20	42	-6-102570-8
△	1.790	.190	2.100	1.800	18	38	-6-102570-7
△	1.690	.190	2.000	1.700	17	36	-6-102570-6
△	1.590	.190	1.900	1.600	16	34	-6-102570-5
△	1.490	.190	1.800	1.500	15	32	-6-102570-4
△	1.390	.190	1.700	1.400	14	30	-6-102570-3
△	1.290	.190	1.600	1.300	13	28	-6-102570-2
△	1.190	.190	1.500	1.200	12	26	-6-102570-1
△	1.090	.190	1.400	1.100	11	24	-6-102570-0
△	.990	.190	1.300	1.000	10	22	-5-102570-9
△	.890	.190	1.200	.900	9	20	-5-102570-8
△	.490	.190	1.100	.800	8	18	-5-102570-7
△	.390	.190	1.000	.700	7	16	-5-102570-6
△	.390	.900	.600	.600	6	14	-5-102570-5
△	.290	.800	.500	.500	5	12	-5-102570-4
△	.290	.700	.400	.400	4	10	-5-102570-3
△	.190	.600	.300	.300	3	8	-5-102570-2
△	1.890	.190	2.200	1.900	19	40	-5-102570-1
△	3.490	.190	3.800	3.500	35	72	-3-102570-3
△	3.390	.190	3.700	3.400	34	70	-3-102570-2
△	3.290	.190	3.600	3.300	33	68	-3-102570-1
△	3.190	.190	3.500	3.200	32	66	-3-102570-0
△	3.090	.190	3.400	3.100	31	64	-2-102570-9
△	2.990	.190	3.300	3.000	30	62	-2-102570-8
△	2.890	.190	3.200	2.900	29	60	-2-102570-7
△	2.790	.190	3.100	2.800	28	58	-2-102570-6
△	2.690	.190	3.000	2.700	27	56	-2-102570-5
△	2.490	.190	2.800	2.500	25	52	-2-102570-3
△	2.390	.190	2.700	2.400	24	50	-2-102570-2
△	2.290	.190	2.600	2.300	23	48	-2-102570-1
△	2.190	.190	2.500	2.200	22	46	-2-102570-0
△	1.990	.190	2.300	2.000	20	42	-1-102570-8
△	1.790	.190	2.100	1.800	18	38	-1-102570-7
△	1.690	.190	2.000	1.700	17	36	-1-102570-6
△	1.590	.190	1.900	1.600	16	34	-1-102570-5
△	1.490	.190	1.800	1.500	15	32	-1-102570-4
△	1.390	.190	1.700	1.400	14	30	-1-102570-3
△	1.290	.190	1.600	1.300	13	28	-1-102570-2
△	1.190	.190	1.500	1.200	12	26	-1-102570-1
△	1.090	.190	1.400	1.100	11	24	-1-102570-0
△	.890	.190	1.200	.900	9	20	-1-102570-9
△	.490	.190	1.100	.800	8	18	-1-102570-8
△	.390	.190	1.000	.700	7	16	-1-102570-7
△	.390	.900	.600	.600	6	14	-1-102570-6
△	.290	.800	.500	.500	5	12	-1-102570-5
△	.290	.700	.400	.400	4	10	-1-102570-4
△	.190	.600	.300	.300	3	8	-1-102570-3
△	1.890	.190	2.200	1.900	19	40	-1-102570-2
△	1.890	.190	2.200	1.900	19	40	-1-102570-1

PLATING E D C B A NO OF PART NO ASSEMBLY OF POSN NUMBER

THIS DRAWING IS A CONTROLLED DOCUMENT. DATE: 11-11-87

DESIGNED BY: A. MAYER DATE: 11-11-87

DRW: J. P. G. DATE: 11-11-87

CHK: J. P. G. DATE: 11-11-87

APP: J. P. G. DATE: 11-11-87

REV: J. P. G. DATE: 11-11-87

DATE: 11-11-87

SIZE: 1/2" X 1/2" DATE: 11-11-87

CUSTOMER DRAWING: A100779 (G=102570) DATE: 11-11-87

TE Connectivity

HDR ASSY, MOD II, SHROUDED, .100X.100 C/A 4 SIDES, 68L ROW, PROFIT ANGLE W/ .002 SD POSTS