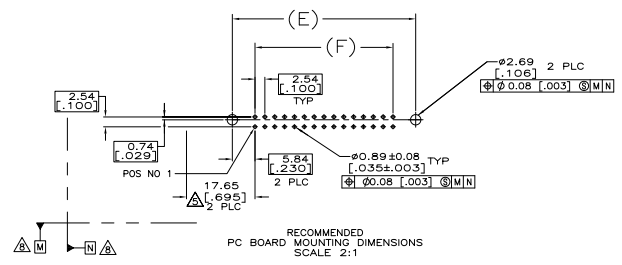


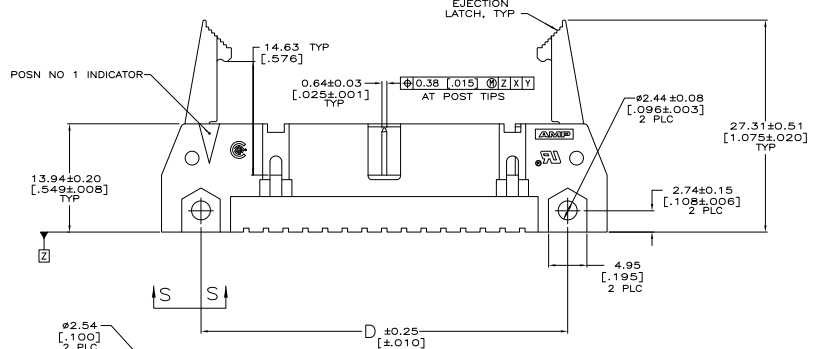
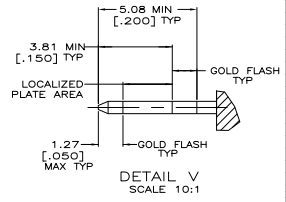
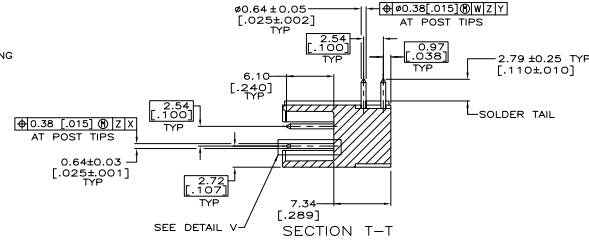
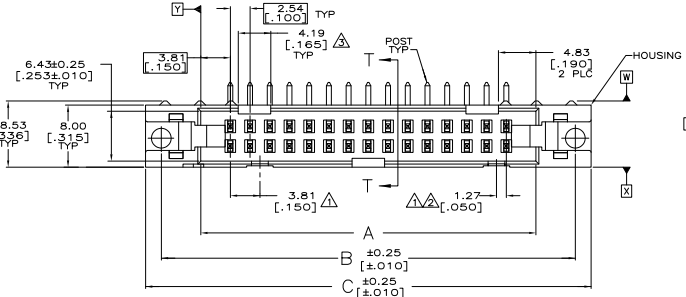
THIS DRAWING IS UNPUBLISHED
 ALL RIGHTS RESERVED

REV	DATE	DESCRIPTION	BY	CHK	APP
00					
F1		REVISED PER EDD-11-004835			

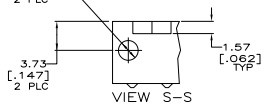


RECOMMENDED
 PC BOARD MOUNTING DIMENSIONS
 SCALE 2:1

EJECTION LATCHES OMITTED IN
 THIS VIEW FOR CLARITY



SEE SHEET 2 FOR TABLE & NOTES



THIS DRAWING IS A CONTROLLED DOCUMENT.		REV: 00	DATE: 01-27-01	BY: M. BOLASH	DATE: 01-27-01	APP: M. BOLASHLEY	DATE: 01-27-01	REVISED PER: EDD-11-004835	SCALE: 2:1
DRAWING NO: 108-40018		CUSTOMER DRAWING		DRAWING NO: 108-40018		DATE: 01-27-01		REVISED PER: EDD-11-004835	
DRAWING NO: 108-40018		CUSTOMER DRAWING		DRAWING NO: 108-40018		DATE: 01-27-01		REVISED PER: EDD-11-004835	

- △ COORDINATE DIMENSION APPLIES FROM BASIC LOCATION.
- △ 10 AND 14 POSITION SIZES CONTAIN ONLY ONE SLOT FOR SNAP-IN POLARIZER (MILITARY POLARIZATION) LOCATED AS SHOWN.
- △ 10 POSITION SIZES CONTAIN ONLY ONE SLOT FOR DUAL POLARIZATION, LOCATED AS SHOWN.
- 4. RECOMMENDED PRINTED CIRCUIT BOARD THICKNESS IS 1.57 [.062].
- △ DISTANCE REQUIRED BY EJECTION LATCHES IN THE OPEN POSITION.
- △ HOUSING & LATCHES: GLASS FILLED NYLON OR POLYESTER, UL94V-0 RATED, SEE TABLE FOR COLOR, POSTS: BRASS.
- △ POSTS: GOLD FLASH OVER PALLADIUM-NICKEL PLATE, 0.76µm[.000030] MIN TOTAL ON THE LOCALIZED PLATE AREA, 2.54µm[.000100] MIN TIN PLATE ON THE SOLDER-TAIL, 1.27µm[.000050] MIN NICKEL UNDERPLATE ON THE ENTIRE POST.
 -OR-
 0.76µm[.000030] MIN GOLD PLATE ON THE LOCALIZED PLATE AREA, 2.54µm[.000100] MIN TIN PLATE ON THE SOLDER-TAIL, 1.27µm[.000050] MIN NICKEL UNDERPLATE ON THE ENTIRE POST.
- △ DATUMS M & N TO BE ESTABLISHED BY CUSTOMER.

DESCRIPTION	53.34	65.02	65.02	75.18	71.12	60.96	44	3-5499141-3
BLUE	[2.100]	[2.560]	[2.560]	[2.960]	[3.800]	[2.400]		
BLUE	[3.100]	[3.560]	[3.560]	[3.960]	[3.800]	[3.400]	64	3-5499141-2
OBsolete BLUE	[2.900]	[3.360]	[3.360]	[3.760]	[3.600]	[3.200]	60	3-5499141-1
BLUE	[2.900]	[3.360]	[3.360]	[3.760]	[3.600]	[3.200]	50	3-5499141-0
OBsolete BLUE	[1.900]	[2.360]	[2.360]	[2.760]	[2.600]	[2.200]	40	2-5499141-9
BLUE	[1.600]	[2.060]	[2.060]	[2.460]	[2.300]	[1.900]	34	2-5499141-8
BLUE	[1.200]	[1.660]	[1.660]	[2.060]	[1.900]	[1.500]	26	2-5499141-6
BLUE	[1.900]	[1.360]	[1.360]	[1.760]	[1.600]	[1.200]	20	2-5499141-4
BLUE	[1.700]	[1.160]	[1.160]	[1.560]	[1.400]	[1.000]	16	2-5499141-3
BLUE	[1.600]	[1.060]	[1.060]	[1.460]	[1.300]	[.900]	14	2-5499141-2
BLUE	[1.400]	[.860]	[.860]	[1.260]	[1.100]	[.700]	10	2-5499141-1
BLACK	[3.100]	[3.560]	[3.560]	[3.960]	[3.800]	[3.400]	64	1-5499141-2
BLACK	[2.900]	[3.360]	[3.360]	[3.760]	[3.600]	[3.200]	60	1-5499141-1
BLACK	[2.400]	[2.860]	[2.860]	[3.260]	[3.100]	[2.700]	50	1-5499141-0
BLACK	[1.900]	[2.360]	[2.360]	[2.760]	[2.600]	[2.200]	40	5499141-9
BLACK	[1.600]	[2.060]	[2.060]	[2.460]	[2.300]	[1.900]	34	5499141-8
BLACK	[1.400]	[1.860]	[1.860]	[2.260]	[2.100]	[1.700]	30	5499141-7
BLACK	[1.200]	[1.660]	[1.660]	[2.060]	[1.900]	[1.500]	26	5499141-6
BLACK	[1.100]	[1.560]	[1.560]	[1.960]	[1.800]	[1.400]	24	5499141-5
BLACK	[.900]	[1.360]	[1.360]	[1.760]	[1.600]	[1.200]	20	5499141-4
BLACK	[.700]	[1.160]	[1.160]	[1.560]	[1.400]	[1.000]	16	5499141-3
BLACK	[.600]	[1.060]	[1.060]	[1.460]	[1.300]	[.900]	14	5499141-2
BLACK	[.400]	[.860]	[.860]	[1.260]	[1.100]	[.700]	10	5499141-1
HOUSING AND LATCHES COLOR	F	E	D	C	B	A	NO OF POSN	PART NUMBER

THIS DRAWING IS A CONTROLLED DOCUMENT. UNLESS INDICATED OTHERWISE, ALL DIMENSIONS ARE IN MILLIMETERS.

UNLESS OTHERWISE SPECIFIED, THE FOLLOWING APPLIES TO ALL DIMENSIONS:

FINISH	AS SHOWN
TOLERANCES	AS SHOWN
THREADS	AS SHOWN
PLATING	AS SHOWN
WELDING	AS SHOWN
SPRINGS	AS SHOWN
COATINGS	AS SHOWN
OTHER	AS SHOWN

DATE: 01-27-01
 BY: M. WILMSLEY
 CHECKED: M. WILMSLEY
 APPROVED: M. WILMSLEY

108-40018

TE Connectivity
 HEADER ASSY, UNIVERSAL AMP-LATCH

SIZE: A1
 DATE: 01-27-01
 DRAWING NO: 108-40018
 REVISED TO: 108-40018

CUSTOMER DRAWING