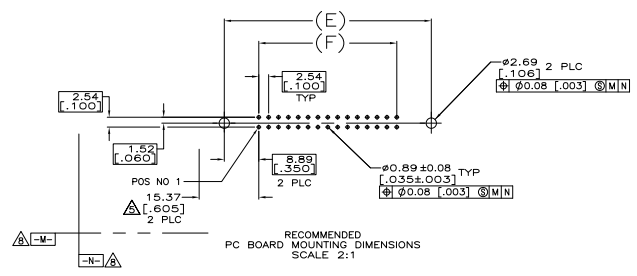
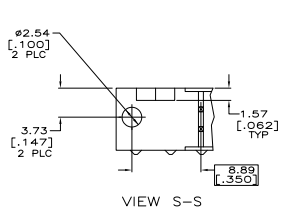
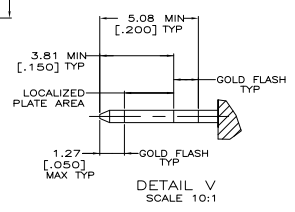
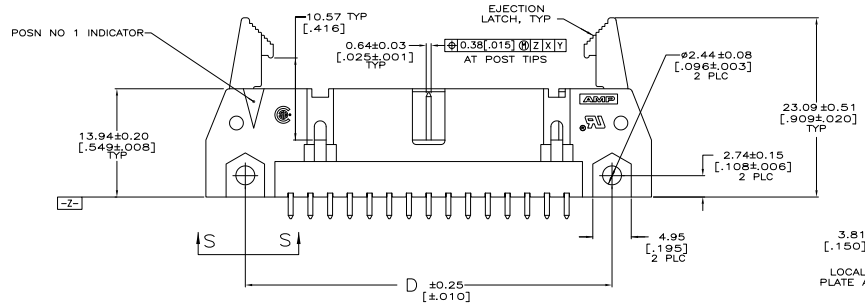
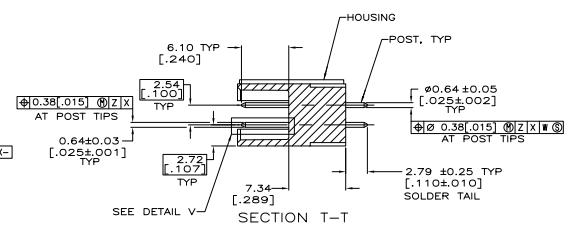
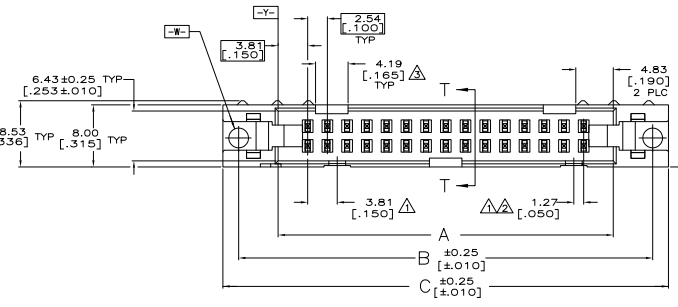


EJECTION LATCHES OMITTED IN THIS VIEW FOR CLARITY



SEE SHEET 2 FOR TABLE & NOTES

THIS DRAWING IS A CONTROLLED DOCUMENT.		REV. 01	DATE 01-27-01	TE TE Connectivity
UNPUBLISHED		REV. 02	DATE 01-27-01	
DESIGNED BY	APPROVED BY	REV. 03	DATE 01-27-01	HEADER ASSY, UNIVERSAL AMP-LATCH
REV. 04	DATE 01-27-01	REV. 05	DATE 01-27-01	
REV. 06	DATE 01-27-01	REV. 07	DATE 01-27-01	SIZE A1
REV. 08	DATE 01-27-01	REV. 09	DATE 01-27-01	DATE 01-27-01
REV. 10	DATE 01-27-01	REV. 11	DATE 01-27-01	REVISED TO
REV. 12	DATE 01-27-01	REV. 13	DATE 01-27-01	REVISED TO
REV. 14	DATE 01-27-01	REV. 15	DATE 01-27-01	REVISED TO
REV. 16	DATE 01-27-01	REV. 17	DATE 01-27-01	REVISED TO
REV. 18	DATE 01-27-01	REV. 19	DATE 01-27-01	REVISED TO
REV. 20	DATE 01-27-01	REV. 21	DATE 01-27-01	REVISED TO
REV. 22	DATE 01-27-01	REV. 23	DATE 01-27-01	REVISED TO
REV. 24	DATE 01-27-01	REV. 25	DATE 01-27-01	REVISED TO
REV. 26	DATE 01-27-01	REV. 27	DATE 01-27-01	REVISED TO
REV. 28	DATE 01-27-01	REV. 29	DATE 01-27-01	REVISED TO
REV. 30	DATE 01-27-01	REV. 31	DATE 01-27-01	REVISED TO
REV. 32	DATE 01-27-01	REV. 33	DATE 01-27-01	REVISED TO
REV. 34	DATE 01-27-01	REV. 35	DATE 01-27-01	REVISED TO
REV. 36	DATE 01-27-01	REV. 37	DATE 01-27-01	REVISED TO
REV. 38	DATE 01-27-01	REV. 39	DATE 01-27-01	REVISED TO
REV. 40	DATE 01-27-01	REV. 41	DATE 01-27-01	REVISED TO
REV. 42	DATE 01-27-01	REV. 43	DATE 01-27-01	REVISED TO
REV. 44	DATE 01-27-01	REV. 45	DATE 01-27-01	REVISED TO
REV. 46	DATE 01-27-01	REV. 47	DATE 01-27-01	REVISED TO
REV. 48	DATE 01-27-01	REV. 49	DATE 01-27-01	REVISED TO
REV. 50	DATE 01-27-01	REV. 51	DATE 01-27-01	REVISED TO
REV. 52	DATE 01-27-01	REV. 53	DATE 01-27-01	REVISED TO
REV. 54	DATE 01-27-01	REV. 55	DATE 01-27-01	REVISED TO
REV. 56	DATE 01-27-01	REV. 57	DATE 01-27-01	REVISED TO
REV. 58	DATE 01-27-01	REV. 59	DATE 01-27-01	REVISED TO
REV. 60	DATE 01-27-01	REV. 61	DATE 01-27-01	REVISED TO
REV. 62	DATE 01-27-01	REV. 63	DATE 01-27-01	REVISED TO
REV. 64	DATE 01-27-01	REV. 65	DATE 01-27-01	REVISED TO
REV. 66	DATE 01-27-01	REV. 67	DATE 01-27-01	REVISED TO
REV. 68	DATE 01-27-01	REV. 69	DATE 01-27-01	REVISED TO
REV. 70	DATE 01-27-01	REV. 71	DATE 01-27-01	REVISED TO
REV. 72	DATE 01-27-01	REV. 73	DATE 01-27-01	REVISED TO
REV. 74	DATE 01-27-01	REV. 75	DATE 01-27-01	REVISED TO
REV. 76	DATE 01-27-01	REV. 77	DATE 01-27-01	REVISED TO
REV. 78	DATE 01-27-01	REV. 79	DATE 01-27-01	REVISED TO
REV. 80	DATE 01-27-01	REV. 81	DATE 01-27-01	REVISED TO
REV. 82	DATE 01-27-01	REV. 83	DATE 01-27-01	REVISED TO
REV. 84	DATE 01-27-01	REV. 85	DATE 01-27-01	REVISED TO
REV. 86	DATE 01-27-01	REV. 87	DATE 01-27-01	REVISED TO
REV. 88	DATE 01-27-01	REV. 89	DATE 01-27-01	REVISED TO
REV. 90	DATE 01-27-01	REV. 91	DATE 01-27-01	REVISED TO
REV. 92	DATE 01-27-01	REV. 93	DATE 01-27-01	REVISED TO
REV. 94	DATE 01-27-01	REV. 95	DATE 01-27-01	REVISED TO
REV. 96	DATE 01-27-01	REV. 97	DATE 01-27-01	REVISED TO
REV. 98	DATE 01-27-01	REV. 99	DATE 01-27-01	REVISED TO
REV. 100	DATE 01-27-01	REV. 101	DATE 01-27-01	REVISED TO

THIS DRAWING IS UNCLASSIFIED
 ALL RIGHTS RESERVED

REV	DATE	DESCRIPTION	BY	APP
1		SEE SHEET 1		

- ▲ COORDINATE DIMENSION APPLIES FROM BASIC LOCATION.
- ▲ 10 AND 14 POSITION SIZES CONTAIN ONLY ONE SLOT FOR SNAP-IN POLARIZER (MILITARY POLARIZATION) LOCATED AS SHOWN.
- ▲ 10 POSITION SIZES CONTAIN ONLY ONE SLOT FOR DUAL POLARIZATION, LOCATED AS SHOWN.
- 4. RECOMMENDED PRINTED CIRCUIT BOARD THICKNESS IS 1.57 [.062].
- ▲ DISTANCE REQUIRED BY EJECTION LATCHES IN THE OPEN POSITION.
- ▲ HOUSING & LATCHES, GLASS FILLED NYLON OR POLYESTER, UL94V-0 RATED, SEE TABLE FOR COLOR. POSTS: PH BRZ OR BRASS.
- ▲ POSTS: GOLD FLASH OVER PALLADIUM-NICKEL PLATE, 0.76µm[.000030] MIN TOTAL ON THE LOCALIZED PLATE AREA, 2.54µm[.000100] MIN TIN PLATE ON THE SOLDER-TAIL, 1.27µm[.000050] MIN NICKEL UNDERPLATE ON THE ENTIRE POST.
 -OR-
 0.76µm[.000030] MIN GOLD PLATE ON THE LOCALIZED PLATE AREA, 2.54µm[.000100] MIN TIN PLATE ON THE SOLDER-TAIL, 1.27µm[.000050] MIN NICKEL UNDERPLATE ON THE ENTIRE POST.
- ▲ DATUMS -M- & -N- TO BE ESTABLISHED BY CUSTOMER.

		78.74	96.52	90.42	100.58	96.52	86.36	64	3-5499160-2
OBSOLETE	BLUE	[3.100]	[3.800]	[3.560]	[3.960]	[3.800]	[3.400]		
	BLUE	73.66	91.44	85.34	95.50	91.44	81.28	60	3-5499160-1
	BLUE	[2.900]	[3.600]	[3.360]	[3.760]	[3.600]	[3.200]		
	BLUE	60.96	78.74	72.64	82.80	78.74	68.58	50	3-5499160-0
	BLUE	[2.400]	[3.100]	[2.860]	[3.260]	[3.100]	[2.700]		
	BLUE	48.26	66.04	59.94	70.10	66.04	55.88	40	2-5499160-9
	BLUE	[1.900]	[2.600]	[2.360]	[2.760]	[2.600]	[2.200]		
OBSOLETE	BLUE	40.64	58.42	52.32	62.48	58.42	48.26	34	2-5499160-8
	BLUE	[1.600]	[2.300]	[2.060]	[2.460]	[2.300]	[1.900]		
OBSOLETE	BLUE	35.56	53.34	47.24	57.40	53.34	43.18	30	2-5499160-7
	BLUE	[1.400]	[2.100]	[1.860]	[2.260]	[2.100]	[1.700]		
	BLUE	30.48	48.26	42.16	52.32	48.26	38.10	26	2-5499160-6
	BLUE	[1.200]	[1.900]	[1.660]	[2.060]	[1.900]	[1.500]		
	BLUE	22.86	40.64	34.54	44.70	40.64	30.48	20	2-5499160-4
	BLUE	[.900]	[1.600]	[1.360]	[1.760]	[1.600]	[1.200]		
OBSOLETE	BLUE	17.78	35.56	29.46	39.62	35.56	25.40	16	2-5499160-3
	BLUE	[.700]	[1.400]	[1.160]	[1.560]	[1.400]	[1.000]		
	BLUE	15.24	33.02	26.92	37.08	33.02	22.86	14	2-5499160-2
	BLUE	[.600]	[1.300]	[1.060]	[1.460]	[1.300]	[.900]		
	BLUE	10.16	27.94	21.84	32.00	27.94	17.78	10	2-5499160-1
	BLUE	[.400]	[1.100]	[.860]	[1.260]	[1.100]	[.700]		
	BLACK	78.74	96.52	90.42	100.58	96.52	86.36	64	1-5499160-2
	BLACK	[3.100]	[3.800]	[3.560]	[3.960]	[3.800]	[3.400]		
OBSOLETE	BLACK	73.66	91.44	85.34	95.50	91.44	81.28	60	1-5499160-1
	BLACK	[2.900]	[3.600]	[3.360]	[3.760]	[3.600]	[3.200]		
	BLACK	60.96	78.74	72.64	82.80	78.74	68.58	50	1-5499160-0
	BLACK	[2.400]	[3.100]	[2.860]	[3.260]	[3.100]	[2.700]		
	BLACK	48.26	66.04	59.94	70.10	66.04	55.88	40	5499160-9
	BLACK	[1.900]	[2.600]	[2.360]	[2.760]	[2.600]	[2.200]		
	BLACK	40.64	58.42	52.32	62.48	58.42	48.26	34	5499160-8
	BLACK	[1.600]	[2.300]	[2.060]	[2.460]	[2.300]	[1.900]		
OBSOLETE	BLACK	35.56	53.34	47.24	57.40	53.34	43.18	30	5499160-7
	BLACK	[1.400]	[2.100]	[1.860]	[2.260]	[2.100]	[1.700]		
	BLACK	30.48	48.26	42.16	52.32	48.26	38.10	26	5499160-6
	BLACK	[1.200]	[1.900]	[1.660]	[2.060]	[1.900]	[1.500]		
OBSOLETE	BLACK	27.94	45.72	39.62	49.78	45.72	35.56	24	5499160-5
	BLACK	[1.100]	[1.800]	[1.560]	[1.960]	[1.800]	[1.400]		
	BLACK	22.86	40.64	34.54	44.70	40.64	30.48	20	5499160-4
	BLACK	[.900]	[1.600]	[1.360]	[1.760]	[1.600]	[1.200]		
	BLACK	17.78	35.56	29.46	39.62	35.56	25.40	16	5499160-3
	BLACK	[.700]	[1.400]	[1.160]	[1.560]	[1.400]	[1.000]		
	BLACK	15.24	33.02	26.92	37.08	33.02	22.86	14	5499160-2
	BLACK	[.600]	[1.300]	[1.060]	[1.460]	[1.300]	[.900]		
	BLACK	10.16	27.94	21.84	32.00	27.94	17.78	10	5499160-1
	BLACK	[.400]	[1.100]	[.860]	[1.260]	[1.100]	[.700]		
HOUSING AND LATCHES COLOR		F	E	D	C	B	A	NO OF POSN	PART NUMBER

486 (24/1)

THIS DRAWING IS A CONTROLLED DOCUMENT. UNCLASSIFIED - DATE 07-31-2019 BY: S0153-002

TE Connectivity
 Header Assy, Universal AMP-LATCH
 PART NUMBER: 108-40018
 REV: 1
 DATE: 10/27/19
 CUSTOMER DRAWING: A100779
 SHEET 1 OF 2