

4

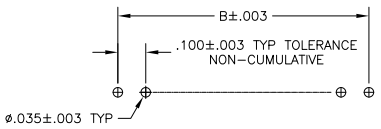
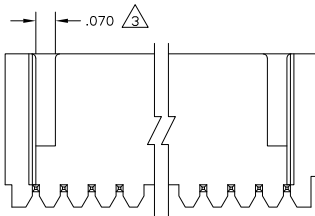
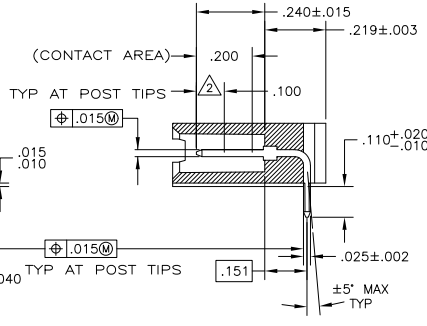
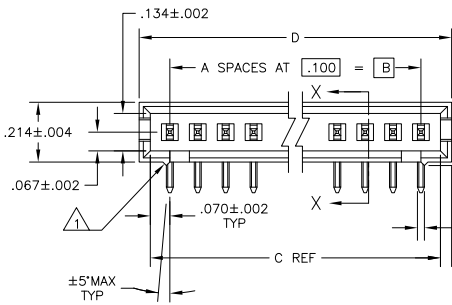
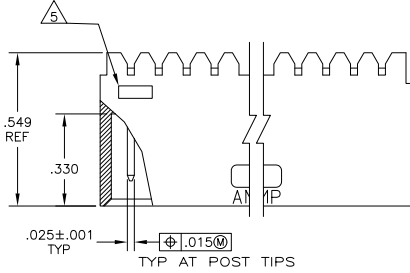
3

2

1

THIS DRAWING IS UNPUBLISHED. RELEASED FOR PUBLICATION. ALL RIGHTS RESERVED.

LOC	DIST	REVISIONS		
P	LTR	DESCRIPTION	DATE	BY
AD	00	V2	REVISED PER ECO-11-004587	11MAR11 RK HMR



- 1 STANDOFFS: UP TO 9 POS-(2 REQD) ON THE OUTSIDE ENDS OF THE HOUSING 10 TO 19 POS-(3 REQD) TWO ON THE OUTSIDE ENDS AND ONE CENTERED ON THE HOUSING. 19 POS AND LARGER-(4 REQD) TWO ON THE OUTSIDE ENDS AND TWO SPACED EVENLY WITHIN THE REMAINING LENGTH OF THE HOUSING.
- 2 POINT OF MEASUREMENT FOR PLATING THICKNESS.
- 3 FOR 3 POS (3--4 & 3--9 ONLY) ONE SLOT, .215 WIDE.
- 4 INDICATED PARTS ARE PACKAGED IN "GANG-OF-TUBES".
- 5 RECESSED DATE CODE
- 6 INDICATED PARTS ARE PACKAGED IN "SINGLE TUBES".
- 7 .000015 GOLD ON THE CONTACT AREA, .000100-.000200 MATTE TIN-LEAD ON THE SOLDERTAIL, ALL OVER .000050 NICKEL.
- 8 .000015 GOLD ON THE CONTACT AREA, .000100-.000200 MATTE TIN ON THE SOLDERTAIL, ALL OVER .000050 NICKEL.
- 9 PRELIMINARY PART
- 10 OBSOLETE PARTS: OBSOLETE CIS STREAMLINING PER D.RENAUD/D.SINISI

THIS DRAWING IS A CONTROLLED DOCUMENT.		DRN	11JUN85		TE Connectivity
DIMENSIONS: INCHES		DR	11JUN85		
TOLERANCES UNLESS OTHERWISE SPECIFIED:		CHK	11JUN85	ASSEMBLY, MOD II, HEADER, SINGLE ROW	
0 PLC ± .005		APP		.100 C/L, RIGHT ANGLE, WITH .025 SQ POST	
1 PLC ± .005		PRD		APPLICATION SPEC	
2 PLC ± .005		WGT		SIZE	
3 PLC ± .005		FIN		CAGE CODE	
4 PLC ± .005		FIN		DRAWING NO	
ANGLES ± .5		FIN		A2 00779 C=102203	
FINISH: SEE TABLE		FIN		RESTRICTED TO	
MATERIAL: RETARDANT THERMOPLASTIC, SOLDER-BRANCH, POSTS-PAGE 8 BRONZE		FIN		CUSTOMER DRAWING	
		FIN		SCALE: 4:1 SHEET: 1 of 2 REV: V2	

1471-9 (3/11)

102203

A

