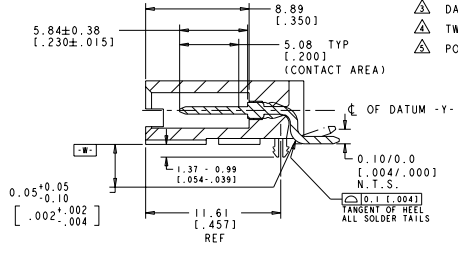
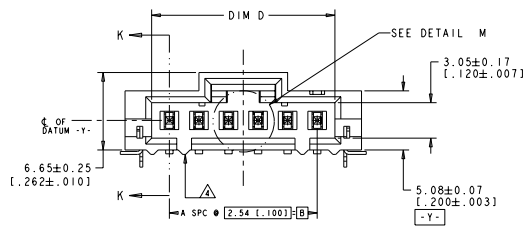
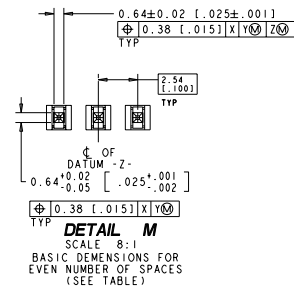
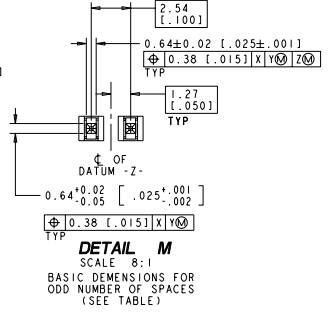
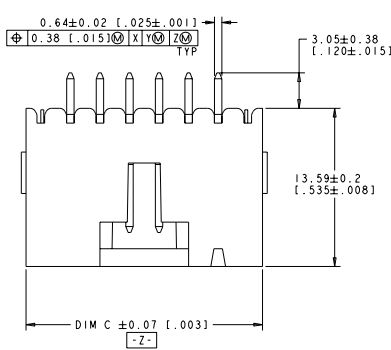
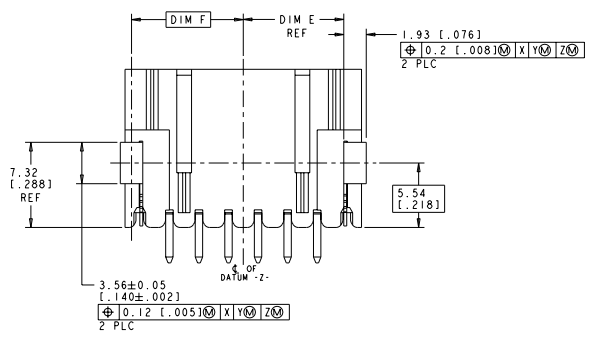


REV	DATE	DESCRIPTION	BY	CHK	APP
K1		REVISED PER ECO-11-004820			



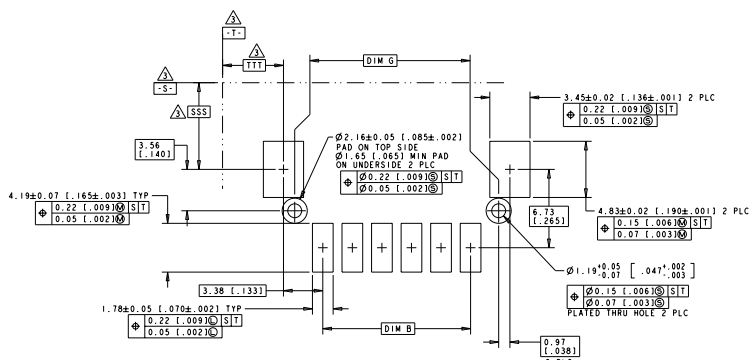
- △ HOUSING: HIGH TEMPERATURE THERMOPLASTIC, COLOR-BLACK. POST: BRASS.
- △ POST: 0.000381 [0.000015] MIN GOLD ON THE CONTACT AREA, 0.00254-0.00508 [0.000100-.000200] MIN MATTE TIN-LEAD ON THE SOLDER TAILS, ALL OVER 0.00127 [0.000050] NICKEL.
- △ DATUMS AND BASIC DIMENSIONS ESTABLISHED BY THE CUSTOMER.
- △ TWO POLARIZATION SLOTS ON ASSEMBLIES WITH FOUR OR MORE POSITIONS.
- △ POST: 0.000381 [0.000015] MIN GOLD ON THE CONTACT AREA, 0.00254-0.00508 [0.000100-.000200] MIN MATTE TIN ON THE SOLDER TAILS, ALL OVER 0.00127 [0.000050] NICKEL.



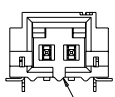
SEE TABLE ON SHEET #3 & #4

THIS DRAWING IS A CONTROLLED DOCUMENT.		BY	DATE	BY	DATE	TE Connectivity	
DESIGNED BY	DATE	BY	DATE	BY	DATE	HEADER ASSEMBLY, LATCHING, RIGHT ANGLE SURFACE MOUNT, MTE, AMPRODU	
DRAWN BY	DATE	BY	DATE	BY	DATE	STATE	SCALE CODE
CHECKED BY	DATE	BY	DATE	BY	DATE	A	00779-14728
APPROVED BY	DATE	BY	DATE	BY	DATE	CUSTOMER DRAWING	

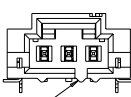
REV. NO.		REVISIONS	
DATE	BY	DESCRIPTION	APP'D.
00	00	SEE SHEET 1	



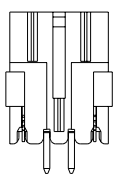
RECOMMENDED PC BOARD LAYOUT



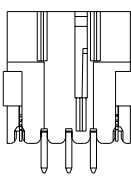
POLARIZATION SLOT FOR TWO POSITION



POLARIZING SLOT FOR THREE POSITION



147278-1



147278-2

THIS DRAWING IS A CONTROLLED DOCUMENT.		BY: <b>ALTBACHER</b> DTAPERS	TE Connectivity HEADER ASSEMBLY, LATCHING, RIGHT ANGLE SURFACE MOUNT, MTE, AMPFOU
DATE: 00/00/00	BY: <b>CHANG</b> DTAPERS	DATE: 00/00/00	
SCALE: 1:1	APP'D.:	APP'D.:	STATE: CA
MATERIAL:	PRICE:	CUSTOMER DRAWING:	STATE: CA PART NO: 147278 PART NO: 147278 SHEET 2 OF 4

8 7 6 5 4 3 2 1

FILE NUMBER TO IMPROVE REVISIONS FOR PUBLICATION ALL RIGHTS RESERVED

REV	DATE	DESCRIPTION	BY	CHK
00		SEE SHEET 1		

△	88	65.79 [2.590]	33.73 [1.328]	32.77 [1.290]	64.01 [2.520]	68.58 [2.700]	60.96 [2.400]	24	25	2-147278-4
△	88	63.25 [2.490]	32.46 [1.278]	31.50 [1.240]	61.47 [2.420]	66.04 [2.600]	58.42 [2.300]	23	24	2-147278-3
△	88	60.71 [2.390]	31.19 [1.228]	30.23 [1.190]	58.93 [2.320]	63.50 [2.500]	55.88 [2.200]	22	23	2-147278-2
△	88	58.17 [2.290]	29.92 [1.178]	28.96 [1.140]	56.39 [2.220]	60.96 [2.400]	53.34 [2.100]	21	22	2-147278-1
△	88	55.63 [2.190]	28.65 [1.128]	27.69 [1.090]	53.85 [2.120]	58.42 [2.300]	50.80 [2.000]	20	21	2-147278-0
△	72	53.09 [2.090]	27.38 [1.078]	26.42 [1.040]	51.31 [2.020]	55.88 [2.200]	48.26 [1.900]	19	20	1-147278-9
△	72	50.55 [1.990]	26.11 [1.028]	25.15 [1.000]	48.77 [1.920]	53.34 [2.100]	45.72 [1.800]	18	19	1-147278-8
△	72	48.01 [1.890]	24.84 [1.978]	23.88 [1.940]	46.23 [1.820]	50.80 [2.000]	43.18 [1.700]	17	18	1-147278-7
△	72	45.47 [1.790]	23.57 [1.928]	22.61 [1.890]	43.69 [1.720]	48.26 [1.900]	40.64 [1.600]	16	17	1-147278-6
△	72	42.93 [1.690]	22.30 [1.878]	21.34 [1.840]	41.15 [1.620]	45.72 [1.800]	38.10 [1.500]	15	16	1-147278-5
△	72	40.39 [1.590]	21.03 [1.828]	20.07 [1.790]	38.61 [1.520]	43.18 [1.700]	35.56 [1.400]	14	15	1-147278-4
△	56	37.85 [1.490]	19.76 [1.778]	18.80 [1.740]	36.07 [1.420]	40.64 [1.600]	33.02 [1.300]	13	14	1-147278-3
△	56	35.31 [1.390]	18.49 [1.728]	17.53 [1.690]	33.53 [1.320]	38.10 [1.500]	30.48 [1.200]	12	13	1-147278-2
△	56	32.77 [1.290]	17.22 [1.678]	16.26 [1.640]	30.99 [1.220]	35.56 [1.400]	27.94 [1.100]	11	12	1-147278-1
△	56	30.23 [1.190]	15.95 [1.628]	14.99 [1.590]	28.45 [1.120]	33.02 [1.300]	25.40 [1.000]	10	11	1-147278-0
△	44	27.69 [1.090]	14.68 [1.578]	13.72 [1.540]	25.91 [1.020]	30.48 [1.200]	22.86 [1.000]	9	10	147278-9
△	44	25.15 [1.000]	13.41 [1.528]	12.45 [1.490]	23.37 [1.020]	27.94 [1.100]	20.32 [1.000]	8	9	147278-8
△	44	22.61 [1.000]	12.14 [1.478]	11.18 [1.440]	20.83 [1.020]	25.40 [1.000]	17.78 [1.000]	7	8	147278-7
△	44	20.07 [1.000]	10.87 [1.428]	9.91 [1.390]	18.29 [1.000]	22.86 [1.000]	15.24 [1.000]	6	7	147278-6
△	44	17.53 [1.000]	9.60 [1.378]	8.64 [1.340]	15.75 [1.000]	20.32 [1.000]	12.70 [1.000]	5	6	147278-5
△	32	14.99 [1.000]	8.33 [1.328]	7.37 [1.290]	13.21 [1.000]	17.78 [1.000]	10.16 [1.000]	4	5	147278-4
△	24	12.45 [1.000]	7.06 [1.278]	6.10 [1.240]	10.67 [1.000]	15.24 [1.000]	7.62 [1.000]	3	4	147278-3
△	24	9.91 [1.000]	5.79 [1.228]	4.83 [1.190]	8.13 [1.000]	12.70 [1.000]	5.08 [1.000]	2	3	147278-2
△	24	7.37 [1.000]	4.52 [1.178]	3.56 [1.140]	5.59 [1.000]	10.16 [1.000]	2.54 [1.000]	1	2	147278-1
PLATING	EIA 481 TAPE WIDTH mm	G	F	E	D	C	B	A	NO OF POSN	PART NUMBER

THIS DRAWING IS A CONTROLLED DOCUMENT.

DESIGNED BY	DATE	BY	DATE	BY	DATE
CHKD BY	DATE	CHKD BY	DATE	CHKD BY	DATE
APPROVED BY	DATE	APPROVED BY	DATE	APPROVED BY	DATE

TE Connectivity

HEADER ASSEMBLY, LATCHING, RIGHT ANGLE SURFACE MOUNT, MTE, AMPHOUS

STATE CASE CODE DRAWING NO. PART NUMBER TO

A 00779 147278

CUSTOMER DRAWING

SHEET 6 OF 3

REV	DATE	REVISIONS
AD	00	SEE SHEET 1

△	88	65.79 [2.590]	33.73 [1.328]	32.77 [1.290]	64.01 [2.520]	68.58 [2.700]	60.96 [2.400]	24	25	7-147278-4
△	88	63.25 [2.490]	32.46 [1.278]	31.50 [1.240]	61.47 [2.420]	66.04 [2.600]	58.42 [2.300]	23	24	7-147278-3
△	88	60.71 [2.390]	31.19 [1.228]	30.23 [1.190]	58.93 [2.320]	63.50 [2.500]	55.88 [2.200]	22	23	7-147278-2
△	88	58.17 [2.290]	29.92 [1.178]	28.96 [1.140]	56.39 [2.220]	60.96 [2.400]	53.34 [2.100]	21	22	7-147278-1
△	88	55.63 [2.190]	28.65 [1.128]	27.69 [1.090]	53.85 [2.120]	58.42 [2.300]	50.80 [2.000]	20	21	7-147278-0
△	72	53.09 [2.090]	27.38 [1.078]	26.42 [1.040]	51.31 [2.020]	55.88 [2.200]	48.26 [1.900]	19	20	6-147278-9
△	72	50.55 [1.990]	26.11 [1.028]	25.15 [1.990]	48.77 [1.920]	53.34 [2.100]	45.72 [1.800]	18	19	6-147278-8
△	72	48.01 [1.890]	24.84 [1.978]	23.88 [1.940]	46.23 [1.820]	50.80 [2.000]	43.18 [1.700]	17	18	6-147278-7
△	72	45.47 [1.790]	23.57 [1.928]	22.61 [1.890]	43.69 [1.720]	48.26 [1.900]	40.64 [1.600]	16	17	6-147278-6
△	72	42.93 [1.690]	22.30 [1.878]	21.34 [1.840]	41.15 [1.620]	45.72 [1.800]	38.10 [1.500]	15	16	6-147278-5
△	72	40.39 [1.590]	21.03 [1.828]	20.07 [1.790]	38.61 [1.520]	43.18 [1.700]	35.56 [1.400]	14	15	6-147278-4
△	56	37.85 [1.490]	19.76 [1.778]	18.80 [1.740]	36.07 [1.420]	40.64 [1.600]	33.02 [1.300]	13	14	6-147278-3
△	56	35.31 [1.390]	18.49 [1.728]	17.53 [1.690]	33.53 [1.320]	38.10 [1.500]	30.48 [1.200]	12	13	6-147278-2
△	56	32.77 [1.290]	17.22 [1.678]	16.26 [1.640]	30.99 [1.220]	35.56 [1.400]	27.94 [1.100]	11	12	6-147278-1
△	56	30.23 [1.190]	15.95 [1.628]	14.99 [1.590]	28.45 [1.120]	33.02 [1.300]	25.40 [1.000]	10	11	6-147278-0
△	44	27.69 [1.090]	14.68 [1.578]	13.72 [1.540]	25.91 [1.020]	30.48 [1.200]	22.86 [1.900]	9	10	5-147278-9
△	44	25.15 [1.990]	13.41 [1.528]	12.45 [1.490]	23.37 [1.920]	27.94 [1.100]	20.32 [1.800]	8	9	5-147278-8
△	44	22.61 [1.890]	12.14 [1.478]	11.18 [1.440]	20.83 [1.820]	25.40 [1.000]	17.78 [1.700]	7	8	5-147278-7
△	44	20.07 [1.790]	10.87 [1.428]	9.91 [1.390]	18.29 [1.720]	22.86 [1.900]	15.24 [1.600]	6	7	5-147278-6
△	44	17.53 [1.690]	9.60 [1.378]	8.64 [1.340]	15.75 [1.620]	20.32 [1.800]	12.70 [1.500]	5	6	5-147278-5
△	32	14.99 [1.590]	8.33 [1.328]	7.37 [1.290]	13.21 [1.520]	17.78 [1.700]	10.16 [1.400]	4	5	5-147278-4
△	24	12.45 [1.490]	7.06 [1.278]	6.10 [1.240]	10.67 [1.420]	15.24 [1.600]	7.62 [1.300]	3	4	5-147278-3
△	24	9.91 [1.390]	5.79 [1.228]	4.83 [1.190]	8.13 [1.320]	12.70 [1.500]	5.08 [1.200]	2	3	5-147278-2
△	24	7.37 [1.290]	4.52 [1.178]	3.56 [1.140]	5.59 [1.220]	10.16 [1.400]	2.54 [1.100]	1	2	5-147278-1
PLATING	EIA 481 TAPE WIDTH mm	G	F	E	D	C	B	A	NO OF POSN	PART NUMBER

THIS DRAWING IS A CONTROLLED DOCUMENT.

DESIGNED BY:	APPROVED BY:	DATE:	SCALE:
CHECKED BY:	DATE:	REVISIONS:	
DRAWING TITLE: <b>TE Connectivity</b> <b>HEADER ASSEMBLY, LATCHING, RIGHT ANGLE SURFACE MOUNT, MTE, AMPHOUS</b>			PART NUMBER: <b>00779</b> CUSTOMER DRAWING: <b>147278</b>

FIGURE 6-1