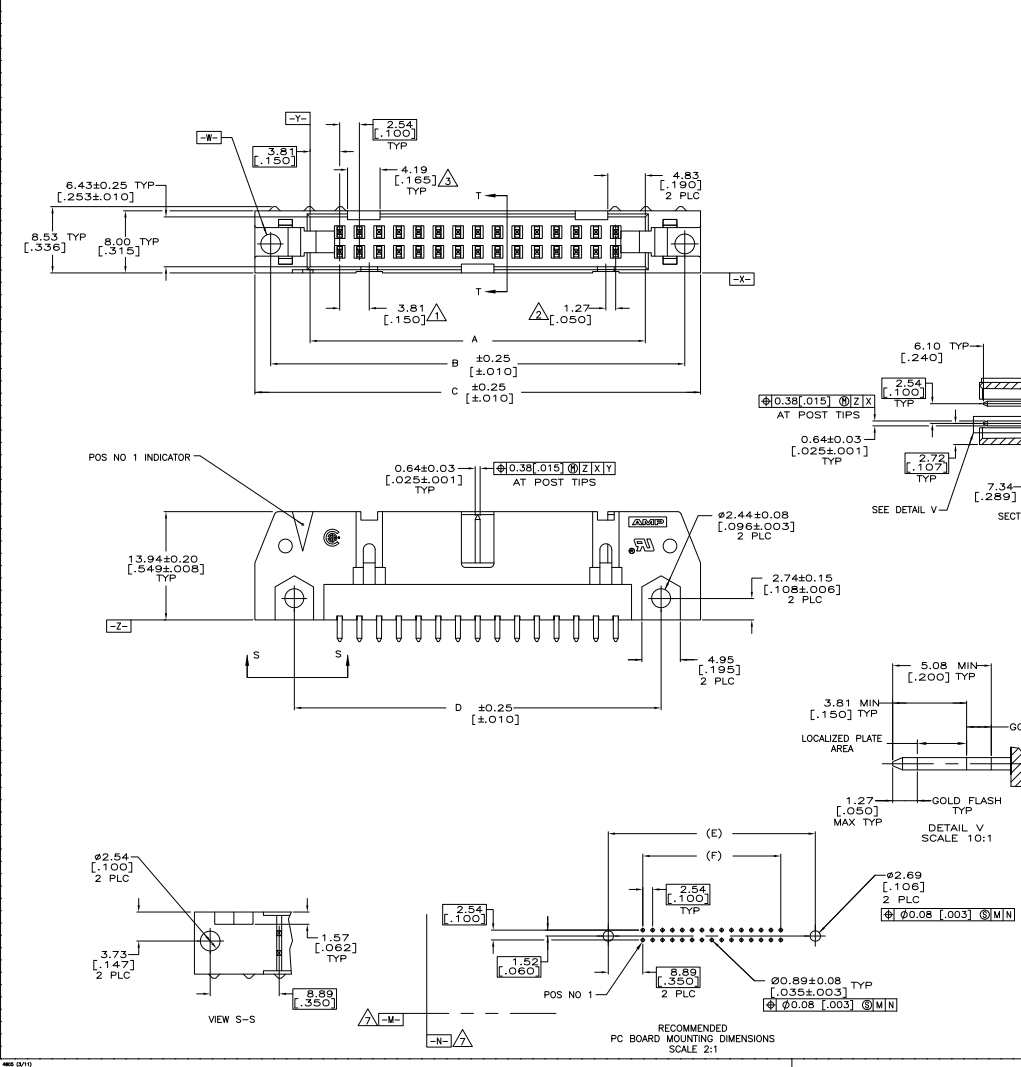


REV	DATE	DESCRIPTION	BY	CHK	APP
00					
01		REVISED PER EDD-11-004835			



- △ COORDINATE DIMENSION APPLIES FROM BASIC LOCATION.
- △ 10 AND 14 POSITION SIZES CONTAIN ONLY ONE SLOT FOR SNAP-IN POLARIZER (MILITARY POLARIZATION) LOCATED AS SHOWN.
- △ 10 POSITION SIZES CONTAIN ONLY ONE SLOT FOR DUAL POLARIZATION, LOCATED AS SHOWN.
- 4. RECOMMENDED PRINTED CIRCUIT BOARD THICKNESS IS 1.57 [0.062].
- △ MATERIALS:
 HOUSING: GLASS FILLED NYLON OR POLYESTER, 94V-0 RATED, BLACK.
 POSTS: PH BRZ OR BRASS
- △ POSTS:
 GOLD FLASH OVER PALLADIUM-NICKEL PLATE, 0.38µm [0.00015] MIN TOTAL ON THE LOCALIZED PLATE AREA,
 2.54µm [0.00100] MIN TIN PLATE ON THE SOLDER-TAILS,
 1.27µm [0.00050] MIN NICKEL UNDERPLATE ON THE ENTIRE POST.
 OR
 0.38µm [0.00015] MIN GOLD PLATE ON THE LOCALIZED PLATE AREA,
 2.54µm [0.00100] MIN TIN PLATE ON THE SOLDER-TAILS,
 1.27µm [0.00050] MIN NICKEL UNDERPLATE ON THE ENTIRE POST.
- △ DATUMS -M- & -N- TO BE ESTABLISHED BY CUSTOMER.

53.34	71.12	65.02	75.18	71.12	60.96	44	1-5102153-3
2.100	2.800	2.560	2.960	2.800	2.400	64	1-5102153-2
78.74	96.52	90.42	100.58	96.52	86.36	60	1-5102153-1
3.100	3.800	3.560	3.960	3.800	3.400	60	1-5102153-1
73.66	91.44	85.34	95.50	91.44	81.28	50	1-5102153-0
2.900	3.600	3.360	3.760	3.600	3.200	50	1-5102153-0
60.96	78.74	72.64	82.80	78.74	68.58	40	5102153-9
2.400	3.100	2.860	3.260	3.100	2.700	40	5102153-9
48.26	66.04	59.94	70.10	66.04	55.88	34	5102153-8
1.900	2.600	2.360	2.760	2.600	2.200	34	5102153-8
40.64	58.42	52.32	62.48	58.42	48.26	30	5102153-7
1.600	2.300	2.060	2.460	2.300	1.900	30	5102153-7
35.56	53.34	47.24	57.40	53.34	43.18	26	5102153-6
1.400	2.100	1.860	2.260	2.100	1.700	26	5102153-6
30.48	48.26	42.16	52.32	48.26	38.10	24	5102153-5
1.200	1.900	1.660	2.060	1.900	1.500	24	5102153-5
27.94	45.72	39.62	49.78	45.72	35.56	20	5102153-4
1.100	1.800	1.560	1.960	1.800	1.400	20	5102153-4
22.86	40.64	34.54	44.70	40.64	30.48	16	5102153-3
1.000	1.700	1.460	1.860	1.700	1.300	16	5102153-3
17.78	35.56	29.46	39.62	35.56	25.40	14	5102153-2
1.000	1.700	1.460	1.860	1.700	1.300	14	5102153-2
15.24	33.02	26.92	37.08	33.02	22.86	10	5102153-1
1.000	1.700	1.460	1.860	1.700	1.300	10	5102153-1

THIS DRAWING IS A CONTROLLED DOCUMENT.

REV: 00
 DATE: 108-40018
 BY: M. WILMSELEY
 CHECKED BY: M. WILMSELEY
 APPROVED BY: M. WILMSELEY

TE Connectivity
 HEADER ASSY, UNIVERSAL AMP-LATCH

DATE: 10/27/99
 DRAWING NO: 108-40018
 REV: 00
 PART NO: 5102153

CUSTOMER DRAWING