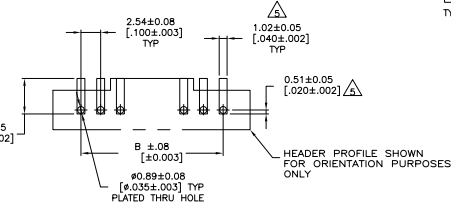
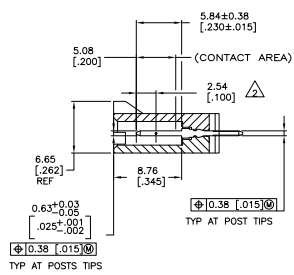
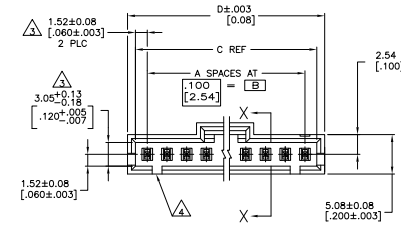
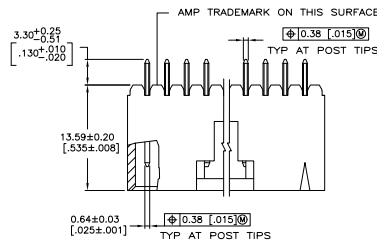


REV	DATE	DESCRIPTION	BY	CHK	APP
AD	00	REVISED PER EDD-11-004587	11MR11	RK	HMR



RECOMMENDED PC BOARD MOUNTING DIMENSIONS  
 RECOMMENDED STENCIL THICKNESS = 0.25 [0.010]

- △ .000015[0.000381] GOLD IN THE CONTACT AREA, .000100-.000200[0.00254-0.00508] MATTE TIN-LEAD ON THE SOLDER TAIL, ALL OVER .000050[0.00127] NICKEL.
- △ POINT OF MEASUREMENT FOR PLATING THICKNESS
- △ THE NOTED DIMENSIONS APPLY FROM THE BASIC DIMENSION LINE (NOT THE POST CENTERLINE) TO THE SURFACE INDICATED.
- △ ONE POLARIZATION SLOT FOR 2 AND 3 POSITION ASSEMBLIES ONLY.
- △ DIMENSIONS NOTED ARE FOR SOLDER STENCIL LAYOUT FOR USE WITH .062±.008 THICK PRINTED CIRCUIT BOARDS
- 6. PARTS ARE PACKAGED IN GANG OF TUBES
- △ OBSOLETE PART NO., REFER TO DWG 104910 FOR POS 13 THRU 25
- △ HOUSING: HIGH TEMPERATURE THERMOPLASTIC, COLOR--BLACK.  
POSTS: BRASS.
- △ .000015[0.000381] GOLD IN THE CONTACT AREA, .000100-.000200[0.00254-0.00508] MATTE TIN ON THE SOLDER TAIL, ALL OVER .000050[0.00127] NICKEL.

△	1.300	1.220	1.100	1.1	12	6-104363-1
△	1.200	1.120	1.000	10	11	6-104363-0
△	1.100	1.020	.900	9	10	5-104363-9
△	1.000	.920	.800	8	9	5-104363-8
△	.900	.820	.700	7	8	5-104363-7
△	.800	.720	.600	6	7	5-104363-6
△	.700	.620	.500	5	6	5-104363-5
△	.600	.520	.400	4	5	5-104363-4
△	.500	.420	.300	3	4	5-104363-3
△	.400	.320	.200	2	3	5-104363-2
△	.300	.220	.100	1	2	5-104363-1
△	2.600	2.520	2.400	24	25	2-104363-4
△	2.500	2.420	2.300	23	24	2-104363-3
△	2.400	2.320	2.200	22	23	2-104363-2
△	2.300	2.220	2.100	21	22	2-104363-1
△	2.200	2.120	2.000	20	21	2-104363-0
△	2.100	2.020	1.900	19	20	1-104363-9
△	2.000	1.920	1.800	18	19	1-104363-8
△	1.900	1.820	1.700	17	18	1-104363-7
△	1.800	1.720	1.600	16	17	1-104363-6
△	1.700	1.620	1.500	15	16	1-104363-5
△	1.600	1.520	1.400	14	15	1-104363-4
△	1.500	1.420	1.300	13	14	1-104363-3
△	1.400	1.320	1.200	12	13	1-104363-2
△	1.300	1.220	1.100	11	12	1-104363-1
△	1.200	1.120	1.000	10	11	1-104363-0
△	1.100	1.020	.900	9	10	104363-9
△	1.000	.920	.800	8	9	104363-8
△	.900	.820	.700	7	8	104363-7
△	.800	.720	.600	6	7	104363-6
△	.700	.620	.500	5	6	104363-5
△	.600	.520	.400	4	5	104363-4
△	.500	.420	.300	3	4	104363-3
△	.400	.320	.200	2	3	104363-2
△	.300	.220	.100	1	2	104363-1

PLATING: D C B A NO OF POSN ASSEMBLY PART NUMBER

THIS DRAWING IS A CONTROLLED DOCUMENT. DATE: 11/11/11 BY: C. CLARK

TE Connectivity

PROJECT: HEADERS ASSY, AMPWOOD MTE, VERTICAL, SINGLE ROW, 100 C/L, 0.025 50 POSTS, POLARIZED WITH LATCHING

SIZE: A1

CUSTOMER DRAWING