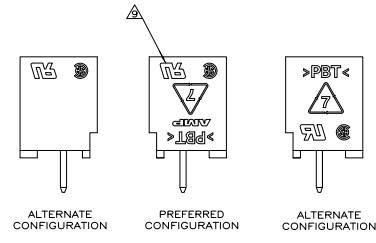
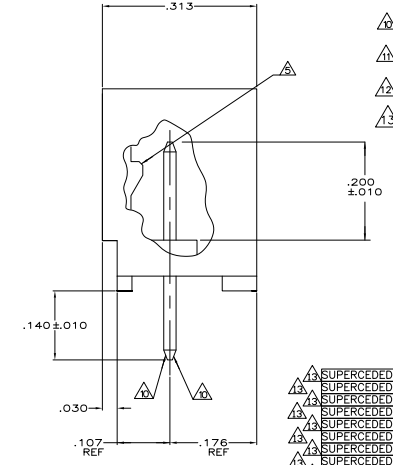
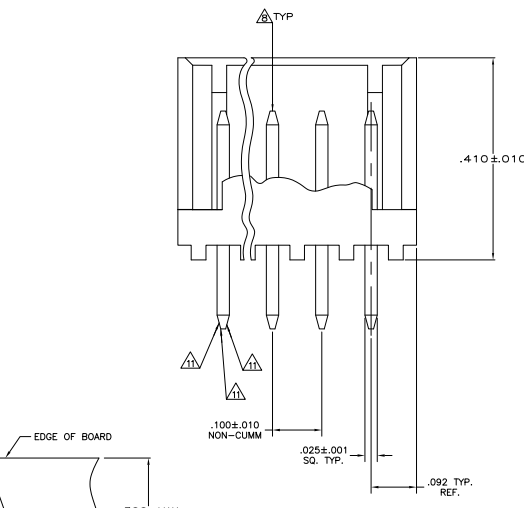
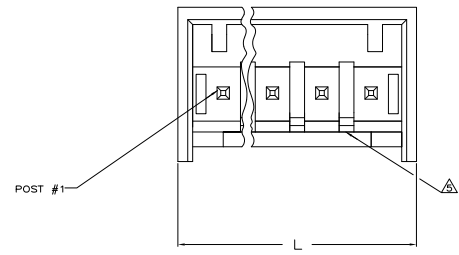


THIS DRAWING IS UNPUBLISHED
 ALL RIGHTS RESERVED

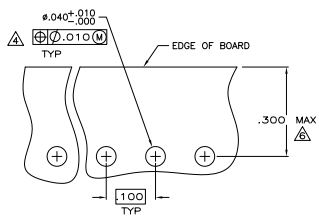
| REV | DATE | DESCRIPTION | BY | CHK | APP |
|-----|------|---------------------------|----|-----|---------------|
| CM | 00 | | | | |
| LT | | REVISED PER EDD-11-004587 | | | 11MM11 RK HMR |



POSSIBLE MARKING CONFIGURATIONS
 SCALE: 5:1



- △ MATERIAL: HEADER - POLYESTER UL94V-0 (BLACK)
 POST - COPPER ALLOY.
- △ SOLDER SIDE OF P.C. BOARD SHOWN.
- 3. PARTS COMPLY WITH AMP SOLDERABILITY SPEC 109-11-2.
- △ ONE HOLE MAY BE UNDERSIZED (.032-.035 DIA) FOR ASSEMBLY RETENTION DURING WAVE SOLDERING.
- △ LATCH DETENT FEATURE OCCURS 2 PLACES ON EACH END (MAXIMUM OF FOUR PER PART) FOR 2 THRU 5 CIRCUIT HEADERS. LATCH FEATURE OCCURS BETWEEN EACH CIRCUIT.
- △ COORDINATE DIMENSION APPLIES FROM CENTER OF ACTUAL FEATURE.
- △ POST: 100% MATTE TIN PLATED.
- △ POST MUST WITHSTAND 3.0 LBS (13 NEWTONS) MIN FORCE WITHOUT DISLODGING, EITHER
- △ UL AND CSA LOGO WILL APPEAR IN THIS AREA. AMP LOGO MAY APPEAR IN THIS AREA OR ON BOTTOM OF PART.
- △ TWO SIDES OF TAPER, AS SHOWN, MUST BE PLATED. TYPICAL, BOTH ENDS.
- △ TWO SIDES OF TAPER, AS SHOWN, AND TIP MAY BE UNPLATED. TYPICAL, BOTH ENDS.
- △ POST: MATTE TIN-LEAD (93/7) PLATED.
- △ OBSOLETE PART NUMBER.



RECOMMENDED MOUNTING HOLE PATTERN
 FOR .063 THK PRINTED CIRCUIT BOARD

| | .035 | 0.89 | .176 | 4.47 | -- | -- |
|--|------|------|------|------|------|-------|
| | .032 | 0.81 | .140 | 3.56 | -- | -- |
| | .030 | 0.76 | .107 | 2.72 | -- | -- |
| | .025 | 0.64 | .100 | 2.54 | -- | -- |
| | .010 | 0.25 | .092 | 2.34 | .410 | 10.41 |
| | .005 | 0.13 | .063 | 1.6 | .313 | 7.95 |
| | .001 | 0.03 | .050 | 1.27 | .300 | 7.62 |
| | .000 | 0 | .040 | 1.02 | .200 | 5.08 |
| | IN | MM | IN | MM | IN | MM |

CONVERSION TABLE

| YES | NO | LEADFREE | FINISH | IN | MM | NO OF POSITIONS | PART NUMBER |
|-----|----|----------|--------|----|----|-----------------|-------------|
| △ | △ | | | | | | |
| | | L | | | | HEADER ASSEMBLY | |

| | | | |
|-------|-------|----|------------|
| 1.484 | 37.69 | 14 | 3-644861-4 |
| 1.384 | 35.15 | 13 | 3-644861-3 |
| 1.284 | 32.61 | 12 | 3-644861-2 |
| 1.184 | 30.07 | 11 | 3-644861-1 |
| 1.084 | 27.53 | 10 | 3-644861-0 |
| .984 | 24.99 | 9 | 2-644861-9 |
| .884 | 22.45 | 8 | 2-644861-8 |
| .784 | 19.91 | 7 | 2-644861-7 |
| .684 | 17.37 | 6 | 2-644861-6 |
| .584 | 14.83 | 5 | 2-644861-5 |
| .484 | 12.29 | 4 | 2-644861-4 |
| .384 | 9.75 | 3 | 2-644861-3 |
| .284 | 7.21 | 2 | 2-644861-2 |

- △ SUPERCEDED BY 3-644861-4
- △ SUPERCEDED BY 3-644861-3
- △ SUPERCEDED BY 3-644861-2
- △ SUPERCEDED BY 3-644861-1
- △ SUPERCEDED BY 3-644861-0
- △ SUPERCEDED BY 2-644861-9
- △ SUPERCEDED BY 2-644861-8
- △ SUPERCEDED BY 2-644861-7
- △ SUPERCEDED BY 2-644861-6
- △ SUPERCEDED BY 2-644861-5
- △ SUPERCEDED BY 2-644861-4
- △ SUPERCEDED BY 2-644861-3
- △ SUPERCEDED BY 2-644861-2



THIS DRAWING IS A CONTROLLED DOCUMENT.

DATE: 10/11/01

REVISED PER: EDD-11-004587

MTA-100 SHROUDED HEADER ASSEMBLY, FRICTION LOCK/STRAIGHT POST, TIN OR TIN LEAD PLATED.

Part Number: A100779 (G=644861)

Customer Drawing