

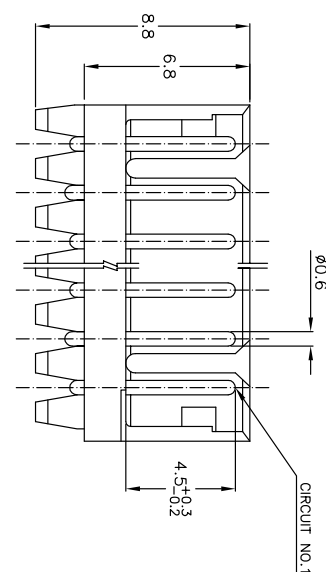
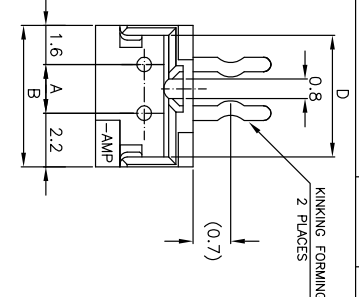
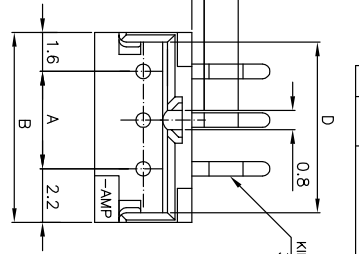
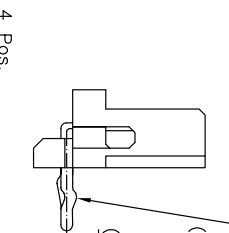
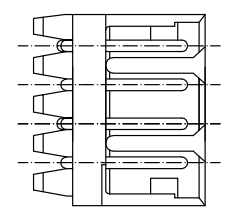
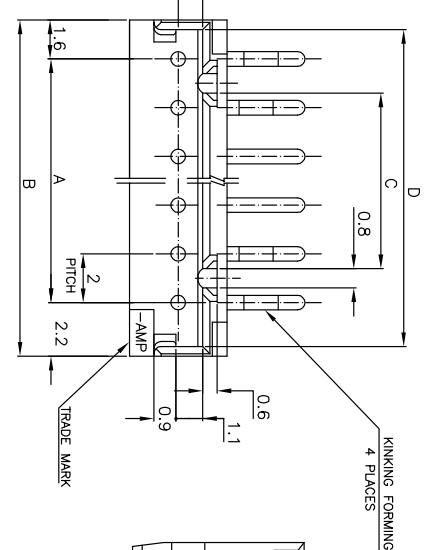
THIS DRAWING IS UNPUBLISHED.
 COPYRIGHT BY TYCO ELECTRONICS CORPORATION. ALL RIGHTS RESERVED.

RELEASED FOR PUBLICATION
 ALL RIGHTS RESERVED.

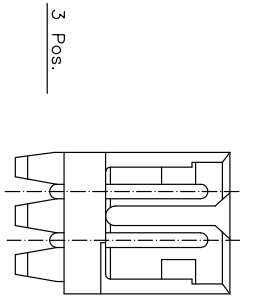
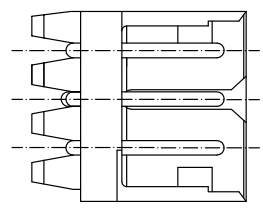
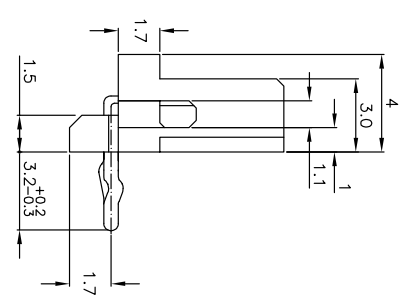
LOC ES 00

DIST 00
 REVISIONS
 DESCRIPTION ECR-07-000873

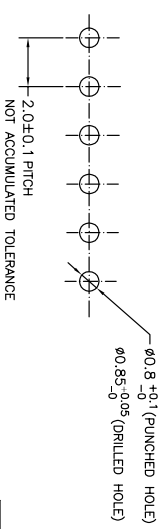
DATE 16JAN07
 DWG C.Z
 APP'D S.Y



5~15 Pos.



- NOTES:
1. MATERIAL: HOUSING - NYLON 66 (UL94V-0)
 POST - TIN BRASS
 APPLICABLE RECEPTACLE P/N 1739777
 2. THIS PART HAS BEEN OBSOLETE.



RECOMMENDABLE PCB LAYOUT
 (PCB THK:0.8-1.6)

TOLERANCES UNLESS OTHERWISE SPECIFIED:
 10% * * >10 : ±0.2
 30% * * >10 : ±0.25
 100% * * >30 : ±0.3
 ANGLE : 5°

THIS DRAWING IS A CONTROLLED DOCUMENT.

DIMENSIONS:	TOLERANCES UNLESS OTHERWISE SPECIFIED:
MM	
0 PLG	±
1 PLG	±
2 PLG	±
3 PLG	±
FINISH	±

DMN S.XU	31JAN03	TYCO Electronics Corporation
CHK S.YAO	31JAN03	SHANGHAI, CHINA
APP'D T. SASAKI	31JAN03	
PRODUCT SPEC	108-60016	POST HEADER ASS'Y HORIZONTAL TYPE (AMP CT CONNECTOR 2mm PITCH)
APPLICATION SPEC		
WEIGHT		
CUSTOMER DRAWING	SIZE A3	DATE CODE 00779
		DRAWING NO. 292253
	SCALE 5:1	SHEET 1 OF 1
		REV A

7-292253-5	6-292253-5	3-292253-5	1-292253-5	15	28	31.8	25.2	31.0
7-4	5-4	3-4	1-4	14	26	29.8	23.2	29.0
7-3	5-3	3-3	1-3	13	24	27.8	21.2	27.0
7-2	5-2	3-2	1-2	12	22	25.8	19.2	25.0
7-1	5-1	3-1	1-1	11	20	23.8	17.2	23.0
7-0	5-0	3-0	1-0	10	18	21.8	15.2	21.0
6-9	4-9	2-9	0-9	9	16	19.8	13.2	19.0
6-8	4-8	2-8	0-8	8	14	17.8	11.2	17.0
6-7	4-7	2-7	0-7	7	12	15.8	9.2	15.0
6-6	4-6	2-6	0-6	6	10	13.8	7.2	13.0
6-5	4-5	2-5	0-5	5	8	11.8	5.2	11.0
6-4	4-4	2-4	0-4	4	6	9.8	3.2	9.0
6-3	4-3	2-3	0-3	3	4	7.8	1.2	7.0
6-2	4-2	2-2	0-2	2	2	5.8	0.2	5.0
6-1	4-1	2-1	0-1	1	1	3.8	0.2	3.0
6-0	4-0	2-0	0-0	0	0	1.8	0.2	1.0
BLACK	YELLOW	BLUE	NATURAL	Pos.	A	B	C	D