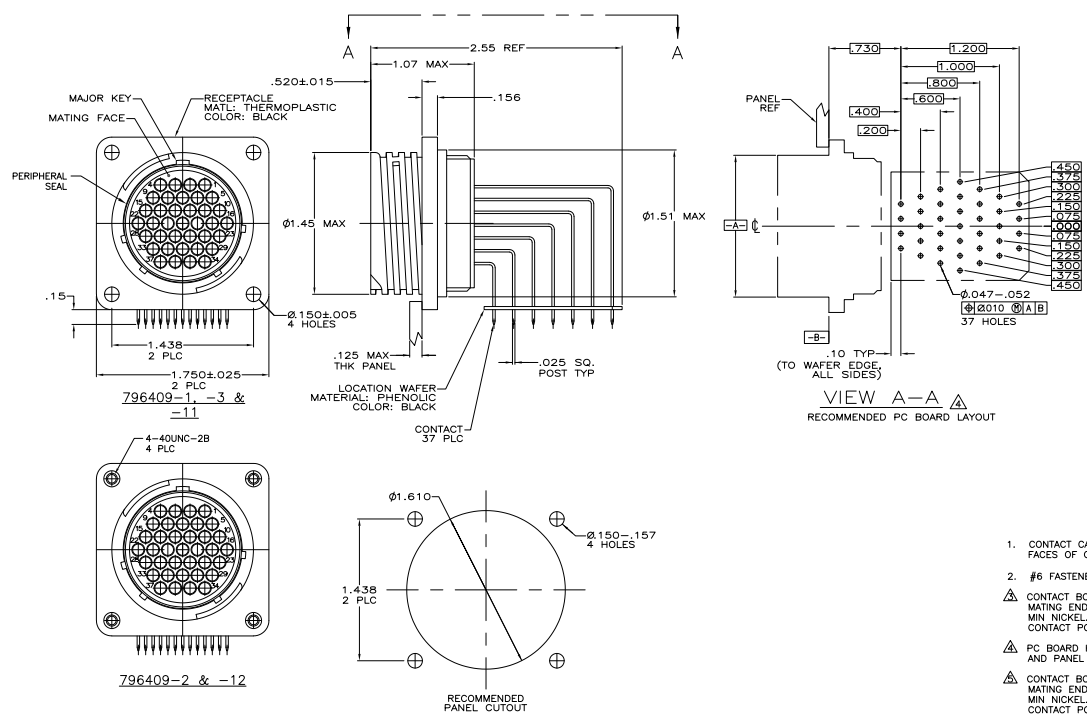


THIS DRAWING IS UNPUBLISHED. REVISIONS FOR VARIATION. ALL RIGHTS RESERVED.

REV	DATE	DESCRIPTION	BY	APP'D
0				
1	11/8/97	REVISED PER ECO-07-028385	SS	SH



- CONTACT CAVITIES IDENTIFIED BY CHARACTERS ON FRONT AND REAR FACES OF CONNECTOR.
- #6 FASTENER RECOMMENDED FOR MOUNTING.
- CONTACT BODY: .000030 MIN GOLD FOR A LENGTH OF .200 MIN FROM MATING END, WITH REMAINDER TO BE GOLD FLASH, BOTH OVER .000050 MIN NICKEL.
CONTACT POST: .000100 MIN TIN-LEAD OVER .000100 MIN COPPER.
- PC BOARD HOLE PATTERN IS DEFINED RELATIVE TO CONNECTOR C.I. AND PANEL MOUNTING FACE INDICATED.
- CONTACT BODY: .000030 MIN GOLD FOR A LENGTH OF .200 MIN FROM MATING END, WITH REMAINDER TO BE GOLD FLASH, BOTH OVER .000050 MIN NICKEL.
CONTACT POST: .000100 MIN TIN OVER .000100 MIN COPPER.

PERIPHERAL SEAL	CONTACT FINISH	THREADED INSERTS	PART NUMBER
NO	△	YES	1-796409-2
NO	△	NO	1-796409-1
YES	△	NO	796409-3
NO	△	YES	796409-2
NO	△	NO	796409-1

THIS DRAWING IS A CONTROLLED DOCUMENT.

DESIGNED BY	DATE	REVISED BY	DATE
CHANG	3-27-97	CHANG	3-27-97

RECEPTACLE ASSY, POSTED, RT ANGLE, RYS SEX, SIZE 23-37, SERIES 1, CPC

SIZE: A1 | 00779 | 796409

CUSTOMER DRAWING