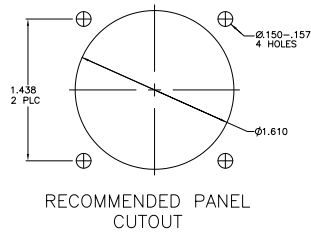
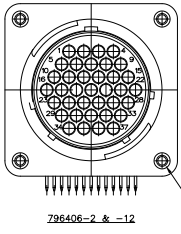
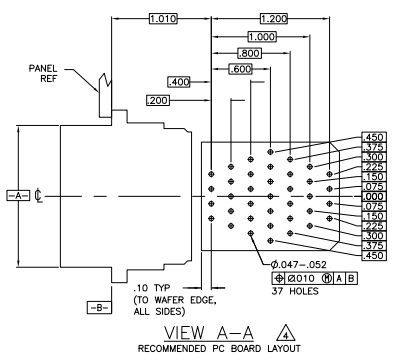
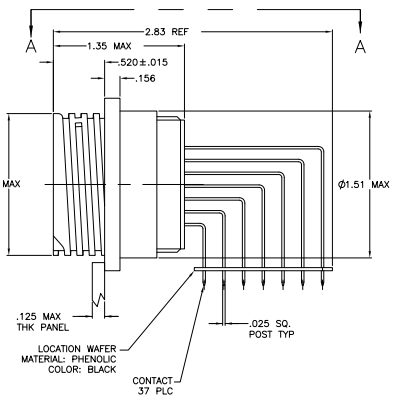
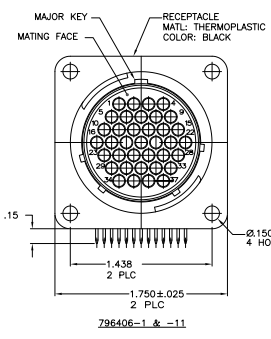


| REVISED PER |                           | DESCRIPTION | DATE    | BY | APP'D |
|-------------|---------------------------|-------------|---------|----|-------|
| CS          | REVISED PER EDD-11-004917 |             | 11MAR11 | RK | HMR   |



- 1 CONTACT CAVITIES IDENTIFIED BY CHARACTERS ON FRONT AND REAR FACES OF CONNECTOR.
- 2 #6 FASTENER RECOMMENDED FOR MOUNTING.
- CONTACT BODY: .000030 MIN GOLD FOR A LENGTH OF .250 MIN FROM MATING END, WITH REMAINDER TO BE GOLD FLASH, BOTH OVER .000050 MIN NICKEL.  
CONTACT POST: .000100 MIN TIN-LEAD OVER .000100 MIN COPPER.
- PC BOARD HOLE PATTERN IS DEFINED RELATIVE TO CONNECTOR C.L. AND PANEL MOUNTING FACE INDICATED.
- CONTACT BODY: .000030 MIN GOLD FOR A LENGTH OF .250 MIN FROM MATING END, WITH REMAINDER TO BE GOLD FLASH, BOTH OVER .000050 MIN NICKEL.  
CONTACT POST: .000100 MIN TIN OVER .000100 MIN COPPER.
- CONTACT BODY: .000100 MIN TIN FOR A LENGTH OF .250 MIN FROM MATING END, OVER .000050 MIN NICKEL.  
CONTACT POST: .000100 MIN TIN OVER .000100 MIN COPPER.
- PIN POSITIONS 2, 6, 10, 17, 23, 29 & 34 VACANT
- PIN POSITIONS 3, 8, 14, 21, 27 & 33 VACANT

| PRELIMINARY | CONTACT FINISH | PERIPHERAL SEAL | THREADED INSERT | PART NUMBER |
|-------------|----------------|-----------------|-----------------|-------------|
| YES         | NO             | NO              | NO              | 1-796406-2  |
| NO          | NO             | NO              | NO              | 1-796406-1  |
| YES         | NO             | NO              | NO              | 796406-5    |
| YES         | NO             | NO              | NO              | 796406-4    |
| NO          | NO             | NO              | NO              | 796406-3    |
| NO          | NO             | YES             | NO              | 796406-2    |
| NO          | NO             | NO              | NO              | 796406-1    |

THIS DRAWING IS A CONTROLLED DOCUMENT. DATE: 3-7-03

DESIGNED BY: J. CHANGIO DATE: 3-3-02

WORKS: M. CHANGIO DATE: 3-4-02

APPROVED BY: J. CHANGIO DATE: 3-4-02

DATE: 3-4-02

SIZE: A1

DATE SIZE: 100779

DRAWING NO: 796406

CUSTOMER DRAWING

TE Connectivity

RECEPTACLE ASSY, POSTED, RT ANGLE, STU SEX, SIZE 23-37, SERIES 1, CPC

REVISIONS: 1

DATE: 11 MAR 2011

BY: RK

APP'D: HMR