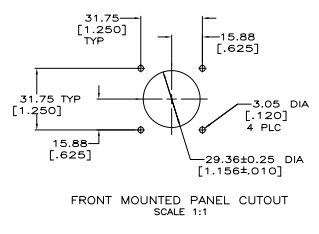
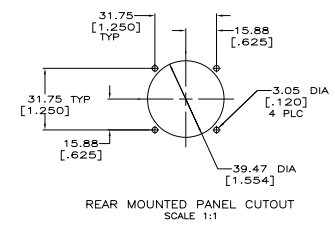
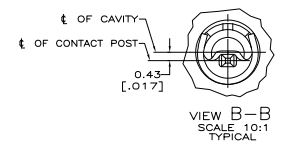
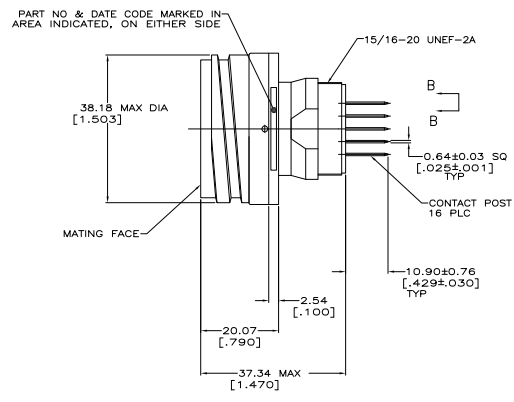
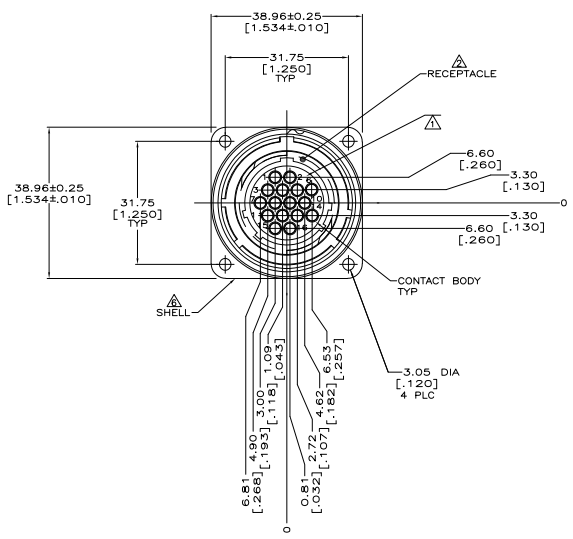


REV	DATE	DESCRIPTION	BY	CHK	APP
0					
B	1/4/97	REVISED PER ECO-07-00208		SS	SH



- △ CAVITY IDENTIFICATION CHARACTERS ON FRONT AND REAR FACE.
- △ NYLON, UL 94V-0 RATED, BLACK.
- △ CONTACT BODY: 0.76um[.000030] MIN GOLD FOR A LENGTH OF 5.08[.200] MIN FROM MATING END, GOLD FLASH ON REMAINDER, BOTH OVER 1.27um[.000050] MIN NICKEL.
- △ CONTACT POST: 2.54um[.000100] MIN TIN-LEAD OVER 2.54um[.000100] MIN COPPER.
- △ CONTACT POST: 2.54um[.000100] MIN TIN OVER 2.54um[.000100] MIN COPPER.
- △ SHELL: 5.08um[.000200] MIN NICKEL OVER 10.16um[.000400] MIN COPPER.
- △ NO CONTACTS IN POSITION 10 AND 11.

POST FINISH	PART NUMBER
△	213734-3
△	213734-2
△	213734-1

THIS DRAWING IS A CONTROLLED DOCUMENT.		DATE	1/4/97	REV	0
DESIGNED BY	APPROVED BY	DATE	1/4/97	REV	0
DRAWN BY	DATE	1/4/97	REV	0	
CHECKED BY	DATE	1/4/97	REV	0	
ISSUED BY	DATE	1/4/97	REV	0	
REVISIONS	DATE	1/4/97	REV	0	
CUSTOMER DRAWING		DATE	1/4/97	REV	0

213734-3  
213734-2  
213734-1

RECEPTACLE ASSEMBLY,  
22-16, STD SEX, CMC

SIZE: 213734  
REV: 0