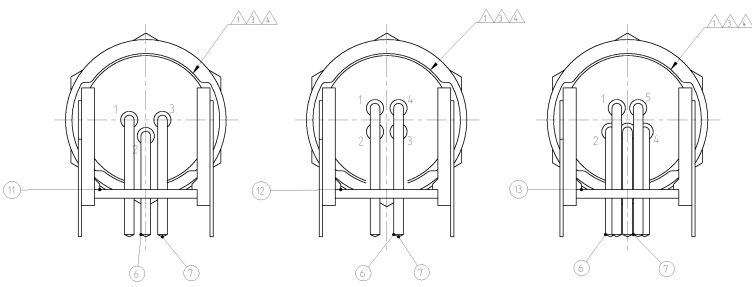


REV. LIST		REVISIONS	
NO.	DATE	NO.	DESCRIPTION
A1	-	1	INITIAL DESIGN
A1	06-04-96-01	2	REVISION

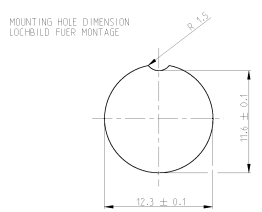
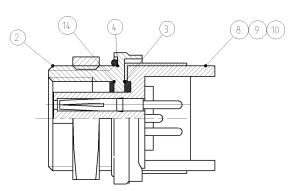
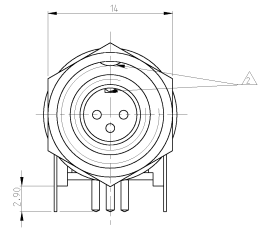
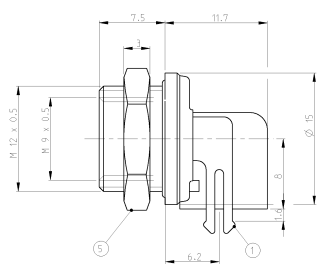
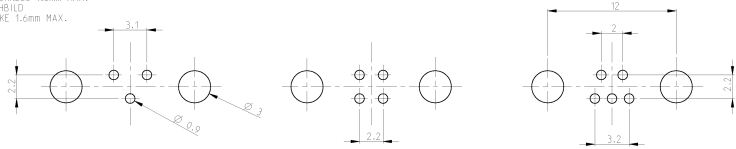
3 WAY
3 POLIG

4 WAY
4 POLIG

5 WAY
5 POLIG



PCB HOLES
PCB THICKNESS 1.6mm MAX.
PCB LOCHHÖHE
PCB DICKE 1.6mm MAX.



TECHNICAL DATA		TECHNISCHE DATEN	
MATERIAL / MATERIAL	PBT, UL-94 V2	GEHÄUSEMATERIAL / GEHÄUSEMATERIAL	CUZN
FINISH / BESICHTIGUNG	TREIBER 4 µm	DRÄHTGRÖSSE / DRAHTGRÖSSE	IN mm ² 0.25
CONTACT RESISTANCE / KONTAKTWIDERSTAND	± 5 mΩ	RATED CURRENT PER CONTACT / NENNSTROM PRO KONTAKT	3 A
CODING / CODIERUNG		SHELL PROTECTION CLASS / SCHUTZKLASSE	IP 65 / DIN 40050
RATED CURRENT PER CONTACT / NENNSTROM PRO KONTAKT	3 A	TERMINATION	SOLDERING / VERBINDUNG: LOETKONTAKTE
SHELL PROTECTION CLASS / SCHUTZKLASSE	IP 65 / DIN 40050	TEST VOLTAGE / PRUEFSPANNUNG	500 VAC
TERMINATION	SOLDERING / VERBINDUNG: LOETKONTAKTE	OPERATING VOLTAGE / BETRIEBSSPANNUNG	60 VAC
TEST VOLTAGE / PRUEFSPANNUNG	500 VAC	OPERATING TEMPERATURE / BETRIEBSTEMPERATUR	-40°C TO +80°C / -40°C BIS +80°C
OPERATING VOLTAGE / BETRIEBSSPANNUNG	60 VAC	MATING CYCLES / STECKZYKLEN	500 MAX.
OPERATING TEMPERATURE / BETRIEBSTEMPERATUR	-40°C TO +80°C / -40°C BIS +80°C		
MATING CYCLES / STECKZYKLEN	500 MAX.		

TYCO-NO./TYCO NR.		DESCRIPTION / BESCHREIBUNG		ITEM-NO. / TEIL-NR.		
6-1437719-0		1	1	1	SEAL / DICHTUNG	14
5-1437719-7		1	1	1	PLATE 5 POS. / PLATTE 5 POL	13
5-1437719-4		1	1	1	PLATE 4 POS. / PLATTE 4 POL	12
		1	1	1	PLATE 3 POS. / PLATTE 3 POL	11
		1	1	1	INSULATION TUBE 5 POS. / ISOLIERHUELSE 5 POL	10
		1	1	1	INSULATION TUBE 4 POS. / ISOLIERHUELSE 4 POL	9
		1	1	1	INSULATION TUBE 3 POS. / ISOLIERHUELSE 3 POL	8
		2	2	2	SOCKET APPLIED BY PRESSURE / BUCHSENKONTAKT EINGEPRESST	7
		3	2	1	SOCKET APPLIED BY PRESSURE / BUCHSENKONTAKT EINGEPRESST	6
		1	1	1	NUT / MUTTER	5
		1	1	1	SEAL / DICHTUNG	4
		1	1	1	SEAL / DICHTUNG	3
		1	1	1	HOUSING / GEHAEUSE	2
		1	1	1	GROUND ON PCB SPRING / VERBINDUNGSFEDER ZUR PCB MASSE	1
		-	-	-	REVISION OF EACH ASSY NO. (WHEN BLANK, USE DWG REV.)	

CATALOG-NO.		DESCRIPTION / BESCHREIBUNG		ITEM-NO. / TEIL-NR.	
T01-0564-S05					
T01-0564-S04					
T01-0564-S03					

MATERIAL		REVISIONS	
1	INITIAL DESIGN	1	INITIAL DESIGN
2	REVISION	2	REVISION

AS SHÜHN
5-1437719-4 WIE GEZEICHNET