

4

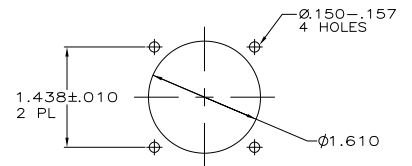
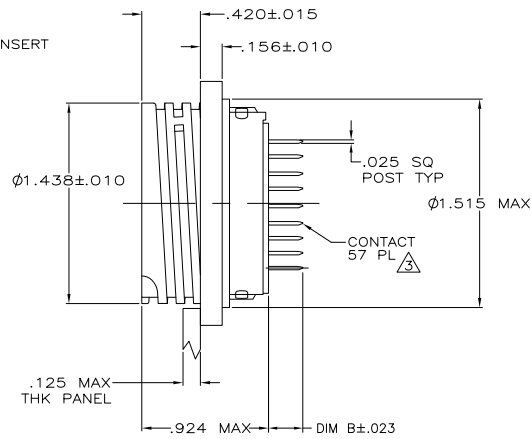
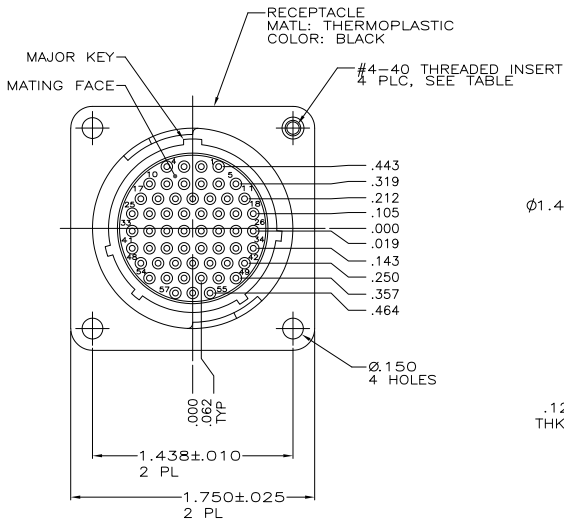
3

2

1

THIS DRAWING IS UNPUBLISHED. RELEASED FOR PUBLICATION  
 © COPYRIGHT BY TYCO ELECTRONICS CORPORATION. ALL RIGHTS RESERVED.

LOC	DIST	REVISIONS					
FT	0	P	LTR	DESCRIPTION	DATE	MIN	APD
		F1		REVISED PER ECO-08-023607	9/22/08	SS	BC



PANEL CUTOUT  
 SCALE: 1:1

- CONTACT CAVITIES IDENTIFIED BY CHARACTERS ON FRONT AND REAR FACES OF CONNECTOR.
- #4 FASTENER RECOMMENDED FOR MOUNTING.
- .000030 MIN GOLD FOR A LENGTH OF .100 MIN FROM MATING END, .000100 MIN TIN-LEAD FOR A LENGTH OF .565 FROM OPPOSITE END, ALL OVER .000050 MIN NICKEL.
- .000030 MIN GOLD FOR A LENGTH OF .100 MIN FROM MATING END, .000100 MIN TIN FOR A LENGTH OF .565 FROM OPPOSITE END, ALL OVER .000050 MIN NICKEL.
- .000001 MIN GOLD FOR A LENGTH OF .100 MIN FROM MATING END, .000100 MIN TIN ON TAIL LENGTH, ALL OVER .000050 MIN NICKEL.
- RECOMMENDED PC BOARD HOLE SIZE FOR CONTACT POST = .041 ± .003 DIA.
- PRELIMINARY PART NUMBER.

.245	△	NO	1-796329-1
.557	△	NO	796329-5
.467	△	NO	796329-4
.245	△	YES	796329-3
.245	△	YES	796329-2
.245	△	NO	796329-1
DIM B	CONTACT FINISH	4-40 THREADED INSERTS	PART NUMBER

THIS DRAWING IS A CONTROLLED DOCUMENT.		DATE	BY	APP'D	REVISED	DESCRIPTION	SCALE	SHEET	OF	REV
DRAWING		1-31-00	HAMMER							
DIMENSIONS:		2-1-00	CHACKO							
TOLERANCES UNLESS OTHERWISE SPECIFIED:		2-1-00	CHACKO							
INCHES:										
0 PLC										
1 PLC										
2 PLC										
3 PLC										
4 PLC										
ANGLES										
FINISH										
MATERIAL										
CUSTOMER DRAWING										

AMP 1471-9 REV 31MAR2000

796329

A