

4

3

2

1

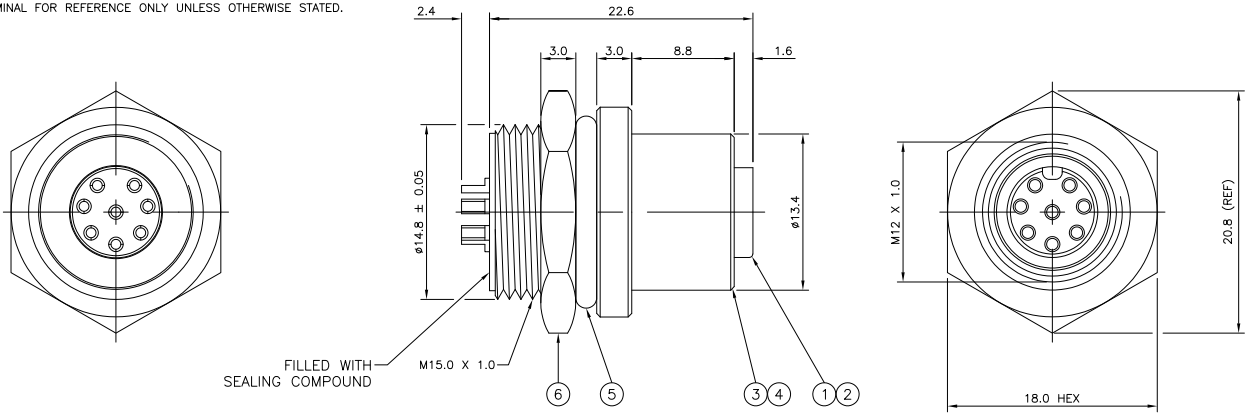
THIS DRAWING IS UNPUBLISHED. RELEASED FOR PUBLICATION
 © COPYRIGHT - By - ALL RIGHTS RESERVED.

| LOC | DIST | REVISIONS | | | |
|-----|------|-------------|---------------------------|---------|--------|
| P | LTR | DESCRIPTION | DATE | DWN | APVD |
| E | B | A1 | REVISED PER ECO-11-005150 | 21MAR11 | RK HMR |

NOTES:

- ELECTRICAL DATA: CONTACT RESISTANCE: 10 mOhm MAX
 INSULATION RESISTANCE: 100 MOhm MIN at 500VDC
 CURRENT RATING: 5 AMPS (FOR 3, 4 AND 5 POSITIONS) AND 2 AMPS (FOR 8 POSITION ONLY)
 BREAKDOWN VOLTAGE: 500 VAC MIN PER MINUTE
- ENVIRONMENTAL: OPERATING TEMPERATURE: -25°C TO +90°C
 SEALING REQUIREMENTS: IP67
- PROD SPEC: 108-3641
- PACKAGING: 107-3334
- FOR TECHNICAL DATA REFER TO YOUR LOCAL TE CONNECTIVITY SALES OFFICE.
- ALL DIMENSIONS ARE NOMINAL FOR REFERENCE ONLY UNLESS OTHERWISE STATED.

| ITEM | DESCRIPTION | MATERIAL | FINISH/COLOUR | QUANTITY / ITEM | | | |
|------|-------------------|----------|-------------------------|-----------------|----|----|----|
| | | | | -1 | -2 | -3 | -4 |
| 1 | CONNECTOR HOUSING | GF NYLON | BLACK | 1 | 1 | 1 | 1 |
| 2 | SOCKET CONTACT | BRASS | 0.15µm GOLD OVER NICKEL | 3 | 4 | 5 | 8 |
| 3 | CONNECTOR BODY | BRASS | NICKEL PLATED | 1 | 1 | 1 | 1 |
| 4 | 'O' RING | VITON | GREEN | 1 | 1 | 1 | 1 |
| 5 | 'O' RING | EPDM | BLACK | 1 | 1 | 1 | 1 |
| 6 | SCREW NUT | BRASS | 2.5µm NICKEL PLATED | 1 | 1 | 1 | 1 |



| DESCRIPTION | NO. OF POS | PART NUMBER |
|--|------------|-------------|
| M12 METAL FEMALE PANEL MOUNT CONNECTOR, SOLDER, STRAIGHT, REAR (CIRCULAR) MOUNTING | 8 | 1838415-4 |
| M12 METAL FEMALE PANEL MOUNT CONNECTOR, SOLDER, STRAIGHT, REAR (CIRCULAR) MOUNTING | 5 | 1838415-3 |
| M12 METAL FEMALE PANEL MOUNT CONNECTOR, SOLDER, STRAIGHT, REAR (CIRCULAR) MOUNTING | 4 | 1838415-2 |
| M12 METAL FEMALE PANEL MOUNT CONNECTOR, SOLDER, STRAIGHT, REAR (CIRCULAR) MOUNTING | 3 | 1838415-1 |

THIS DRAWING IS A CONTROLLED DOCUMENT.

| | | | | |
|-------------|--|------------------|---------|--|
| DIMENSIONS: | TOLERANCES UNLESS OTHERWISE SPECIFIED: | DWN | 09MAR06 | TE Connectivity |
| mm | | CHK | 12APR06 | |
| | | APVD | 12APR06 | |
| | | NAME | | |
| | | PRODUCT SPEC | | M12 METAL FEMALE PANEL MOUNT CONNECTOR, SOLDER, STRAIGHT, REAR (CIRCULAR) MOUNTING |
| | | APPLICATION SPEC | | SIZE |
| MATERIAL | FINISH | WEIGHT | | CAGE CODE |
| | | | | DRAWING NO |
| | | | | RESTRICTED TO |
| | | | | SCALE |
| | | | | SHEET |
| | | | | REV |

CUSTOMER DRAWING NTS 1 of 2 A1

4

3

2

1

THIS DRAWING IS UNPUBLISHED. RELEASED FOR PUBLICATION
 © COPYRIGHT - By - ALL RIGHTS RESERVED.

| LOC | DIST | REVISIONS | | | |
|-----|------|-------------|------|-----|------|
| P | LTR | DESCRIPTION | DATE | DWN | APVD |
| - | - | SEE SHEET 1 | - | - | - |

1838415-1

1838415-2

1838415-3

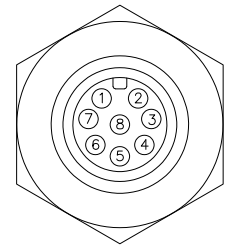
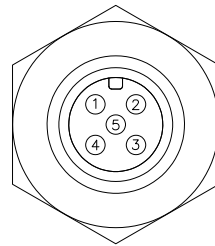
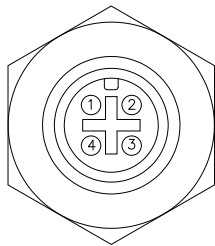
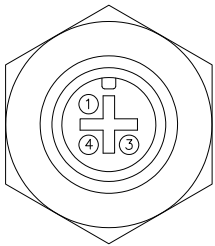
1838415-4

PIN ASSIGNMENTS
FRONT VIEW

PIN ASSIGNMENTS
FRONT VIEW

PIN ASSIGNMENTS
FRONT VIEW

PIN ASSIGNMENTS
FRONT VIEW

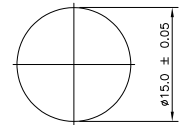
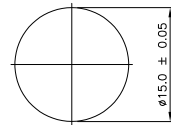
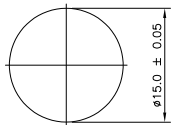
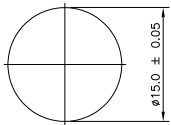


RECOMMENDED PANEL CUT-OUT
(MAX PANEL THICKNESS 4.4mm)

RECOMMENDED PANEL CUT-OUT
(MAX PANEL THICKNESS 4.4mm)

RECOMMENDED PANEL CUT-OUT
(MAX PANEL THICKNESS 4.4mm)

RECOMMENDED PANEL CUT-OUT
(MAX PANEL THICKNESS 4.4mm)



THIS DRAWING IS A CONTROLLED DOCUMENT.

| | | | |
|-------------|--------|--|---|
| DIMENSIONS: | | TOLERANCES UNLESS OTHERWISE SPECIFIED: | |
| mm | | | |
| | 0 PLC | ± | - |
| | 1 PLC | ± | - |
| | 2 PLC | ± | - |
| | 3 PLC | ± | - |
| | 4 PLC | ± | - |
| | ANGLES | ± | - |
| MATERIAL | FINISH | | |
| - | - | | |

| | |
|------------------|----------------|
| DWN | 09MAR06 |
| CHK | A Morey |
| APVD | F.Wheeler-King |
| PRODUCT SPEC | F.Wheeler-King |
| APPLICATION SPEC | - |
| WEIGHT | - |
| CUSTOMER DRAWING | |

| | | | |
|---|-----------|------------|---------------|
| TE Connectivity | | | |
| NAME M12 METAL FEMALE PANEL MOUNT CONNECTOR, SOLDER, STRAIGHT, REAR (CIRCULAR) MOUNTING | | | |
| SIZE | CAGE CODE | DRAWING NO | RESTRICTED TO |
| A3 | 00779 | 1838415 | - |
| SCALE | | SHEET | REV |
| NTS | | 2 of 2 | A1 |