

4

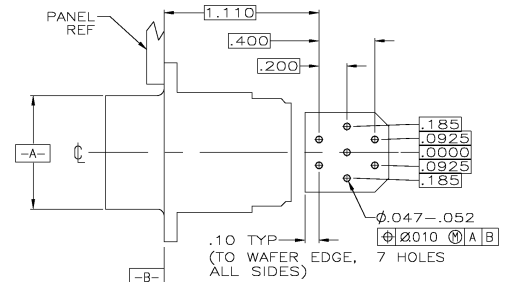
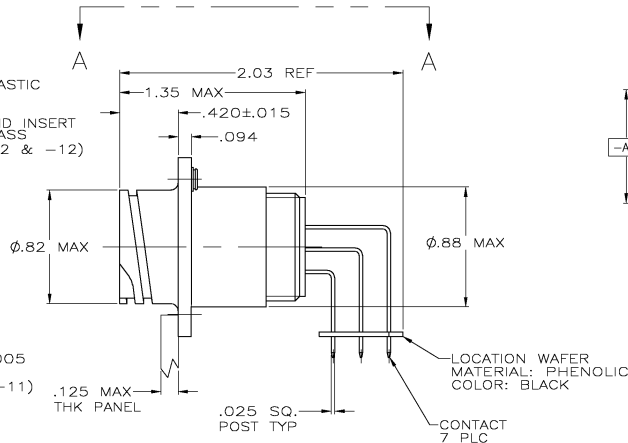
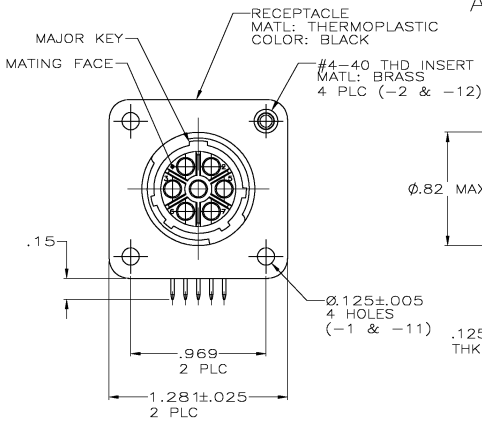
3

2

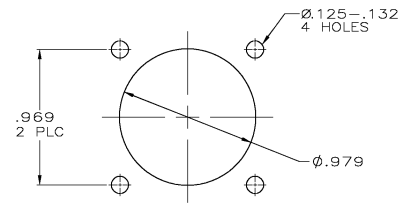
1

THIS DRAWING IS UNPUBLISHED. RELEASED FOR PUBLICATION
 © COPYRIGHT BY TYCO ELECTRONICS CORPORATION. ALL RIGHTS RESERVED.

LOC	DIST	REVISIONS			
P	LTR	DESCRIPTION	DATE	MIN	APPRO
D		REVISED PER 0638-0100-05	5/4/05	SS	HW



VIEW A-A
 RECOMMENDED PC BOARD LAYOUT



RECOMMENDED
 PANEL CUTOUT

- CONTACT CAVITIES IDENTIFIED BY CHARACTERS ON FRONT AND REAR FACES OF CONNECTOR.
- #4 FASTENER RECOMMENDED FOR -1 MOUNTING.
 #4 FASTENER REQUIRED FOR -2 MOUNTING.
- CONTACT BODY: .000030 MIN GOLD FOR A LENGTH OF .250 MIN FROM MATING END, WITH REMAINDER TO BE GOLD FLASH, BOTH OVER .000050 MIN NICKEL.
 CONTACT POST: .000100 MIN TIN-LEAD OVER .000100 MIN COPPER.
- PC BOARD HOLE PATTERN IS DEFINED RELATIVE TO CONNECTOR C.L. AND PANEL MOUNTING FACE INDICATED.
- CONTACT BODY: .000030 MIN GOLD FOR A LENGTH OF .250 MIN FROM MATING END, WITH REMAINDER TO BE GOLD FLASH, BOTH OVER .000050 MIN NICKEL.
 CONTACT POST: .000100 MIN TIN OVER .000100 MIN COPPER.

CONTACT FINISH	CONFIG.	PART NUMBER
W/INSERTS		1-796435-2
W/O INSERTS		1-796435-1
W/INSERTS		796435-2
W/O INSERTS		796435-1

THIS DRAWING IS A CONTROLLED DOCUMENT.		REV	2-18-00	Tyco Electronics Corporation	
DIMENSIONS:		CHK	2-23-00	Harrisburg, Pa 17105-3608	
INCHES		M. CHACKO		RECEPTACLE ASSY, POSTED, RT ANGLE, STD SEX, SIZE 13-7, SERIES 1, CPC	
TOLERANCES UNLESS OTHERWISE SPECIFIED:		APP	2-23-00	SHEET CASE CODE DRAWING NO RESTRICTED TO	
Ø PLC	± .-	M. CHACKO		A2 00779 796435	
Ø PLC	± .-	APPLICATION SPEC		SCALE 2:1 SHEET 1 OF 1 REV D	
Ø PLC	± .03	HEIGHT			
Ø PLC	± .010	MATERIAL			
Ø PLC	± .-	FINISH			
Ø PLC	± .-	CUSTOMER DRAWING			

AMP 1421-9 REV 31 MAR 2000

796435

A