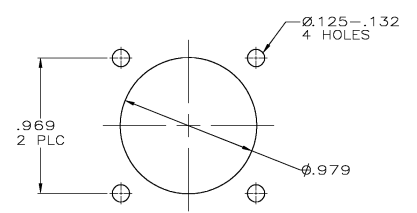
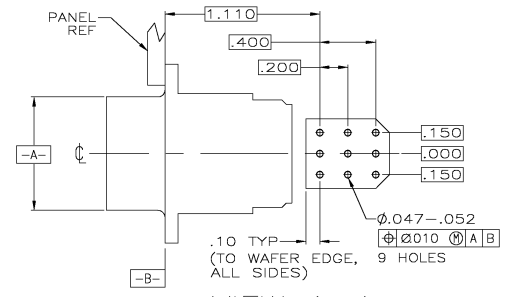
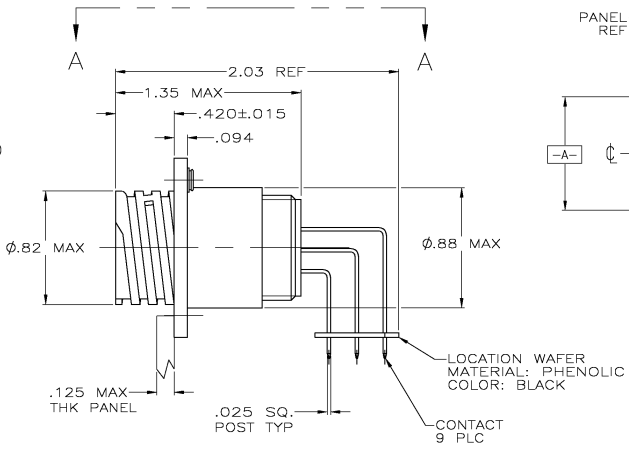
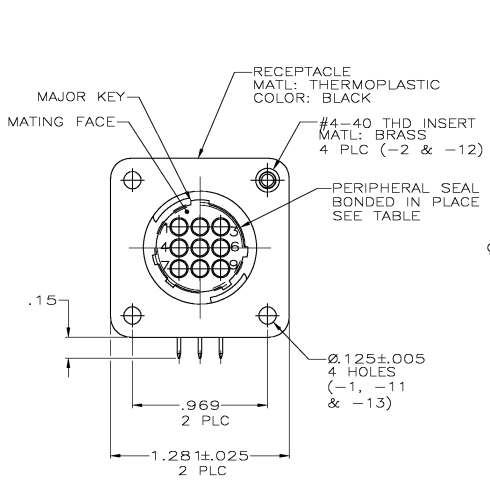


THIS DRAWING IS UNPUBLISHED.  
 RELEASED FOR PUBLICATION  
 COPYRIGHT BY TYCO ELECTRONICS CORPORATION. ALL RIGHTS RESERVED.

LOC		DIST		REVISIONS			
FT	0	F	LTR	DESCRIPTION	DATE	OWN	APP'D
		F		REVISED PER 0038-0100-05	5/3/05	SS	HW



- CONTACT CAVITIES IDENTIFIED BY CHARACTERS ON FRONT AND REAR FACES OF CONNECTOR.
- #4 FASTENER RECOMMENDED FOR -1 MOUNTING.  
#4 FASTENER REQUIRED FOR -2 MOUNTING.
- CONTACT BODY: .000030 MIN GOLD FOR A LENGTH OF .250 MIN FROM MATING END, WITH REMAINDER TO BE GOLD FLASH, BOTH OVER .000050 MIN NICKEL.  
CONTACT POST: .000100 MIN TIN-LEAD OVER .000100 MIN COPPER.
- PC BOARD HOLE PATTERN IS DEFINED RELATIVE TO CONNECTOR C.L. AND PANEL MOUNTING FACE INDICATED.
- CONTACT BODY: .000030 MIN GOLD FOR A LENGTH OF .250 MIN FROM MATING END, WITH REMAINDER TO BE GOLD FLASH, BOTH OVER .000050 MIN NICKEL.  
CONTACT POST: .000100 MIN TIN OVER .000100 MIN COPPER.

RECOMMENDED PANEL CUTOUT			
△	YES	W/O INSERTS	1-796375-3
△	NO	W/INSERTS	1-796375-2
△	NO	W/O INSERTS	1-796375-1
△	YES	W/O INSERTS	796375-3
△	NO	W/INSERTS	796375-2
△	NO	W/O INSERTS	796375-1

THIS DRAWING IS A CONTROLLED DOCUMENT.

DESIGNED BY: JHAMMER	DATE: 2-18-00	Tyco Electronics Corporation Harrisburg, Pa 17105-3608
CHECKED BY: M. CHACKO	DATE: 2-23-00	
DRAWN BY: M. CHACKO	DATE: 2-23-00	RECEPTACLE ASSY, POSTED, RT ANGLE, STD SEX, SIZE 13-9, SERIES 1, CPC
APPLICATION SPEC: -	SIZE: CASE CODE (DRAWING NO):	RESTRICTED TO:
RECORD: -	A2 00779 C=796375	
MATERIAL: -	CUSTOMER DRAWING	SCALE: 2:1 SHEET 1 OF 1 REV F

AMP 1471-9 REV 31MAR2000

796375