

4

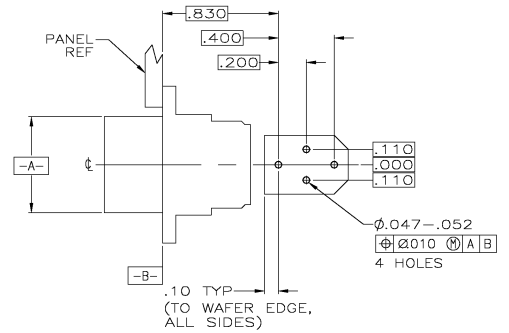
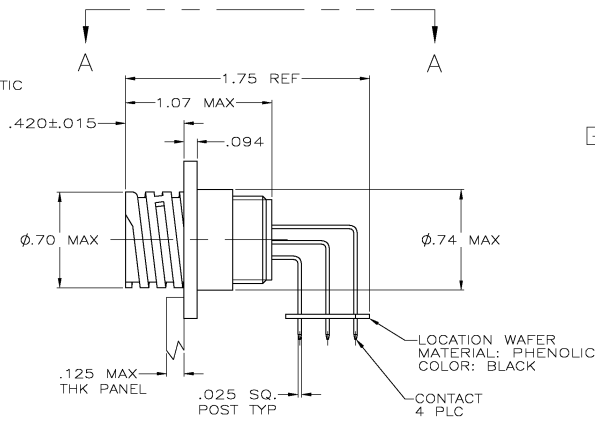
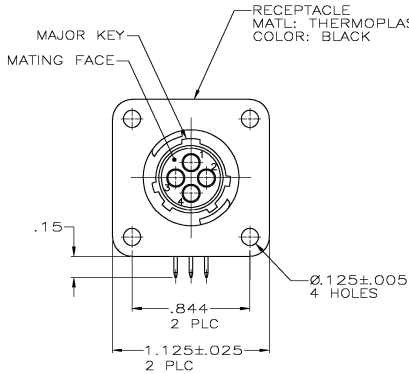
3

2

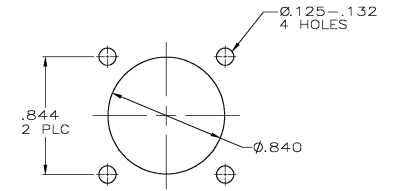
1

THIS DRAWING IS UNPUBLISHED. RELEASED FOR PUBLICATION  
 © COPYRIGHT BY TYCO ELECTRONICS CORPORATION. ALL RIGHTS RESERVED.

| LOC |   | DISTR |     | REVISIONS                |        |     |       |
|-----|---|-------|-----|--------------------------|--------|-----|-------|
| FT  | 0 | P     | LTR | DESCRIPTION              | DATE   | MIN | APPRO |
|     |   | B     |     | REVISED PER 0638-0100-05 | 5/4/05 | SS  | HW    |



VIEW A-A  
 RECOMMENDED PC BOARD LAYOUT



RECOMMENDED  
 PANEL CUTOUT

- CONTACT CAVITIES IDENTIFIED BY CHARACTERS ON FRONT AND REAR FACES OF CONNECTOR.
  - #4 FASTENER RECOMMENDED FOR MOUNTING.
- ⚠ CONTACT BODY: .000030 MIN GOLD FOR A LENGTH OF .200 MIN FROM MATING END, WITH REMAINDER TO BE GOLD FLASH, BOTH OVER .000050 MIN NICKEL.  
 CONTACT POST: .000100 MIN TIN-LEAD OVER .000100 MIN COPPER.
- ⚠ PC BOARD HOLE PATTERN IS DEFINED RELATIVE TO CONNECTOR C.L. AND PANEL MOUNTING FACE INDICATED.
- ⚠ CONTACT BODY: .000030 MIN GOLD FOR A LENGTH OF .200 MIN FROM MATING END, WITH REMAINDER TO BE GOLD FLASH, BOTH OVER .000050 MIN NICKEL.  
 CONTACT POST: .000100 MIN TIN OVER .000100 MIN COPPER.

|                |             |
|----------------|-------------|
| 1-796407-1     |             |
| 796407-1       |             |
| CONTACT FINISH | PART NUMBER |

|  |              |                             |   |                 |
|--|--------------|-----------------------------|---|-----------------|
| THIS DRAWING IS A CONTROLLED DOCUMENT. |              | DRW<br>HAMMER<br>3-20-00    | Tyco Electronics Corporation<br>Harrisburg, Pa 17105-3608               |                 |
| DIMENSIONS:<br>INCHES                  |              | CHK<br>M. CHACKO<br>3-23-00 | RECEPTACLE ASSY, POSTED, RT ANGLE,<br>RVS SEX, SIZE 11-4, SERIES 1, CPC |                 |
| TOLERANCES UNLESS OTHERWISE SPECIFIED: |              | APP<br>M. CHACKO<br>3-23-00 | SIZE CASE CODE DRAWING NO<br>A2 00779 C=796407                          |                 |
| 0 PLC ± .                              | 1 PLC ± .03  | APPLIC. SPEC                | RESTRICTED TO   |                 |
| 2 PLC ± .010                           | 3 PLC ± .010 | WEIGHT                      | -   |                 |
| 4 PLC ± .                              | ANGLES ± .   | CUSTOMER DRAWING            | SCALE<br>2:1  | SHEET<br>1 of 1 |
| MATERIAL                               |              | FINISH                      | REV<br>B  |                 |

AMP 1421-9 REV 31 MAR 2000

796407