

4

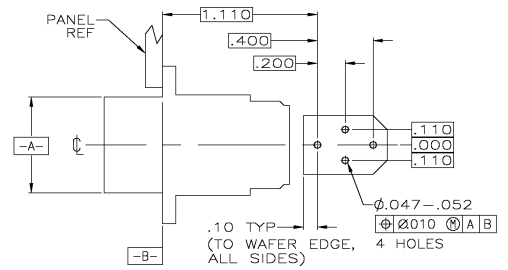
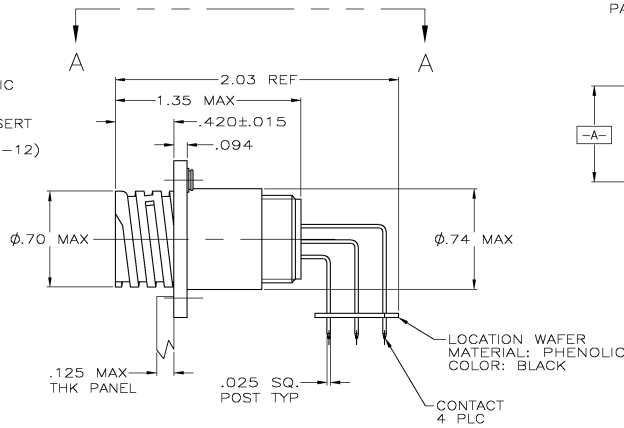
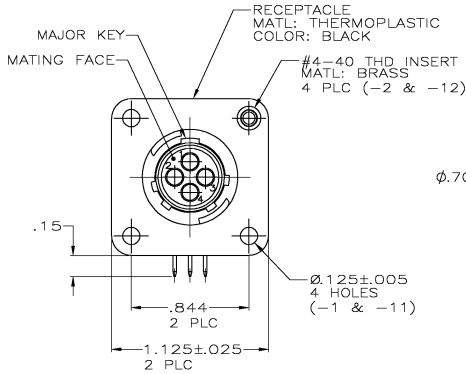
3

2

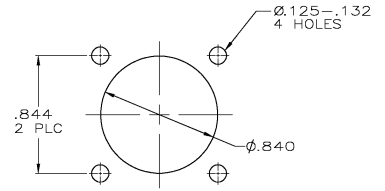
1

THIS DRAWING IS UNPUBLISHED.
 RELEASED FOR PUBLICATION
 COPYRIGHT BY TYCO ELECTRONICS CORPORATION. ALL RIGHTS RESERVED.

LOC	QTY	REV	DESCRIPTION	DATE	BY	APP'D
FT	0	E	REVISED PER 0038-0100-05	5/4/05	SS	HW



VIEW A-A
 RECOMMENDED PC BOARD LAYOUT



RECOMMENDED
 PANEL CUTOUT

- CONTACT CAVITIES IDENTIFIED BY CHARACTERS ON FRONT AND REAR FACES OF CONNECTOR.
 - #4 FASTENER RECOMMENDED FOR -1 MOUNTING.
 #4 FASTENER REQUIRED FOR -2 MOUNTING.
- CONTACT BODY: .000030 MIN GOLD FOR A LENGTH OF .250 MIN FROM MATING END, WITH REMAINDER TO BE GOLD FLASH, BOTH OVER .000050 MIN NICKEL.
 CONTACT POST: .000100 MIN TIN-LEAD OVER .000100 MIN COPPER.
- PC BOARD HOLE PATTERN IS DEFINED RELATIVE TO CONNECTOR C.L. AND PANEL MOUNTING FACE INDICATED.
- CONTACT BODY: .000030 MIN GOLD FOR A LENGTH OF .250 MIN FROM MATING END, WITH REMAINDER TO BE GOLD FLASH, BOTH OVER .000050 MIN NICKEL.
 CONTACT POST: .000100 MIN TIN OVER .000100 MIN COPPER.

CONTACT FINISH	CONFIG.	PART NUMBER
W/INSERTS		1-796403-2
W/O INSERTS		1-796403-1
W/INSERTS		796403-2
W/O INSERTS		796403-1

THIS DRAWING IS A CONTROLLED DOCUMENT.		CHK M. CHACKO	2-18-00	Tyco Electronics Corporation Harrisburg, Pa 17105-3608
DIMENSIONS: INCHES		APP'D M. CHACKO	2-24-00	
DIMENSIONS UNLESS OTHERWISE SPECIFIED: 0 PLC ± .010 1 PLC ± .015 2 PLC ± .020 3 PLC ± .030 4 PLC ± .040 ANGLE ± .5°		PRODUCT SPEC	NAME	RECEPTACLE ASSY, POSTED, RT ANGLE, STD SEX, SIZE 11-4, SERIES 1, CPC
MATERIAL		FINISH	SIZE	CAGE CODE (DRAWING NO)
			A2	00779
			C=	796403
			CUSTOMER DRAWING	SCALE 2:1 SHEET 1 OF 1 REV F

AMP 1471-9 REV 31MAR2000

796403

A