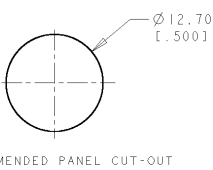
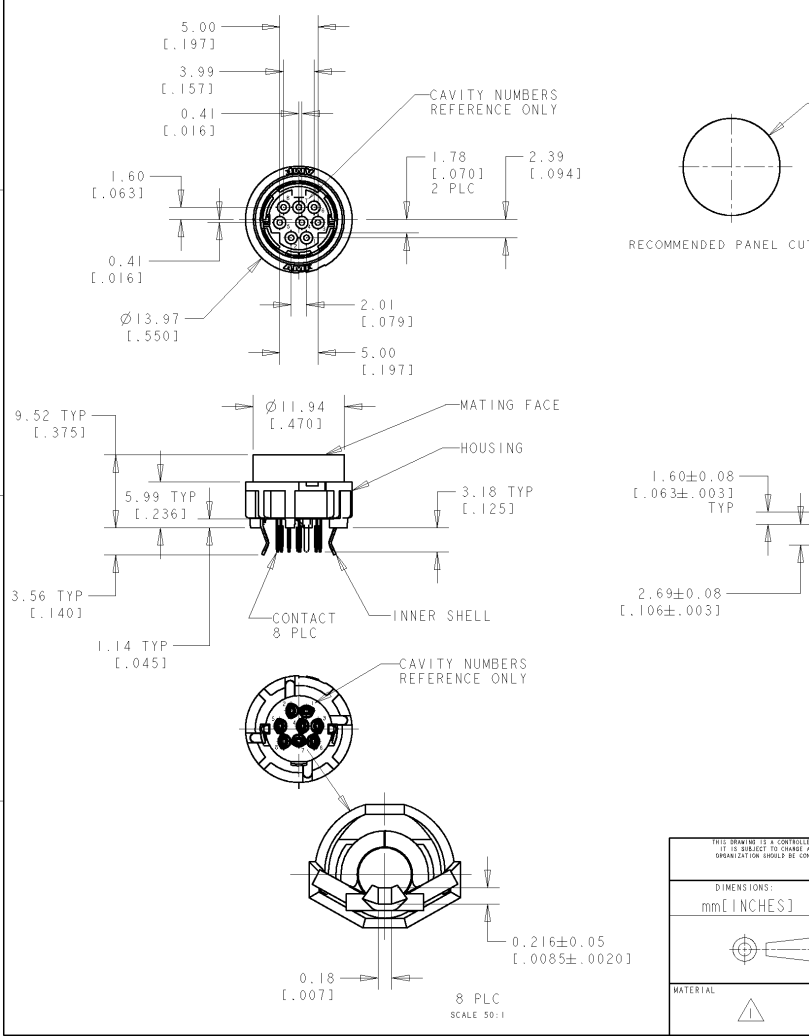
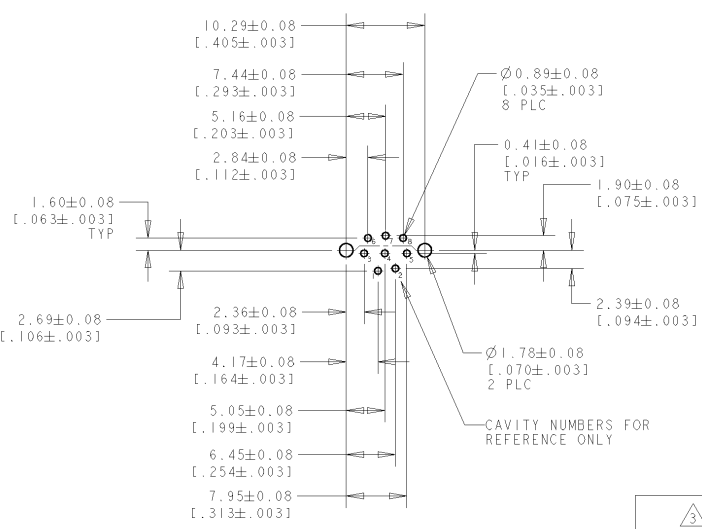


THIS DRAWING IS UNPUBLISHED. RELEASED FOR PUBLICATION
 COPYRIGHT 19 BY AMP INCORPORATED. ALL RIGHTS RESERVED.

LOC	DIST	REVISIONS			
F	LTR	DESCRIPTION	DATE	OWN	APVD
0		NPR ECR-05-005111	21JUN05	LWY	SYJ



NOTES:
 1 SHELLS: BRASS
 CONTACTS: PHOSPHOR BRONZE
 HOUSING: POLYESTER, UL 94V-0 RATED, BLACK
 2 0.76um [.000030] MIN GOLD ON MATING END FOR A LENGTH OF 1.37[.054] MIN ON INSIDE, 2.54um [.000100] MIN TIN FOR A LENGTH OF 3.30um [.130] MIN FROM OPPOSITE END, ALL OVER 1.27um [.000050] MIN NICKEL.
 3 2.54um [.000100] MIN TIN OVER 1.27um [.000050] MIN COPPER
 4 RECEPTACLE ASSEMBLY MATES WITH 8 PIN, $\varnothing 8.99\pm 0.10$ [.354±.004] PLUG.



		5750337-2
INNER SHELL FINISH	CONTACT FINISH	PART NO.

THIS DRAWING IS A CONTROLLED DOCUMENT FOR AMP INCORPORATED. IT IS SUBJECT TO CHANGE AND THE CONTROLLING ENGINEERING ORGANIZATION SHOULD BE CONTACTED FOR THE LATEST REVISION.		OWN: WYLEE CHK: YJ SEE APVD: SF LEONG	21 JUN 2005		 Tyco Electronics Singapore Pte. Ltd.	
DIMENSIONS: mm [INCHES]		TOLERANCES UNLESS OTHERWISE SPECIFIED:		NAME: RECEPTACLE ASSEMBLY, 8 POSN, LOW FLANGE, UNSHIELDED, VERTICAL, MINIATURE CIRCULAR DIN, LF		
 0 PLC ± - 1 PLC ± - 2 PLC ± 0.13(.005) 3 PLC ± - 4 PLC ± - ANGLES ± -		MATERIAL:		FINISH: SEE TABLE		
MATERIAL:		FINISH: SEE TABLE		SIZE: A3	CAGE CODE: 00779	
CUSTOMER DRAWING		DRAWING NO: 5750337		SCALE: 10:	SHEET 1 OF 1 REV 0	

AMP 1470-19 REV 09MAT94
 P14/ENGINEER DRAWING