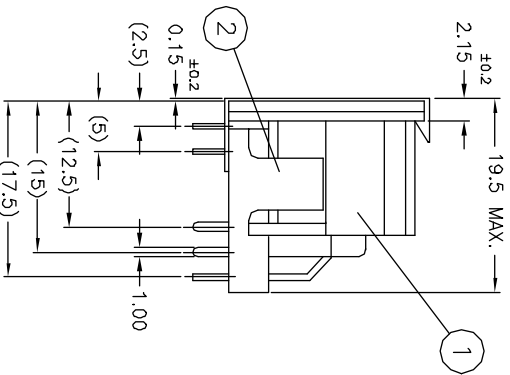
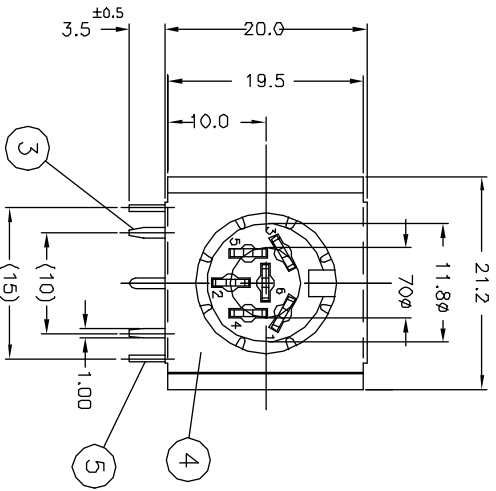
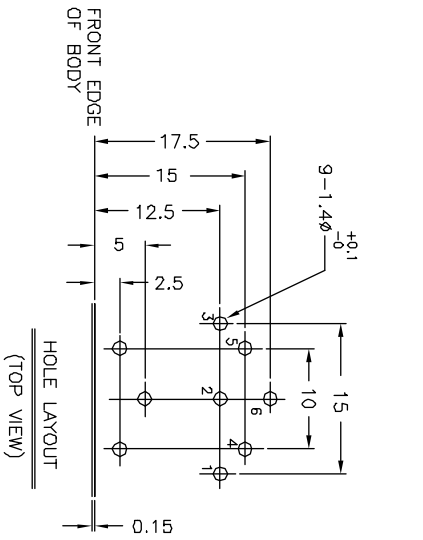
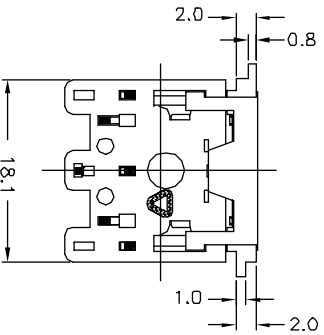


| REV. | ECN NO. OR DESCRIPTION | REVISED | DATE     |
|------|------------------------|---------|----------|
| C    | 修改與實物相符                | EVEN    | 11/14-03 |



**SPECIFICATIONS:**

1. CURRENT CARRYING CAPACITY:
  - 1) AC: 100V 1A MAX.
  - 2) DC: 24V 2A MAX.
2. CONTACT RESISTANCE:
  - 1) INITIAL, BEFORE LIFE CYCLE TEST, CONTACTOR TO PLUG PIN: 20mΩ MAX. EARTH TERMINAL TO PLUG SHELL: 100mΩ MAX.
  - 2) AFTER LIFE CYCLE TEST, CONTACTOR TO PLUG PIN: 100mΩ MAX. EARTH TERMINAL TO PLUG SHELL: 150mΩ MAX.
3. INSULATION RESISTANCE: BETWEEN ANY ADJACENT OPEN CONTACTS SHALL NOT BE LESS THAN 100MΩ AS SPECIFIED BELOW WITH AT 500V DC INSULATION RESISTANCE TEST.
4. DIELECTRIC STRENGTH: A POTENTIAL OF 500V AC RMS, 50/60HZ SHALL BE APPLIED BETWEEN ANY OPEN CONTACTS FOR ONE MINUTE WITHOUT BREAKDOWN.
5. INSERTION FORCE: 5.0kg MAX.
6. WITHDRAWAL FORCE: 1.0kg MIN.
7. LIFE CYCLE TEST: CONNECTOR SHALL BE SUBJECT TO 5,000 CYCLES AT 10 TO 20 CYCLES PER MINUTE WITH NO ELECTRICAL LOAD.



| NO | DESCRIPTION      | QTY | MATERIAL              | PLATING & COLOR   |
|----|------------------|-----|-----------------------|-------------------|
| 5  | CONTACT TERMINAL | 6   | BRASS 0.7t            | TIN ALLOY PLATING |
| 4  | SHIELDING PLATE  | 1   | PHOSPHOR BRONZE 0.15t | TIN ALLOY PLATING |
| 3  | EARTH TERMINAL   | 1   | PHOSPHOR BRONZE 0.25t | TIN ALLOY PLATING |
| 2  | COVER            | 1   | PBT UL 94V-0          | BLACK COLOR       |
| 1  | BODY             | 1   | PBT UL 94V-0          | BLACK COLOR       |

UNLESS OTHERWISE SPECIFIED TOLERANCES

| TITLE     | 6P 240° DIN CONNECTOR                         |
|-----------|---|
| DECIMALS: | X: ±0.3 X: ±0.2 X.X: ±0.2 X.X: ±1° X.XX: ±0.1 |
| ANGLES:   | X: ±2° X.X: ±1° X.XX: ±1°                     |
| TITLE     | 6P 240° DIN CONNECTOR                         |
| DWN       | DWN 11/14-03                                  |
| CHKD      | CHKD SW 11/18-03                              |
| APVD      | APVD 11/14-03                                 |
| PART NO.  | PART NO. 2DJ-0196PSA2                         |
| SCALE:    | SCALE: 2/1                                    |
| UNIT:     | UNIT: MM                                      |
| SHEET:    | SHEET: 1 OF 1                                 |
| REV:      | REV: C  |

Form: 1