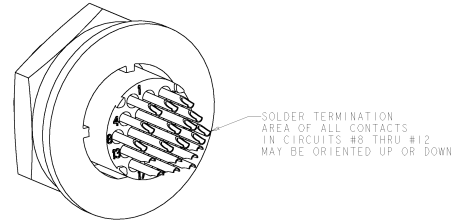
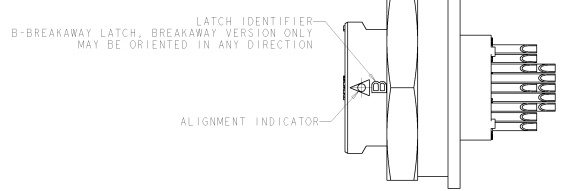
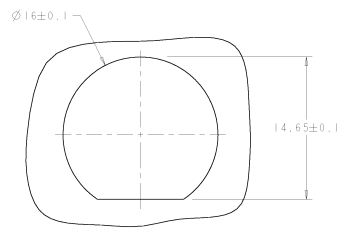
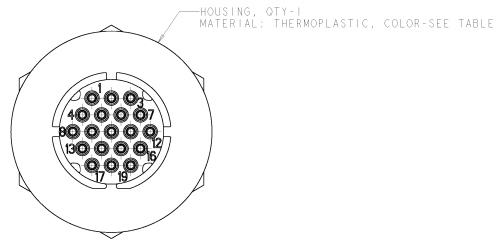
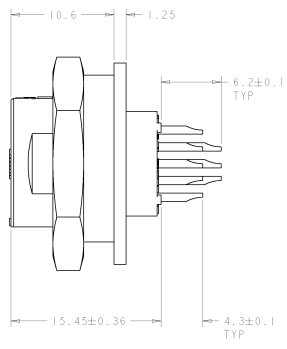
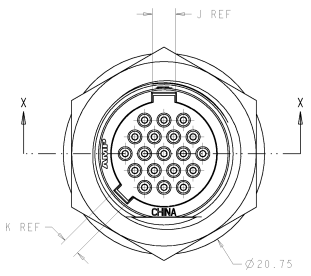


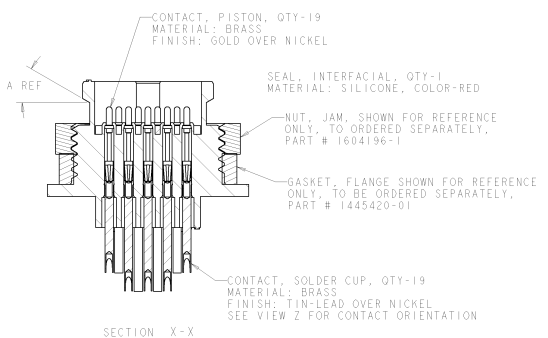
REV	DATE	DESCRIPTION	BY	CHKD	APPD
0	01/15/2004	REVISED ECO-01-223816			



VIEW Z



SUGGESTED PANEL CUTOUT  
 3.18 MAX PANEL THICKNESS



SECTION X-X

MANUFACTURER EN	PROJECT/DATE/REV 1000000000/22APR2001/01	PART NUMBER 1000000000	DATE 22APR2001	<b>Tyco</b> <b>Electronics</b> Tyco Electronics Harrisburg, PA 17105-8800
SEE CALLOUT SEE CALLOUT	SEE CALLOUT SEE CALLOUT	DESCRIPTION ASSEMBLY, RECEPTACLE FLANGE, SPRING PROBE, SOLDER CUP, 19 POSITION, MICRO CIRC.	PART / ENG. DRG. / DRAWING NO. A / 100779 / 1445759	REVISIONS 1
CUSTOMER DRAWING		PART / ENG. DRG. / DRAWING NO. A / 100779 / 1445759		

8 7 6 5 4 3 2 1

DATE MANUFACTURED: 22/02/2021  
 REVISIONS FOR MANUFACTURE: 01  
 QTY. CONFIRMED BY: TONY ELECTRONICS CORPORATION, 11110001000000

REV	DATE	DESCRIPTION	BY	CHKD	APPD
0					

QTY	SELECT LOADED IN CIRCUITS	FINISH	CODE	K	J	A	DESCRIPTION	SEAL COLOR	HOUSING COLOR	PART NUMBER
		CONTACT					LATCH CONFIGURATION			
11	4-7,9,10,11,13-16	TIN OVER NICKEL	A	1.8	2.4	30°	BREAKAWAY	RED	WHITE	4-1445759-3
11	4-7,9,10,11,13-16	TIN OVER NICKEL	A	1.8	2.4	0°	POSITIVE	RED	BLACK	4-1445759-2
10	4-7,9,11,13-16	TIN OVER NICKEL	A	1.8	2.4	30°	BREAKAWAY	RED	WHITE	4-1445759-1
10	4-7,9,11,13-16	TIN OVER NICKEL	A	1.8	2.4	0°	POSITIVE	RED	BLACK	4-1445759-0
8	1,3,5,6,14,15,17,19	TIN OVER NICKEL	A	1.8	2.4	30°	BREAKAWAY	RED	WHITE	3-1445759-9
8	1,3,5,6,14,15,17,19	TIN OVER NICKEL	A	1.8	2.4	0°	POSITIVE	RED	BLACK	3-1445759-8
9	1-3,8,10,12,17-19	TIN OVER NICKEL	B	2.4	1.8	0°	POSITIVE	YELLOW	BLACK	3-1445759-7
9	1-3,8,10,12,17-19	TIN OVER NICKEL	A	1.8	2.4	0°	POSITIVE	RED	BLACK	3-1445759-6
12	1-4, 7,8,12,13, 16-19	TIN OVER NICKEL	A	1.8	2.4	30°	BREAKAWAY	RED	WHITE	3-1445759-5
12	1-4, 7,8,12,13, 16-19	TIN OVER NICKEL	A	1.8	2.4	0°	POSITIVE	RED	BLACK	3-1445759-4
13	1-4, 7,8,10,12,13, 16-19	TIN OVER NICKEL	A	1.8	2.4	30°	BREAKAWAY	RED	WHITE	3-1445759-3
13	1-4, 7,8,10,12,13, 16-19	TIN OVER NICKEL	A	1.8	2.4	0°	POSITIVE	RED	BLACK	3-1445759-2
14	1-4, 7-9, 11-13, 16-19	TIN OVER NICKEL	A	1.8	2.4	30°	BREAKAWAY	RED	WHITE	3-1445759-1
14	1-4, 7-9, 11-13, 16-19	TIN OVER NICKEL	A	1.8	2.4	0°	POSITIVE	RED	BLACK	3-1445759-0
15	1-4, 7-13, 16-19	TIN OVER NICKEL	A	1.8	2.4	30°	BREAKAWAY	RED	WHITE	2-1445759-9
15	1-4, 7-13, 16-19	TIN OVER NICKEL	A	1.8	2.4	0°	POSITIVE	RED	BLACK	2-1445759-8
16	1-8, 12-19	TIN OVER NICKEL	A	1.8	2.4	30°	BREAKAWAY	RED	WHITE	2-1445759-7
16	1-8, 12-19	TIN OVER NICKEL	A	1.8	2.4	0°	POSITIVE	RED	BLACK	2-1445759-6
17	1-8, 10, 12-19	TIN OVER NICKEL	A	1.8	2.4	30°	BREAKAWAY	RED	WHITE	2-1445759-5
17	1-8, 10, 12-19	TIN OVER NICKEL	A	1.8	2.4	0°	POSITIVE	RED	BLACK	2-1445759-4
18	1-9, 11-19	TIN OVER NICKEL	A	1.8	2.4	30°	BREAKAWAY	RED	WHITE	2-1445759-3
18	1-9, 11-19	TIN OVER NICKEL	A	1.8	2.4	0°	POSITIVE	RED	BLACK	2-1445759-2
19	ALL	TIN OVER NICKEL	A	1.8	2.4	30°	BREAKAWAY	RED	WHITE	2-1445759-1
19	ALL	TIN OVER NICKEL	A	1.8	2.4	0°	POSITIVE	RED	BLACK	2-1445759-0
19	ALL	TIN LEAD OVER NICKEL	B	2.4	1.8	0°	POSITIVE	YELLOW	BLACK	1-1445759-0
9	1-3,8,10,12,17-19	TIN LEAD OVER NICKEL	A	1.8	2.4	0°	POSITIVE	RED	BLACK	1-1445759-7
12	1-4, 7,8,12,13, 16-19	TIN LEAD OVER NICKEL	A	1.8	2.4	30°	BREAKAWAY	RED	WHITE	1-1445759-6
12	1-4, 7,8,12,13, 16-19	TIN LEAD OVER NICKEL	A	1.8	2.4	0°	POSITIVE	RED	BLACK	1-1445759-5
13	1-4, 7,8,10,12,13, 16-19	TIN LEAD OVER NICKEL	A	1.8	2.4	30°	BREAKAWAY	RED	WHITE	1-1445759-4
13	1-4, 7,8,10,12,13, 16-19	TIN LEAD OVER NICKEL	A	1.8	2.4	0°	POSITIVE	RED	BLACK	1-1445759-3
14	1-4, 7-9, 11-13, 16-19	TIN LEAD OVER NICKEL	A	1.8	2.4	30°	BREAKAWAY	RED	WHITE	1-1445759-2
14	1-4, 7-9, 11-13, 16-19	TIN LEAD OVER NICKEL	A	1.8	2.4	0°	POSITIVE	RED	BLACK	1-1445759-1
15	1-4, 7-13, 16-19	TIN LEAD OVER NICKEL	A	1.8	2.4	30°	BREAKAWAY	RED	WHITE	1-1445759-0
15	1-4, 7-13, 16-19	TIN LEAD OVER NICKEL	A	1.8	2.4	0°	POSITIVE	RED	BLACK	1445759-9
16	1-8, 12-19	TIN LEAD OVER NICKEL	A	1.8	2.4	30°	BREAKAWAY	RED	WHITE	1445759-8
16	1-8, 12-19	TIN LEAD OVER NICKEL	A	1.8	2.4	0°	POSITIVE	RED	BLACK	1445759-7
17	1-8, 10, 12-19	TIN LEAD OVER NICKEL	A	1.8	2.4	30°	BREAKAWAY	RED	WHITE	1445759-6
17	1-8, 10, 12-19	TIN LEAD OVER NICKEL	A	1.8	2.4	0°	POSITIVE	RED	BLACK	1445759-5
18	1-9, 11-19	TIN LEAD OVER NICKEL	A	1.8	2.4	30°	BREAKAWAY	RED	WHITE	1445759-4
18	1-9, 11-19	TIN LEAD OVER NICKEL	A	1.8	2.4	0°	POSITIVE	RED	BLACK	1445759-3
19	ALL	TIN LEAD OVER NICKEL	A	1.8	2.4	30°	BREAKAWAY	RED	WHITE	1445759-2
19	ALL	TIN LEAD OVER NICKEL	A	1.8	2.4	0°	POSITIVE	RED	BLACK	1445759-1

		DATE: 22/02/2021 BY: JH CHECKED: 22/02/2021 BY: JH APPROVED: 22/02/2021 BY: JH	<b>Tyco</b> Tyco Electronics Harrisburg, PA 17105-1808
PART NUMBER: 00779 REV: 01 MATERIAL: A	ASSEMBLY: RECEPTACLE FLANGE, SPRING PROBE, SOLDER COP, 19 POSITION, MICRO CPC	QTY: 1000 UNIT: 1000	CUSTOMER DRAWING: 1445759