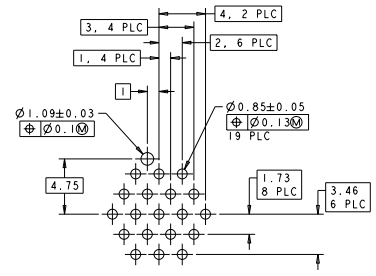
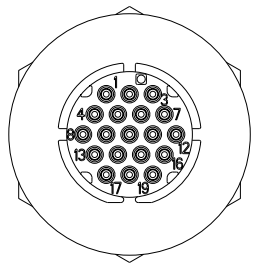
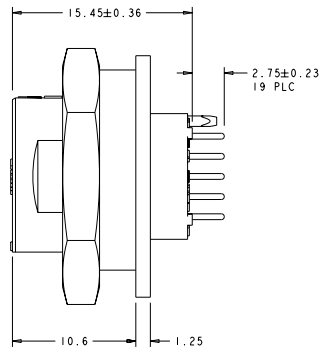
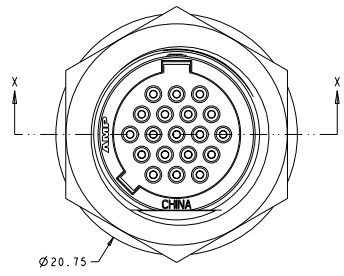
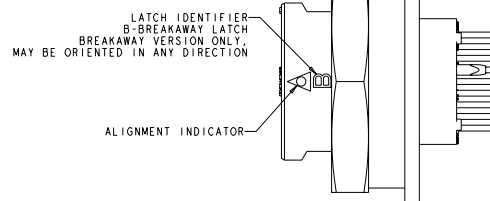
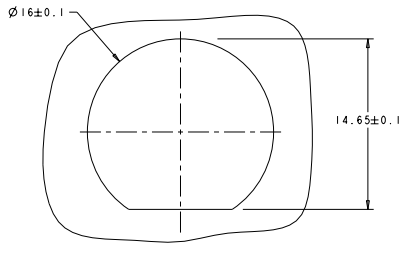
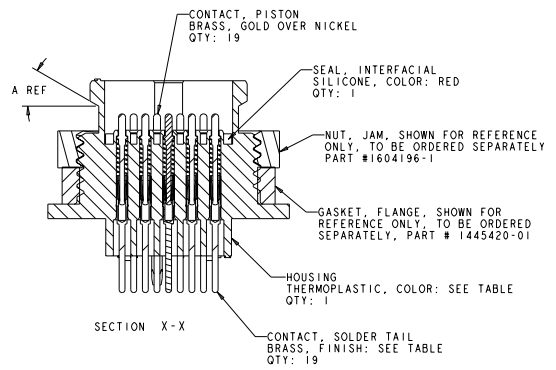


REVIS		REVISONS			
NO	DATE	BY	DESCRIPTION	CHKD	APPD
D1			REVISED ECO-N-029818	BLUMHART	SM DC



SUGGESTED PRINTED CIRCUIT BOARD LAYOUT



SUGGESTED PANEL CUTOUT 3.18 MAX PANEL THICKNESS

DATE: 22 JUL 2001 TIME: 10:00 AM DRAWN BY: J. BLUMHART CHECKED BY: J. BLUMHART APPROVED BY: J. BLUMHART SEE CALLOUT		SERIAL NO.: 22802001 DATE: 29 JUL 2004 TIME: 09:00 APPLICATION SPEC: - REVISION: - CUSTOMER DRAWING		Tyco Electronics Harrisburg, PA 17105-3600 RECEPTACLE ASSEMBLY, 19 POSITION, SPRING PROBE, SOLDER TAIL, FLANGE, VERTICAL, MICRO CPC STATE CASE CODE (SEE TABLE 40) A   00779   1445758 PART NUMBER 100	
--	--	--	--	---	--

8 7 6 5 4 3 2 1

DATE SHOWN TO MANUFACTURER RECEIVED FOR FABRICATION

BY THIS ELECTRONIC COMPONENT ALL RIGHTS RESERVED

REVISED		REVISIONS	
NO.	DATE	DESCRIPTION	BY
0	FT	SEE SHEET 1	

11	4-7,9,10,11,13-16	TIN OVER NICKEL	30°	WHITE	BREAKAWAY	4-1445758-4
11	4-7,9,10,11,13-16	TIN OVER NICKEL	0°	BLACK	POSITIVE	4-1445758-3
10	4-7,9,11,13-16	TIN OVER NICKEL	30°	WHITE	BREAKAWAY	4-1445758-2
10	4-7,9,11,13-16	TIN OVER NICKEL	0°	BLACK	POSITIVE	4-1445758-1
8	1,3,5,6,14,15,17,19	TIN OVER NICKEL	30°	WHITE	BREAKAWAY	4-1445758-0
8	1,3,5,6,14,15,17,19	TIN OVER NICKEL	0°	BLACK	POSITIVE	3-1445758-9
9	2,5,6,9-11,14,15,18	TIN OVER NICKEL	0°	BLACK	POSITIVE	3-1445758-8
12	1-4,7,8,12,13,16-19	TIN OVER NICKEL	0°	BLACK	POSITIVE	3-1445758-7
9	2,5,6,9-11,14,15,18	TIN OVER NICKEL	0°	BLACK	POSITIVE	3-1445758-6
12	1-4,7,8,12,13,16-19	TIN OVER NICKEL	30°	WHITE	BREAKAWAY	3-1445758-5
12	1-4,7,8,12,13,16-19	TIN OVER NICKEL	0°	BLACK	POSITIVE	3-1445758-4
13	1-4,7,8,10,12,13,16-19	TIN OVER NICKEL	30°	WHITE	BREAKAWAY	3-1445758-3
13	1-4,7,8,10,12,13,16-19	TIN OVER NICKEL	0°	BLACK	POSITIVE	3-1445758-2
14	1-4,7-9,11-13,16-19	TIN OVER NICKEL	30°	WHITE	BREAKAWAY	3-1445758-1
14	1-4,7-9,11-13,16-19	TIN OVER NICKEL	0°	BLACK	POSITIVE	3-1445758-0
15	1-4,7-13,16-19	TIN OVER NICKEL	30°	WHITE	BREAKAWAY	2-1445758-9
15	1-4,7-13,16-19	TIN OVER NICKEL	0°	BLACK	POSITIVE	2-1445758-8
16	1-8,12,13-19	TIN OVER NICKEL	30°	WHITE	BREAKAWAY	2-1445758-7
16	1-8,12,13-19	TIN OVER NICKEL	0°	BLACK	POSITIVE	2-1445758-6
17	1-8,10,12-19	TIN OVER NICKEL	30°	WHITE	BREAKAWAY	2-1445758-5
17	1-8,10,12-19	TIN OVER NICKEL	0°	BLACK	POSITIVE	2-1445758-4
18	1-9,11-19	TIN OVER NICKEL	30°	WHITE	BREAKAWAY	2-1445758-3
18	1-9,11-19	TIN OVER NICKEL	0°	BLACK	POSITIVE	2-1445758-2
19	ALL	TIN OVER NICKEL	30°	WHITE	BREAKAWAY	2-1445758-1
19	ALL	TIN OVER NICKEL	0°	BLACK	POSITIVE	2-1445758-0
9	2,5,6,9-11,14,15,18	TIN-LEAD OVER NICKEL	0°	BLACK	POSITIVE	1-1445758-7
12	1-4,7,8,12,13,16-19	TIN-LEAD OVER NICKEL	30°	WHITE	BREAKAWAY	1-1445758-6
12	1-4,7,8,12,13,16-19	TIN-LEAD OVER NICKEL	0°	BLACK	POSITIVE	1-1445758-5
13	1-4,7,8,10,12,13,16-19	TIN-LEAD OVER NICKEL	30°	WHITE	BREAKAWAY	1-1445758-4
13	1-4,7,8,10,12,13,16-19	TIN-LEAD OVER NICKEL	0°	BLACK	POSITIVE	1-1445758-3
14	1-4,7-9,11-13,16-19	TIN-LEAD OVER NICKEL	30°	WHITE	BREAKAWAY	1-1445758-2
14	1-4,7-9,11-13,16-19	TIN-LEAD OVER NICKEL	0°	BLACK	POSITIVE	1-1445758-1
15	1-4,7-13,16-19	TIN-LEAD OVER NICKEL	30°	WHITE	BREAKAWAY	1-1445758-0
15	1-4,7-13,16-19	TIN-LEAD OVER NICKEL	0°	BLACK	POSITIVE	1445758-9
16	1-8,12,13-19	TIN-LEAD OVER NICKEL	30°	WHITE	BREAKAWAY	1445758-8
16	1-8,12,13-19	TIN-LEAD OVER NICKEL	0°	BLACK	POSITIVE	1445758-7
17	1-8,10,12-19	TIN-LEAD OVER NICKEL	30°	WHITE	BREAKAWAY	1445758-6
17	1-8,10,12-19	TIN-LEAD OVER NICKEL	0°	BLACK	POSITIVE	1445758-5
18	1-9,11-19	TIN-LEAD OVER NICKEL	30°	WHITE	BREAKAWAY	1445758-4
18	1-9,11-19	TIN-LEAD OVER NICKEL	0°	BLACK	POSITIVE	1445758-3
19	ALL	TIN-LEAD OVER NICKEL	30°	WHITE	BREAKAWAY	1445758-2
19	ALL	TIN-LEAD OVER NICKEL	0°	BLACK	POSITIVE	1445758-1
QTY	CIRCUITS LOADED	FINISH	A	COLOR	LATCH	PART NUMBER
CONTACTS			HOUSING			PART NUMBER

DATE: 22JUL2004 TIME: 10:00 AM BY: J. BLISS FOR: 1445758-19 PART: 1445758-19 DRAWING: 1445758-19	DATE: 22JUL2004 TIME: 10:00 AM BY: J. BLISS FOR: 1445758-19 PART: 1445758-19 DRAWING: 1445758-19	DATE: 22JUL2004 TIME: 10:00 AM BY: J. BLISS FOR: 1445758-19 PART: 1445758-19 DRAWING: 1445758-19	DATE: 22JUL2004 TIME: 10:00 AM BY: J. BLISS FOR: 1445758-19 PART: 1445758-19 DRAWING: 1445758-19
---	---	---	---

RECEPTACLE ASSEMBLY, 19 POSITION, SPRING PROBE, SOLDER TAIL, FLANGE, VERTICAL, MICRO CPC  
 STATE CASE CODE (RELATE TO) A 00779 1445758  
 CUSTOMER DRAWING