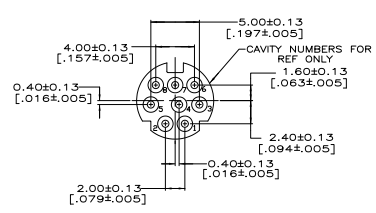
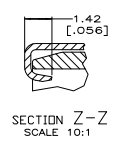
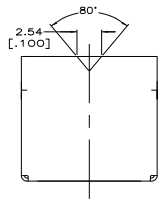
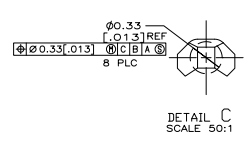
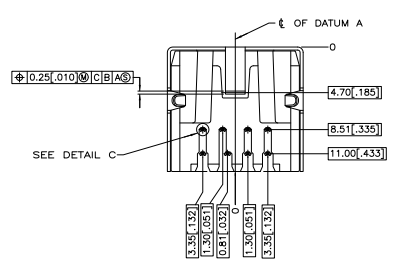
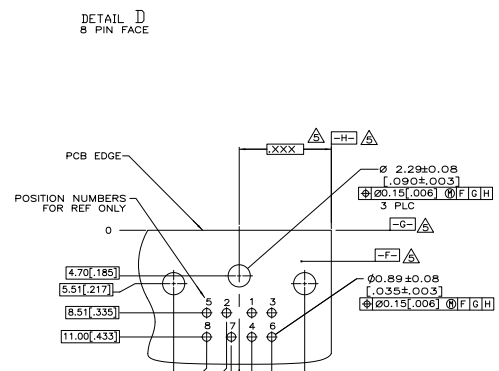
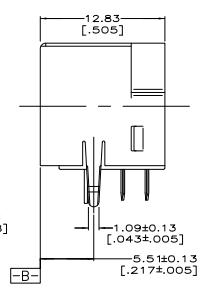
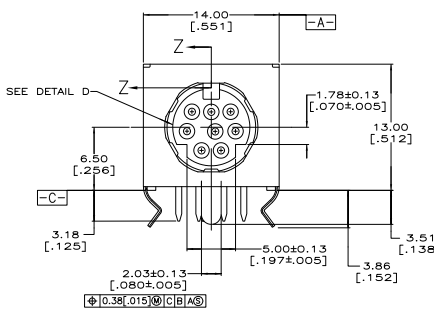


REV	DATE	DESCRIPTION	BY	CHK	APP
00					
01		REVISED PER EDD-11-004836			



- ▲ RECEPTACLE CONTACTS: COPPER ALLOY.
RECEPTACLE SHIELD: COPPER ALLOY.
HOUSING: LCP, COLOR: BLACK, UL 94V-0 RATED.
- ▲ PLATING:
RECEPTACLE CONTACTS - GOLD PLATED 0.00076 [0.00030] MIN ON MATING END, TIN PLATED 0.0030 [0.00120] MIN ON SOLDER TAIL, ALL OVER 0.0013 [0.00050] MIN NICKEL.
- ▲ PLATING:
SHIELD: 0.0015-0.004 [0.00059-0.00158] BRIGHT TIN.
- 4. RECEPTACLE ASSEMBLY MATES WITH 8 PIN 9.00±0.10 [0.354±0.04] DIAMETER PLUG.
- ▲ DATUMS AND BASIC DIMENSION DETERMINED BY CUSTOMER.



1658998-1
 PART NUMBER

THIS DRAWING IS A CONTROLLED DOCUMENT.		REV. 00	DATE	DESCRIPTION	BY	CHK	APP
INCHES	MILLIMETERS	0.0001					
1:1	0.0254						
2:1	0.0508						
5:1	0.127						
10:1	0.254						
20:1	0.508						
50:1	1.27						
100:1	2.54						
DATE	SIZE	DATE	SIZE	DATE	SIZE	DATE	SIZE
	A1	00779	G	1658998			
CUSTOMER DRAWING		SIZE	5:1	SHEET	1	TOTAL	1