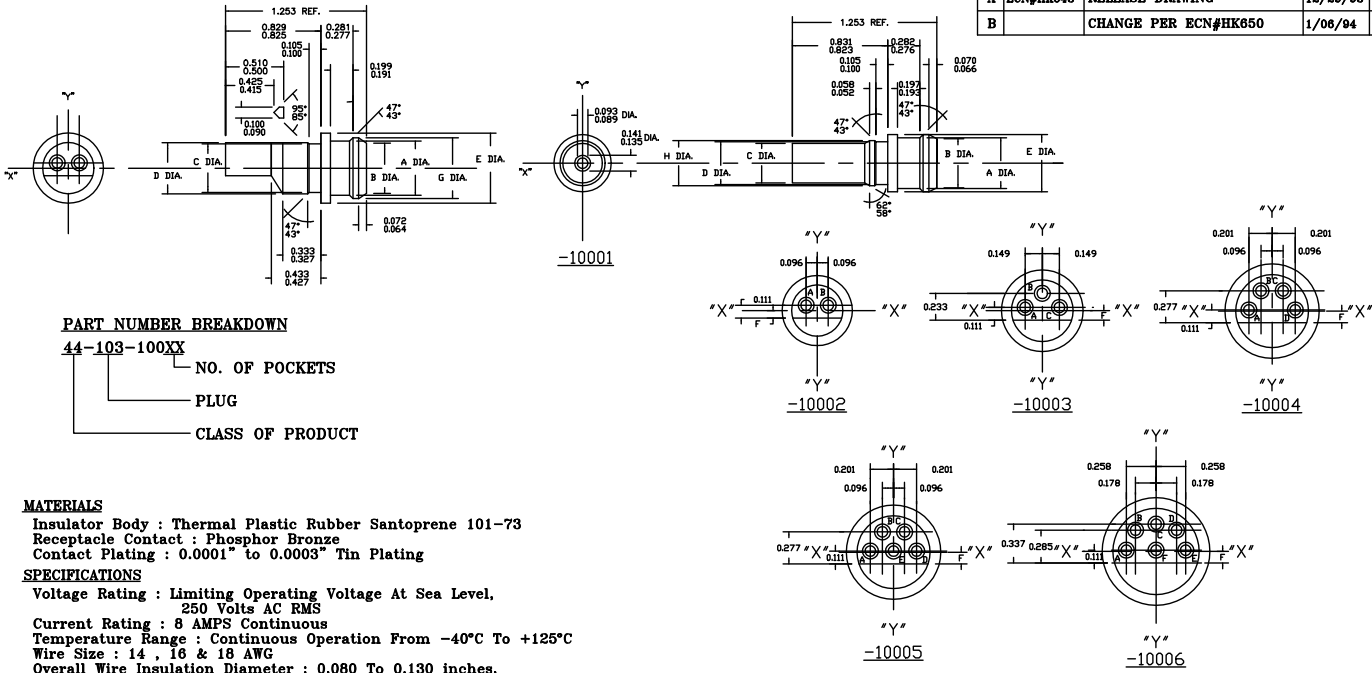


This document is the property of Amphenol Corporation and is delivered on the express condition that it is not to be disseminated, reproduced or used in whole or in part for manufacture or sale by anyone other than Amphenol Corporation without the prior consent and that no right is granted to disclose or to use any information in this document.

REVISIONS				
SYM	ZONE	DESCRIPTION	DATE	APPROVED
A	ECN#HK643	RELEASE DRAWING	12/29/93	Y.M.LEE
B		CHANGE PER ECN#HK650	1/06/94	Y.M.LEE



**PART NUMBER BREAKDOWN**  
**44-103-100XX**  
 NO. OF POCKETS  
 PLUG  
 CLASS OF PRODUCT

**MATERIALS**  
 Insulator Body : Thermal Plastic Rubber Santoprene 101-73  
 Receptacle Contact : Phosphor Bronze  
 Contact Plating : 0.0001" to 0.0003" Tin Plating

**SPECIFICATIONS**  
 Voltage Rating : Limiting Operating Voltage At Sea Level,  
 250 Volts AC RMS  
 Current Rating : 8 AMPS Continuous  
 Temperature Range : Continuous Operation From -40°C To +125°C  
 Wire Size : 14 , 16 & 18 AWG  
 Overall Wire Insulation Diameter : 0.080 To 0.130 inches.  
 (2.03 To 3.30 mm)  
 Insulation Resistance : 5,000 Megaohms Min.  
 Dielectric Withstanding Voltage : 1000 VRMS

PART NUMBER	NUMBER OF POCKETS (REF)	A DIA.	B DIA.	C DIA.	D DIA.	E DIA.	F DIA.	G DIA.	H DIA.
44-103-10001	1	.443/.437	.428/.422	.346/.340	.375/.369	.500/.494	-	-	.395/.389
44-103-10002	2	.473/.467	.440/.432	.425/.419	.446/.440	.610/.604	.068/.062	.530/.524	-
44-103-10003	3	.574/.568	.541/.533	.517/.511	.538/.532	.711/.705	.085/.079	.631/.625	-
44-103-10004	4	.685/.679	.650/.644	.615/.609	.636/.630	.822/.816	.104/.098	.742/.736	-
44-103-10005	5	.685/.679	.650/.644	.615/.609	.636/.630	.822/.816	.104/.098	.742/.736	-
44-103-10006	6	.799/.793	.764/.758	.729/.723	.750/.744	.936/.930	.102/.099	.856/.850	-

**CUSTOMER INFORMATION DRAWING**

ITEM NO	PART OR IDENTIFICATION NO	NOMENCLATURE OR DESCRIPTION	QTY REQ'D
PARTS LIST			
UNLESS OTHERWISE SPECIFIED TOLERANCES		APPROVAL	DATE
U.S. METRIC		DRAWN MAN WONG	11/25/93
X +/-		CHECKED Y. M. LEE	1/06/94
XX +/-		APPR.	
XXX +/-		APPR.	
FRACTIONS +/-		APPR.	
ANGLES +/-		APPR.	
FOR MATERIALS AND FINISHES SEE NOTES			
REMOVE SHARP EDGES		ANGLE OF PROJECTION	
DIMENSIONS			
U.S. INCHES			
-(MFFR)-			
		SIZE DRAWING NO. <b>B C44-103-100XX</b> REV. <b>B</b> TITLE <b>PLUG CONNECTOR MINIATURE, 1 THRU 6 CONTACT</b> SCALE <b>NONE</b> SHEET <b>1</b> OF <b>1</b>	