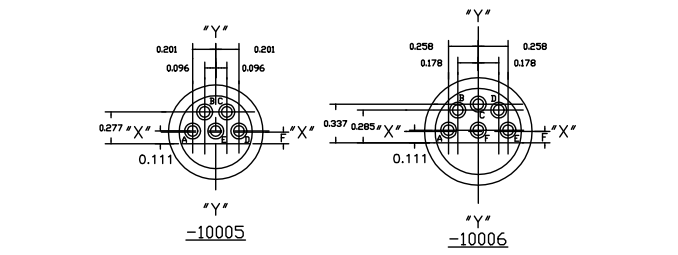
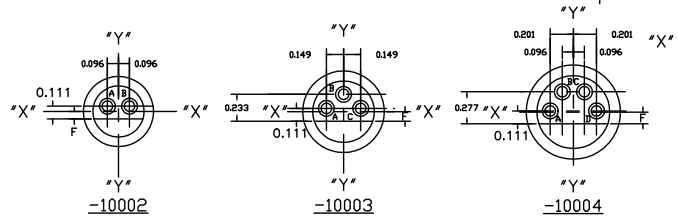
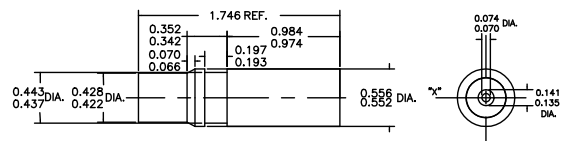
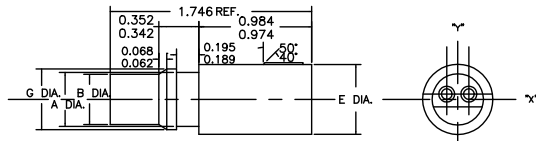


This document is the property of Amphenol Corporation and is delivered on the express condition that it is not to be disseminated, reproduced or used in whole or in part for manufacture or sale by anyone other than Amphenol Corporation without the prior consent and that no right is granted to disclose or to use any information in this document.

REVISIONS				
SYM	ZONE	DESCRIPTION	DATE	APPROVED
A	ECN#HK643	DRAWING RELEASE	12/28/93	Y.M.LEE
B		CHANGE PER ECN#HK850	1/06/94	Y.M.LEE



PART NUMBER BREAKDOWN
 44-104-100XX-XX
 PANEL MTG GROOVE
 SEE TABLE
 NO. OF POCKETS
 RECEPTACLE
 CLASS OF PRODUCT

MATERIALS

Insulator Body : Thermal Plastic Rubber Santoprene 101-73
 Plug Contact : Brass Olin Alloy
 Contact Plating : 0.0001 to 0.0003 inches Tin Plating

SPECIFICATIONS

Voltage Rating : Limiting Operating Voltage At Sea Level, 250 Vots AC RMS
 Current Rating : 8 AMPS Continuous
 Temperature Range : Continuous Operation From -40°C To +125°C
 Wire Size : 14 , 16 & 18 AWG
 Overall Wire Insulation Diameter : 0.080 To 0.130 inches. (2.03 To 3.30 mm)
 Insulation Resistance : 5,000 Megohms Min.
 Dielectric Withstanding Voltage : 1000 VRMS

CUSTOMER INFORMATION DRAWING

PART NUMBER	NUMBER OF POCKETS (REF)	A DIA.	B DIA.	C DIA.	D DIA.	E DIA.	F DIA.	G DIA.	DASH NO.	G DIA.	FOR MOUNTING PANEL THICKNESS (REF)
44-104-10001-XX	1	.443/.437	.428/.422	.348/.342	.395/.389	.500/.494	-	-	-02	.197/.193	3/16
44-104-10002-XX	2	.473/.467	.438/.432	.394/.388	.446/.440	.610/.604	.067/.061	.530/.524			
44-104-10003-XX	3	.574/.568	.539/.533	.486/.480	.538/.532	.711/.705	.084/.078	.631/.625			
44-104-10004-XX	4	.685/.679	.650/.644	.584/.578	.636/.630	.822/.816	.103/.097	.742/.736			
44-104-10005-XX	5	.685/.679	.650/.644	.584/.578	.636/.630	.822/.816	.103/.097	.742/.736			
44-104-10006-XX	6	.799/.793	.764/.758	.688/.682	.750/.744	.936/.930	.101/.098	.856/.850			

ITEM NO	PART OR IDENTIFICATION NO	NOMENCLATURE OR DESCRIPTION	QTY REQ'D
PARTS LIST			
UNLESS OTHERWISE SPECIFIED TOLERANCES		APPROVAL	DATE
U.S. METRIC		DRAWN MAN WONG	11/28/93
X +/-		CHECKED Y. M. LEE	1/06/94
XX +/-		APPR.	
FRACTIONS +/-		APPR.	
ANGLES +/-		APPR.	
FOR MATERIALS AND FINISHES SEE NOTES		TITLE	
REMOVE SHARP EDGES		RECEPTACLE	
DIMENSIONS		CONNECTOR MINIATURE, 1 THRU 6 CONTACT	
U.S. INCHES		SIZE DRAWING NO.	
-(H/FEET)		B C44-104-100XX-XX B	
		SCALE NONE	
		SHEET 1 OF 1	