

4

3

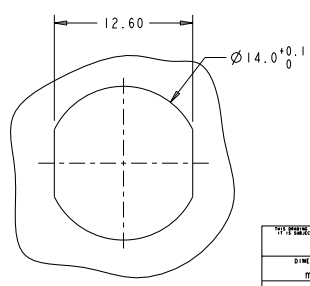
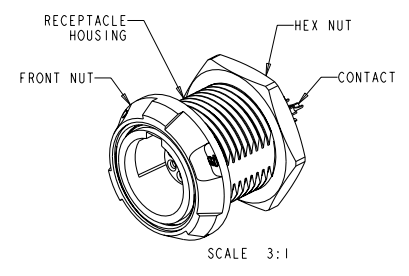
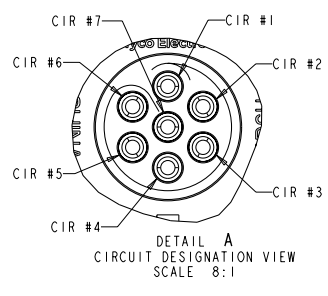
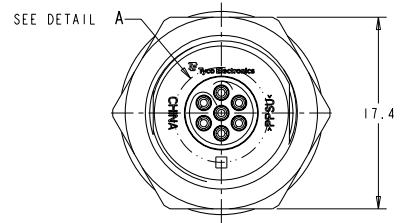
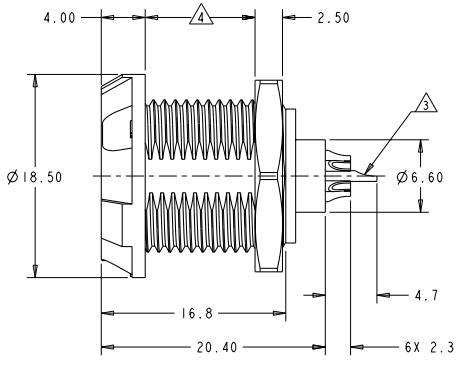
2

1

THIS DRAWING IS UNPUBLISHED. RELEASED FOR PUBLICATION BY TYCO ELECTRONICS CORPORATION. ALL RIGHTS RESERVED. COPYRIGHT 20

REV	LYR	DESCRIPTION	DATE	BY	APPD
A		ECO-07-010931	10MAY2007	RB	DR
B		ECO-07-029395	12DEC2007	RB	DR
B1		REVISED PER ECO-08-011256	10MAY2008	SS	DR
B2		REVISED PER ECO-09-008097	08APR2009	MF	DR

- △ MATERIAL:  
RECEPTACLE HOUSING, UL 94V-0 RATED THERMOPLASTIC, COLOR:SEE TABLE  
CONTACT, PHOSPHOR BRONZE  
FRONT NUT, UL 94V-0 RATED THERMOPLASTIC, COLOR:SEE TABLE  
HEX NUT, BRASS
- △ FINISH:  
CONTACT, 0.75µm MIN. GOLD OVER NICKEL  
HEX NUT, NICKEL
- △ SOLDER TERMINATION CONTACT, 26 AWG WIRE MAX.
- △ 10.0 MAXIMUM PANEL THICKNESS
- 5. INSTALLS FROM FRONT OR REAR OF PANEL
- 6. INGRESS PROTECTION: IP50 (MATED)
- △ PRELIMINARY PART NUMBER.



DIMENSIONS:		TOLERANCES UNLESS OTHERWISE SPECIFIED:		DATE: 27 JUN 2005		Tyco Electronics Harrisburg, PA 17105-3608	
mm		0 PLC ±0.2		DRAWN: R.L. KOLLER		NAME: RECEPTACLE ASSEMBLY	
		1 PLC ±0.2		CHKD: L. BREKOSKY		PANEL MOUNT	
		2 PLC ±0.08		DATE: 28 JUN 2005		7 POSITION	
		3 PLC ±0.1		PRODUCT SPEC: 108-2249		RESTRICTED TO:	
		4 PLC ±0.1		APPLICATION SPEC: 114-13184		-	
		ANGLES ±1°		WEIGHT: -		-	
MATERIAL: △ -		FINISH: △ -		CUSTOMER DRAWING		SCALE: 5:1	
				SHEET 1 OF 2		REV B2	

4

3

2

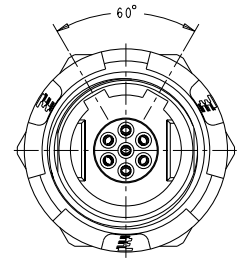
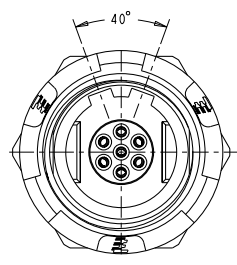
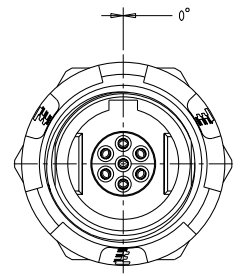
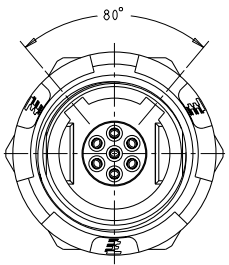
1

THIS DRAWING IS UNPUBLISHED. RELEASED FOR PUBLICATION BY TYCO ELECTRONICS CORPORATION. ALL RIGHTS RESERVED. COPYRIGHT 20

LOC	DISP	REV	DESCRIPTION	DATE	BY	APPV
AD	00					
		P	SEE SHEET 1			

KEYING	FRONT NUT COLOR	HOUSING COLOR	PART NUMBER
40°	BLUE	BLACK	4-1877068-2
	BLUE	GRAY	4-1877068-1
40°	GREEN	BLACK	4-1877068-0
	GREEN	GRAY	3-1877068-9
40°	YELLOW	BLACK	3-1877068-8
	YELLOW	GRAY	3-1877068-7
40°	WHITE	BLACK	3-1877068-6
	WHITE	GRAY	3-1877068-5
40°	RED	BLACK	3-1877068-4
	RED	GRAY	3-1877068-3
40°	BLACK	BLACK	3-1877068-2
	BLACK	GRAY	3-1877068-1
40°	GRAY	BLACK	3-1877068-0
	GRAY	GRAY	2-1877068-9
80°	BLACK	GRAY	2-1877068-8
	GRAY	BLACK	2-1877068-7
0°	BLACK	GRAY	2-1877068-6
	GRAY	BLACK	2-1877068-5
80°	BLUE	BLACK	2-1877068-4
	BLUE	GRAY	2-1877068-3
0°	BLUE	BLACK	2-1877068-2
	BLUE	GRAY	2-1877068-1
80°	GREEN	BLACK	2-1877068-0
	GREEN	GRAY	1-1877068-9
0°	GREEN	BLACK	1-1877068-8
	GREEN	GRAY	1-1877068-7
80°	YELLOW	BLACK	1-1877068-6
	YELLOW	GRAY	1-1877068-5
0°	YELLOW	BLACK	1-1877068-4
	YELLOW	GRAY	1-1877068-3
80°	WHITE	BLACK	1-1877068-2
	WHITE	GRAY	1-1877068-1
0°	WHITE	BLACK	1-1877068-0
	WHITE	GRAY	1877068-9
80°	RED	BLACK	1877068-8
	RED	GRAY	1877068-7
0°	RED	BLACK	1877068-6
	RED	GRAY	1877068-5
80°	BLACK	BLACK	1877068-4
	GRAY	GRAY	1877068-3
0°	BLACK	BLACK	1877068-2
	GRAY	GRAY	1877068-1

60°	BLUE	BLACK	5-1877068-6
	BLUE	GRAY	5-1877068-5
60°	GREEN	BLACK	5-1877068-4
	GREEN	GRAY	5-1877068-3
60°	YELLOW	BLACK	5-1877068-2
	YELLOW	GRAY	5-1877068-1
60°	WHITE	BLACK	5-1877068-0
	WHITE	GRAY	4-1877068-9
60°	RED	BLACK	4-1877068-8
	RED	GRAY	4-1877068-7
60°	BLACK	BLACK	4-1877068-6
	BLACK	GRAY	4-1877068-5
60°	GRAY	BLACK	4-1877068-4
	GRAY	GRAY	4-1877068-3



DIMENSIONS: mm 		TO BE USED IN CONJUNCTION WITH THE TYCO ELECTRONICS CORPORATION PANEL MOUNT RECEPTACLE ASSEMBLY. OPTIMIZED SPECIFICATIONS: 0 PLC 20° 1 PLC 20-2 2 PLC 20-20 3 PLC 20° 4 PLC 20° ANGLES 20° FINISH	DATE: 27 JUN 2005 BY: R. L. KOLLER CHK: B. BEKOSKY APPROV:	Tyco Electronics Harrisburg, PA 17105-3608
MATERIAL: -		PRODUCT SPEC: 108-2249 APPLICATION SPEC: 114-13184 WEIGHT: - CUSTOMER DRAWING	NAME: RECEPTACLE ASSEMBLY PANEL MOUNT 7 POSITION CASE CODE: A2 DRAWING NO: 00779 REV: B2	RESTRICTED TO: - SCALE: 5:1 SHEET: 2 OF 2

AMP 1471-B REV 3/04/2000