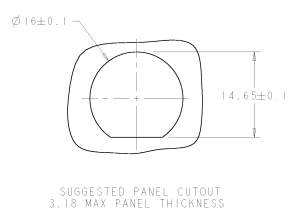
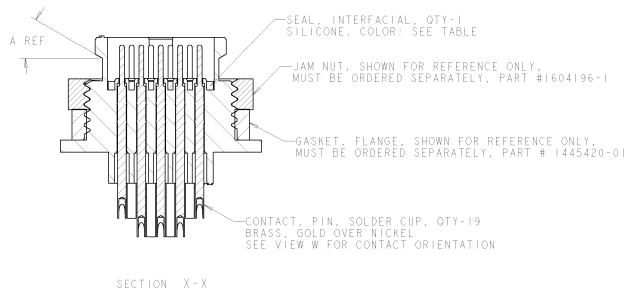
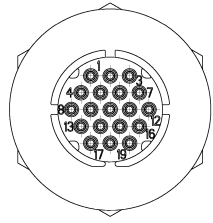
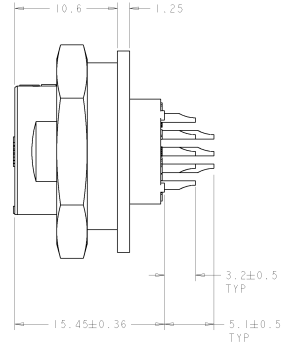
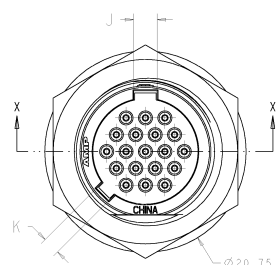
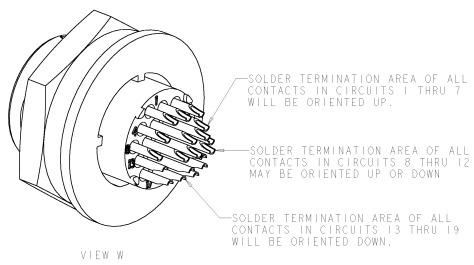
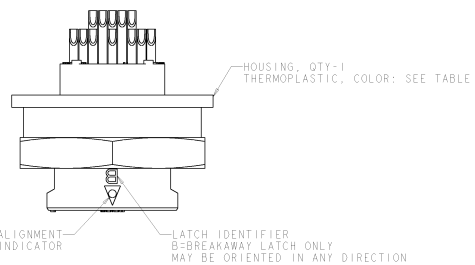


REV	DATE	DESCRIPTION	BY	CHKD	APP'D
FT	0				
F		REVISED EC 1058-1150-04	BOGGS	DM	HW
FT		REVISED EC-06-023018	BLANKENH	DM	BC



PART NUMBER: 1604196-1 QUANTITY: 1000 DATE: 02/02/04 BY: TERRY B. HARRIS		PART NAME: RECEPTACLE ASSY, 19 POSITION, FLANGE, SOLDER CUP, MICRO CPC PART # 1604196-1 REV: A CUSTOMER DRAWING:		TITAN ELECTRONICS HARRISBURG, PA 17033-8808 TERRY B. HARRIS TERRY B. HARRIS	
---	--	---	--	--	--

REV. NO.		REV. DATE		REV. DESCRIPTION	
0	0				
1	0				

△ PRELIMINARY PART NUMBER.

QTY	SELECT LOADED IN CIRCUITS	CODE	K	J	A	DESCRIPTION	HOUSING COLOR	PART NUMBER
11						4-7, 9, 10, 11, 13-16	A	1.8 2.4 0° POSITIVE BLACK 4-1445779-3
10						4-7, 9, 11, 13-16	A	1.8 2.4 0° POSITIVE BLACK 4-1445779-2
9						1, 3, 5, 6, 10, 14, 15, 17, 19	A	1.8 2.4 0° POSITIVE BLACK 4-1445779-1
8						1, 3, 5, 6, 14, 15, 17, 19	A	1.8 2.4 0° POSITIVE BLACK 4-1445779-0
11						4-7, 9, 10, 11, 13-16	A	1.8 2.4 30° BREAKAWAY WHITE 2-1445779-1
10						4-7, 9, 11, 13-16	A	1.8 2.4 30° BREAKAWAY WHITE 2-1445779-0
9						1, 3, 5, 6, 10, 14, 15, 17, 19	A	1.8 2.4 30° BREAKAWAY WHITE 1-1445779-9
8						1, 3, 5, 6, 14, 15, 17, 19	A	1.8 2.4 30° BREAKAWAY WHITE 1-1445779-8
19						ALL	B	2.4 1.8 0° POSITIVE BLACK 1-1445779-7
12						1-4, 7, 8, 12, 13, 16-19	A	1.8 2.4 30° BREAKAWAY WHITE 1-1445779-6
12						1-4, 7, 8, 12, 13, 16-19	A	1.8 2.4 0° POSITIVE BLACK 1-1445779-5
13						1-4, 7, 8, 10, 12, 13, 16-19	A	1.8 2.4 30° BREAKAWAY WHITE 1-1445779-4
13						1-4, 7, 8, 10, 12, 13, 16-19	A	1.8 2.4 0° POSITIVE BLACK 1-1445779-3
14						1-4, 7-9, 11-13, 16-19	A	1.8 2.4 30° BREAKAWAY WHITE 1-1445779-2
14						1-4, 7-9, 11-13, 16-19	A	1.8 2.4 0° POSITIVE BLACK 1-1445779-1
15						1-4, 7-13, 16-19	A	1.8 2.4 30° BREAKAWAY WHITE 1-1445779-0
15						1-4, 7-13, 16-19	A	1.8 2.4 0° POSITIVE BLACK 1445779-9
16						1-8, 12-19	A	1.8 2.4 30° BREAKAWAY WHITE 1445779-8
16						1-8, 12-19	A	1.8 2.4 0° POSITIVE BLACK 1445779-7
17						1-8, 10, 12-19	A	1.8 2.4 30° BREAKAWAY WHITE 1445779-6
17						1-8, 10, 12-19	A	1.8 2.4 0° POSITIVE BLACK 1445779-5
18						1-9, 11-19	A	1.8 2.4 30° BREAKAWAY WHITE 1445779-4
18						1-9, 11-19	A	1.8 2.4 0° POSITIVE BLACK 1445779-3
19						ALL	A	1.8 2.4 30° BREAKAWAY WHITE 1445779-2
19						ALL	A	1.8 2.4 0° POSITIVE BLACK 1445779-1

		DATE: 04/15/2011 TIME: 10:00:00 BY: J. J. J.		DATE: 04/15/2011 TIME: 10:00:00 BY: J. J. J.	
REVISION: 0 PART: 1445779-3		REVISION: 0 PART: 1445779-3		REVISION: 0 PART: 1445779-3	
MATERIAL: 1445779-3		MATERIAL: 1445779-3		MATERIAL: 1445779-3	
CUSTOMER DRAWING: 1445779-3		CUSTOMER DRAWING: 1445779-3		CUSTOMER DRAWING: 1445779-3	