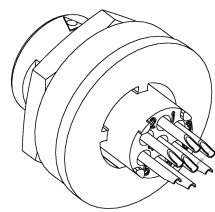
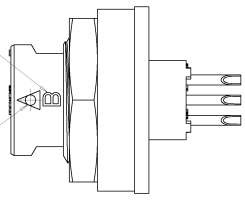


8	7	6	5	4	3	2	1
REVISED FOR PUBLICATION	REVISED FOR PUBLICATION						
001	002						

REV. NO.		DESCRIPTION	DATE	BY	CHKD	APP'D
1	0	RELEASED FOR PRODUCTION				
2	A	RELEASED FOR PRODUCTION				
3	B	REVISED FOR PRODUCTION				
4	C	REVISED FOR PRODUCTION				
5	D	REVISED FOR PRODUCTION				

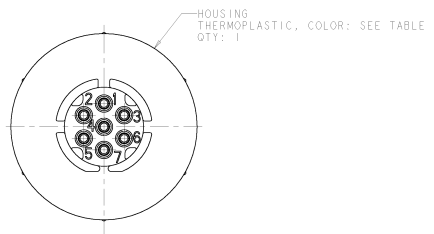
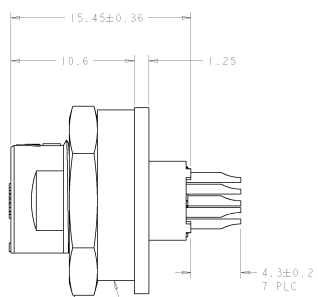
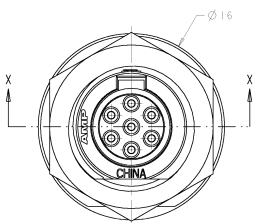
LATCH IDENTIFIER
B-BREAKAWAY LATCH
BREAKAWAY VERSION ONLY
MAY BE ORIENTED IN ANY DIRECTION

ALIGNMENT INDICATOR



SOLDER TERMINATION AREA OF CONTACT IN
CIRCUIT #4 MAY BE ORIENTED UP OR DOWN

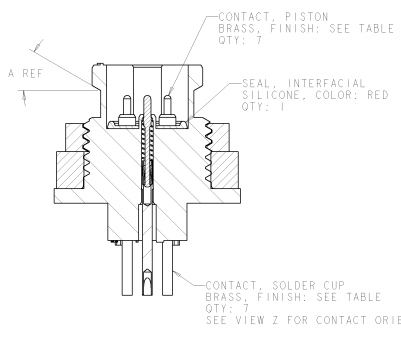
VIEW Z



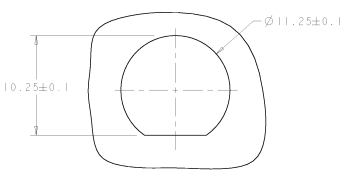
HOUSING
THERMOPLASTIC, COLOR: SEE TABLE
QTY: 1

JAM NUT, SHOWN FOR REFERENCE ONLY
TO BE ORDERED SEPARATELY, PART #1604197-1

GASKET, FLANGE, SHOWN FOR REFERENCE ONLY
TO BE ORDERED SEPARATELY, PART # 1445420-3



SECTION X-X



SUGGESTED PANEL CUTOUT
3.18 MAX PANEL THICKNESS
SCALE 5:1

REVISIONS 1 0 2 A 3 B 4 C 5 D		DESCRIPTION RELEASED FOR PRODUCTION REVISED FOR PRODUCTION REVISED FOR PRODUCTION REVISED FOR PRODUCTION		DATE BY CHKD APP'D	
MATERIAL SEE CALLOUT		FINISH SEE CALLOUT		CUSTOMER DRAWING 001778 (C)-1445718	

8	7	6	5	4	3	2	1
DATE MANUFACTURE	REVISIONS						
03-01-2004	BY TOSH ELECTRONICS CORPORATION, ALL RIGHTS RESERVED						

REV	DATE	DESCRIPTION	BY	CHK	APP
0		SEE SHEET 1			

QTY	CIRCUITS LOADED	PISTON FINISH	SOLDER CUP	A	COLOR	LATCH	PART NUMBER
7	ALL	.0020 GOLD OVER NICKEL	TIN OVER NICKEL	0°	BLACK	POSITIVE	3-1445718-2
2	1,7.	.00025 GOLD OVER NICKEL	TIN OVER NICKEL	30°	WHITE	BREAKAWAY	3-1445718-1
2	1,7.	.00025 GOLD OVER NICKEL	TIN OVER NICKEL	0°	BLACK	POSITIVE	3-1445718-0
3	2,3,7.	.00025 GOLD OVER NICKEL	TIN OVER NICKEL	30°	WHITE	BREAKAWAY	2-1445718-9
3	2,3,7.	.00025 GOLD OVER NICKEL	TIN OVER NICKEL	0°	BLACK	POSITIVE	2-1445718-8
4	2,3,5,6.	.00025 GOLD OVER NICKEL	TIN OVER NICKEL	30°	WHITE	BREAKAWAY	2-1445718-7
4	2,3,5,6.	.00025 GOLD OVER NICKEL	TIN OVER NICKEL	0°	BLACK	POSITIVE	2-1445718-6
5	2,3,4,5,6.	.00025 GOLD OVER NICKEL	TIN OVER NICKEL	30°	WHITE	BREAKAWAY	2-1445718-5
5	2,3,4,5,6.	.00025 GOLD OVER NICKEL	TIN OVER NICKEL	0°	BLACK	POSITIVE	2-1445718-4
6	1,2,3,5,6,7.	.00025 GOLD OVER NICKEL	TIN OVER NICKEL	30°	WHITE	BREAKAWAY	2-1445718-3
6	1,2,3,5,6,7.	.00025 GOLD OVER NICKEL	TIN OVER NICKEL	0°	BLACK	POSITIVE	2-1445718-2
7	ALL	.00025 GOLD OVER NICKEL	TIN OVER NICKEL	30°	WHITE	BREAKAWAY	2-1445718-1
7	ALL	.00025 GOLD OVER NICKEL	TIN OVER NICKEL	0°	BLACK	POSITIVE	2-1445718-0
2	1,7.	.00025 GOLD OVER NICKEL	TIN-LEAD OVER NICKEL	30°	WHITE	BREAKAWAY	1-1445718-2
2	1,7.	.00025 GOLD OVER NICKEL	TIN-LEAD OVER NICKEL	0°	BLACK	POSITIVE	1-1445718-1
3	2,3,7.	.00025 GOLD OVER NICKEL	TIN-LEAD OVER NICKEL	30°	WHITE	BREAKAWAY	1-1445718-0
3	2,3,7.	.00025 GOLD OVER NICKEL	TIN-LEAD OVER NICKEL	0°	BLACK	POSITIVE	1445718-9
4	2,3,5,6.	.00025 GOLD OVER NICKEL	TIN-LEAD OVER NICKEL	30°	WHITE	BREAKAWAY	1445718-8
4	2,3,5,6.	.00025 GOLD OVER NICKEL	TIN-LEAD OVER NICKEL	0°	BLACK	POSITIVE	1445718-7
5	2,3,4,5,6.	.00025 GOLD OVER NICKEL	TIN-LEAD OVER NICKEL	30°	WHITE	BREAKAWAY	1445718-6
5	2,3,4,5,6.	.00025 GOLD OVER NICKEL	TIN-LEAD OVER NICKEL	0°	BLACK	POSITIVE	1445718-5
6	1,2,3,5,6,7.	.00025 GOLD OVER NICKEL	TIN-LEAD OVER NICKEL	30°	WHITE	BREAKAWAY	1445718-4
6	1,2,3,5,6,7.	.00025 GOLD OVER NICKEL	TIN-LEAD OVER NICKEL	0°	BLACK	POSITIVE	1445718-3
7	ALL	.00025 GOLD OVER NICKEL	TIN-LEAD OVER NICKEL	30°	WHITE	BREAKAWAY	1445718-2
7	ALL	.00025 GOLD OVER NICKEL	TIN-LEAD OVER NICKEL	0°	BLACK	POSITIVE	1445718-1

DATE: 03-01-2004 TIME: 10:00 AM DRAWN BY: J. J. J.	DATE: 03-01-2004 TIME: 10:00 AM CHECKED BY: J. J. J.	DATE: 03-01-2004 TIME: 10:00 AM DRAWN BY: J. J. J.	DATE: 03-01-2004 TIME: 10:00 AM CHECKED BY: J. J. J.
MATERIAL: SEE CALLOUT FINISH: SEE CALLOUT		RECEPTACLE ASSEMBLY, 7 POSITION, PANEL MOUNT, SPRING PROBE, SOLDER TAIL, MICRO CPC.	
PART NUMBER: 1445718-1		CUSTOMER DRAWING: 1445718-1	