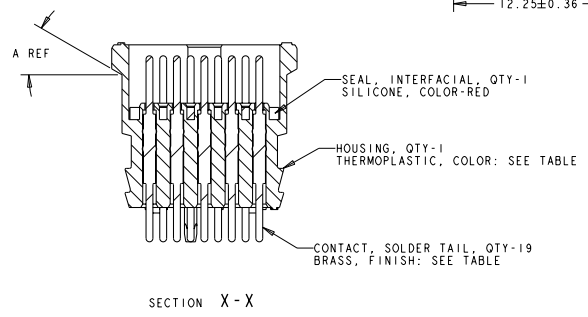
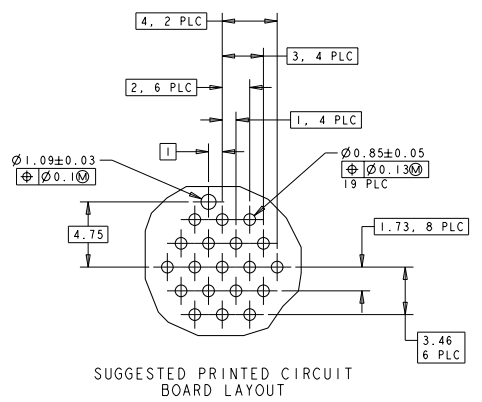
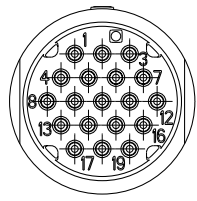
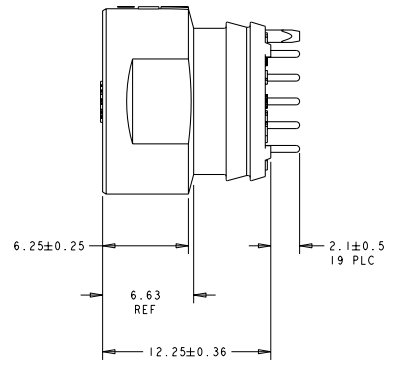
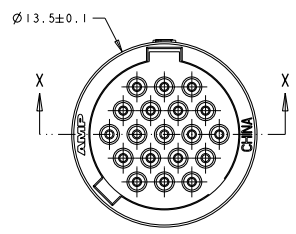
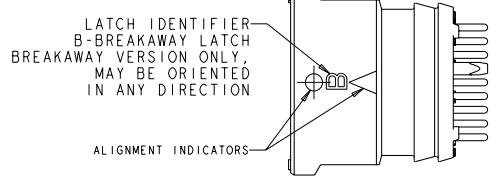


THIS DRAWING IS UNPUBLISHED. RELEASED FOR PUBLICATION
 BY TYCO ELECTRONICS CORPORATION. ALL RIGHTS RESERVED.

| REV | DATE | BY | APPROV |
|-----|-----------|----|--------|
| A | 28JUL2004 | SW | HW |
| A1 | 06JUN2006 | SW | DC |
| A2 | 02JAN2007 | SW | DC |



| | | | |
|-----------------------|--|---|---|
| DIMENSIONS: mm | OPERATING SPECIFICATIONS: 0 PLC ± 1 PLC ± 2 PLC ±0.13 3 PLC ± 4 PLC ± ANGLES ± FINISH | DWN 23AUG2001 SHANE WILST CDR 23AUG2001 G. DOUITY APPR 28JUL2004 H. WAKLEM PRODUCT SPEC APPLICATION SPEC WEIGHT MATERIAL SEE CALLOUT FINISH SEE CALLOUT | Tyco Electronics Harrisburg, PA 17105-3608 NAME ASSEMBLY, RECEPTACLE, VERTICLE, FREE HANGING, SCREW MACHINE, SOLDER TAIL, 19 POSITION, MICRO CPC SHEET CASE CODE DRAWING NO A2 00779 © 1445772 SCALE 5:1 SHEET 1 OF 2 REV A2 |
|-----------------------|--|---|---|

AMP 1471-B REV 31MAR2000
 Pre-ENGINEER DRAWING

4

3


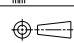
2

1

THIS DRAWING IS UNPUBLISHED. RELEASED FOR PUBLICATION
 BY TYCO ELECTRONICS CORPORATION. ALL RIGHTS RESERVED.

| REV | DATE | BY | APPROV | DESCRIPTION |
|-----|------|----|--------|-------------|
| 1 | - | - | - | SEE SHEET 1 |
| | | | | |
| | | | | |

| | | | | | | |
|----------|------------------------|------------------|---------|-------|-----------|-------------|
| 11 | 4-7,9,10,11,13-16 | GOLD OVER NICKEL | 30° | WHITE | BREAKAWAY | 2-1445772-4 |
| 11 | 4-7,9,10,11,13-16 | GOLD OVER NICKEL | 0° | BLACK | POSITIVE | 2-1445772-3 |
| 10 | 4-7,9,11,13-16 | GOLD OVER NICKEL | 30° | WHITE | BREAKAWAY | 2-1445772-2 |
| 10 | 4-7,9,11,13-16 | GOLD OVER NICKEL | 0° | BLACK | POSITIVE | 2-1445772-1 |
| 9 | 1,3,5,6,10,14,15,17,19 | GOLD OVER NICKEL | 30° | WHITE | BREAKAWAY | 2-1445772-0 |
| 9 | 1,3,5,6,10,14,15,17,19 | GOLD OVER NICKEL | 0° | BLACK | POSITIVE | 1-1445772-9 |
| 8 | 1,3,5,6,14,15,17,19 | GOLD OVER NICKEL | 30° | WHITE | BREAKAWAY | 1-1445772-8 |
| 8 | 1,3,5,6,14,15,17,19 | GOLD OVER NICKEL | 0° | BLACK | POSITIVE | 1-1445772-7 |
| 12 | 1-4,7,8,12,13,16-19 | GOLD OVER NICKEL | 30° | WHITE | BREAKAWAY | 1-1445772-6 |
| 12 | 1-4,7,8,12,13,16-19 | GOLD OVER NICKEL | 0° | BLACK | POSITIVE | 1-1445772-5 |
| 13 | 1-4,7,8,10,12,13,16-19 | GOLD OVER NICKEL | 30° | WHITE | BREAKAWAY | 1-1445772-4 |
| 13 | 1-4,7,8,10,12,13,16-19 | GOLD OVER NICKEL | 0° | BLACK | POSITIVE | 1-1445772-3 |
| 14 | 1-4,7-9,11-13,16-19 | GOLD OVER NICKEL | 30° | WHITE | BREAKAWAY | 1-1445772-2 |
| 14 | 1-4,7-9,11-13,16-19 | GOLD OVER NICKEL | 0° | BLACK | POSITIVE | 1-1445772-1 |
| 15 | 1-4,7-13,16-19 | GOLD OVER NICKEL | 30° | WHITE | BREAKAWAY | 1-1445772-0 |
| 15 | 1-4,7-13,16-19 | GOLD OVER NICKEL | 0° | BLACK | POSITIVE | 1445772-9 |
| 16 | 1-8,12-19 | GOLD OVER NICKEL | 30° | WHITE | BREAKAWAY | 1445772-8 |
| 16 | 1-8,12-19 | GOLD OVER NICKEL | 0° | BLACK | POSITIVE | 1445772-7 |
| 17 | 1-8,10,12,13-19 | GOLD OVER NICKEL | 30° | WHITE | BREAKAWAY | 1445772-6 |
| 17 | 1-8,10,12,13-19 | GOLD OVER NICKEL | 0° | BLACK | POSITIVE | 1445772-5 |
| 18 | 1-9,11-19 | GOLD OVER NICKEL | 30° | WHITE | BREAKAWAY | 1445772-4 |
| 18 | 1-9,11-19 | GOLD OVER NICKEL | 0° | BLACK | POSITIVE | 1445772-3 |
| 19 | ALL | GOLD OVER NICKEL | 30° | WHITE | BREAKAWAY | 1445772-2 |
| 19 | ALL | GOLD OVER NICKEL | 0° | BLACK | POSITIVE | 1445772-1 |
| QTY | CIRCUITS LOADED | FINISH | A | COLOR | LATCH | PART NUMBER |
| CONTACTS | | | HOUSING | | | PART NUMBER |

| | | | | | | |
|--|--|---|--|-----------------|------------------|--|
| DIMENSIONS: mm | | TOLERANCES UNLESS OTHERWISE SPECIFIED | | DATE: 23AUG2001 | BY: SHANE WILSON |  Tyco Electronics Harrisburg, PA 17105-3608 |
|  | | 0 PLC ±.010 1 PLC ±.010 2 PLC ±.010 3 PLC ±.010 4 PLC ±.010 ANGLES ±.010 FINISH - | | DATE: 28JUL2004 | BY: G. DOULTY | |
| MATERIAL: - | | WEIGHT: - | | SCALE: 5:1 | SHEET: 2 OF 2 | NAME: ASSEMBLY, RECEPTACLE, VERTICLE, FREE HANGING, SCREW MACHINE, SOLDER TAIL, 19 POSITION, MICRO CPC CASE CODE: A2 DRAWING NO: 1445772 RESTRICTED TO: - |